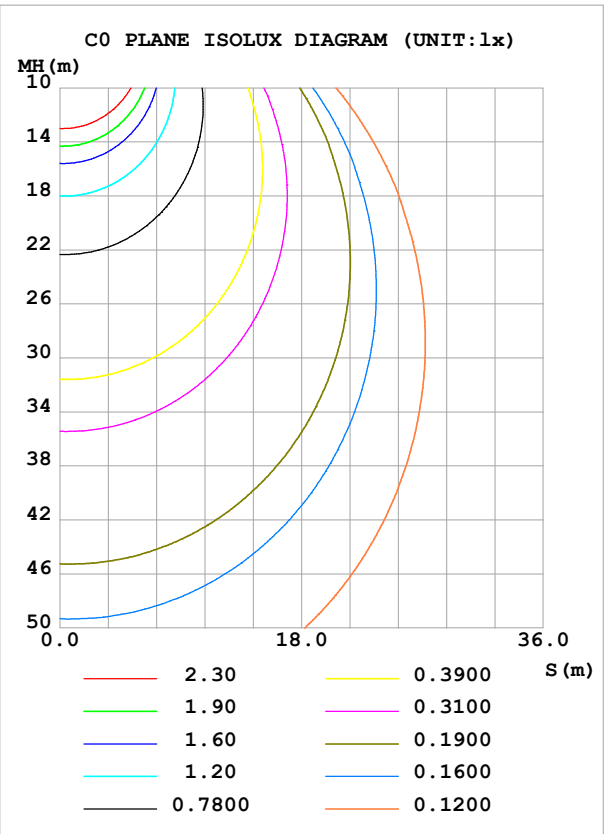
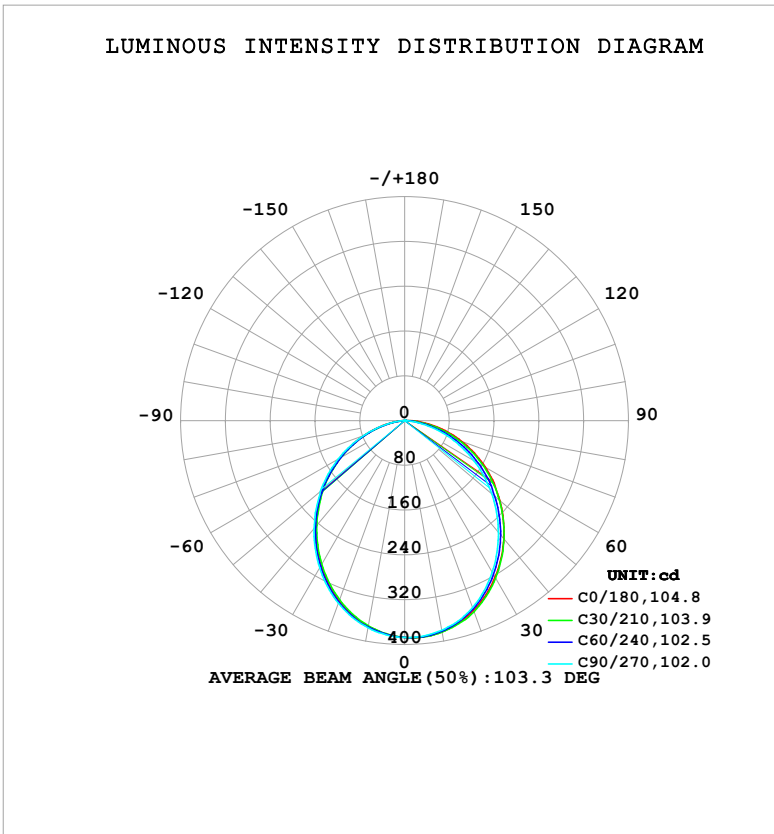


LUMINAIRE PHOTOMETRIC TEST REPORT

Test:U:220.34V I:0.1577A P:12.737W PF:0.3668 Freq:49.99Hz		
UTHDi:0.00% ITHDi:0.00% KDisp:0 Lamp Flux:996.589x1 lm		
NAME: 6645	TYPE:	WEIGHT: 0
SPEC.: 12W	DIM.: 0	SERIAL No.: 1
MFR.: NORDECOR	SUR.:	Shielding Angle: 0

DATA OF LAMP		PHOTOMETRIC DATA			
MODEL		Imax (cd)	388.3	S/MH (C0/180)	1.16
NOMINAL POWER (W)	12.7371	LOR (%)	100.0	S/MH (C90/270)	1.17
RATED VOLTAGE (V)	220	TOTAL FLUX (lm)	996.60	η UP, DN (C0-180)	0.1,51.2
NOMINAL FLUX (lm)	996.589	CIE CLASS	DIRECT	η UP, DN (C180-360)	0.1,48.6
LAMPS INSIDE	1	η up (%)	0.2	CIBSE SHR NOM	1.25
TEST VOLTAGE (V)	220	η down (%)	99.8	CIBSE SHR MAX	1.35



C Range: 0 - 360DEG
 C Interval: 30.0DEG
 Test Speed: HIGH
 Temperature: 25.3°C
 Operators: YAO
 Test Date: 2025-05-14

γ Range: 0 - 100DEG
 γ Interval: 1.0DEG
 Test System: EVERFINE GO-3000H_V1 SYSTEM V2.00.485
 Humidity: 65.0%
 Test Distance: 9.830m [K=1.0000]
 Remarks:

ZONAL FLUX DIAGRAM

ZONAL FLUX DIAGRAM:

γ	C0	C45	C90	C135	C180	C225	C270	C315	γ	Φ zone	Φ total	%lum,lamp
10	383.0	383.0	380.1	376.1	373.2	373.2	375.8	380.3	0- 10	36.53	36.53	3.67,3.67
20	360.4	360.5	355.2	347.1	342.9	342.4	346.8	355.9	10- 20	103.4	139.9	14,14
30	323.2	321.3	312.9	303.9	299.1	298.3	303.7	316.2	20- 30	152.9	292.8	29.4,29.4
40	275.9	271.5	260.7	251.8	247.5	246.1	251.9	266.7	30- 40	178.4	471.2	47.3,47.3
50	222.1	215.8	203.1	195.6	191.6	190.1	196.3	211.2	40- 50	178.5	649.7	65.2,65.2
60	166.6	157.6	143.0	136.5	133.6	131.3	136.9	153.6	50- 60	155.8	805.5	80.8,80.8
70	108.7	97.83	82.90	77.96	76.41	73.24	77.64	94.63	60- 70	114.1	919.6	92.3,92.3
80	53.36	40.44	28.10	25.50	26.44	22.38	24.44	38.89	70- 80	61.60	981.2	98.5,98.5
90	5.017	1.752	1.150	1.149	0.8020	0.9430	0.7381	0.9065	80- 90	13.76	995.0	99.8,99.8
100	1.306	1.519	2.050	1.577	1.281	1.223	1.913	1.252	90-100	1.530	996.5	100,100
110	0	0	0	0	0	0	0	0	100-110	0.0795	996.6	100,100
120	0	0	0	0	0	0	0	0	110-120	0	996.6	100,100
130	0	0	0	0	0	0	0	0	120-130	0	996.6	100,100
140	0	0	0	0	0	0	0	0	130-140	0	996.6	100,100
150	0	0	0	0	0	0	0	0	140-150	0	996.6	100,100
160	0	0	0	0	0	0	0	0	150-160	0	996.6	100,100
170	0	0	0	0	0	0	0	0	160-170	0	996.6	100,100
180	0	0	0	0	0	0	0	0	170-180	0	996.6	100,100
DEG	LUMINOUS INTENSITY:cd									UNIT:lm		

Conical surface Flux(90deg): 561.99 lm

%lum = 56.4%

%lamp = 56.4%

Conical surface Flux(130deg): 868.7 lm

%lum = 87.2%

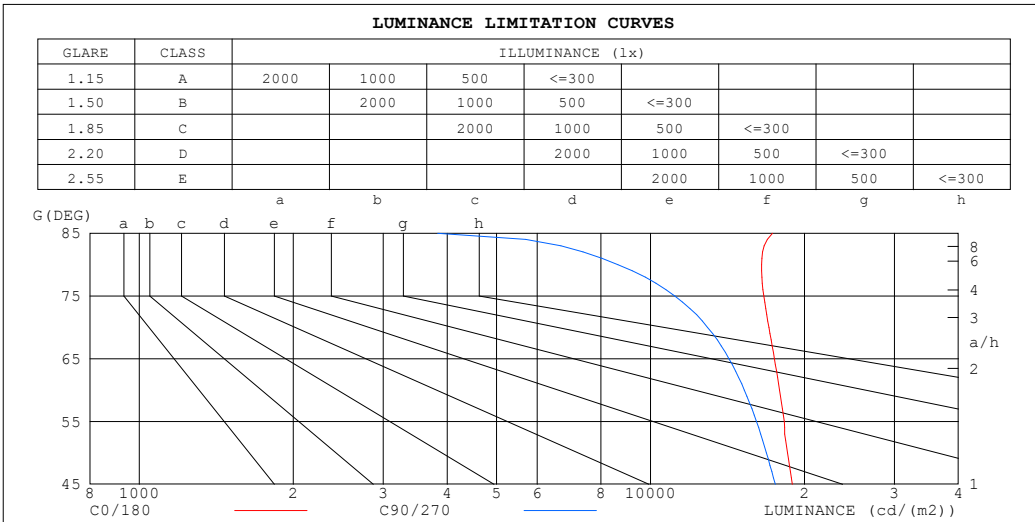
%lamp = 87.2%

C Range: 0 - 360DEG
 C Interval: 30.0DEG
 Test Speed: HIGH
 Temperature:25.3°C
 Operators:YAO
 Test Date:2025-05-14

γ Range: 0 - 100DEG
 γ Interval: 1.0DEG
 Test System:EVERFINE GO-3000H_V1 SYSTEM V2.00.485
 Humidity:65.0%
 Test Distance:9.830m [K=1.0000]
 Remarks:

LUMINANCE LIMITATION CURVES

Test:U:220.34V I:0.1577A P:12.737W PF:0.3668 Freq:49.99Hz UTHDi:0.00% ITHDi:0.00% KDisp:0 Lamp Flux:996.589x1 lm		
NAME: 6645	TYPE:	WEIGHT: 0
SPEC.: 12W	DIM.: 0	SERIAL No.: 1
MFR.: NORDECOR	SUR.:	Shielding Angle: 0



LUMINANCE cd/(m2)		
G (DEG)	C0/180	C90/270
85	17310	3831
80	16482	8630
75	16663	11155
70	17041	12929
65	17472	14241
60	17872	15260
55	18273	16120
50	18533	16850
45	18927	17534

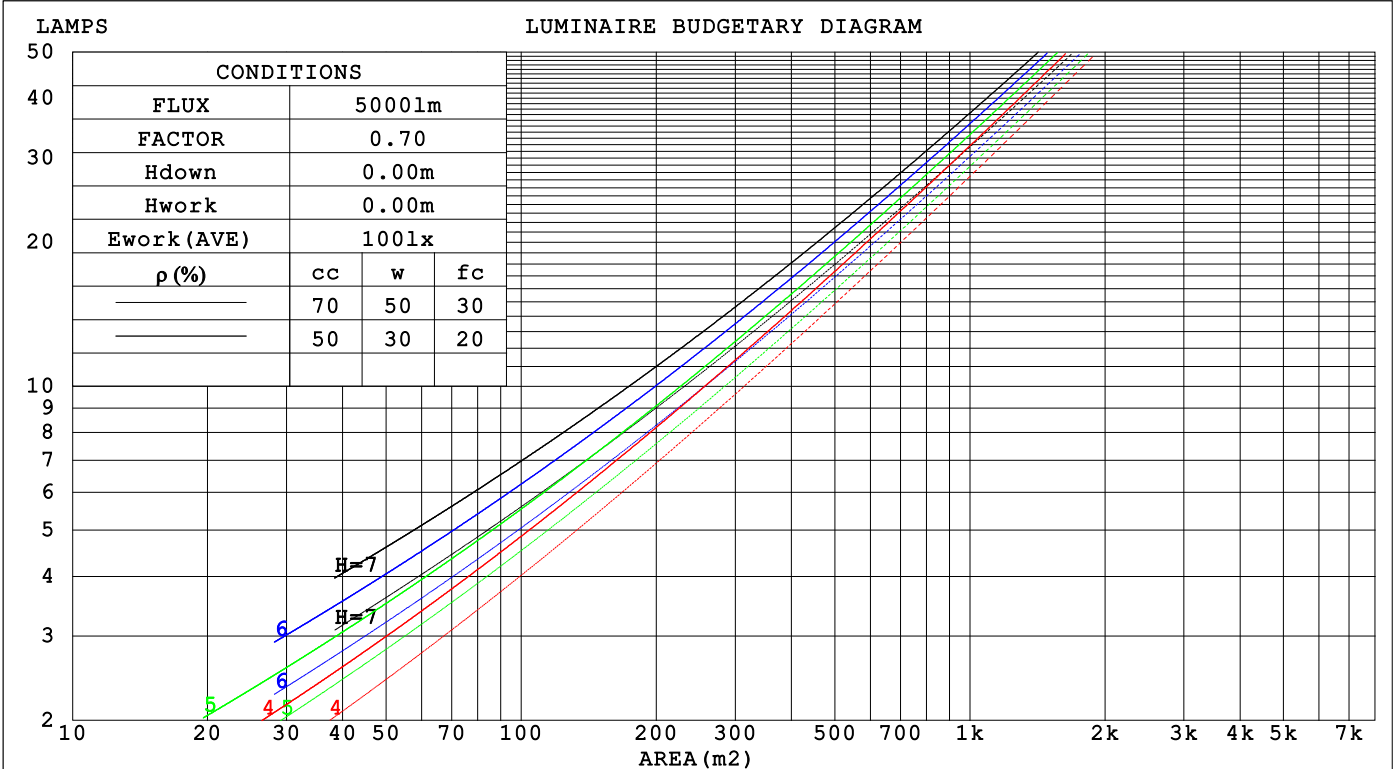
C Range: 0 - 360DEG
 C Interval: 30.0DEG
 Test Speed: HIGH
 Temperature: 25.3°C
 Operators: YAO
 Test Date: 2025-05-14

γ Range: 0 - 100DEG
 γ Interval: 1.0DEG
 Test System: EVERFINE GO-3000H_V1 SYSTEM V2.00.485
 Humidity: 65.0%
 Test Distance: 9.830m [K=1.0000]
 Remarks:

CU AND LUMINAIRE BUDGETARY ESTIMATE DIAGRAM

Test:U:220.34V I:0.1577A P:12.737W PF:0.3668 Freq:49.99Hz		
UTHdi:0.00% ITHdi:0.00% KDisp:0 Lamp Flux:996.589x1 lm		
NAME: 6645	TYPE:	WEIGHT: 0
SPEC.: 12W	DIM.: 0	SERIAL No.: 1
MFR.: NORDECOR	SUR.:	Shielding Angle: 0

pcc	80%			70%			50%			30%			10%			0
pw	50%	30%	10%	50%	30%	10%	50%	30%	10%	50%	30%	10%	50%	30%	10%	0
pfc	20%			20%			20%			20%			20%			0
RCR	RCR:Room Cavity Ratio						Coefficients of Utilization(CU)									
0.0	1.19	1.19	1.19	1.16	1.16	1.16	1.11	1.11	1.11	1.06	1.06	1.06	1.02	1.02	1.02	.00
1.0	1.05	1.00	.97	1.02	.99	.95	.98	.95	.92	.94	.92	.89	.90	.88	.87	.84
2.0	.91	.85	.79	.90	.83	.78	.86	.81	.76	.83	.78	.75	.80	.76	.73	.71
3.0	.81	.73	.66	.79	.72	.66	.76	.70	.64	.73	.68	.63	.71	.66	.62	.60
4.0	.72	.63	.56	.70	.62	.56	.68	.61	.55	.65	.59	.54	.63	.58	.54	.52
5.0	.64	.55	.49	.63	.55	.48	.61	.54	.48	.59	.52	.47	.57	.51	.47	.45
6.0	.58	.49	.43	.57	.49	.43	.55	.48	.42	.53	.47	.42	.52	.46	.41	.39
7.0	.53	.44	.38	.52	.44	.38	.50	.43	.37	.49	.42	.37	.47	.41	.37	.35
8.0	.48	.40	.34	.47	.39	.34	.46	.39	.34	.45	.38	.33	.44	.38	.33	.31
9.0	.44	.36	.31	.44	.36	.30	.42	.35	.30	.41	.35	.30	.40	.34	.30	.28
10.0	.41	.33	.28	.40	.33	.28	.39	.32	.28	.38	.32	.27	.37	.32	.27	.26



C Range: 0 - 360DEG
 C Interval: 30.0DEG
 Test Speed: HIGH
 Temperature:25.3°C
 Operators:YAO
 Test Date:2025-05-14

γ Range: 0 - 100DEG
 γ Interval: 1.0DEG
 Test System:EVERFINE GO-3000H_V1 SYSTEM V2.00.485
 Humidity:65.0%
 Test Distance:9.830m [K=1.0000]
 Remarks:

WEC AND CCEC

Test:U:220.34V I:0.1577A P:12.737W PF:0.3668 Freq:49.99Hz		
UTHDi:0.00% ITHDi:0.00% KDisp:0 Lamp Flux:996.589x1 lm		
NAME: 6645	TYPE:	WEIGHT: 0
SPEC.: 12W	DIM.: 0	SERIAL No.: 1
MFR.: NORDECOR	SUR.:	Shielding Angle: 0

ρ_{CC}	80%			70%			50%			30%			10%			0
ρ_w	50%	30%	10%	50%	30%	10%	50%	30%	10%	50%	30%	10%	50%	30%	10%	0
ρ_{fc}	20%			20%			20%			20%			20%			0
RCR	RCR:Room Cavity Ratio						Wall Exitance Coefficients(WEC)									
0.0																
1.0	.296	.169	.053	.289	.165	.052	.276	.158	.051	.264	.152	.049	.253	.146	.047	
2.0	.281	.154	.047	.275	.152	.047	.264	.147	.046	.253	.142	.044	.243	.137	.043	
3.0	.262	.139	.042	.256	.137	.041	.246	.133	.041	.236	.130	.040	.228	.126	.039	
4.0	.243	.126	.037	.238	.124	.037	.229	.121	.036	.220	.118	.036	.212	.115	.035	
5.0	.225	.115	.033	.221	.113	.033	.212	.111	.033	.205	.108	.032	.198	.106	.032	
6.0	.209	.105	.030	.205	.104	.030	.198	.101	.030	.191	.099	.029	.185	.097	.029	
7.0	.195	.096	.027	.192	.095	.027	.185	.094	.027	.179	.092	.027	.173	.090	.026	
8.0	.182	.089	.025	.179	.088	.025	.174	.087	.025	.168	.085	.025	.163	.084	.024	
9.0	.171	.083	.023	.168	.082	.023	.163	.081	.023	.158	.079	.023	.154	.078	.023	
10.0	.161	.077	.021	.159	.077	.021	.154	.075	.021	.150	.074	.021	.145	.073	.021	

ρ_{CC}	80%			70%			50%			30%			10%			0
ρ_w	50%	30%	10%	50%	30%	10%	50%	30%	10%	50%	30%	10%	50%	30%	10%	0
ρ_{fc}	20%			20%			20%			20%			20%			0
RCR	RCR:Room Cavity Ratio						Ceiling Cavity Exitance Coefficients(CCEC)									
0.0	.192	.192	.192	.164	.164	.164	.112	.112	.112	.064	.064	.064	.021	.021	.021	
1.0	.181	.157	.137	.155	.135	.118	.106	.093	.081	.061	.054	.047	.019	.017	.015	
2.0	.172	.133	.101	.147	.115	.087	.101	.079	.061	.058	.046	.036	.019	.015	.012	
3.0	.164	.115	.077	.141	.100	.067	.097	.069	.047	.056	.040	.027	.018	.013	.009	
4.0	.156	.102	.061	.134	.088	.053	.092	.061	.037	.053	.036	.022	.017	.012	.007	
5.0	.149	.092	.049	.128	.079	.043	.088	.055	.030	.051	.033	.018	.016	.011	.006	
6.0	.142	.083	.041	.122	.072	.036	.084	.050	.025	.049	.030	.015	.016	.010	.005	
7.0	.135	.076	.035	.116	.066	.031	.080	.046	.022	.047	.027	.013	.015	.009	.004	
8.0	.129	.070	.030	.111	.061	.026	.077	.043	.019	.045	.025	.011	.014	.008	.004	
9.0	.123	.066	.027	.106	.057	.023	.073	.040	.017	.043	.024	.010	.014	.008	.003	
10.0	.117	.061	.024	.101	.053	.021	.070	.037	.015	.041	.022	.009	.013	.007	.003	

C Range: 0 - 360DEG
 C Interval: 30.0DEG
 Test Speed: HIGH
 Temperature:25.3°C
 Operators:YAO
 Test Date:2025-05-14

γ Range: 0 - 100DEG
 γ Interval: 1.0DEG
 Test System:EVERFINE GO-3000H_V1 SYSTEM V2.00.485
 Humidity:65.0%
 Test Distance:9.830m [K=1.0000]
 Remarks:

UGR(Unified Glare Rating) Table

Test:U:220.34V I:0.1577A P:12.737W PF:0.3668 Freq:49.99Hz										
UTHDi:0.00% ITHDi:0.00% KDisp:0 Lamp Flux:996.589x1 lm										
NAME: 6645					TYPE:			WEIGHT: 0		
SPEC.: 12W					DIM.: 0			SERIAL No.: 1		
MFR.: NORDECOR					SUR.:			Shielding Angle: 0		
ceiling/cavity	0.7	0.7	0.5	0.5	0.3	0.7	0.7	0.5	0.5	0.3
walls	0.5	0.3	0.5	0.3	0.3	0.5	0.3	0.5	0.3	0.3
working plane	0.2	0.2	0.2	0.2	0.2	0.2	0.2	0.2	0.2	0.2
Room dimensions	Viewed crosswise					Viewed endwise				
x = 2H y = 2H	23.2	24.7	23.5	24.9	25.1	22.6	24.1	22.9	24.3	24.5
3H	24.8	26.2	25.1	26.4	26.7	23.9	25.3	24.2	25.5	25.8
4H	25.5	26.8	25.8	27.1	27.3	24.4	25.7	24.7	25.9	26.2
6H	26.1	27.3	26.4	27.6	27.9	24.7	25.9	25.0	26.2	26.4
8H	26.3	27.5	26.7	27.8	28.1	24.7	25.9	25.0	26.2	26.5
12H	26.5	27.6	26.8	27.9	28.2	24.7	25.8	25.1	26.1	26.4
4H 2H	23.8	25.1	24.1	25.3	25.6	23.3	24.6	23.6	24.8	25.1
3H	25.6	26.7	25.9	27.0	27.3	24.8	25.9	25.1	26.2	26.5
4H	26.4	27.4	26.8	27.8	28.1	25.4	26.4	25.8	26.7	27.1
6H	27.1	28.0	27.5	28.4	28.7	25.8	26.7	26.2	27.0	27.4
8H	27.4	28.2	27.8	28.6	29.0	25.8	26.7	26.3	27.1	27.4
12H	27.6	28.4	28.1	28.8	29.2	25.9	26.6	26.3	27.0	27.4
8H 4H	26.6	27.5	27.0	27.8	28.2	25.7	26.6	26.1	26.9	27.3
6H	27.5	28.2	27.9	28.6	29.0	26.2	26.9	26.7	27.3	27.8
8H	27.9	28.5	28.3	28.9	29.4	26.4	27.0	26.8	27.4	27.9
12H	28.2	28.7	28.7	29.2	29.6	26.4	27.0	26.9	27.4	27.9
12H 4H	26.6	27.4	27.0	27.8	28.2	25.7	26.5	26.2	26.9	27.3
6H	27.5	28.1	28.0	28.6	29.0	26.3	26.9	26.8	27.4	27.8
8H	27.9	28.5	28.4	28.9	29.4	26.5	27.0	27.0	27.5	27.9
Variations with the observer position at spacings(CIE Pub.117):										
S = 1.0H	+ 0.1 / - 0.2					+ 0.2 / - 0.2				
1.5H	+ 0.2 / - 0.3					+ 0.2 / - 0.4				
2.0H	+ 0.2 / - 0.2					+ 0.2 / - 0.4				

CIE Pub.117, 996.6 lm Total Lamp Luminous Flux Corrected (8log(F/F0) = -0.0)
 Area: 0.018725 m2

C Range: 0 - 360DEG
 C Interval: 30.0DEG
 Test Speed: HIGH
 Temperature:25.3°C
 Operators:YAO
 Test Date:2025-05-14

γ Range: 0 - 100DEG
 γ Interval: 1.0DEG
 Test System:EVERFINE GO-3000H_V1 SYSTEM V2.00.485
 Humidity:65.0%
 Test Distance:9.830m [K=1.0000]
 Remarks:

UTILIZATION FACTORS TABLE

Test:U:220.34V I:0.1577A P:12.737W PF:0.3668 Freq:49.99Hz UTHDi:0.00% ITHDi:0.00% KDisp:0 Lamp Flux:996.589x1 lm		
NAME: 6645	TYPE:	WEIGHT: 0
SPEC.: 12W	DIM.: 0	SERIAL No.: 1
MFR.: NORDECOR	SUR.:	Shielding Angle: 0

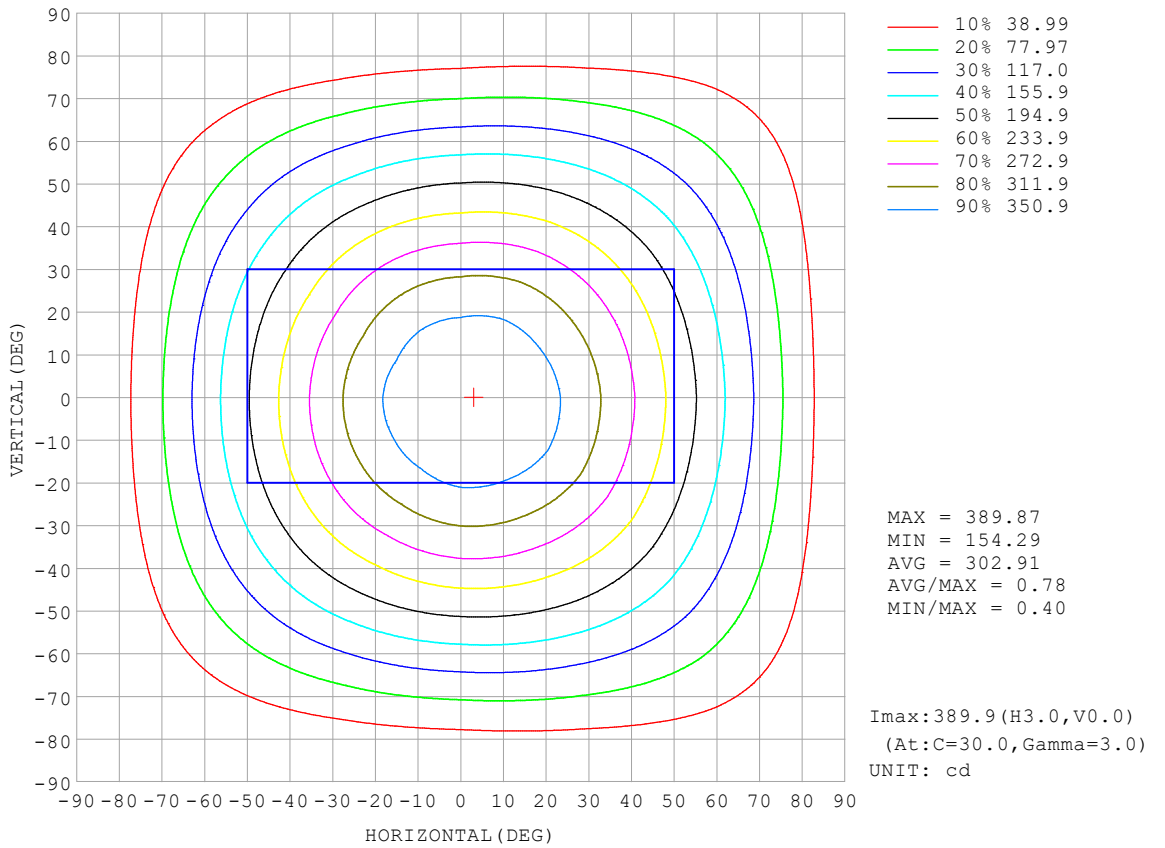
REFLECTANCE										
Ceiling	0.8	0.8	0.8	0.7	0.7	0.7	0.5	0.5	0.5	0
Walls	0.7	0.5	0.3	0.7	0.5	0.3	0.7	0.5	0.3	0
Working plane	0.2	0.2	0.2	0.2	0.2	0.2	0.2	0.2	0.2	0
ROOM INDEX	UTILIZATION FACTORS (PERCENT) k(RI) x RCR = 5									
k = 0.60	59	48	41	58	47	41	57	47	41	34
0.80	69	58	51	68	57	50	66	57	50	43
1.00	77	67	60	76	66	59	74	67	59	52
1.25	84	74	67	83	74	67	80	72	66	59
1.50	89	80	73	88	79	72	85	77	71	64
2.00	96	88	82	94	87	81	91	84	79	72
2.50	100	92	86	98	91	86	94	88	84	76
3.00	103	96	91	101	95	90	97	92	88	79
4.00	107	101	97	104	100	96	100	96	93	84
5.00	109	105	101	107	103	99	102	99	96	87
ROOM INDEX	UF(total)									Direct
According to DIN EN 13032-2 2004			Suspended				SHRNOM = 1.25			

C Range: 0 - 360DEG
 C Interval: 30.0DEG
 Test Speed: HIGH
 Temperature:25.3°C
 Operators:YAO
 Test Date:2025-05-14

γ Range: 0 - 100DEG
 γ Interval: 1.0DEG
 Test System:EVERFINE GO-3000H_V1 SYSTEM V2.00.485
 Humidity:65.0%
 Test Distance:9.830m [K=1.0000]
 Remarks:

ISOCANDELA DIAGRAM

Test:U:220.34V I:0.1577A P:12.737W PF:0.3668 Freq:49.99Hz UTHDi:0.00% ITHDi:0.00% KDisp:0 Lamp Flux:996.589x1 lm		
NAME: 6645	TYPE:	WEIGHT: 0
SPEC.: 12W	DIM.: 0	SERIAL No.: 1
MFR.: NORDECOR	SUR.:	Shielding Angle: 0

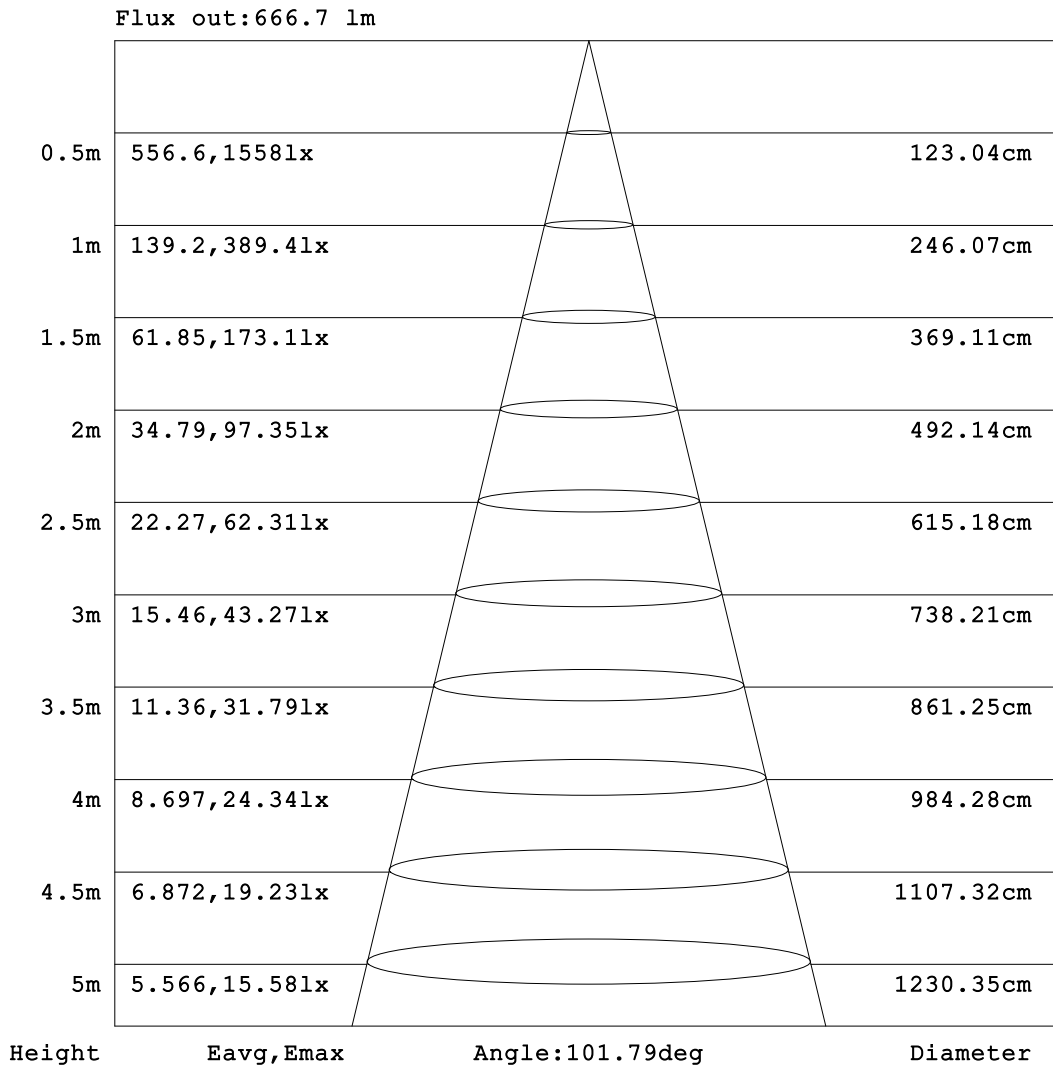


C Range: 0 - 360DEG
 C Interval: 30.0DEG
 Test Speed: HIGH
 Temperature:25.3°C
 Operators:YAO
 Test Date:2025-05-14

γ Range: 0 - 100DEG
 γ Interval: 1.0DEG
 Test System:EVERFINE GO-3000H_V1 SYSTEM V2.00.485
 Humidity:65.0%
 Test Distance:9.830m [K=1.0000]
 Remarks:

AAI Figure

Test:U:220.34V I:0.1577A P:12.737W PF:0.3668 Freq:49.99Hz UTHDi:0.00% ITHDi:0.00% KDisp:0 Lamp Flux:996.589x1 lm		
NAME: 6645	TYPE:	WEIGHT: 0
SPEC.: 12W	DIM.: 0	SERIAL No.: 1
MFR.: NORDECOR	SUR.:	Shielding Angle: 0



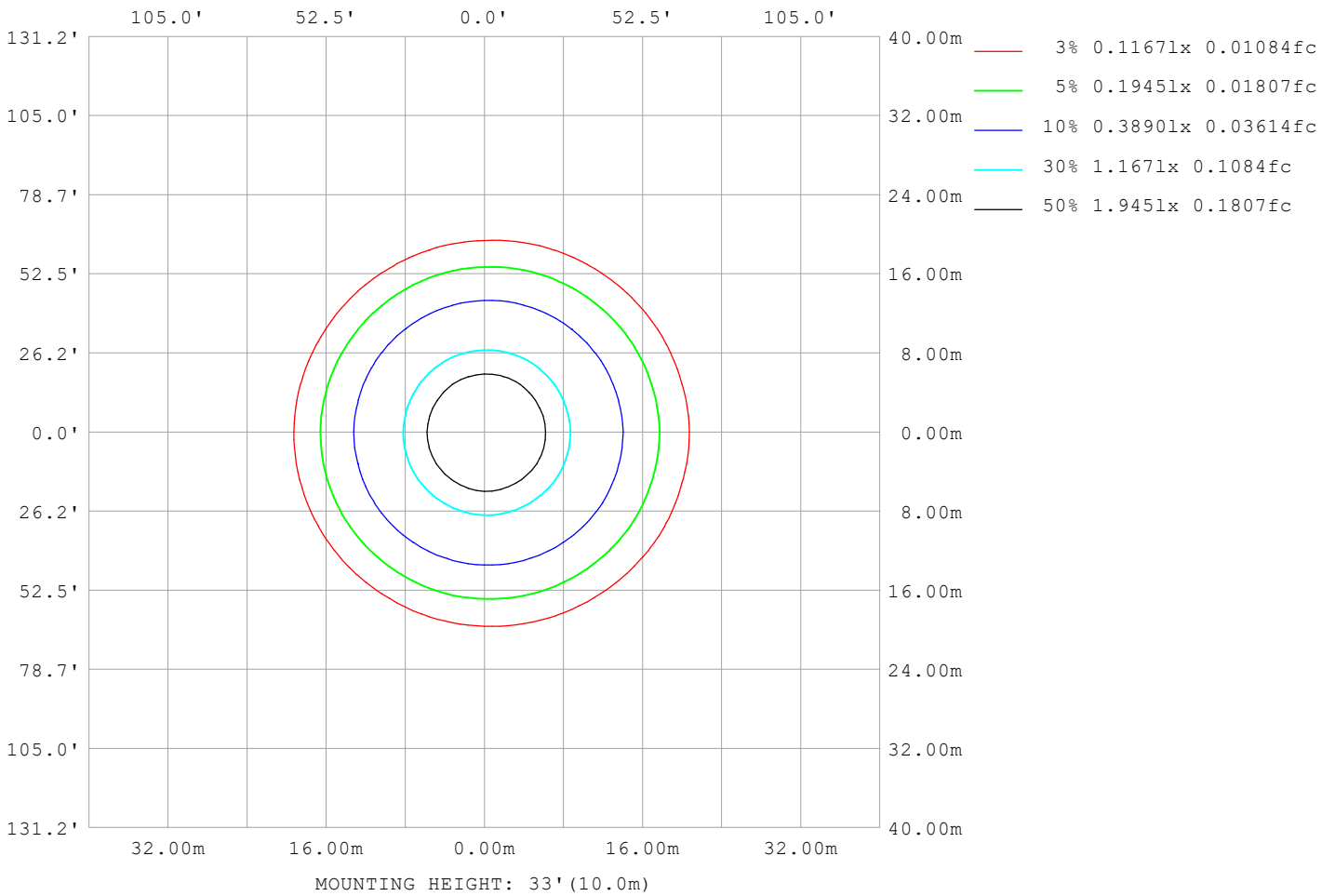
Note:The Curves indicate the illuminated area and the average illumination when the luminaire is at different distance.

C Range: 0 - 360DEG
 C Interval: 30.0DEG
 Test Speed: HIGH
 Temperature:25.3°C
 Operators:YAO
 Test Date:2025-05-14

γ Range: 0 - 100DEG
 γ Interval: 1.0DEG
 Test System:EVERFINE GO-3000H_V1 SYSTEM V2.00.485
 Humidity:65.0%
 Test Distance:9.830m [K=1.0000]
 Remarks:

ISOLUX DIAGRAM

Test:U:220.34V I:0.1577A P:12.737W PF:0.3668 Freq:49.99Hz UTHDi:0.00% ITHDi:0.00% KDisp:0 Lamp Flux:996.589x1 lm		
NAME: 6645	TYPE:	WEIGHT: 0
SPEC.: 12W	DIM.: 0	SERIAL No.: 1
MFR.: NORDECOR	SUR.:	Shielding Angle: 0



C Range: 0 - 360DEG
 C Interval: 30.0DEG
 Test Speed: HIGH
 Temperature:25.3°C
 Operators:YAO
 Test Date:2025-05-14

γ Range: 0 - 100DEG
 γ Interval: 1.0DEG
 Test System:EVERFINE GO-3000H_V1 SYSTEM V2.00.485
 Humidity:65.0%
 Test Distance:9.830m [K=1.0000]
 Remarks:

LED Avg.L Report

Test:U:220.34V I:0.1577A P:12.737W PF:0.3668 Freq:49.99Hz UTHDi:0.00% ITHDi:0.00% KDisp:0 Lamp Flux:996.589x1 lm		
NAME: 6645	TYPE:	WEIGHT: 0
SPEC.: 12W	DIM.: 0	SERIAL No.: 1
MFR.: NORDECOR	SUR.:	Shielding Angle: 0

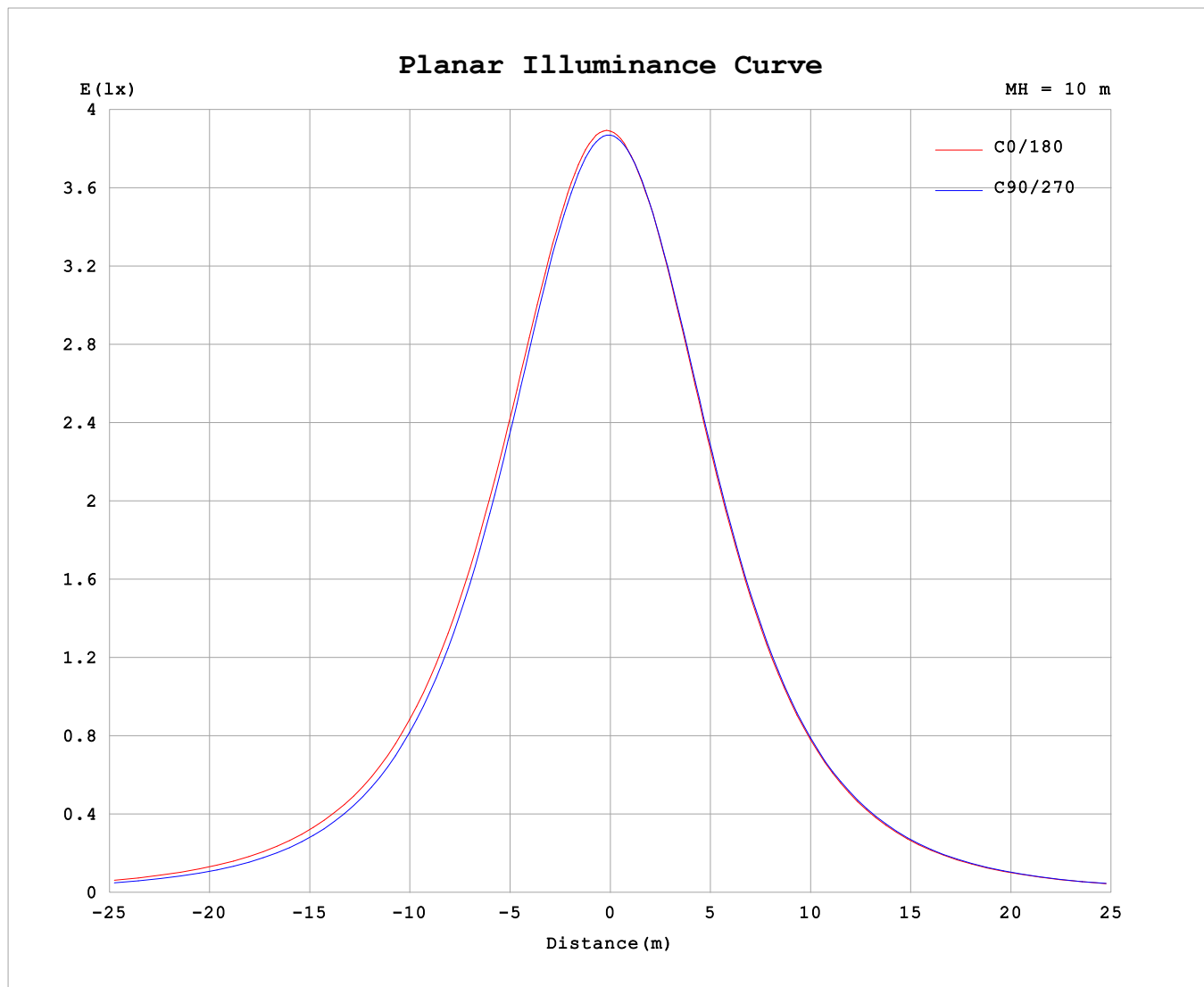
AvgL	cd/m2
L_0~180 (65) av	15310
L_0~180 (75) av	13455
L_0~180 (85) av	10594
L_90~270 (65) av	13889
L_90~270 (75) av	10715
L_90~270 (85) av	3367
L_45 (65) av	14550
L_45 (75) av	11912
L_45 (85) av	5842

Standard: GB/T 29293-2012

C Range: 0 - 360DEG
 C Interval: 30.0DEG
 Test Speed: HIGH
 Temperature:25.3°C
 Operators:YAO
 Test Date:2025-05-14

γ Range: 0 - 100DEG
 γ Interval: 1.0DEG
 Test System:EVERFINE GO-3000H_V1 SYSTEM V2.00.485
 Humidity:65.0%
 Test Distance:9.830m [K=1.0000]
 Remarks:

Planar Illuminance Curve



C Range: 0 - 360DEG
C Interval: 30.0DEG
Test Speed: HIGH
Temperature: 25.3°C
Operators: YAO
Test Date: 2025-05-14

γ Range: 0 - 100DEG
 γ Interval: 1.0DEG
Test System: EVERFINE GO-3000H_V1 SYSTEM V2.00.485
Humidity: 65.0%
Test Distance: 9.830m [K=1.0000]
Remarks:

LUMINOUS DISTRIBUTION INTENSITY DATA

Test:U:220.34V I:0.1577A P:12.737W PF:0.3668 Freq:49.99Hz UTHDi:0.00% ITHDi:0.00% KDisp:0 Lamp Flux:996.589x1 lm		
NAME: 6645	TYPE:	WEIGHT: 0
SPEC.: 12W	DIM.: 0	SERIAL No.: 1
MFR.: NORDECOR	SUR.:	Shielding Angle: 0

Table--1

UNIT: cd

C (DEG) \ γ (DEG)	0	30	60	90	120	150	180	210	240	270	300	330							
0	387	387	387	387	387	387	387	387	387	387	387	387							
5	388	388	387	386	385	383	382	382	383	384	386	387							
10	383	384	382	380	377	375	373	372	374	376	379	381							
15	374	375	372	371	365	363	361	358	362	363	370	372							
20	360	363	358	355	348	346	343	340	344	347	354	357							
25	344	346	339	336	328	326	322	319	324	327	335	340							
30	323	325	318	313	305	303	299	296	301	304	314	319							
35	300	302	293	288	280	277	274	271	275	279	289	296							
40	276	276	267	261	253	251	247	244	248	252	263	270							
45	250	249	239	232	225	223	220	217	220	224	235	244							
50	222	221	210	203	197	194	192	189	191	196	207	216							
55	195	192	182	173	167	165	163	160	161	167	178	189							
60	167	163	152	143	137	136	134	131	132	137	148	160							
65	138	133	122	113	108	106	105	102	102	107	118	130							
70	109	104	92.0	82.9	78.3	77.6	76.4	73.3	73.1	77.6	88.4	101							
75	80.4	74.4	62.5	54.1	50.4	50.5	50.0	46.8	45.9	49.7	59.8	72.4							
80	53.4	46.0	34.9	28.1	25.1	25.9	26.4	22.9	21.8	24.4	32.8	45.0							
85	28.1	19.6	11.7	6.26	4.96	5.88	6.45	3.72	3.30	4.73	9.66	19.2							
90	5.02	1.92	1.58	1.15	1.09	1.21	0.80	0.97	0.92	0.74	0.74	1.07							
95	1.11	1.23	1.91	2.44	2.08	1.38	0.99	0.97	1.51	1.60	1.44	0.82							
100	1.31	1.38	1.66	2.05	1.50	1.66	1.28	1.17	1.27	1.91	1.54	0.96							
105	0.00	0.00	0.00	0.00	0.00	0.00	0.00	0.00	0.00	0.00	0.00	0.00							
110	0.00	0.00	0.00	0.00	0.00	0.00	0.00	0.00	0.00	0.00	0.00	0.00							
115	0.00	0.00	0.00	0.00	0.00	0.00	0.00	0.00	0.00	0.00	0.00	0.00							
120	0.00	0.00	0.00	0.00	0.00	0.00	0.00	0.00	0.00	0.00	0.00	0.00							
125	0.00	0.00	0.00	0.00	0.00	0.00	0.00	0.00	0.00	0.00	0.00	0.00							
130	0.00	0.00	0.00	0.00	0.00	0.00	0.00	0.00	0.00	0.00	0.00	0.00							
135	0.00	0.00	0.00	0.00	0.00	0.00	0.00	0.00	0.00	0.00	0.00	0.00							
140	0.00	0.00	0.00	0.00	0.00	0.00	0.00	0.00	0.00	0.00	0.00	0.00							
145	0.00	0.00	0.00	0.00	0.00	0.00	0.00	0.00	0.00	0.00	0.00	0.00							
150	0.00	0.00	0.00	0.00	0.00	0.00	0.00	0.00	0.00	0.00	0.00	0.00							
155	0.00	0.00	0.00	0.00	0.00	0.00	0.00	0.00	0.00	0.00	0.00	0.00							
160	0.00	0.00	0.00	0.00	0.00	0.00	0.00	0.00	0.00	0.00	0.00	0.00							
165	0.00	0.00	0.00	0.00	0.00	0.00	0.00	0.00	0.00	0.00	0.00	0.00							
170	0.00	0.00	0.00	0.00	0.00	0.00	0.00	0.00	0.00	0.00	0.00	0.00							
175	0.00	0.00	0.00	0.00	0.00	0.00	0.00	0.00	0.00	0.00	0.00	0.00							
180	0.00	0.00	0.00	0.00	0.00	0.00	0.00	0.00	0.00	0.00	0.00	0.00							

C Range: 0 - 360DEG
 C Interval: 30.0DEG
 Test Speed: HIGH
 Temperature:25.3°C
 Operators:YAO
 Test Date:2025-05-14

γ Range: 0 - 100DEG
 γ Interval: 1.0DEG
 Test System:EVERFINE GO-3000H_V1 SYSTEM V2.00.485
 Humidity:65.0%
 Test Distance:9.830m [K=1.0000]
 Remarks: