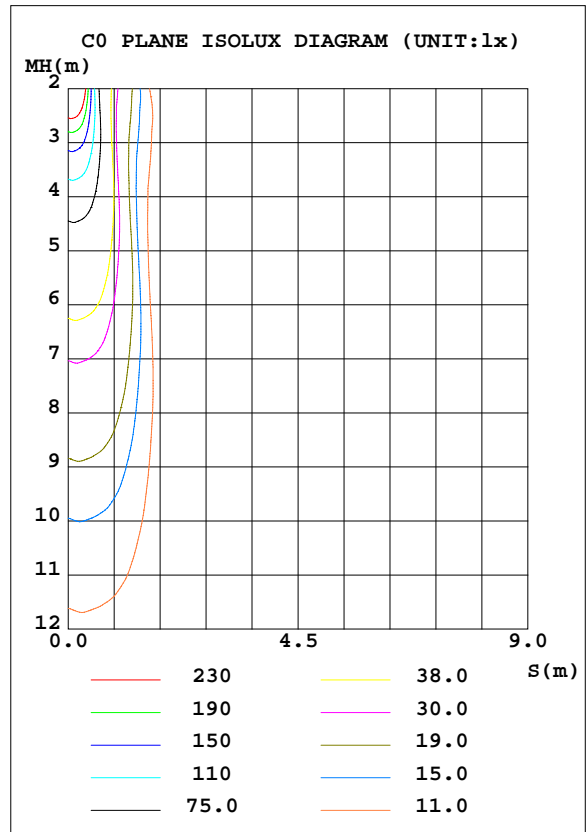
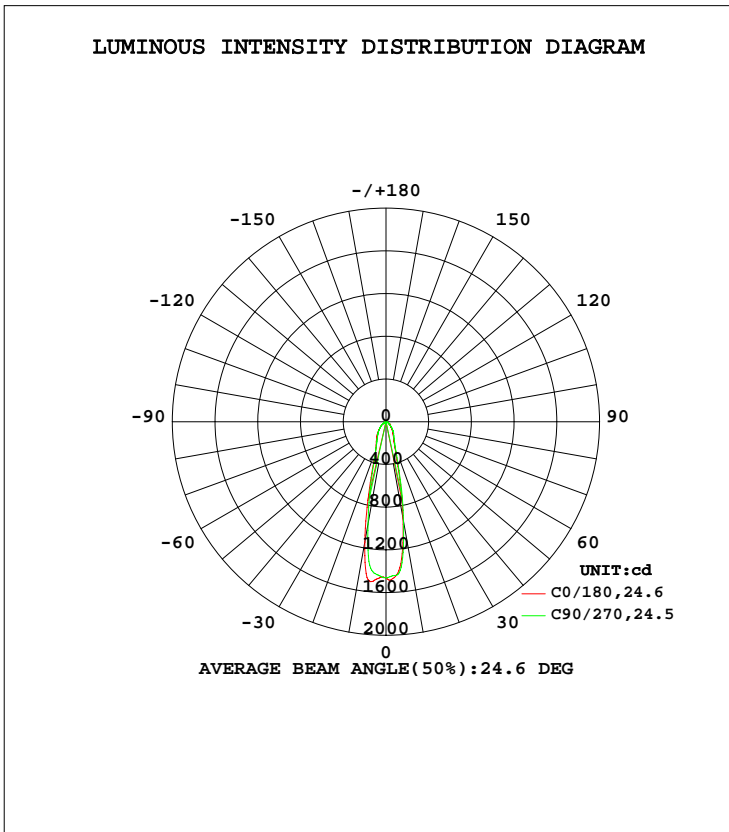


LUMINAIRE PHOTOMETRIC TEST REPORT

NAME: MR16-6W-3000K	TYPE:	WEIGHT:
SPEC.:	DIM.:	SERIAL No.:
MFR.: EVERFINE	SUR.:0.005	Shielding Angle:

DATA OF LAMP		PHOTOMETRIC DATA			
MODEL	1005	I _{max} (cd)	1505	S/MH(C0/180)	0.42
NOMINAL POWER(W)	6	LOR(%)	100.0	S/MH(C90/270)	0.41
RATED VOLTAGE(V)	230	TOTAL FLUX(lm)	560.38	η UP, DN(C0-180)	0.0,48.2
NOMINAL FLUX(lm)	560.381	CIE CLASS	DIRECT	η UP, DN(C180-360)	0.0,51.8
LAMPS INSIDE	1	η up(%)	0.0	CIBSE SHR NOM	0.00
TEST VOLTAGE(V)	230	η down(%)	100.0	CIBSE SHR MAX	1.00



C Range: 0 - 360DEG
 C Interval: 45.0DEG
 Test Speed: MEDIUM
 Temperature:25.3DEG
 Operators:fu
 Test Date:09 August 2022

γ Range: 0 - 90DEG
 γ Interval: 0.5DEG
 Test System:EVERFINE GO-i300_V1 SYSTEM V2.0.406.11
 Humidity:65.0%
 Test Distance:3.161m [K=1.0000]
 Remarks:

ZONAL FLUX DIAGRAM

ZONAL FLUX DIAGRAM:

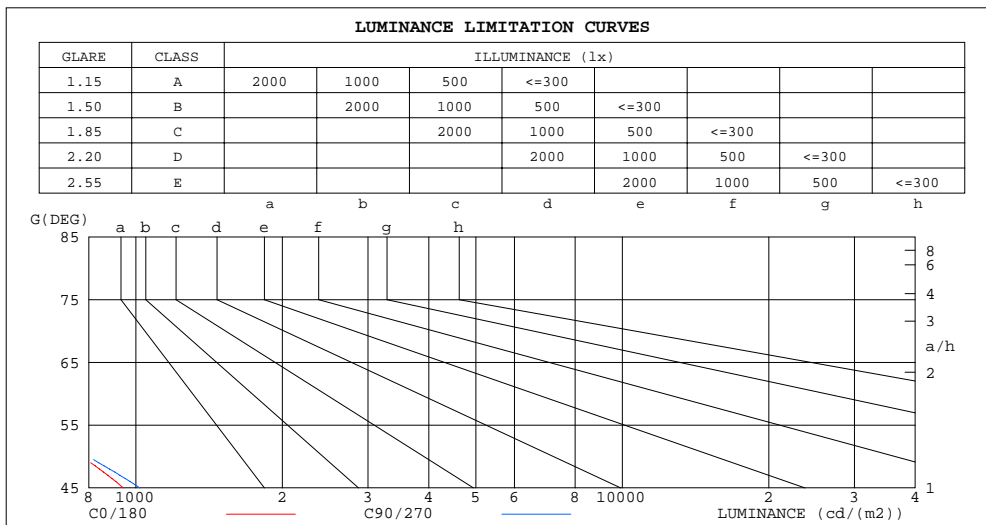
γ	C0	C45	C90	C135	C180	C225	C270	C315	γ	Φ zone	Φ total	Φ lum,lamp
10	916.4	888.3	945.6	1097	1146	1082	973.8	915.9	0- 10	123.0	123.0	21.9,21.9
20	239.0	241.0	258.0	277.4	282.3	288.4	280.4	251.3	10- 20	141.2	264.2	47.1,47.1
30	134.2	135.0	146.6	167.9	176.0	167.6	160.3	150.6	20- 30	90.69	354.9	63.3,63.3
40	84.43	85.62	94.84	108.5	107.6	106.0	103.7	95.76	30- 40	78.64	433.5	77.4,77.4
50	49.34	49.43	51.46	58.84	57.90	55.99	57.25	54.03	40- 50	57.57	491.1	87.6,87.6
60	28.88	29.64	25.34	29.32	29.33	29.04	28.65	30.29	50- 60	35.76	526.9	94,94
70	17.74	17.54	12.75	16.21	17.76	16.60	13.80	16.81	60- 70	21.82	548.7	97.9,97.9
80	6.122	3.614	3.007	4.127	6.444	4.004	3.399	3.814	70- 80	9.924	558.6	99.7,99.7
90	0.6288	0.0029	0.0783	0.0044	0.5762	0.0211	0.1918	0.0103	80- 90	1.777	560.4	100,100
100									90-100			
110									100-110			
120									110-120			
130									120-130			
140									130-140			
150									140-150			
160									150-160			
170									160-170			
180									170-180			
DEG	LUMINOUS INTENSITY:cd									UNIT:lm		

C Range: 0 - 360DEG
 C Interval: 45.0DEG
 Test Speed: MEDIUM
 Temperature:25.3DEG
 Operators:fu
 Test Date:09 August 2022

γ Range: 0 - 90DEG
 γ Interval: 0.5DEG
 Test System:EVERFINE GO-i300_V1 SYSTEM V2.0.406.11
 Humidity:65.0%
 Test Distance:3.161m [K=1.0000]
 Remarks:

LUMINANCE LIMITATION CURVES

NAME: MR16-6W-3000K	TYPE:	WEIGHT:
SPEC.:	DIM.:	SERIAL No.:
MFR.: EVERFINE	SUR.:0.005	Shielding Angle:



LUMINANCE cd/(m2)		
G (DEG)	C0/180	C90/270
85	373	31
80	357	173
75	428	244
70	526	371
65	553	456
60	586	505
55	659	629
50	778	798
45	942	1018

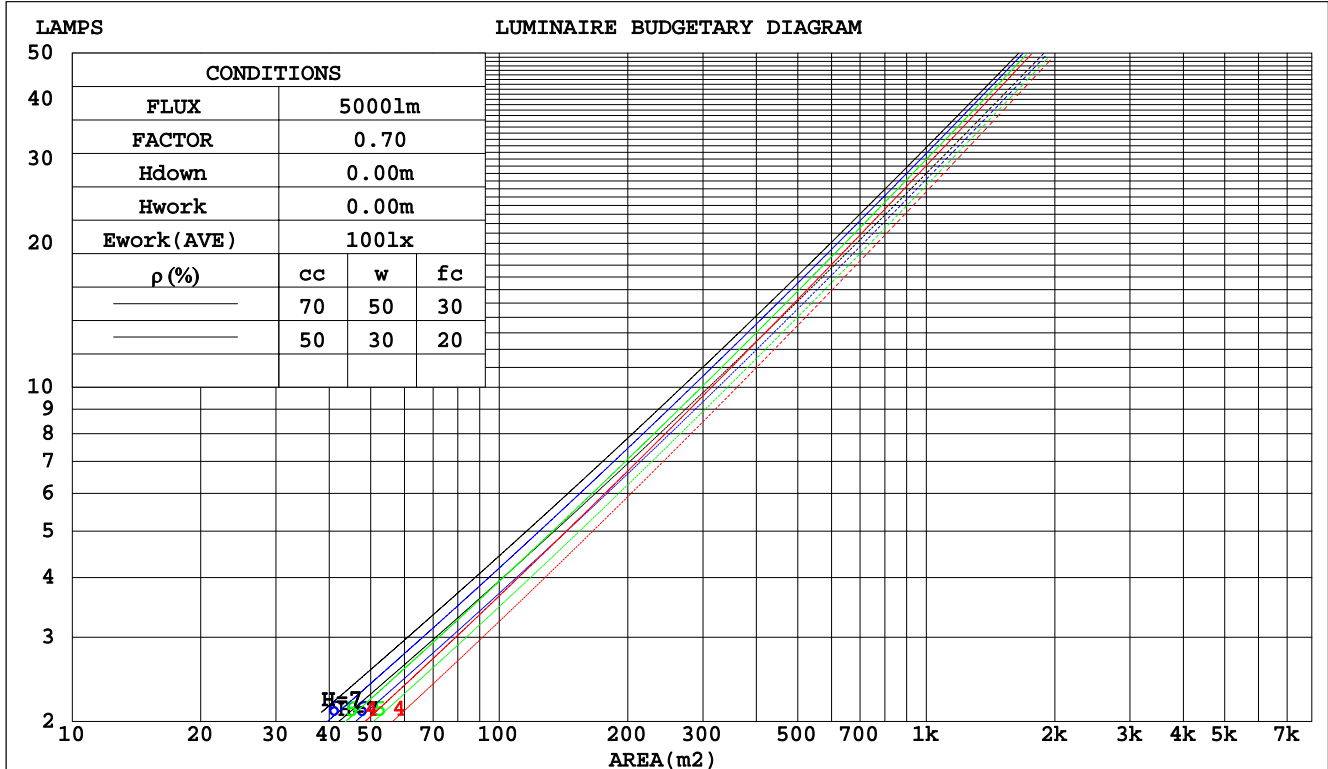
C Range: 0 - 360DEG
 C Interval: 45.0DEG
 Test Speed: MEDIUM
 Temperature: 25.3DEG
 Operators: fu
 Test Date: 09 August 2022

γ Range: 0 - 90DEG
 γ Interval: 0.5DEG
 Test System: EVERFINE GO-i300_V1 SYSTEM V2.0.406.11
 Humidity: 65.0%
 Test Distance: 3.161m [K=1.0000]
 Remarks:

CU AND LUMINAIRE BUDGETARY ESTIMATE DIAGRAM

NAME: MR16-6W-3000K	TYPE:	WEIGHT:
SPEC.:	DIM.:	SERIAL No.:
MFR.: EVERFINE	SUR.:0.005	Shielding Angle:

pcc	80%			70%			50%			30%			10%			0
	50%	30%	10%	50%	30%	10%	50%	30%	10%	50%	30%	10%	50%	30%	10%	0
pw																0
pfc																0
RCR	RCR:Room Cavity Ratio															
	Coefficients of Utilization(CU)															
0.0	1.19	1.19	1.19	1.16	1.16	1.16	1.11	1.11	1.11	1.06	1.06	1.06	1.02	1.02	1.02	1.00
1.0	1.10	1.07	1.04	1.08	1.05	1.03	1.03	1.01	.00	.00	.98	.97	.96	.95	.94	.92
2.0	1.01	.97	.93	.99	.95	.92	.96	.93	.90	.93	.90	.88	.90	.88	.86	.84
3.0	.94	.88	.84	.92	.87	.83	.90	.85	.82	.87	.84	.81	.85	.82	.79	.78
4.0	.87	.82	.77	.86	.81	.77	.84	.79	.76	.82	.78	.75	.80	.77	.74	.72
5.0	.82	.76	.71	.81	.75	.71	.79	.74	.70	.77	.73	.70	.76	.72	.69	.68
6.0	.77	.71	.67	.76	.71	.66	.75	.70	.66	.73	.69	.65	.72	.68	.65	.63
7.0	.73	.67	.63	.72	.67	.62	.71	.66	.62	.70	.65	.62	.69	.65	.61	.60
8.0	.69	.63	.59	.69	.63	.59	.68	.62	.59	.67	.62	.58	.66	.61	.58	.57
9.0	.66	.60	.56	.66	.60	.56	.65	.59	.56	.64	.59	.56	.63	.59	.55	.54
10.0	.63	.57	.54	.63	.57	.54	.62	.57	.53	.61	.56	.53	.60	.56	.53	.52



C Range: 0 - 360DEG
 C Interval: 45.0DEG
 Test Speed: MEDIUM
 Temperature:25.3DEG
 Operators:fu
 Test Date:09 August 2022

γ Range: 0 - 90DEG
 γ Interval: 0.5DEG
 Test System:EVERFINE GO-i300_V1 SYSTEM V2.0.406.11
 Humidity:65.0%
 Test Distance:3.161m [K=1.0000]
 Remarks:

WEC AND CCEC

NAME: MR16-6W-3000K	TYPE:	WEIGHT:
SPEC.:	DIM.:	SERIAL No.:
MFR.: EVERFINE	SUR.:0.005	Shielding Angle:

ρcc	80%			70%			50%			30%			10%			0
ρw	50%	30%	10%	50%	30%	10%	50%	30%	10%	50%	30%	10%	50%	30%	10%	0
ρfc	20%			20%			20%			20%			20%			0
RCR	RCR:Room Cavity Ratio						Wall Exitance Coefficients(WEC)									
0.0																
1.0	.198	.113	.036	.192	.109	.035	.179	.103	.033	.167	.096	.031	.156	.091	.029	
2.0	.189	.104	.032	.183	.101	.031	.172	.096	.030	.162	.091	.029	.153	.087	.027	
3.0	.178	.094	.028	.173	.092	.028	.163	.089	.027	.155	.085	.026	.147	.081	.025	
4.0	.166	.087	.025	.162	.085	.025	.154	.082	.024	.147	.079	.024	.140	.076	.023	
5.0	.156	.080	.023	.153	.078	.023	.146	.076	.022	.139	.073	.022	.133	.071	.021	
6.0	.147	.074	.021	.144	.073	.021	.138	.071	.021	.132	.069	.020	.127	.067	.020	
7.0	.139	.068	.019	.136	.068	.019	.130	.066	.019	.125	.064	.019	.121	.063	.018	
8.0	.131	.064	.018	.128	.063	.018	.124	.062	.018	.119	.060	.017	.115	.059	.017	
9.0	.124	.060	.017	.122	.059	.017	.118	.058	.016	.114	.057	.016	.110	.056	.016	
10.0	.118	.056	.016	.116	.056	.016	.112	.055	.015	.108	.054	.015	.105	.053	.015	

ρcc	80%			70%			50%			30%			10%			0
ρw	50%	30%	10%	50%	30%	10%	50%	30%	10%	50%	30%	10%	50%	30%	10%	0
ρfc	20%			20%			20%			20%			20%			0
RCR	RCR:Room Cavity Ratio						Ceiling Cavity Exitance Coefficients(CCEC)									
0.0	.190	.190	.190	.163	.163	.163	.111	.111	.111	.064	.064	.064	.020	.020	.020	
1.0	.173	.157	.143	.148	.135	.123	.101	.093	.085	.058	.054	.050	.019	.017	.016	
2.0	.159	.132	.110	.136	.114	.095	.093	.079	.067	.054	.046	.039	.017	.015	.013	
3.0	.147	.114	.087	.126	.098	.076	.086	.068	.053	.050	.040	.031	.016	.013	.010	
4.0	.136	.099	.071	.117	.086	.061	.081	.060	.043	.047	.035	.026	.015	.011	.008	
5.0	.128	.088	.058	.110	.076	.051	.075	.053	.036	.044	.031	.021	.014	.010	.007	
6.0	.120	.078	.049	.103	.068	.042	.071	.048	.030	.041	.028	.018	.013	.009	.006	
7.0	.113	.071	.041	.097	.061	.036	.067	.043	.026	.039	.025	.015	.013	.008	.005	
8.0	.106	.064	.036	.092	.056	.031	.063	.039	.022	.037	.023	.013	.012	.008	.004	
9.0	.101	.059	.031	.087	.051	.027	.060	.036	.019	.035	.021	.011	.011	.007	.004	
10.0	.096	.055	.027	.082	.047	.024	.057	.033	.017	.033	.020	.010	.011	.006	.003	

C Range: 0 - 360DEG
 C Interval: 45.0DEG
 Test Speed: MEDIUM
 Temperature:25.3DEG
 Operators:fu
 Test Date:09 August 2022

γ Range: 0 - 90DEG
 γ Interval: 0.5DEG
 Test System:EVERFINE GO-i300_V1 SYSTEM V2.0.406.11
 Humidity:65.0%
 Test Distance:3.161m [K=1.0000]
 Remarks:

UGR(Unified Glare Rating) Table

NAME: MR16-6W-3000K	TYPE:	WEIGHT:
SPEC.:	DIM.:	SERIAL No.:
MFR.: EVERFINE	SUR.:0.005	Shielding Angle:

ceiling/cavity	0.7	0.7	0.5	0.5	0.3	0.7	0.7	0.5	0.5	0.3
walls	0.5	0.3	0.5	0.3	0.3	0.5	0.3	0.5	0.3	0.3
working plane	0.2	0.2	0.2	0.2	0.2	0.2	0.2	0.2	0.2	0.2
Room dimensions	Viewed crosswise					Viewed endwise				
x = 2H y = 2H	10.8	11.8	11.0	12.0	12.1	10.7	11.7	10.9	11.9	12.0
3H	11.8	12.8	12.1	13.0	13.2	11.4	12.3	11.7	12.5	12.7
4H	12.2	13.1	12.5	13.3	13.5	11.5	12.4	11.8	12.6	12.9
6H	12.4	13.2	12.7	13.5	13.7	11.5	12.4	11.8	12.6	12.9
8H	12.5	13.3	12.8	13.5	13.8	11.5	12.3	11.8	12.6	12.8
12H	12.5	13.3	12.8	13.5	13.8	11.5	12.3	11.8	12.5	12.8
4H 2H	11.2	12.1	11.5	12.3	12.5	11.1	12.0	11.4	12.2	12.4
3H	12.4	13.2	12.7	13.5	13.7	12.0	12.8	12.3	13.0	13.3
4H	12.8	13.6	13.2	13.9	14.2	12.2	12.9	12.5	13.2	13.5
6H	13.1	13.7	13.5	14.1	14.4	12.2	12.9	12.6	13.2	13.5
8H	13.2	13.8	13.6	14.1	14.5	12.2	12.8	12.6	13.2	13.5
12H	13.3	13.8	13.7	14.2	14.6	12.2	12.7	12.6	13.1	13.5
8H 4H	12.9	13.5	13.3	13.8	14.2	12.3	12.9	12.7	13.2	13.6
6H	13.2	13.7	13.6	14.1	14.5	12.4	12.9	12.8	13.3	13.7
8H	13.3	13.8	13.8	14.2	14.6	12.4	12.8	12.8	13.2	13.7
12H	13.4	13.8	13.9	14.3	14.7	12.3	12.7	12.8	13.1	13.6
12H 4H	12.9	13.4	13.3	13.8	14.2	12.2	12.8	12.7	13.1	13.5
6H	13.2	13.6	13.6	14.0	14.5	12.4	12.8	12.8	13.2	13.6
8H	13.3	13.7	13.8	14.1	14.6	12.4	12.7	12.8	13.2	13.6
Variations with the observer position at spacings:										
S = 1.0H	+ 0.4 / - 0.5					+ 0.6 / - 0.8				
1.5H	+ 0.3 / - 0.3					+ 0.5 / - 0.5				
2.0H	+ 0.9 / - 0.6					+ 1.3 / - 1.1				

CIE Pub.117, 560.4 lm Total Lamp Luminous Flux Correct (8log(F/F0) = -2.0)

C Range: 0 - 360DEG
 C Interval: 45.0DEG
 Test Speed: MEDIUM
 Temperature:25.3DEG
 Operators:fu
 Test Date:09 August 2022

γ Range: 0 - 90DEG
 γ Interval: 0.5DEG
 Test System:EVERFINE GO-i300_V1 SYSTEM V2.0.406.11
 Humidity:65.0%
 Test Distance:3.161m [K=1.0000]
 Remarks:

UTILIZATION FACTORS TABLE

NAME: MR16-6W-3000K	TYPE:	WEIGHT:
SPEC.:	DIM.:	SERIAL No.:
MFR.: EVERFINE	SUR.:0.005	Shielding Angle:

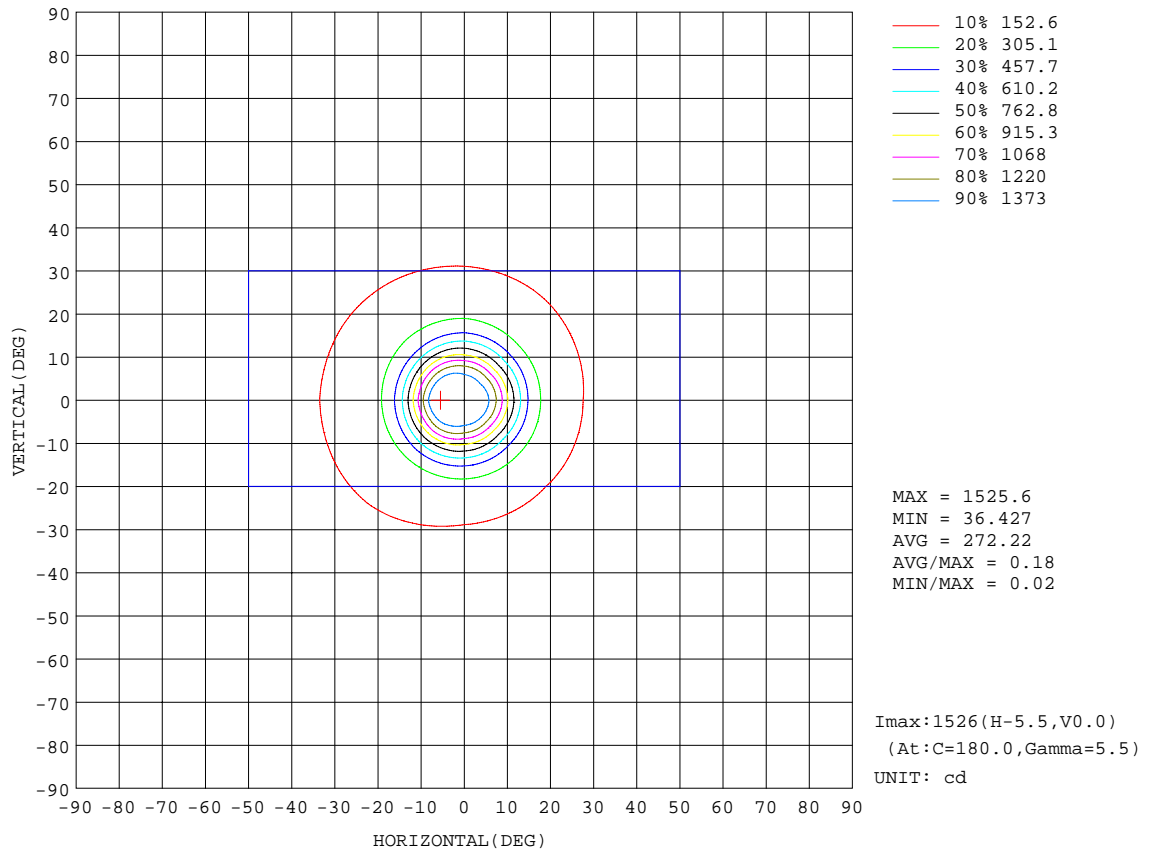
REFLECTANCE										
Ceiling	0.8	0.8	0.8	0.7	0.7	0.7	0.5	0.5	0.5	0
Walls	0.7	0.5	0.3	0.7	0.5	0.3	0.7	0.5	0.3	0
Working plane	0.2	0.2	0.2	0.2	0.2	0.2	0.2	0.2	0.2	0
ROOM INDEX	UTILIZATION FACTORS(PERCENT) $k(RI) \times RCR = 5$									
k = 0.60	77	69	64	77	69	64	76	69	64	60
0.80	86	78	73	85	78	73	84	77	73	68
1.00	92	85	80	91	84	80	89	84	79	74
1.25	97	90	86	96	90	85	94	88	84	79
1.50	100	94	90	99	93	89	97	92	88	83
2.00	105	99	95	103	98	94	100	96	93	87
2.50	107	102	98	105	101	97	102	98	95	89
3.00	109	105	101	107	103	100	104	100	98	91
4.00	112	108	105	109	106	104	106	103	101	93
5.00	113	110	108	111	108	106	107	105	103	95
ROOM INDEX	UF(total)									Direct
According to DIN EN 13032-2 2004			Suspended				SHRNOM = 1.25			

C Range: 0 - 360DEG
 C Interval: 45.0DEG
 Test Speed: MEDIUM
 Temperature:25.3DEG
 Operators:fu
 Test Date:09 August 2022

γ Range: 0 - 90DEG
 γ Interval: 0.5DEG
 Test System:EVERFINE GO-i300_V1 SYSTEM V2.0.406.11
 Humidity:65.0%
 Test Distance:3.161m [K=1.0000]
 Remarks:

ISOCANDELA DIAGRAM

NAME: MR16-6W-3000K	TYPE:	WEIGHT:
SPEC.:	DIM.:	SERIAL No.:
MFR.: EVERFINE	SUR.:0.005	Shielding Angle:

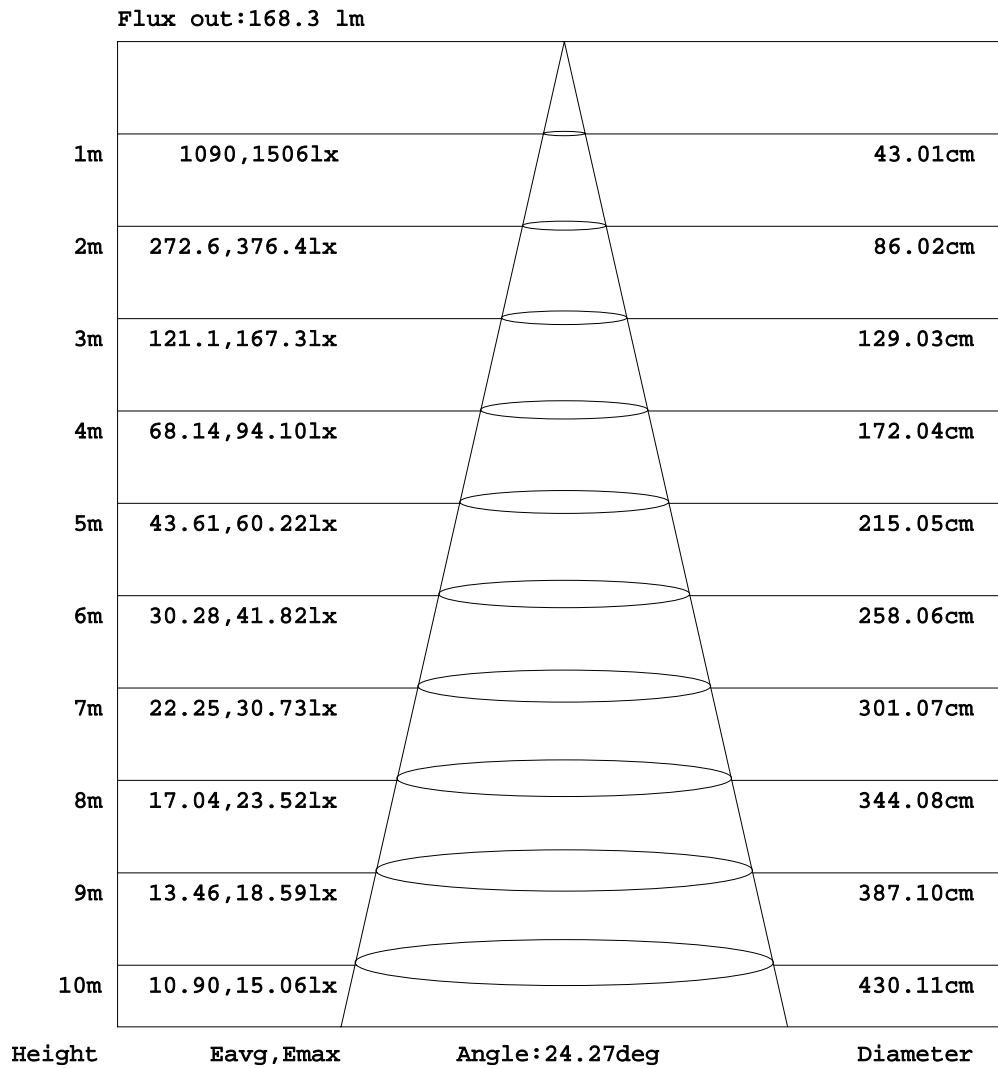


C Range: 0 - 360DEG
 C Interval: 45.0DEG
 Test Speed: MEDIUM
 Temperature:25.3DEG
 Operators:fu
 Test Date:09 August 2022

γ Range: 0 - 90DEG
 γ Interval: 0.5DEG
 Test System:EVERFINE GO-i300_V1 SYSTEM V2.0.406.11
 Humidity:65.0%
 Test Distance:3.161m [K=1.0000]
 Remarks:

AAI Figure

NAME: MR16-6W-3000K	TYPE:	WEIGHT:
SPEC.:	DIM.:	SERIAL No.:
MFR.: EVERFINE	SUR.:0.005	Shielding Angle:



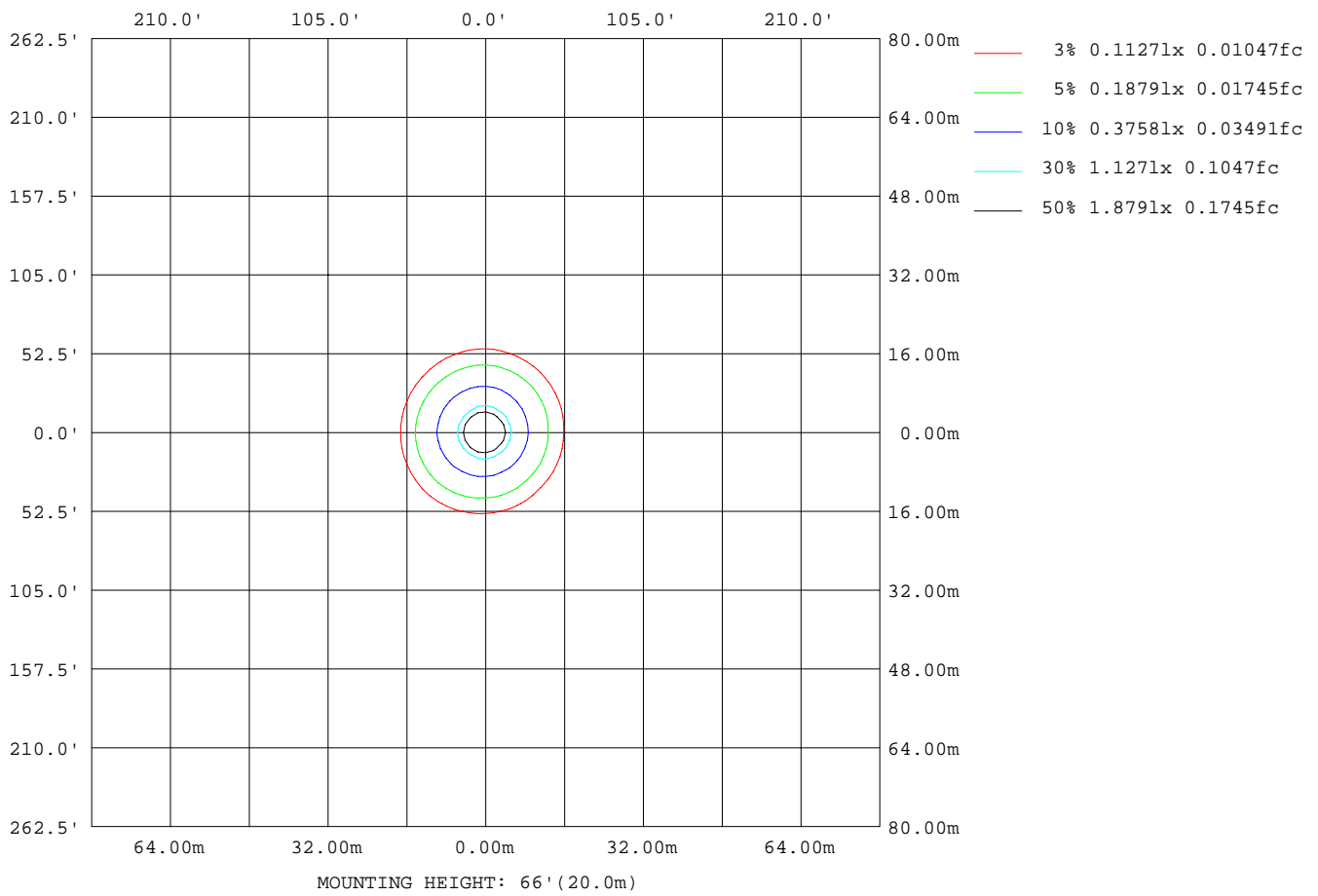
Note:The Curves indicate the illuminated area and the average illumination when the luminaire is at different distance.

C Range: 0 - 360DEG
 C Interval: 45.0DEG
 Test Speed: MEDIUM
 Temperature:25.3DEG
 Operators:fu
 Test Date:09 August 2022

γ Range: 0 - 90DEG
 γ Interval: 0.5DEG
 Test System:EVERFINE GO-i300_V1 SYSTEM V2.0.406.11
 Humidity:65.0%
 Test Distance:3.161m [K=1.0000]
 Remarks:

ISOLUX DIAGRAM

NAME: MR16-6W-3000K	TYPE:	WEIGHT:
SPEC.:	DIM.:	SERIAL No.:
MFR.: EVERFINE	SUR.:0.005	Shielding Angle:



C Range: 0 - 360DEG
 C Interval: 45.0DEG
 Test Speed: MEDIUM
 Temperature:25.3DEG
 Operators:fu
 Test Date:09 August 2022

γ Range: 0 - 90DEG
 γ Interval: 0.5DEG
 Test System:EVERFINE GO-i300_V1 SYSTEM V2.0.406.11
 Humidity:65.0%
 Test Distance:3.161m [K=1.0000]
 Remarks:

LED Avg.L Report

NAME: MR16-6W-3000K	TYPE:	WEIGHT:
SPEC.:	DIM.:	SERIAL No.:
MFR.: EVERFINE	SUR.:0.005	Shielding Angle:

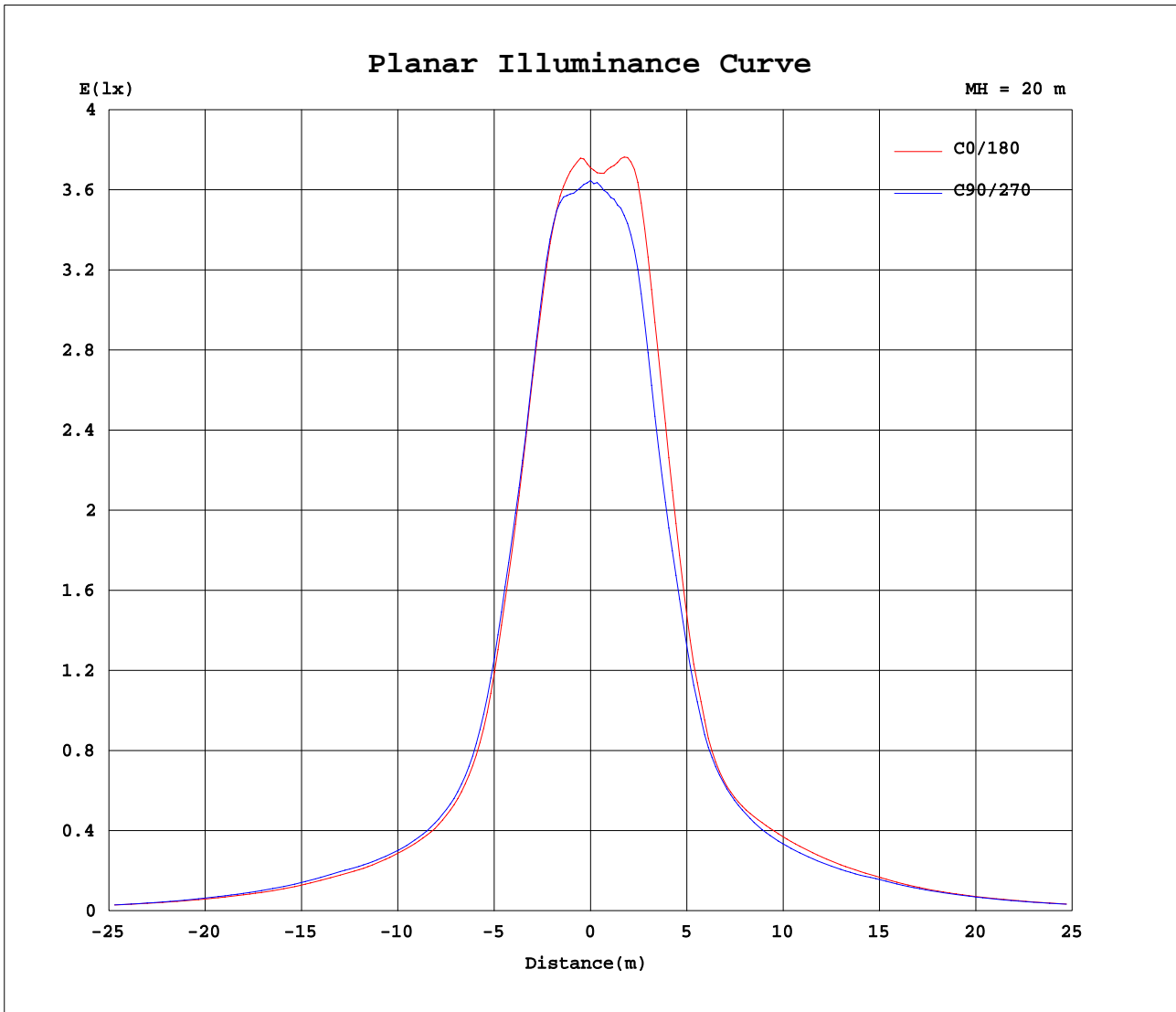
AvgL	cd/m2
L_0~180(65)av	538
L_0~180(75)av	445
L_0~180(85)av	363
L_90~270(65)av	476
L_90~270(75)av	254
L_90~270(85)av	40
L_45(65)av	530
L_45(75)av	336
L_45(85)av	81

Standard: GB/T 29293-2012

C Range: 0 - 360DEG
 C Interval: 45.0DEG
 Test Speed: MEDIUM
 Temperature:25.3DEG
 Operators:fu
 Test Date:09 August 2022

γ Range: 0 - 90DEG
 γ Interval: 0.5DEG
 Test System:EVERFINE GO-i300_V1 SYSTEM V2.0.406.11
 Humidity:65.0%
 Test Distance:3.161m [K=1.0000]
 Remarks:

Planar Illuminance Curve



C Range: 0 - 360DEG
 C Interval: 45.0DEG
 Test Speed: MEDIUM
 Temperature: 25.3DEG
 Operators: fu
 Test Date: 09 August 2022

γ Range: 0 - 90DEG
 γ Interval: 0.5DEG
 Test System: EVERFINE GO-i300_V1 SYSTEM V2.0.406.11
 Humidity: 65.0%
 Test Distance: 3.161m [K=1.0000]
 Remarks:

LUMINOUS DISTRIBUTION INTENSITY DATA

NAME: MR16-6W-3000K	TYPE:	WEIGHT:
SPEC.:	DIM.:	SERIAL No.:
MFR.: EVERFINE	SUR.:0.005	Shielding Angle:

Table--1

UNIT: cd

C(DEG) γ (DEG)	0	45	90	135	180	225	270	315										
0	1464	1464	1464	1464	1464	1464	1464	1464										
5	1397	1409	1420	1471	1502	1465	1410	1404										
10	916	888	946	1097	1146	1082	974	916										
15	435	430	476	537	540	514	502	456										
20	239	241	258	277	282	288	280	251										
25	171	171	183	208	218	214	203	187										
30	134	135	147	168	176	168	160	151										
35	109	111	122	139	141	136	130	123										
40	84.4	85.6	94.8	109	108	106	104	95.8										
45	65.7	66.0	72.3	81.7	79.7	78.4	78.6	73.0										
50	49.3	49.4	51.5	58.8	57.9	56.0	57.2	54.0										
55	37.3	38.5	36.2	41.8	40.5	40.0	40.6	40.3										
60	28.9	29.6	25.3	29.3	29.3	29.0	28.6	30.3										
65	23.1	23.3	19.3	21.3	22.4	22.0	20.9	23.1										
70	17.7	17.5	12.7	16.2	17.8	16.6	13.8	16.8										
75	10.9	8.85	6.33	8.96	12.1	8.35	6.84	8.60										
80	6.12	3.61	3.01	4.13	6.44	4.00	3.40	3.81										
85	3.20	0.45	0.27	0.84	3.13	0.91	0.42	0.62										
90	0.63	0.00	0.08	0.00	0.58	0.02	0.19	0.01										

C Range: 0 - 360DEG
 C Interval: 45.0DEG
 Test Speed: MEDIUM
 Temperature:25.3DEG
 Operators:fu
 Test Date:09 August 2022

γ Range: 0 - 90DEG
 γ Interval: 0.5DEG
 Test System:EVERFINE GO-i300_V1 SYSTEM V2.0.406.11
 Humidity:65.0%
 Test Distance:3.161m [K=1.0000]
 Remarks: