

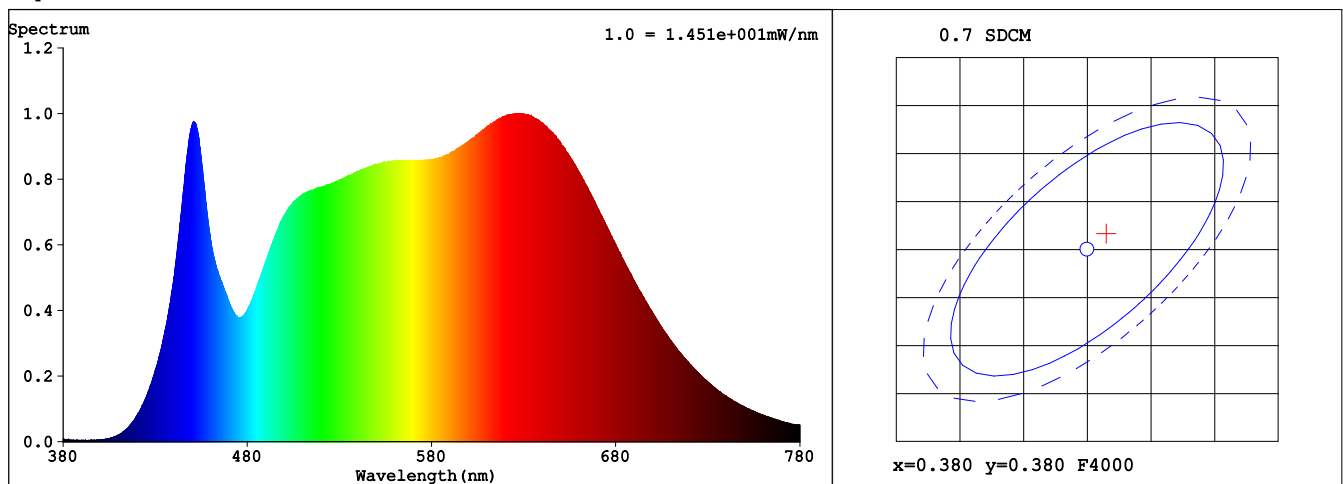
Spectrum Test Report

Sample	:	Date	:	2025-11-22
Specification	:	Sam. Status	:	
Sample No.	:	Standard	:	
Manufacturer	:	Instrument	:	HaasSuite(EVERFINE)
Assessor	:	Test by	:	DAMIN
Remark	:			
Device SN	:			

Test Condition

Temperature	:	25.3Deg	RH	:	65.0%
WL Range	:	380nm-780nm	IP	:	53026 (81%)
Test Mode	:	Fast Test	T	:	1272 ms
Sensitivity	:	Low			

Spectrum



Colorimetric Parameters

Chromaticity Coordinate: $x = 0.3815$ $y = 0.3817$ / $u' = 0.2239$ $v' = 0.5039$ ($duv=1.97e-03$)
 CCT= 4007K Prcp WL: Ld=578.0nm Purity=29.0%
 Peak WL: Lp=627nm FWHM: =202.1nm Ratio:R=20.1% G=75.5% B=4.3%
 Render Index: Ra = 97.2 AvgR = 95.4 TM30:Rf=96 Rg=100

EEl: 0.14859 A+

R1 =98 R2 =97 R3 =96 R4 =98 R5 =97 R6 =96 R7 =99
 R8 =96 R9 =89 R10=94 R11=97 R12=82 R13=98 R14=97 R15=97

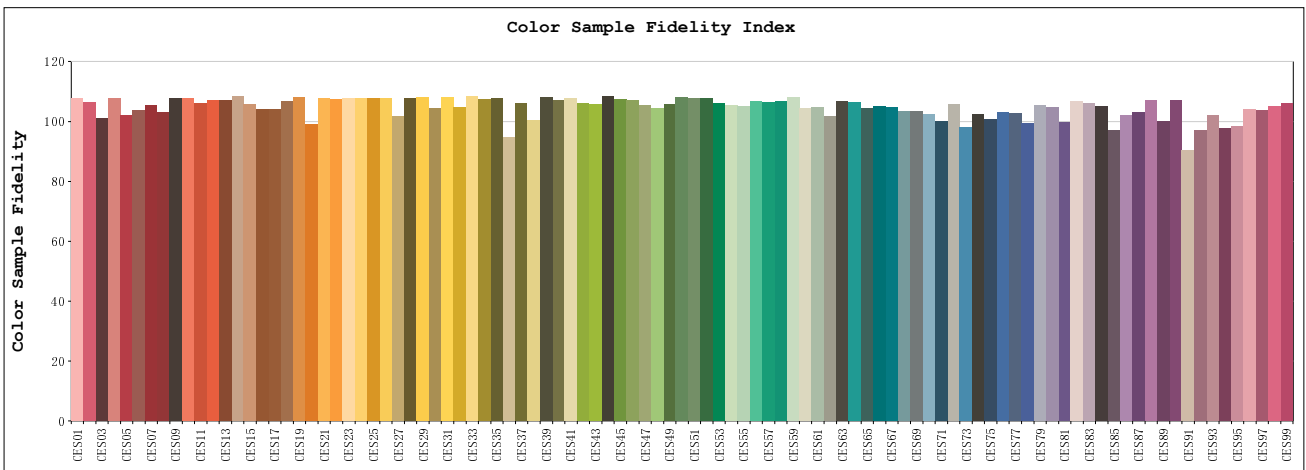
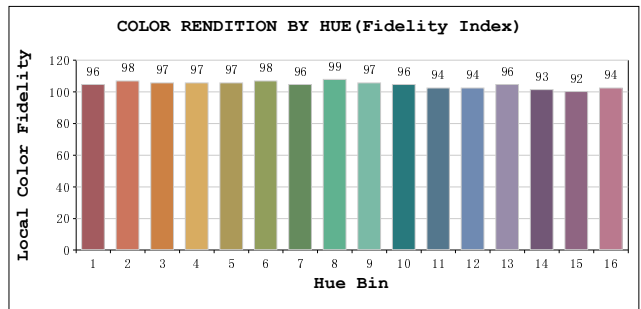
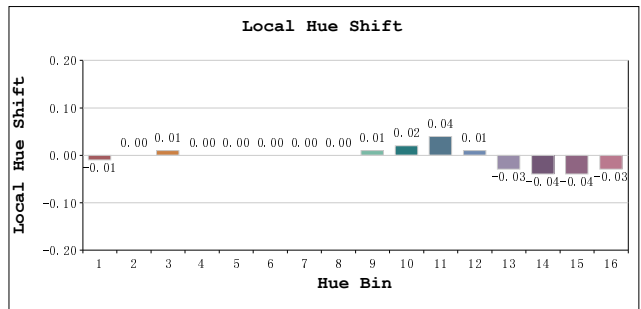
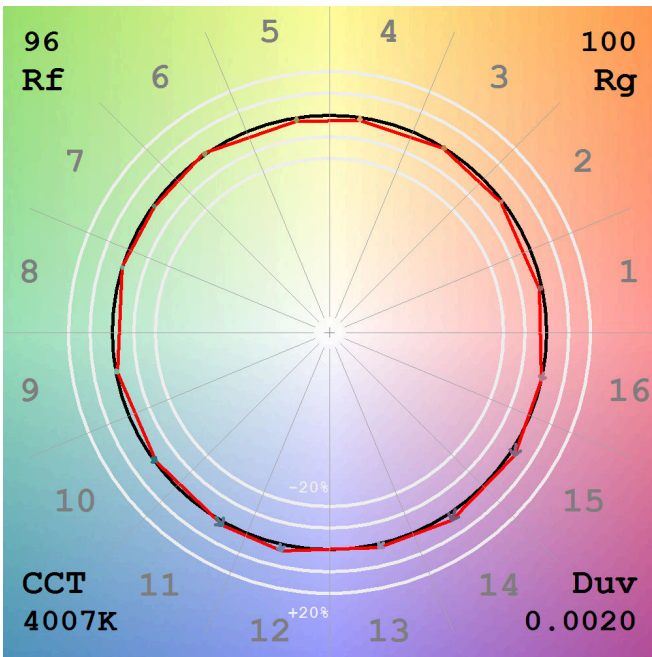
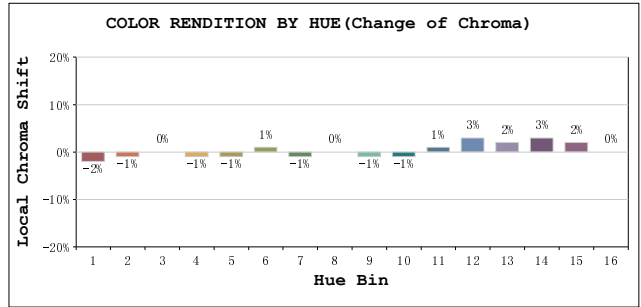
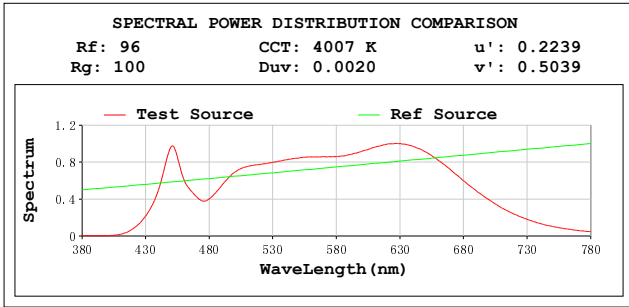
Photometric & Radiometric Parameters

Flux = 881.49 lm Eff. : 85.58 lm/W Fe = 3.1634 W Scotopic:1608.5 S/P:1.8247

Electrical parameters

V = 126.80 V I = 0.08500 A P = 10.30 W PF = 0.9530 F=59.99 Hz

TM30



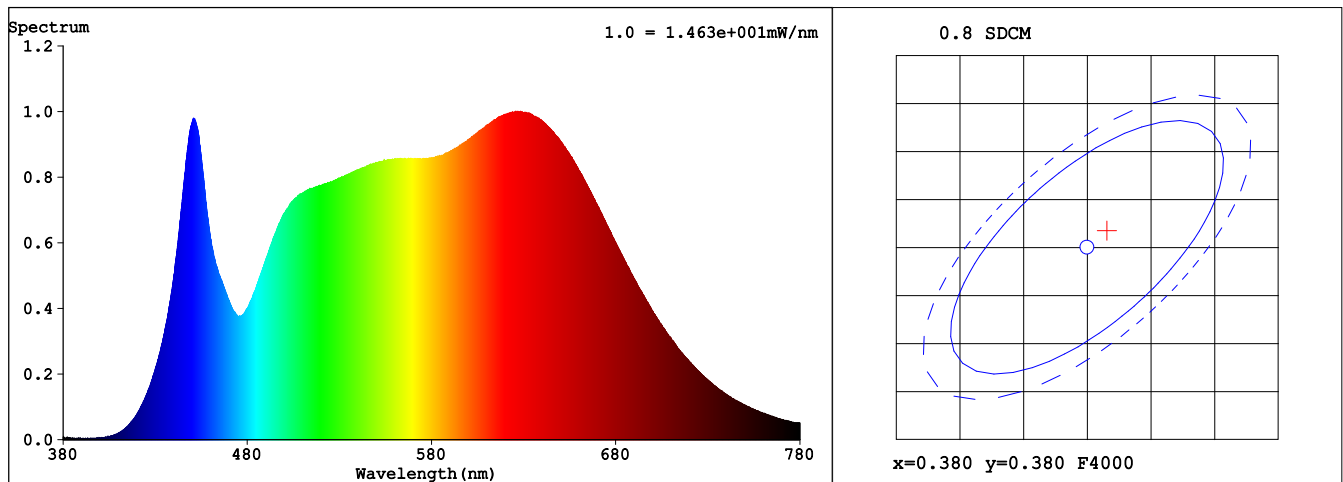
Spectrum Test Report

Sample :	Date : 2025-11-22
Specification : 1142	Sam. Status :
Sample No. : 2	Standard :
Manufacturer :	Instrument : HaasSuite(EVERFINE)
Assessor : damin	Test by : DAMIN
Remark : ---	
Device SN : HAAS-2000	

Test Condition

Temperature : 25.3Deg	RH : 65.0%
WL Range : 380nm-780nm	IP : 53423 (82%)
Test Mode : Fast Test	T : 1272 ms
Sensitivity : Low	

Spectrum



Colorimetric Parameters

Chromaticity Coordinate: $x = 0.3815$ $y = 0.3817$ / $u' = 0.2239$ $v' = 0.5039$ ($duv=1.99e-03$)
 CCT= 4007K Prcp WL: Ld=578.0nm Purity=29.1%
 Peak WL: Lp=627nm FWHM: =202.1nm Ratio:R=20.1% G=75.5% B=4.3%
 Render Index: Ra = 97.2 AvgR = 95.4 TM30:Rf=96 Rg=100

EEl: 0.15056 A+

R1 =98 R2 =97 R3 =96 R4 =98 R5 =97 R6 =96 R7 =99
 R8 =96 R9 =89 R10=94 R11=97 R12=82 R13=98 R14=97 R15=97

Photometric & Radiometric Parameters

Flux = 888.04 lm Eff. : 84.58 lm/W Fe = 3.1871 W Scotopic:1620.3 S/P:1.8245

Electrical parameters

V = 219.90 V I = 0.05300 A P = 10.50 W PF = 0.8920 F=59.99 Hz

TM30

