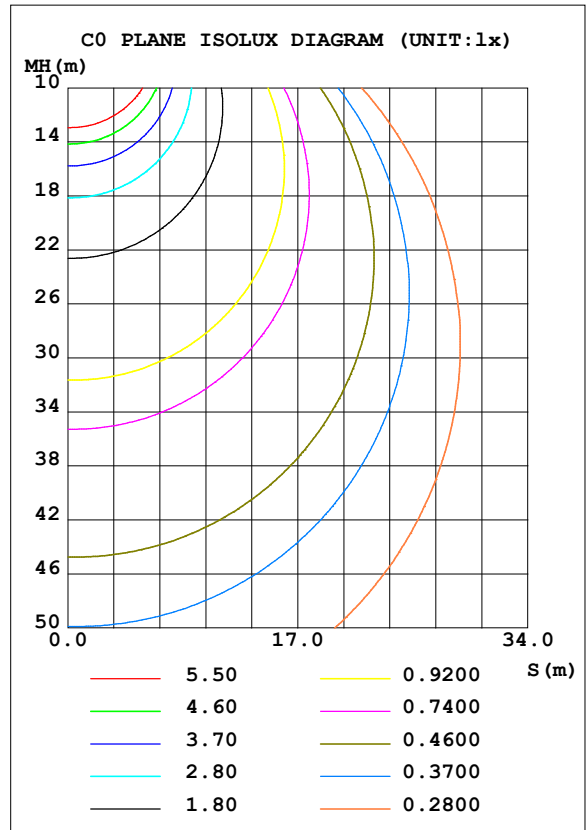
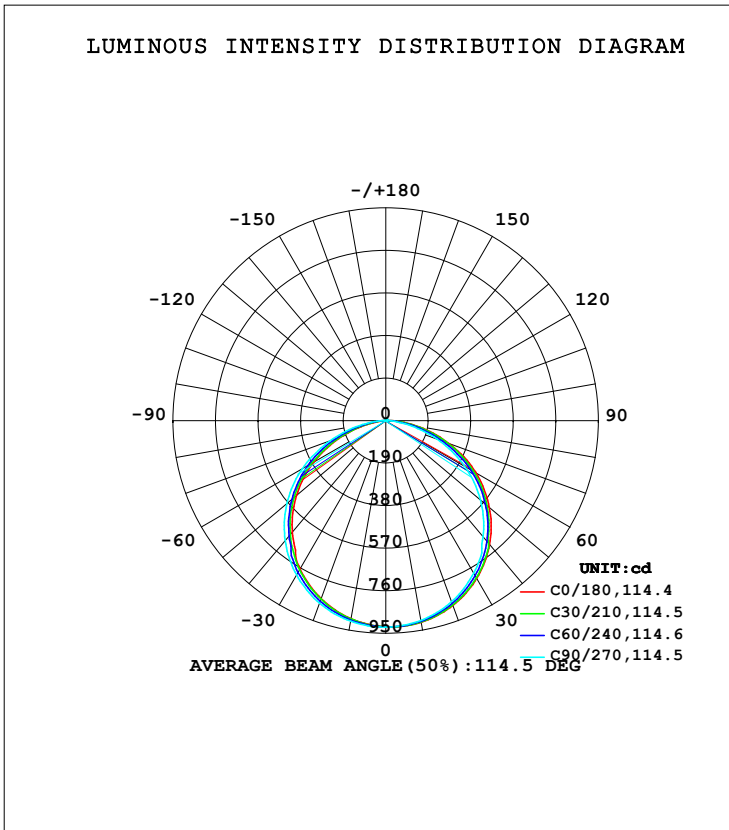


LUMINAIRE PHOTOMETRIC TEST REPORT

Test:U:12.00V I:1.885A P:22.62W PF:1.000 Freq:49.97Hz Lamp Flux:2704.67x1 lm		
NAME: 7156 2835 240LED/M 2700K IRC90 12V	TYPE:	WEIGHT:
SPEC.:	DIM.:	SERIAL No.:
MFR.:	SUR.:	Shielding Angle:

DATA OF LAMP		PHOTOMETRIC DATA Eff: 119.57 lm/W			
MODEL		I _{max} (cd)	923.2	S/MH (C0/180)	1.24
NOMINAL POWER (W)		LOR (%)	100.0	S/MH (C90/270)	1.28
RATED VOLTAGE (V)	12	TOTAL FLUX (lm)	2704.7	η UP, DN (C0-180)	0.5, 49.5
NOMINAL FLUX (lm)	2704.67	CIE CLASS	DIRECT	η UP, DN (C180-360)	0.6, 49.4
LAMPS INSIDE	1	η up (%)	1.1	CIBSE SHR NOM	1.25
TEST VOLTAGE (V)	12	η down (%)	98.9	CIBSE SHR MAX	1.35



C Range: 0 - 360DEG
 C Interval: 30.0DEG
 Test Speed: HIGH
 Temperature: 25.3DEG
 Operators:
 Test Date: 2024-03-04

γ Range: 0 - 180DEG
 γ Interval: 1.0DEG
 Test System: EVERFINE GO-2000A_V1 SYSTEM V2.0.354
 Humidity: 65.0%
 Test Distance: 11.227m [K=1.1463]
 Remarks:

ZONAL FLUX DIAGRAM

ZONAL FLUX DIAGRAM:

γ	C0	C45	C90	C135	C180	C225	C270	C315	γ	Φ zone	Φ total	%lum, lamp
10	914.6	911.3	905.7	899.4	897.8	901.5	909.3	915.0	0- 10	87.26	87.26	3.23,3.23
20	878.0	872.0	860.3	847.5	845.3	852.9	867.1	878.5	10- 20	250.8	338.1	12.5,12.5
30	813.0	804.2	786.6	768.0	765.6	776.6	796.4	813.2	20- 30	382.6	720.6	26.6,26.6
40	722.1	708.0	676.1	657.0	649.7	668.3	698.9	719.1	30- 40	464.6	1185	43.8,43.8
50	603.4	585.6	552.5	526.8	521.1	541.3	576.5	599.6	40- 50	484.2	1669	61.7,61.7
60	464.2	444.6	406.2	375.9	371.6	394.0	431.6	459.1	50- 60	440.6	2110	78,78
70	301.8	283.0	244.8	209.3	208.6	228.0	265.0	297.9	60- 70	333.5	2444	90.3,90.3
80	140.2	122.8	89.51	60.99	59.32	76.70	106.9	136.5	70- 80	184.4	2628	97.2,97.2
90	16.42	10.65	1.696	1.693	1.758	2.314	2.081	15.49	80- 90	47.49	2675	98.9,98.9
100	1.886	1.982	2.209	2.261	2.566	2.606	2.469	2.173	90-100	3.000	2678	99,99
110	2.599	2.873	3.278	3.294	3.694	3.716	3.597	3.176	100-110	2.903	2681	99.1,99.1
120	3.632	3.858	4.394	4.333	4.845	4.874	4.760	4.280	110-120	3.780	2685	99.3,99.3
130	4.736	4.927	5.438	5.366	5.831	5.782	5.769	5.319	120-130	4.366	2689	99.4,99.4
140	5.710	5.871	6.341	6.293	6.697	6.613	6.600	6.192	130-140	4.514	2694	99.6,99.6
150	6.636	6.744	7.089	7.088	7.303	7.284	7.277	6.981	140-150	4.178	2698	99.8,99.8
160	7.384	7.497	7.801	7.771	7.908	7.848	7.859	7.634	150-160	3.407	2702	99.9,99.9
170	8.227	8.180	8.442	8.358	8.490	8.388	8.488	8.252	160-170	2.266	2704	100,100
180	8.845	8.679	8.798	8.732	8.869	8.685	8.786	8.703	170-180	0.8120	2705	100,100
DEG	LUMINOUS INTENSITY:cd									UNIT:lm		

Conical surface Flux(90deg): 1428.7 lm

%lum = 52.8%

%lamp = 52.8%

Conical surface Flux(120deg): 2110 lm

%lum = 78.0%

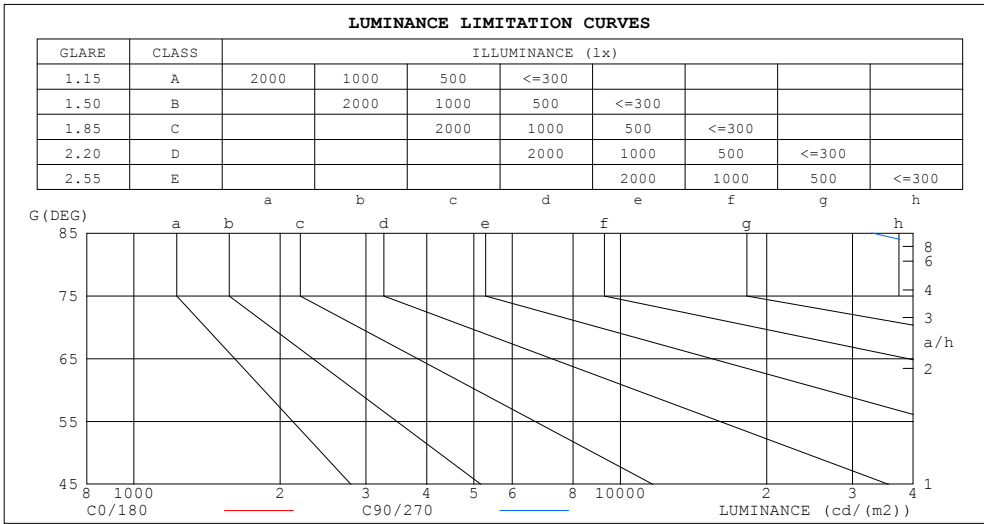
%lamp = 78.0%

C Range: 0 - 360DEG
 C Interval: 30.0DEG
 Test Speed: HIGH
 Temperature:25.3DEG
 Operators:
 Test Date:2024-03-04

γ Range: 0 - 180DEG
 γ Interval: 1.0DEG
 Test System:EVERFINE GO-2000A_V1 SYSTEM V2.0.354
 Humidity:65.0%
 Test Distance:11.227m [K=1.1463]
 Remarks:

LUMINANCE LIMITATION CURVES

Test:U:12.00V I:1.885A P:22.62W PF:1.000 Freq:49.97Hz Lamp Flux:2704.67x1 lm		
NAME: 7156 2835 240LED/M 2700K IRC90 12V	TYPE:	WEIGHT:
SPEC.:	DIM.:	SERIAL No.:
MFR.:	SUR.:	Shielding Angle:



LUMINANCE cd/(m2)		
G (DEG)	C0/180	C90/270
85	78733	32894
80	80753	51549
75	84952	63292
70	88234	71577
65	91668	77286
60	92837	81247
55	93491	84017
50	93875	85953
45	94232	87313

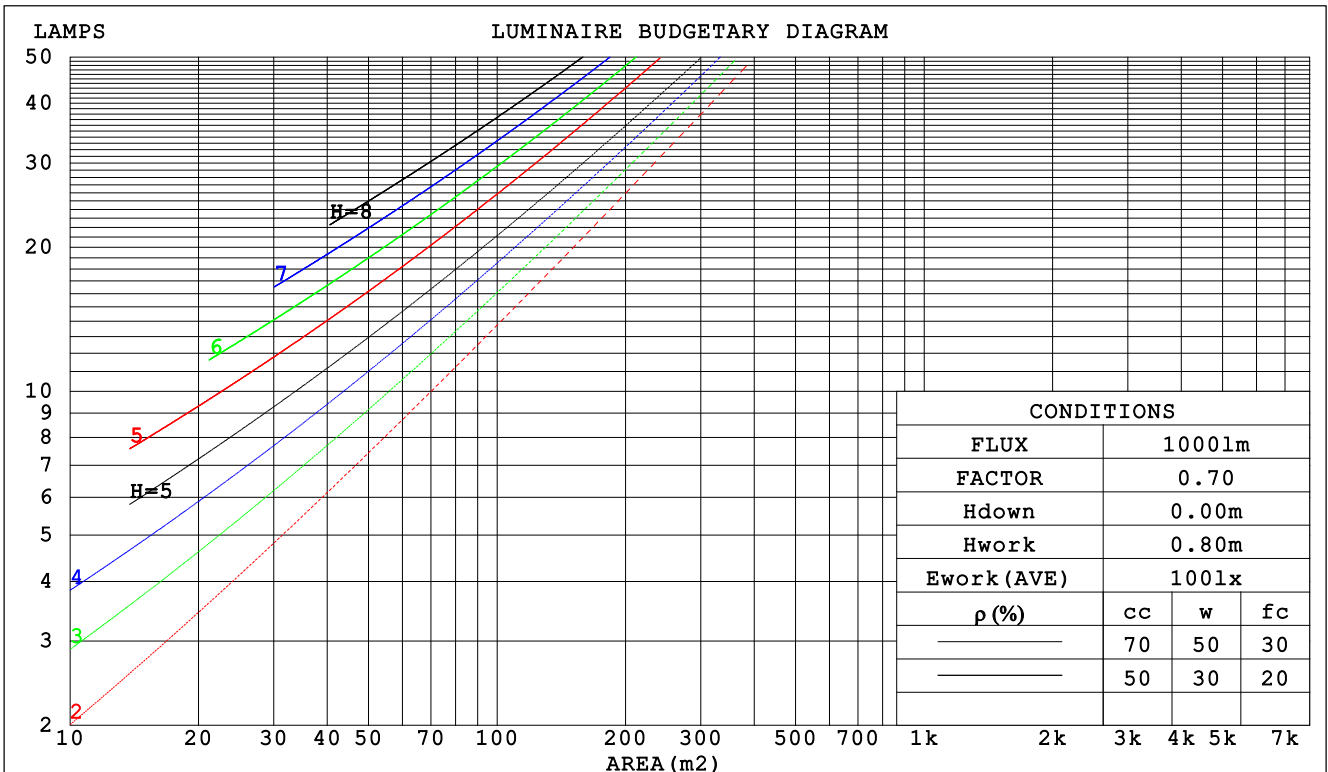
C Range: 0 - 360DEG
 C Interval: 30.0DEG
 Test Speed: HIGH
 Temperature:25.3DEG
 Operators:
 Test Date:2024-03-04

γ Range: 0 - 180DEG
 γ Interval: 1.0DEG
 Test System:EVERFINE GO-2000A_V1 SYSTEM V2.0.354
 Humidity:65.0%
 Test Distance:11.227m [K=1.1463]
 Remarks:

CU AND LUMINAIRE BUDGETARY ESTIMATE DIAGRAM

Test:U:12.00V I:1.885A P:22.62W PF:1.000 Freq:49.97Hz Lamp Flux:2704.67x1 lm		
NAME: 7156 2835 240LED/M 2700K IRC90 12V	TYPE:	WEIGHT:
SPEC.:	DIM.:	SERIAL No.:
MFR.:	SUR.:	Shielding Angle:

ρ_{cc}	80%			70%			50%			30%			10%			0
ρ_w	50%	30%	10%	50%	30%	10%	50%	30%	10%	50%	30%	10%	50%	30%	10%	0
ρ_{fc}	20%			20%			20%			20%			20%			0
RCR	RCR:Room Cavity Ratio						Coefficients of Utilization(CU)									
0.0	1.19	1.19	1.19	1.16	1.16	1.16	1.11	1.11	1.11	1.06	1.06	1.06	1.01	1.01	1.01	.99
1.0	1.04	.99	.96	1.01	.97	.94	.97	.94	.91	.93	.90	.88	.89	.87	.85	.83
2.0	.90	.83	.78	.88	.82	.77	.85	.79	.75	.81	.77	.73	.78	.74	.71	.69
3.0	.79	.71	.64	.77	.70	.64	.74	.68	.62	.71	.66	.61	.69	.64	.60	.58
4.0	.70	.61	.54	.69	.60	.54	.66	.59	.53	.63	.57	.52	.61	.56	.51	.49
5.0	.62	.53	.47	.61	.53	.46	.59	.52	.46	.57	.50	.45	.55	.49	.45	.42
6.0	.56	.47	.41	.55	.47	.41	.53	.46	.40	.51	.45	.40	.50	.44	.39	.37
7.0	.51	.42	.36	.50	.42	.36	.48	.41	.35	.47	.40	.35	.45	.39	.35	.33
8.0	.46	.38	.32	.46	.38	.32	.44	.37	.32	.43	.36	.31	.42	.36	.31	.29
9.0	.43	.34	.29	.42	.34	.29	.41	.33	.28	.40	.33	.28	.38	.32	.28	.26
10.0	.39	.31	.26	.39	.31	.26	.38	.31	.26	.37	.30	.26	.36	.30	.25	.24



C Range: 0 - 360DEG
 C Interval: 30.0DEG
 Test Speed: HIGH
 Temperature:25.3DEG
 Operators:
 Test Date:2024-03-04

γ Range: 0 - 180DEG
 γ Interval: 1.0DEG
 Test System:EVERFINE GO-2000A_V1 SYSTEM V2.0.354
 Humidity:65.0%
 Test Distance:11.227m [K=1.1463]
 Remarks:

WEC AND CCEC

Test:U:12.00V I:1.885A P:22.62W PF:1.000 Freq:49.97Hz Lamp Flux:2704.67x1 lm									
NAME: 7156 2835 240LED/M 2700K IRC90 12V					TYPE:			WEIGHT:	
SPEC.:					DIM.:			SERIAL No.:	
MFR.:					SUR.:			Shielding Angle:	

ρcc	80%			70%			50%			30%			10%			0
ρw	50%	30%	10%	50%	30%	10%	50%	30%	10%	50%	30%	10%	50%	30%	10%	0
ρfc	20%			20%			20%			20%			20%			0
RCR	RCR:Room Cavity Ratio						Wall Exitance Coefficients (WEC)									
0.0																
1.0	.308	.175	.056	.301	.172	.055	.287	.165	.053	.274	.158	.051	.263	.152	.049	
2.0	.291	.159	.049	.284	.157	.048	.272	.151	.047	.261	.146	.046	.250	.142	.045	
3.0	.270	.144	.043	.264	.141	.043	.253	.137	.042	.243	.133	.041	.234	.129	.040	
4.0	.249	.129	.038	.244	.128	.038	.234	.124	.037	.225	.121	.036	.217	.118	.036	
5.0	.230	.117	.034	.226	.116	.034	.217	.113	.033	.209	.110	.033	.202	.108	.032	
6.0	.214	.107	.031	.210	.106	.030	.202	.103	.030	.195	.101	.030	.188	.099	.029	
7.0	.199	.098	.028	.195	.097	.028	.188	.095	.027	.182	.093	.027	.176	.091	.027	
8.0	.186	.091	.026	.182	.090	.025	.176	.088	.025	.170	.086	.025	.165	.085	.025	
9.0	.174	.084	.024	.171	.083	.023	.166	.082	.023	.160	.080	.023	.155	.079	.023	
10.0	.164	.078	.022	.161	.078	.022	.156	.076	.022	.151	.075	.021	.147	.074	.021	

ρcc	80%			70%			50%			30%			10%			0
ρw	50%	30%	10%	50%	30%	10%	50%	30%	10%	50%	30%	10%	50%	30%	10%	0
ρfc	20%			20%			20%			20%			20%			0
RCR	RCR:Room Cavity Ratio						Ceiling Cavity Exitance Coefficients (CCEC)									
0.0	.199	.199	.199	.170	.170	.170	.116	.116	.116	.067	.067	.067	.021	.021	.021	
1.0	.189	.164	.143	.161	.141	.123	.110	.097	.085	.064	.056	.049	.020	.018	.016	
2.0	.180	.140	.106	.155	.121	.092	.106	.084	.064	.061	.049	.038	.020	.016	.012	
3.0	.173	.123	.083	.148	.106	.072	.102	.074	.050	.059	.043	.030	.019	.014	.010	
4.0	.165	.109	.067	.142	.095	.058	.098	.066	.041	.056	.039	.024	.018	.013	.008	
5.0	.158	.099	.056	.136	.086	.048	.093	.060	.034	.054	.035	.020	.017	.011	.007	
6.0	.151	.091	.048	.130	.079	.041	.089	.055	.029	.052	.032	.017	.017	.011	.006	
7.0	.144	.084	.042	.124	.073	.036	.086	.051	.026	.050	.030	.015	.016	.010	.005	
8.0	.138	.078	.037	.118	.068	.032	.082	.048	.023	.048	.028	.014	.015	.009	.005	
9.0	.131	.073	.034	.113	.063	.029	.078	.045	.021	.046	.026	.012	.015	.009	.004	
10.0	.126	.069	.031	.108	.060	.027	.075	.042	.019	.044	.025	.011	.014	.008	.004	

C Range: 0 - 360DEG
 C Interval: 30.0DEG
 Test Speed: HIGH
 Temperature:25.3DEG
 Operators:
 Test Date:2024-03-04

γ Range: 0 - 180DEG
 γ Interval: 1.0DEG
 Test System:EVERFINE GO-2000A_V1 SYSTEM V2.0.354
 Humidity:65.0%
 Test Distance:11.227m [K=1.1463]
 Remarks:

UGR(Unified Glare Rating) Table

Test:U:12.00V I:1.885A P:22.62W PF:1.000 Freq:49.97Hz Lamp Flux:2704.67x1 lm										
NAME: 7156 2835 240LED/M 2700K IRC90 12V					TYPE:			WEIGHT:		
SPEC.:					DIM.:			SERIAL No.:		
MFR.:					SUR.:			Shielding Angle:		
ceiling/cavity	0.7	0.7	0.5	0.5	0.3	0.7	0.7	0.5	0.5	0.3
walls	0.5	0.3	0.5	0.3	0.3	0.5	0.3	0.5	0.3	0.3
working plane	0.2	0.2	0.2	0.2	0.2	0.2	0.2	0.2	0.2	0.2
Room dimensions	Viewed crosswise					Viewed endwise				
x = 2H y = 2H	25.4	26.9	25.7	27.1	27.4	25.0	26.5	25.3	26.7	26.9
3H	27.1	28.5	27.4	28.7	29.0	26.4	27.8	26.7	28.1	28.3
4H	27.8	29.1	28.1	29.4	29.7	26.9	28.3	27.3	28.5	28.8
6H	28.3	29.6	28.7	29.9	30.2	27.3	28.5	27.6	28.8	29.1
8H	28.5	29.7	28.9	30.0	30.3	27.3	28.5	27.7	28.8	29.2
12H	28.7	29.8	29.0	30.1	30.5	27.4	28.5	27.7	28.8	29.2
4H 2H	26.0	27.3	26.3	27.6	27.9	25.7	27.0	26.0	27.3	27.5
3H	27.9	29.0	28.2	29.3	29.7	27.3	28.5	27.7	28.8	29.1
4H	28.7	29.8	29.1	30.1	30.5	28.0	29.0	28.3	29.4	29.7
6H	29.4	30.3	29.8	30.7	31.1	28.4	29.3	28.8	29.7	30.1
8H	29.6	30.5	30.1	30.9	31.3	28.5	29.4	29.0	29.8	30.2
12H	29.8	30.6	30.3	31.0	31.5	28.6	29.4	29.0	29.8	30.2
8H 4H	29.0	29.8	29.4	30.2	30.6	28.3	29.2	28.7	29.6	30.0
6H	29.8	30.5	30.3	31.0	31.4	28.9	29.6	29.4	30.0	30.5
8H	30.2	30.8	30.6	31.2	31.7	29.1	29.7	29.6	30.2	30.7
12H	30.5	31.0	30.9	31.5	32.0	29.2	29.8	29.7	30.2	30.7
12H 4H	29.0	29.8	29.4	30.2	30.6	28.3	29.1	28.8	29.5	30.0
6H	29.9	30.5	30.3	30.9	31.4	29.0	29.6	29.5	30.1	30.5
8H	30.2	30.8	30.7	31.3	31.8	29.2	29.8	29.7	30.3	30.8
Variations with the observer position at spacings:										
S = 1.0H	+ 0.1 / - 0.2					+ 0.2 / - 0.2				
1.5H	+ 0.2 / - 0.3					+ 0.2 / - 0.4				
2.0H	+ 0.1 / - 0.3					+ 0.2 / - 0.4				

CIE Pub.117, 2705 lm Total Lamp Luminous Flux Correct (8log(F/F0) = 3.5)

C Range: 0 - 360DEG
 C Interval: 30.0DEG
 Test Speed: HIGH
 Temperature:25.3DEG
 Operators:
 Test Date:2024-03-04

γ Range: 0 - 180DEG
 γ Interval: 1.0DEG
 Test System:EVERFINE GO-2000A_V1 SYSTEM V2.0.354
 Humidity:65.0%
 Test Distance:11.227m [K=1.1463]
 Remarks:

UTILIZATION FACTORS TABLE

Test:U:12.00V I:1.885A P:22.62W PF:1.000 Freq:49.97Hz Lamp Flux:2704.67x1 lm		
NAME: 7156 2835 240LED/M 2700K IRC90 12V	TYPE:	WEIGHT:
SPEC.:	DIM.:	SERIAL No.:
MFR.:	SUR.:	Shielding Angle:

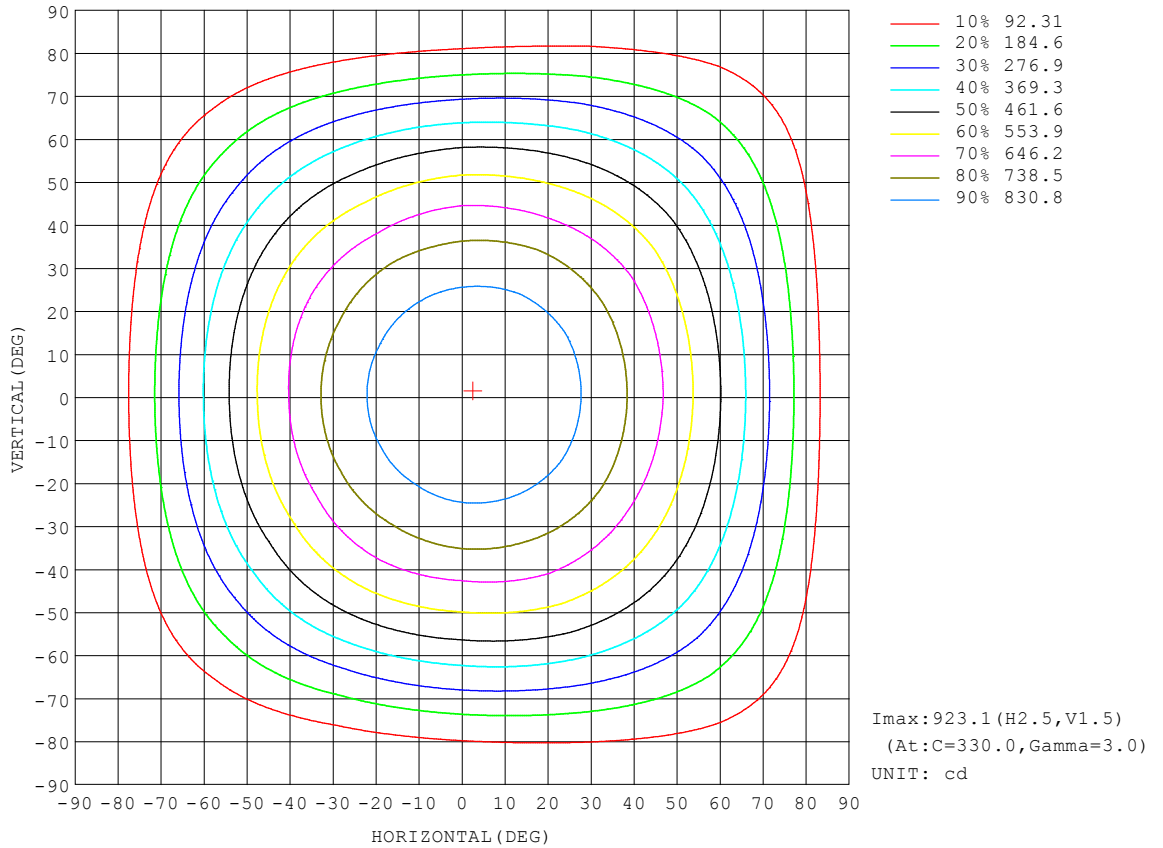
REFLECTANCE										
Ceiling	0.8	0.8	0.8	0.7	0.7	0.7	0.5	0.5	0.5	0
Walls	0.7	0.5	0.3	0.7	0.5	0.3	0.7	0.5	0.3	0
Working plane	0.2	0.2	0.2	0.2	0.2	0.2	0.2	0.2	0.2	0
ROOM INDEX	UTILIZATION FACTORS (PERCENT) $k(RI) \times RCR = 5$									
k = 0.60	57	45	38	56	45	38	55	45	38	32
0.80	67	55	48	66	55	48	64	54	47	40
1.00	76	64	57	74	64	57	72	65	56	49
1.25	83	72	65	81	71	64	78	70	64	56
1.50	88	78	71	86	77	70	83	75	69	61
2.00	95	86	80	93	85	79	89	82	77	69
2.50	99	91	85	96	89	84	92	86	82	73
3.00	102	95	89	100	93	88	95	90	86	77
4.00	106	100	96	103	98	94	99	95	91	82
5.00	108	104	99	106	102	98	101	98	95	85
ROOM INDEX	UF(total)									Direct
According to DIN EN 13032-2 2004			Suspended				SHRNOM = 1.25			

C Range: 0 - 360DEG
 C Interval: 30.0DEG
 Test Speed: HIGH
 Temperature:25.3DEG
 Operators:
 Test Date:2024-03-04

γ Range: 0 - 180DEG
 γ Interval: 1.0DEG
 Test System:EVERFINE GO-2000A_V1 SYSTEM V2.0.354
 Humidity:65.0%
 Test Distance:11.227m [K=1.1463]
 Remarks:

ISOCANDELA DIAGRAM

Test:U:12.00V I:1.885A P:22.62W PF:1.000 Freq:49.97Hz Lamp Flux:2704.67x1 lm		
NAME: 7156 2835 240LED/M 2700K IRC90 12V	TYPE:	WEIGHT:
SPEC.:	DIM.:	SERIAL No.:
MFR.:	SUR.:	Shielding Angle:

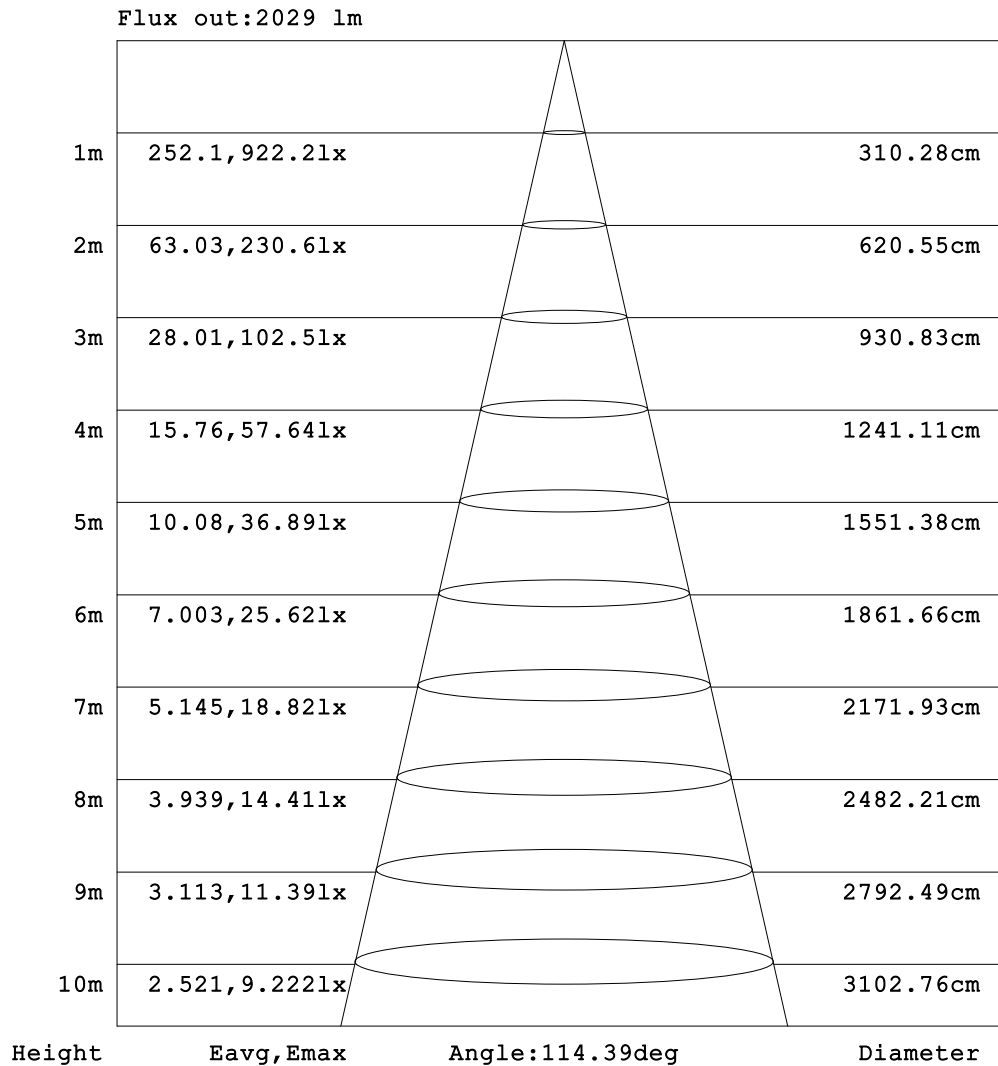


C Range: 0 - 360DEG
 C Interval: 30.0DEG
 Test Speed: HIGH
 Temperature: 25.3DEG
 Operators:
 Test Date: 2024-03-04

γ Range: 0 - 180DEG
 γ Interval: 1.0DEG
 Test System: EVERFINE GO-2000A_V1 SYSTEM V2.0.354
 Humidity: 65.0%
 Test Distance: 11.227m [K=1.1463]
 Remarks:

AAI Figure

Test:U:12.00V I:1.885A P:22.62W PF:1.000 Freq:49.97Hz Lamp Flux:2704.67x1 lm		
NAME: 7156 2835 240LED/M 2700K IRC90 12V	TYPE:	WEIGHT:
SPEC.:	DIM.:	SERIAL No.:
MFR.:	SUR.:	Shielding Angle:



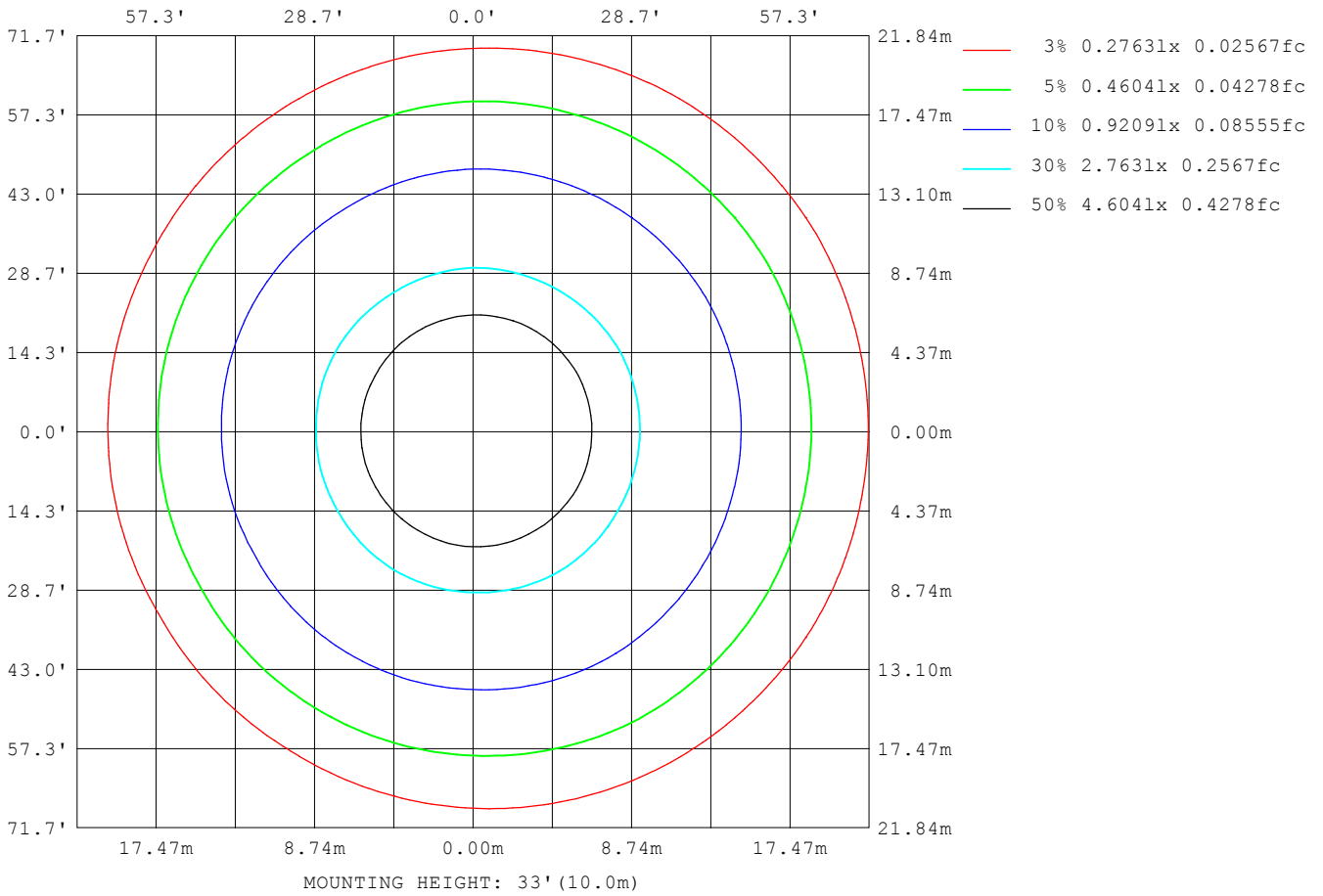
Note:The Curves indicate the illuminated area and the average illumination when the luminaire is at different distance.

C Range: 0 - 360DEG
 C Interval: 30.0DEG
 Test Speed: HIGH
 Temperature:25.3DEG
 Operators:
 Test Date:2024-03-04

γ Range: 0 - 180DEG
 γ Interval: 1.0DEG
 Test System:EVERFINE GO-2000A_V1 SYSTEM V2.0.354
 Humidity:65.0%
 Test Distance:11.227m [K=1.1463]
 Remarks:

ISOLUX DIAGRAM

Test:U:12.00V I:1.885A P:22.62W PF:1.000 Freq:49.97Hz Lamp Flux:2704.67x1 lm		
NAME: 7156 2835 240LED/M 2700K IRC90 12V	TYPE:	WEIGHT:
SPEC.:	DIM.:	SERIAL No.:
MFR.:	SUR.:	Shielding Angle:



C Range: 0 - 360DEG
 C Interval: 30.0DEG
 Test Speed: HIGH
 Temperature:25.3DEG
 Operators:
 Test Date:2024-03-04

γ Range: 0 - 180DEG
 γ Interval: 1.0DEG
 Test System:EVERFINE GO-2000A_V1 SYSTEM V2.0.354
 Humidity:65.0%
 Test Distance:11.227m [K=1.1463]
 Remarks:

LED Avg.L Report

Test:U:12.00V I:1.885A P:22.62W PF:1.000 Freq:49.97Hz Lamp Flux:2704.67x1 lm		
NAME: 7156 2835 240LED/M 2700K IRC90 12V	TYPE:	WEIGHT:
SPEC.:	DIM.:	SERIAL No.:
MFR.:	SUR.:	Shielding Angle:

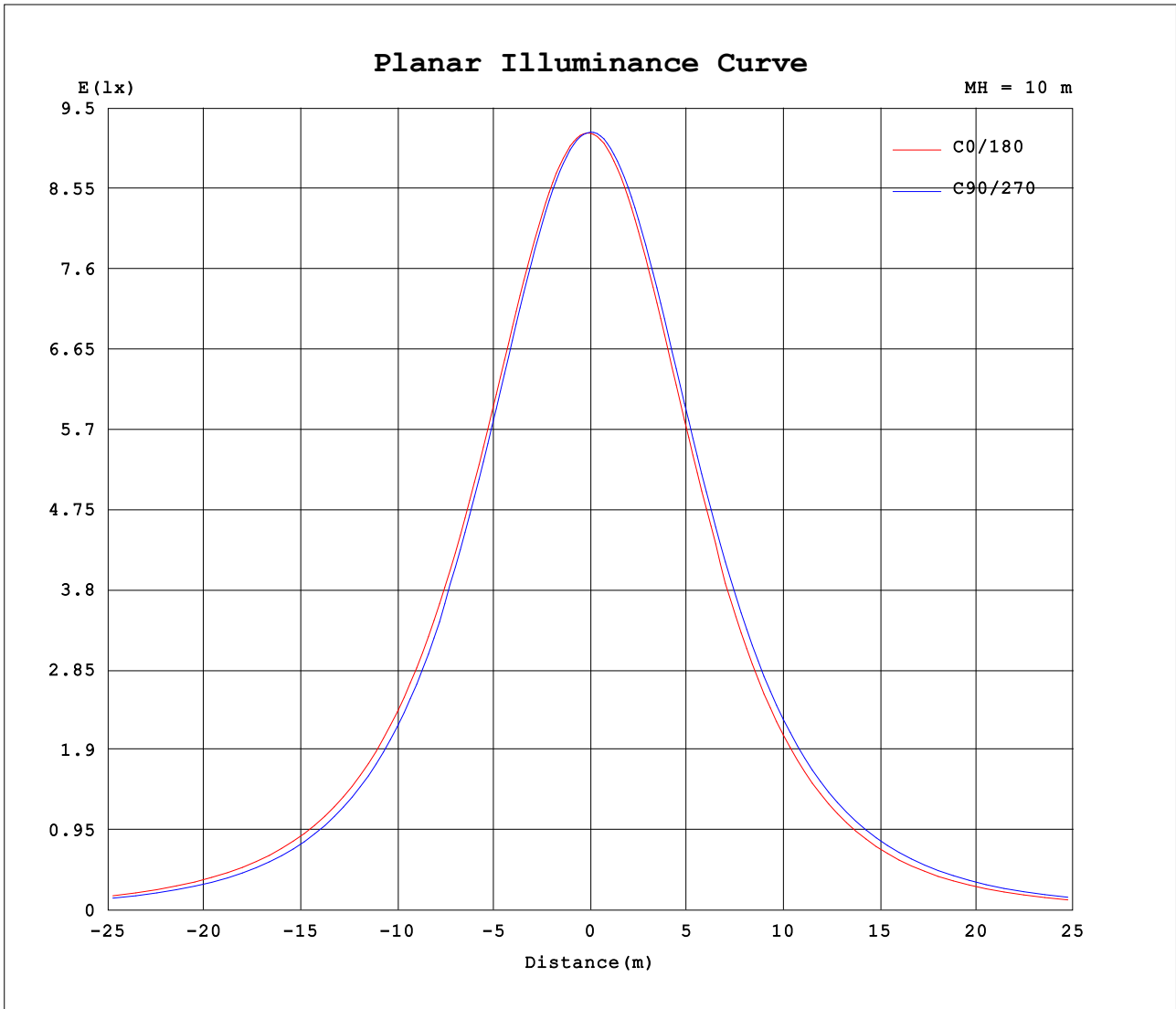
AvgL	cd/m2
L_0~180 (65) av	80271
L_0~180 (75) av	67486
L_0~180 (85) av	46197
L_90~270 (65) av	79653
L_90~270 (75) av	67105
L_90~270 (85) av	40064
L_45 (65) av	79755
L_45 (75) av	67067
L_45 (85) av	45199

Standard: GB/T 29293-2012

C Range: 0 - 360DEG
 C Interval: 30.0DEG
 Test Speed: HIGH
 Temperature:25.3DEG
 Operators:
 Test Date:2024-03-04

γ Range: 0 - 180DEG
 γ Interval: 1.0DEG
 Test System:EVERFINE GO-2000A_V1 SYSTEM V2.0.354
 Humidity:65.0%
 Test Distance:11.227m [K=1.1463]
 Remarks:

Planar Illuminance Curve



C Range: 0 - 360DEG
 C Interval: 30.0DEG
 Test Speed: HIGH
 Temperature: 25.3DEG
 Operators:
 Test Date: 2024-03-04

γ Range: 0 - 180DEG
 γ Interval: 1.0DEG
 Test System: EVERFINE GO-2000A_V1 SYSTEM V2.0.354
 Humidity: 65.0%
 Test Distance: 11.227m [K=1.1463]
 Remarks:

LUMINOUS DISTRIBUTION INTENSITY DATA

Test:U:12.00V I:1.885A P:22.62W PF:1.000 Freq:49.97Hz Lamp Flux:2704.67x1 lm		
NAME: 7156 2835 240LED/M 2700K IRC90 12V	TYPE:	WEIGHT:
SPEC.:	DIM.:	SERIAL No.:
MFR.:	SUR.:	Shielding Angle:

Table--1

UNIT: cd

C (DEG) \ γ (DEG)	0	30	60	90	120	150	180	210	240	270	300	330							
0	921	921	922	922	922	922	921	921	922	922	922	922							
5	921	921	919	918	915	914	913	914	917	919	922	923							
10	915	913	910	906	901	898	898	899	904	909	914	916							
15	900	898	893	887	879	876	875	877	884	892	899	902							
20	878	876	868	860	850	845	845	848	858	867	877	880							
25	849	846	837	827	814	808	809	812	824	835	847	852							
30	813	810	799	787	772	764	766	769	784	796	810	816							
35	771	767	754	740	722	703	705	720	737	751	767	774							
40	722	713	703	676	667	647	650	664	672	699	713	725							
45	666	652	645	617	604	585	588	602	612	641	652	669							
50	603	591	581	552	536	517	521	535	547	577	590	609							
55	536	524	512	482	464	444	448	463	478	507	523	541							
60	464	452	437	406	385	367	372	385	403	432	451	467							
65	387	375	353	327	299	285	291	299	323	347	374	390							
70	302	295	271	245	216	203	209	217	239	265	292	304							
75	220	213	189	164	135	123	129	137	160	184	210	223							
80	140	133	112	89.5	66.6	55.4	59.3	66.9	86.5	107	131	142							
85	68.6	63.8	47.5	28.7	14.9	9.99	11.9	15.7	27.5	41.2	62.4	71.7							
90	16.4	14.4	6.88	1.70	1.72	1.66	1.76	2.01	2.62	2.08	12.9	18.1							
95	2.08	1.72	1.65	1.70	1.79	1.88	2.16	2.16	2.10	1.99	1.92	2.53							
100	1.89	1.98	1.98	2.21	2.28	2.24	2.57	2.60	2.61	2.47	2.23	2.11							
105	2.15	2.24	2.47	2.73	2.79	2.72	3.14	3.17	3.24	3.01	2.74	2.54							
110	2.60	2.72	3.03	3.28	3.32	3.27	3.69	3.72	3.72	3.60	3.30	3.05							
115	3.17	3.21	3.48	3.84	3.82	3.79	4.26	4.30	4.25	4.20	3.86	3.60							
120	3.63	3.73	3.99	4.39	4.36	4.31	4.85	4.91	4.83	4.76	4.43	4.13							
125	4.17	4.24	4.52	4.92	4.85	4.88	5.36	5.37	5.31	5.29	4.93	4.75							
130	4.74	4.79	5.07	5.44	5.34	5.39	5.83	5.82	5.75	5.77	5.43	5.21							
135	5.27	5.30	5.53	5.89	5.85	5.85	6.28	6.24	6.19	6.24	5.88	5.70							
140	5.71	5.77	5.97	6.34	6.28	6.31	6.70	6.64	6.59	6.60	6.27	6.11							
145	6.20	6.25	6.42	6.72	6.70	6.70	7.01	7.00	6.95	6.98	6.66	6.55							
150	6.64	6.70	6.79	7.09	7.10	7.08	7.30	7.28	7.29	7.28	7.02	6.94							
155	7.00	7.11	7.17	7.43	7.46	7.43	7.61	7.59	7.60	7.59	7.35	7.32							
160	7.38	7.48	7.51	7.80	7.79	7.75	7.91	7.81	7.88	7.86	7.62	7.65							
165	7.81	7.85	7.84	8.13	8.11	8.06	8.19	8.13	8.18	8.19	7.97	7.95							
170	8.23	8.16	8.20	8.44	8.39	8.32	8.49	8.33	8.44	8.49	8.24	8.26							
175	8.58	8.45	8.51	8.66	8.62	8.61	8.74	8.57	8.62	8.67	8.52	8.52							
180	8.85	8.68	8.68	8.80	8.71	8.75	8.87	8.68	8.69	8.79	8.70	8.70							

C Range: 0 - 360DEG
 C Interval: 30.0DEG
 Test Speed: HIGH
 Temperature:25.3DEG
 Operators:
 Test Date:2024-03-04

γ Range: 0 - 180DEG
 γ Interval: 1.0DEG
 Test System:EVERFINE GO-2000A_V1 SYSTEM V2.0.354
 Humidity:65.0%
 Test Distance:11.227m [K=1.1463]
 Remarks:

Photometric Data Table [cd]

G/C	0.0	30.0	60.0	90.0	120.0	150.0	180.0	210.0	240.0	270.0
0.0	920.9	920.6	921.5	922.0	921.8	921.8	920.9	920.6	921.5	922.0
3.0	922.0	921.4	921.0	920.3	918.7	917.6	917.0	917.3	919.2	921.4
6.0	920.4	919.6	917.9	916.0	912.8	911.2	910.7	911.1	914.4	917.8
9.0	916.0	915.1	912.5	908.8	904.2	901.8	901.8	902.4	907.2	911.8
12.0	909.2	908.0	904.0	899.0	892.9	889.9	889.9	891.1	897.3	903.0
15.0	899.6	898.0	892.5	886.5	879.2	876.1	875.5	877.2	884.3	891.9
18.0	887.4	885.3	878.8	871.6	862.6	858.0	858.2	860.7	869.3	877.9
21.0	872.8	870.2	862.8	854.2	843.2	838.5	838.5	841.2	851.3	861.3
24.0	855.4	853.0	843.6	834.0	821.8	816.0	816.5	819.7	830.6	841.9
27.0	835.3	832.3	822.3	811.2	797.7	791.2	792.1	795.7	808.3	820.5
30.0	813.0	809.8	798.6	786.6	771.6	764.4	765.6	769.4	783.7	796.4
33.0	788.4	785.4	772.8	759.5	742.8	735.5	736.7	740.5	755.2	770.2
36.0	761.2	758.1	744.0	730.4	711.1	692.6	694.5	709.4	720.4	741.5
39.0	732.1	730.5	713.3	687.5	677.9	659.1	661.3	675.7	683.3	710.0
42.0	700.2	685.8	679.9	653.5	642.2	623.3	625.7	640.2	648.6	676.2
45.0	666.3	652.0	644.9	617.4	604.4	585.3	588.5	602.5	612.5	640.6
48.0	629.2	616.0	607.8	579.4	564.2	545.4	548.9	563.2	574.9	602.8
51.0	590.4	577.8	567.8	538.8	522.3	503.3	506.9	521.1	534.6	562.8
54.0	550.1	537.7	526.2	496.3	478.7	459.3	463.8	477.5	491.3	520.9
57.0	508.5	495.9	482.8	452.3	432.7	413.9	418.4	431.8	448.2	477.1
60.0	464.2	452.0	437.1	406.2	385.1	366.7	371.6	385.0	403.0	431.6
63.0	418.7	406.2	390.6	358.6	331.3	317.9	323.4	331.4	354.9	384.5
66.0	368.6	359.5	336.4	310.3	282.0	268.9	274.3	282.5	307.3	330.6
69.0	317.8	311.2	287.6	261.0	232.2	219.2	225.1	233.1	256.8	281.6
72.0	268.7	261.8	237.9	211.6	182.4	170.0	176.2	184.3	208.0	232.4
75.0	219.9	212.6	189.0	163.8	135.5	123.3	129.5	137.0	159.5	183.5
78.0	171.5	164.5	142.0	118.6	92.65	80.82	85.73	93.20	113.8	136.7
81.0	124.7	118.4	98.17	76.24	54.10	43.93	46.90	54.70	73.01	92.69
84.0	81.96	76.78	59.37	39.27	22.63	16.46	18.37	23.47	37.61	52.87
87.0	43.93	40.96	26.62	12.89	5.044	3.054	3.914	5.735	11.82	21.01
90.0	16.42	14.42	6.880	1.696	1.725	1.662	1.758	2.009	2.619	2.081
93.0	4.443	3.433	2.060	1.544	1.733	1.770	1.996	2.030	1.983	1.851
96.0	1.749	1.688	1.674	1.806	1.875	1.924	2.245	2.243	2.209	2.053
99.0	1.733	1.959	1.887	2.102	2.136	2.161	2.459	2.481	2.518	2.374
102.0	1.947	1.995	2.160	2.411	2.445	2.435	2.780	2.801	2.839	2.659
105.0	2.148	2.244	2.468	2.732	2.789	2.720	3.136	3.169	3.242	3.015
108.0	2.421	2.506	2.800	3.053	3.074	3.029	3.468	3.478	3.528	3.406
111.0	2.706	2.826	3.074	3.396	3.418	3.385	3.812	3.822	3.824	3.715
114.0	3.015	3.111	3.394	3.717	3.739	3.693	4.157	4.155	4.145	4.095
117.0	3.335	3.432	3.668	4.073	4.012	3.990	4.513	4.511	4.489	4.427
120.0	3.632	3.729	3.988	4.394	4.356	4.311	4.845	4.914	4.833	4.760
123.0	3.952	4.038	4.321	4.703	4.665	4.655	5.154	5.140	5.130	5.104
126.0	4.320	4.370	4.641	5.011	4.950	4.976	5.463	5.496	5.403	5.378
129.0	4.605	4.679	4.926	5.344	5.247	5.296	5.759	5.710	5.676	5.686
132.0	4.926	4.987	5.270	5.617	5.544	5.581	6.067	5.960	5.961	5.971
135.0	5.270	5.296	5.532	5.890	5.852	5.854	6.282	6.244	6.186	6.244
138.0	5.508	5.593	5.828	6.163	6.113	6.115	6.543	6.470	6.413	6.434
141.0	5.816	5.878	6.054	6.412	6.386	6.400	6.744	6.696	6.661	6.672
144.0	6.066	6.174	6.304	6.637	6.612	6.625	6.946	6.886	6.863	6.897
147.0	6.362	6.424	6.576	6.863	6.861	6.851	7.148	7.076	7.077	7.087
150.0	6.636	6.697	6.790	7.089	7.099	7.077	7.303	7.277	7.291	7.277
153.0	6.802	6.946	6.992	7.302	7.324	7.314	7.492	7.444	7.492	7.444
156.0	7.064	7.184	7.195	7.492	7.526	7.504	7.658	7.622	7.658	7.622
159.0	7.336	7.409	7.408	7.718	7.752	7.694	7.849	7.788	7.836	7.812
162.0	7.597	7.635	7.598	7.931	7.930	7.860	8.027	7.942	8.015	7.990
165.0	7.811	7.848	7.835	8.134	8.108	8.062	8.193	8.132	8.181	8.192
168.0	8.108	8.026	8.096	8.323	8.298	8.228	8.359	8.204	8.347	8.346
171.0	8.333	8.216	8.310	8.513	8.464	8.383	8.561	8.358	8.489	8.513
174.0	8.560	8.395	8.417	8.620	8.583	8.537	8.715	8.548	8.608	8.596
177.0	8.726	8.549	8.583	8.727	8.679	8.667	8.822	8.607	8.667	8.714
180.0	8.845	8.679	8.679	8.798	8.715	8.750	8.869	8.679	8.691	8.786
G/C	300.0	330.0								
0.0	921.8	921.8								
3.0	922.7	923.2								
6.0	920.7	921.9								
9.0	916.1	917.9								
12.0	908.9	911.3								
15.0	899.0	901.9								
18.0	886.5	890.0								
21.0	871.2	875.3								
24.0	853.4	858.2								
27.0	832.9	838.2								
30.0	810.3	816.1								

C Range: 0 - 360DEG
 C Interval: 30.0DEG
 Test Speed: HIGH
 Temperature: 25.3DEG
 Operators:
 Test Date: 2024-03-04

γ Range: 0 - 180DEG
 γ Interval: 1.0DEG
 Test System: EVERFINE GO-2000A_V1 SYSTEM V2.0.354
 Humidity: 65.0%
 Test Distance: 11.227m [K=1.1463]
 Remarks:

Photometric Data Table [cd]

33.0	785.7	791.5
36.0	758.4	764.5
39.0	729.4	735.4
42.0	685.6	703.3
45.0	651.8	669.5
48.0	615.8	633.7
51.0	577.5	596.3
54.0	537.4	555.2
57.0	494.9	510.6
60.0	450.9	467.2
63.0	405.1	422.0
66.0	357.8	371.2
69.0	309.4	320.5
72.0	258.9	271.6
75.0	209.8	222.5
78.0	161.3	173.6
81.0	115.7	127.3
84.0	75.15	84.64
87.0	39.27	47.31
90.0	12.89	18.08
93.0	2.699	5.007
96.0	1.924	2.152
99.0	2.150	2.089
102.0	2.435	2.267
105.0	2.744	2.540
108.0	3.088	2.849
111.0	3.420	3.204
114.0	3.753	3.502
117.0	4.073	3.811
120.0	4.430	4.131
123.0	4.726	4.522
126.0	5.023	4.796
129.0	5.320	5.104
132.0	5.605	5.413
135.0	5.878	5.698
138.0	6.115	5.983
141.0	6.353	6.220
144.0	6.578	6.494
147.0	6.792	6.684
150.0	7.017	6.945
153.0	7.219	7.206
156.0	7.409	7.384
159.0	7.575	7.586
162.0	7.765	7.788
165.0	7.967	7.954
168.0	8.122	8.144
171.0	8.300	8.334
174.0	8.501	8.500
177.0	8.608	8.607
180.0	8.703	8.703

C Range: 0 - 360DEG
 C Interval: 30.0DEG
 Test Speed: HIGH
 Temperature:25.3DEG
 Operators:
 Test Date:2024-03-04

γ Range: 0 - 180DEG
 γ Interval: 1.0DEG
 Test System:EVERFINE GO-2000A_V1 SYSTEM V2.0.354
 Humidity:65.0%
 Test Distance:11.227m [K=1.1463]
 Remarks: