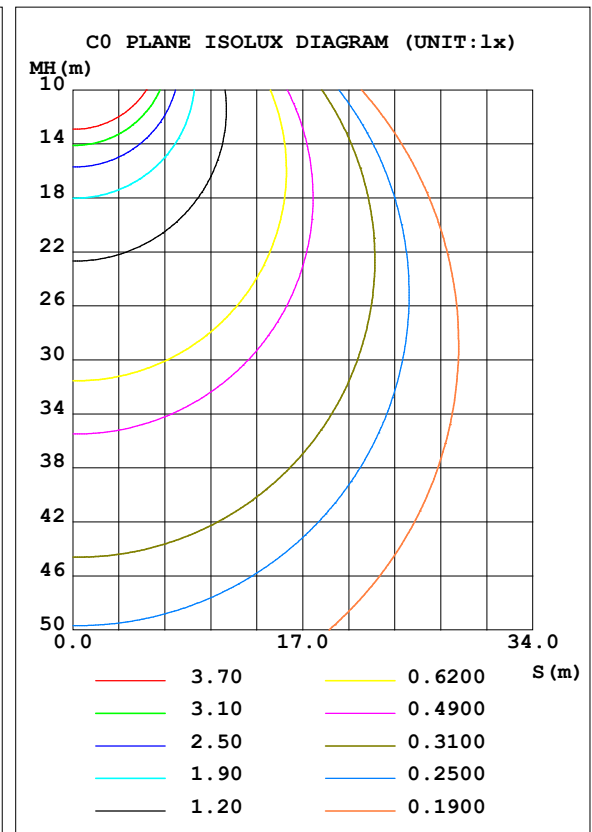
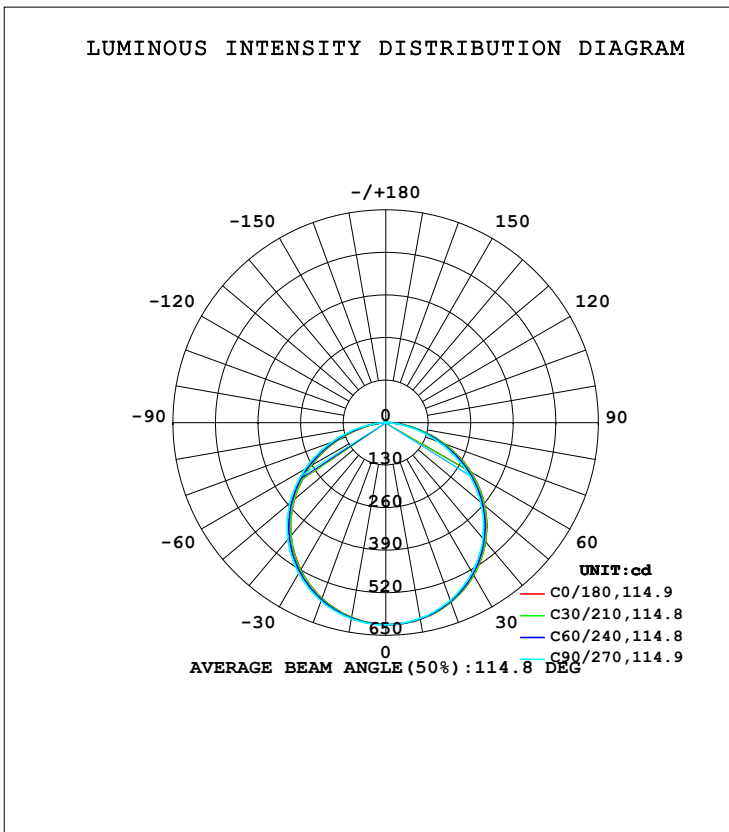


LUMINAIRE PHOTOMETRIC TEST REPORT

Test:U:12.00V I:1.245A P:14.94W PF:1.000 Freq:50.01Hz Lamp Flux:1821.44x1 lm		
NAME: 7153 2835 156LED/M 2700K IRC90 12V	TYPE:	WEIGHT:
SPEC.:	DIM.:	SERIAL No.:
MFR.:	SUR.:	Shielding Angle:

DATA OF LAMP		PHOTOMETRIC DATA Eff: 121.92 lm/W			
MODEL		I <sub>max</sub> (cd)	618.4	S/MH (C0/180)	1.25
NOMINAL POWER (W)		LOR (%)	100.0	S/MH (C90/270)	1.28
RATED VOLTAGE (V)	12	TOTAL FLUX (lm)	1821.4	η UP, DN (C0-180)	0.5, 49.5
NOMINAL FLUX (lm)	1821.44	CIE CLASS	DIRECT	η UP, DN (C180-360)	0.6, 49.4
LAMPS INSIDE	1	η up (%)	1.1	CIBSE SHR NOM	1.25
TEST VOLTAGE (V)	12	η down (%)	98.9	CIBSE SHR MAX	1.35



C Range: 0 - 360DEG  
 C Interval: 30.0DEG  
 Test Speed: HIGH  
 Temperature: 25.3DEG  
 Operators:  
 Test Date: 2024-03-04

γ Range: 0 - 180DEG  
 γ Interval: 1.0DEG  
 Test System: EVERFINE GO-2000A\_V1 SYSTEM V2.0.354  
 Humidity: 65.0%  
 Test Distance: 11.227m [K=1.1481]  
 Remarks:

ZONAL FLUX DIAGRAM

ZONAL FLUX DIAGRAM:

γ	C0	C45	C90	C135	C180	C225	C270	C315	γ	Φ zone	Φ total	%lum, lamp
10	610.1	609.1	607.3	605.0	603.7	605.2	608.3	611.4	0- 10	58.47	58.47	3.21,3.21
20	583.6	581.5	577.3	572.3	571.0	573.7	579.5	584.9	10- 20	168.0	226.5	12.4,12.4
30	538.1	535.0	528.4	520.8	519.4	523.3	531.6	539.4	20- 30	256.3	482.8	26.5,26.5
40	474.9	470.5	461.6	451.5	450.1	455.2	465.7	476.2	30- 40	311.9	794.7	43.6,43.6
50	395.0	389.3	377.9	365.4	364.6	370.3	383.1	395.9	40- 50	326.7	1121	61.6,61.6
60	299.9	292.9	278.9	264.9	264.2	270.9	286.5	299.5	50- 60	297.3	1419	77.9,77.9
70	191.4	185.0	169.9	154.4	153.9	161.0	175.8	192.4	60- 70	225.8	1644	90.3,90.3
80	82.95	77.67	64.89	51.72	49.71	57.66	68.91	84.52	70- 80	125.4	1770	97.2,97.2
90	5.187	5.811	1.129	3.005	1.535	2.188	1.247	8.100	80- 90	31.66	1802	98.9,98.9
100	1.298	1.310	1.465	1.865	1.668	1.715	1.702	1.572	90-100	2.018	1804	99,99
110	1.870	1.988	2.192	2.203	2.430	2.465	2.489	2.287	100-110	2.001	1806	99.1,99.1
120	2.642	2.656	2.930	2.865	3.192	3.210	3.227	3.037	110-120	2.576	1808	99.3,99.3
130	3.286	3.376	3.645	3.573	3.860	3.865	3.894	3.698	120-130	2.964	1811	99.4,99.4
140	3.976	4.020	4.252	4.216	4.502	4.490	4.513	4.299	130-140	3.060	1814	99.6,99.6
150	4.585	4.639	4.836	4.794	4.943	4.943	4.942	4.823	140-150	2.852	1817	99.8,99.8
160	5.120	5.133	5.336	5.312	5.407	5.371	5.359	5.240	150-160	2.327	1819	99.9,99.9
170	5.680	5.621	5.729	5.693	5.765	5.711	5.728	5.627	160-170	1.547	1821	100,100
180	6.026	5.919	5.991	5.943	6.050	5.919	6.002	5.925	170-180	0.5536	1821	100,100
DEG	LUMINOUS INTENSITY:cd									UNIT:lm		

Conical surface Flux(90deg): 958.97 lm

%lum = 52.6%

%lamp = 52.6%

Conical surface Flux(120deg): 1418.7 lm

%lum = 77.9%

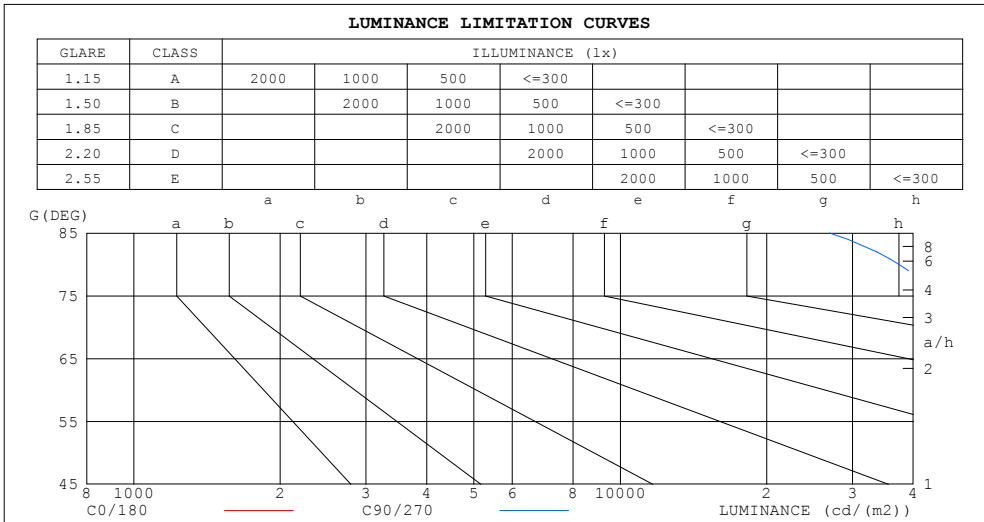
%lamp = 77.9%

C Range: 0 - 360DEG  
 C Interval: 30.0DEG  
 Test Speed: HIGH  
 Temperature:25.3DEG  
 Operators:  
 Test Date:2024-03-04

γ Range: 0 - 180DEG  
 γ Interval: 1.0DEG  
 Test System:EVERFINE GO-2000A\_V1 SYSTEM V2.0.354  
 Humidity:65.0%  
 Test Distance:11.227m [K=1.1481]  
 Remarks:

**LUMINANCE LIMITATION CURVES**

Test:U:12.00V I:1.245A P:14.94W PF:1.000 Freq:50.01Hz Lamp Flux:1821.44x1 lm		
NAME: 7153 2835 156LED/M 2700K IRC90 12V	TYPE:	WEIGHT:
SPEC.:	DIM.:	SERIAL No.:
MFR.:	SUR.:	Shielding Angle:



LUMINANCE cd/(m2)		
G (DEG)	C0/180	C90/270
85	41825	26922
80	47770	37368
75	52825	44582
70	55956	49665
65	58571	53264
60	59980	55789
55	60850	57566
50	61446	58789
45	61775	59662

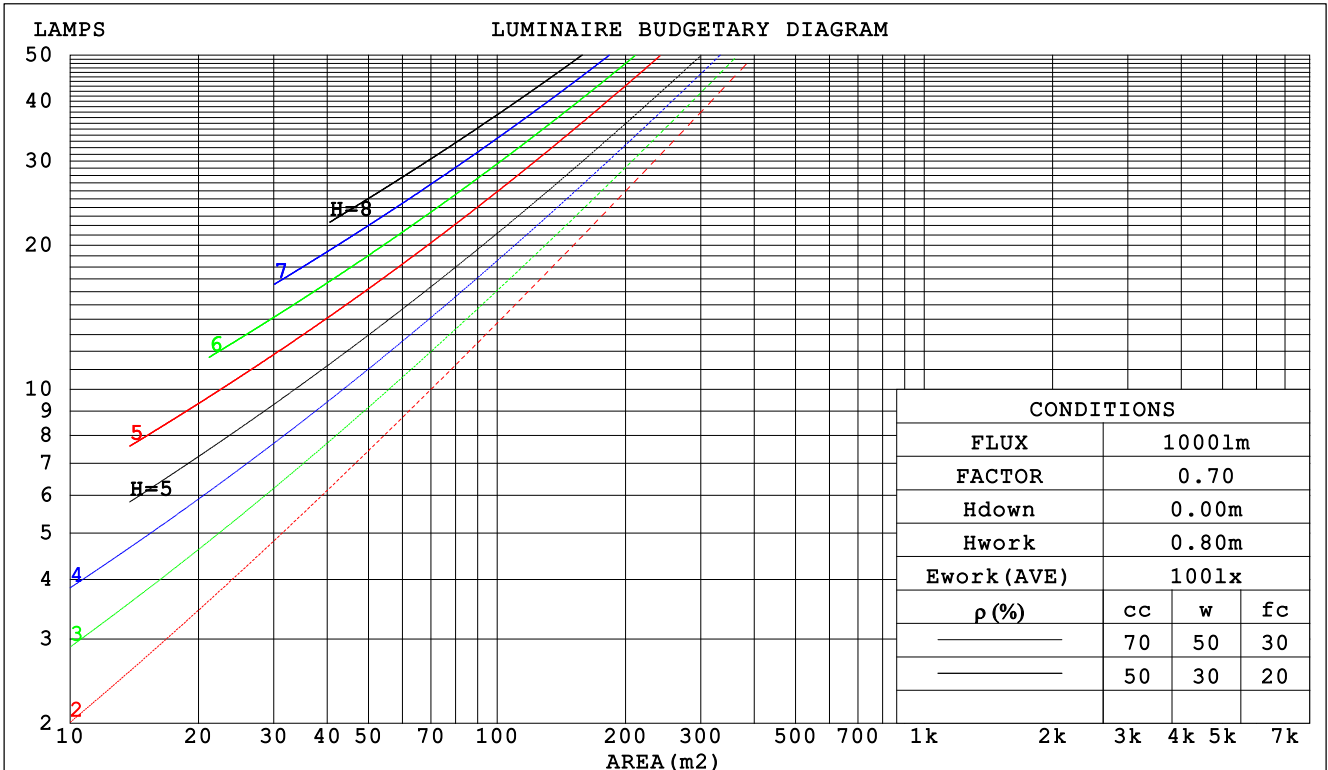
C Range: 0 - 360DEG  
 C Interval: 30.0DEG  
 Test Speed: HIGH  
 Temperature:25.3DEG  
 Operators:  
 Test Date:2024-03-04

$\gamma$  Range: 0 - 180DEG  
 $\gamma$  Interval: 1.0DEG  
 Test System:EVERFINE GO-2000A\_V1 SYSTEM V2.0.354  
 Humidity:65.0%  
 Test Distance:11.227m [K=1.1481]  
 Remarks:

CU AND LUMINAIRE BUDGETARY ESTIMATE DIAGRAM

Test:U:12.00V I:1.245A P:14.94W PF:1.000 Freq:50.01Hz Lamp Flux:1821.44x1 lm		
NAME: 7153 2835 156LED/M 2700K IRC90 12V	TYPE:	WEIGHT:
SPEC.:	DIM.:	SERIAL No.:
MFR.:	SUR.:	Shielding Angle:

$\rho_{cc}$	80%			70%			50%			30%			10%			0
$\rho_w$	50%	30%	10%	50%	30%	10%	50%	30%	10%	50%	30%	10%	50%	30%	10%	0
$\rho_{fc}$	20%			20%			20%			20%			20%			0
RCR	RCR:Room Cavity Ratio						Coefficients of Utilization(CU)									
0.0	1.19	1.19	1.19	1.16	1.16	1.16	1.11	1.11	1.11	1.06	1.06	1.06	1.01	1.01	1.01	.99
1.0	1.04	.99	.95	1.01	.97	.94	.97	.94	.91	.93	.90	.88	.89	.87	.85	.83
2.0	.90	.83	.78	.88	.82	.77	.84	.79	.75	.81	.77	.73	.78	.74	.71	.69
3.0	.79	.71	.64	.77	.70	.64	.74	.68	.62	.71	.66	.61	.69	.64	.60	.58
4.0	.70	.61	.54	.69	.60	.54	.66	.59	.53	.63	.57	.52	.61	.56	.51	.49
5.0	.62	.53	.47	.61	.53	.46	.59	.51	.46	.57	.50	.45	.55	.49	.45	.42
6.0	.56	.47	.41	.55	.47	.40	.53	.46	.40	.51	.45	.40	.50	.44	.39	.37
7.0	.51	.42	.36	.50	.42	.36	.48	.41	.35	.47	.40	.35	.45	.39	.35	.33
8.0	.46	.38	.32	.46	.37	.32	.44	.37	.31	.43	.36	.31	.42	.35	.31	.29
9.0	.42	.34	.29	.42	.34	.29	.41	.33	.28	.39	.33	.28	.38	.32	.28	.26
10.0	.39	.31	.26	.39	.31	.26	.38	.31	.26	.37	.30	.25	.36	.30	.25	.24



C Range: 0 - 360DEG  
 C Interval: 30.0DEG  
 Test Speed: HIGH  
 Temperature:25.3DEG  
 Operators:  
 Test Date:2024-03-04

$\gamma$  Range: 0 - 180DEG  
 $\gamma$  Interval: 1.0DEG  
 Test System:EVERFINE GO-2000A\_V1 SYSTEM V2.0.354  
 Humidity:65.0%  
 Test Distance:11.227m [K=1.1481]  
 Remarks:

WEC AND CCEC

Test:U:12.00V I:1.245A P:14.94W PF:1.000 Freq:50.01Hz Lamp Flux:1821.44x1 lm		
NAME: 7153 2835 156LED/M 2700K IRC90 12V	TYPE:	WEIGHT:
SPEC.:	DIM.:	SERIAL No.:
MFR.:	SUR.:	Shielding Angle:

ρcc	80%			70%			50%			30%			10%			0
ρw	50%	30%	10%	50%	30%	10%	50%	30%	10%	50%	30%	10%	50%	30%	10%	0
ρfc	20%			20%			20%			20%			20%			0
RCR	RCR:Room Cavity Ratio						Wall Exitance Coefficients (WEC)									
0.0																
1.0	.309	.176	.056	.301	.172	.055	.288	.165	.053	.275	.159	.051	.263	.152	.049	
2.0	.291	.160	.049	.285	.157	.048	.273	.152	.047	.261	.147	.046	.251	.142	.045	
3.0	.270	.144	.043	.264	.142	.043	.253	.137	.042	.243	.133	.041	.234	.130	.040	
4.0	.249	.130	.038	.244	.128	.038	.235	.124	.037	.226	.121	.037	.217	.118	.036	
5.0	.231	.118	.034	.226	.116	.034	.217	.113	.033	.209	.110	.033	.202	.108	.032	
6.0	.214	.107	.031	.210	.106	.031	.202	.104	.030	.195	.101	.030	.188	.099	.029	
7.0	.199	.098	.028	.195	.097	.028	.189	.095	.027	.182	.093	.027	.176	.091	.027	
8.0	.186	.091	.026	.183	.090	.025	.176	.088	.025	.171	.086	.025	.165	.085	.025	
9.0	.174	.084	.024	.171	.083	.023	.166	.082	.023	.160	.080	.023	.156	.079	.023	
10.0	.164	.079	.022	.161	.078	.022	.156	.076	.022	.151	.075	.021	.147	.074	.021	

ρcc	80%			70%			50%			30%			10%			0
ρw	50%	30%	10%	50%	30%	10%	50%	30%	10%	50%	30%	10%	50%	30%	10%	0
ρfc	20%			20%			20%			20%			20%			0
RCR	RCR:Room Cavity Ratio						Ceiling Cavity Exitance Coefficients (CCEC)									
0.0	.199	.199	.199	.170	.170	.170	.116	.116	.116	.067	.067	.067	.021	.021	.021	
1.0	.189	.165	.143	.161	.141	.123	.110	.097	.085	.064	.056	.049	.020	.018	.016	
2.0	.181	.140	.106	.155	.121	.092	.106	.084	.064	.061	.049	.038	.020	.016	.012	
3.0	.173	.123	.083	.148	.106	.072	.102	.074	.050	.059	.043	.030	.019	.014	.010	
4.0	.165	.110	.067	.142	.095	.058	.098	.066	.041	.056	.039	.024	.018	.013	.008	
5.0	.158	.099	.056	.136	.086	.048	.093	.060	.034	.054	.035	.020	.017	.011	.007	
6.0	.151	.091	.048	.130	.079	.042	.089	.055	.029	.052	.032	.017	.017	.011	.006	
7.0	.144	.084	.042	.124	.073	.036	.086	.051	.026	.050	.030	.015	.016	.010	.005	
8.0	.138	.078	.037	.119	.068	.033	.082	.048	.023	.048	.028	.014	.015	.009	.005	
9.0	.132	.073	.034	.113	.064	.029	.079	.045	.021	.046	.026	.012	.015	.009	.004	
10.0	.126	.069	.031	.109	.060	.027	.075	.042	.019	.044	.025	.011	.014	.008	.004	

C Range: 0 - 360DEG  
 C Interval: 30.0DEG  
 Test Speed: HIGH  
 Temperature:25.3DEG  
 Operators:  
 Test Date:2024-03-04

γ Range: 0 - 180DEG  
 γ Interval: 1.0DEG  
 Test System:EVERFINE GO-2000A\_V1 SYSTEM V2.0.354  
 Humidity:65.0%  
 Test Distance:11.227m [K=1.1481]  
 Remarks:

**UGR(Unified Glare Rating) Table**

Test:U:12.00V I:1.245A P:14.94W PF:1.000 Freq:50.01Hz Lamp Flux:1821.44x1 lm										
NAME: 7153 2835 156LED/M 2700K IRC90 12V					TYPE:			WEIGHT:		
SPEC.:					DIM.:			SERIAL No.:		
MFR.:					SUR.:			Shielding Angle:		
ceiling/cavity	0.7	0.7	0.5	0.5	0.3	0.7	0.7	0.5	0.5	0.3
walls	0.5	0.3	0.5	0.3	0.3	0.5	0.3	0.5	0.3	0.3
working plane	0.2	0.2	0.2	0.2	0.2	0.2	0.2	0.2	0.2	0.2
Room dimensions	Viewed crosswise					Viewed endwise				
x = 2H y = 2H	25.2	26.7	25.5	26.9	27.2	24.9	26.5	25.2	26.7	26.9
3H	26.8	28.2	27.1	28.5	28.7	26.4	27.8	26.7	28.1	28.3
4H	27.5	28.8	27.8	29.1	29.4	27.0	28.3	27.3	28.6	28.9
6H	27.9	29.2	28.3	29.5	29.8	27.3	28.6	27.7	28.9	29.2
8H	28.1	29.3	28.5	29.6	29.9	27.4	28.6	27.8	28.9	29.3
12H	28.2	29.3	28.6	29.7	30.0	27.5	28.6	27.8	28.9	29.3
4H 2H	25.8	27.1	26.2	27.4	27.7	25.6	26.9	25.9	27.2	27.5
3H	27.6	28.8	28.0	29.1	29.4	27.3	28.4	27.6	28.8	29.1
4H	28.4	29.5	28.8	29.8	30.2	28.0	29.0	28.3	29.4	29.7
6H	29.0	29.9	29.4	30.3	30.7	28.4	29.4	28.8	29.7	30.1
8H	29.2	30.1	29.6	30.5	30.9	28.6	29.4	29.0	29.8	30.2
12H	29.3	30.1	29.8	30.6	31.0	28.6	29.4	29.1	29.8	30.3
8H 4H	28.6	29.5	29.1	29.9	30.3	28.3	29.1	28.7	29.5	29.9
6H	29.4	30.1	29.9	30.6	31.0	28.9	29.6	29.3	30.0	30.5
8H	29.7	30.3	30.2	30.8	31.3	29.1	29.7	29.6	30.2	30.7
12H	29.9	30.5	30.4	30.9	31.4	29.2	29.8	29.7	30.2	30.7
12H 4H	28.7	29.5	29.1	29.9	30.3	28.3	29.1	28.7	29.5	29.9
6H	29.4	30.1	29.9	30.5	31.0	28.9	29.6	29.4	30.0	30.5
8H	29.8	30.3	30.3	30.8	31.3	29.2	29.8	29.7	30.2	30.7
Variations with the observer position at spacings:										
S = 1.0H	+ 0.1 / - 0.2					+ 0.2 / - 0.2				
1.5H	+ 0.2 / - 0.3					+ 0.2 / - 0.3				
2.0H	+ 0.2 / - 0.3					+ 0.2 / - 0.4				

CIE Pub.117, 1821 lm Total Lamp Luminous Flux Correct (8log(F/F0) = 2.1)

C Range: 0 - 360DEG  
 C Interval: 30.0DEG  
 Test Speed: HIGH  
 Temperature:25.3DEG  
 Operators:  
 Test Date:2024-03-04

γ Range: 0 - 180DEG  
 γ Interval: 1.0DEG  
 Test System:EVERFINE GO-2000A\_V1 SYSTEM V2.0.354  
 Humidity:65.0%  
 Test Distance:11.227m [K=1.1481]  
 Remarks:

**UTILIZATION FACTORS TABLE**

Test:U:12.00V I:1.245A P:14.94W PF:1.000 Freq:50.01Hz Lamp Flux:1821.44x1 lm		
NAME: 7153 2835 156LED/M 2700K IRC90 12V	TYPE:	WEIGHT:
SPEC.:	DIM.:	SERIAL No.:
MFR.:	SUR.:	Shielding Angle:

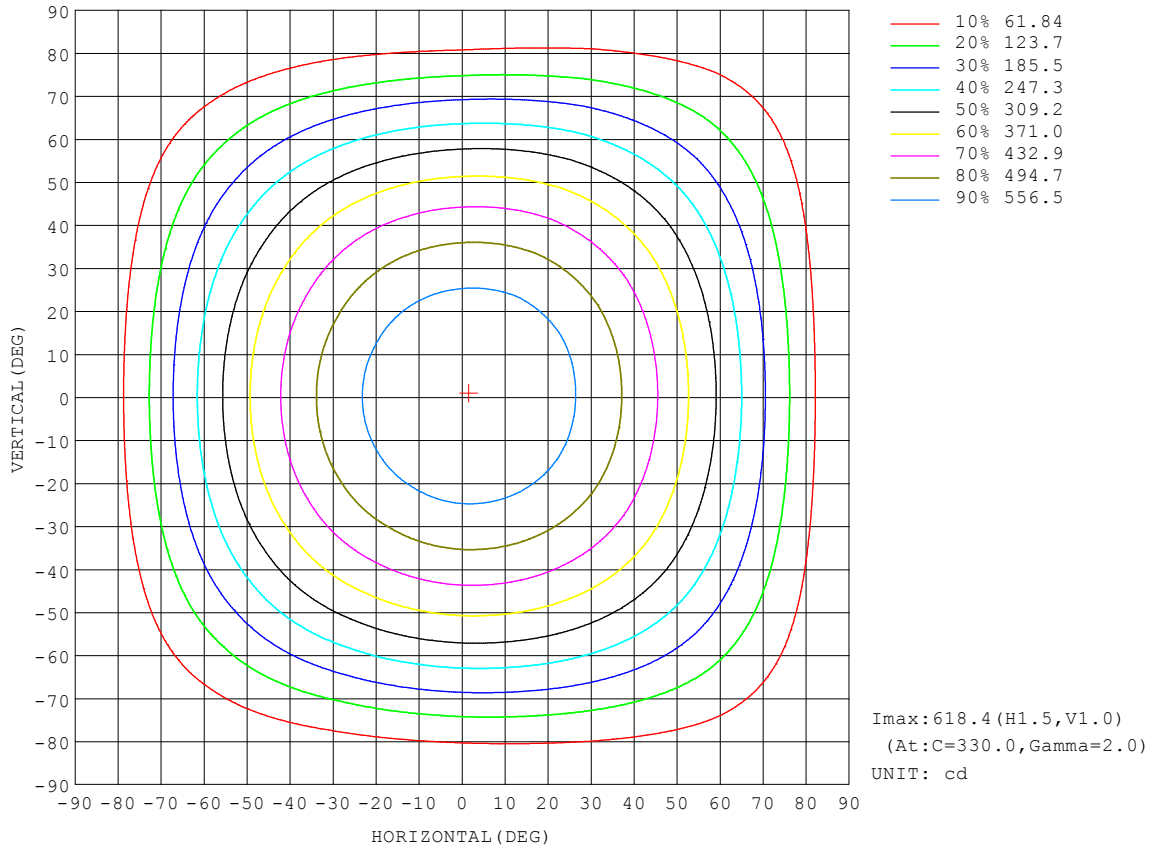
REFLECTANCE										
Ceiling	0.8	0.8	0.8	0.7	0.7	0.7	0.5	0.5	0.5	0
Walls	0.7	0.5	0.3	0.7	0.5	0.3	0.7	0.5	0.3	0
Working plane	0.2	0.2	0.2	0.2	0.2	0.2	0.2	0.2	0.2	0
ROOM INDEX	UTILIZATION FACTORS (PERCENT) $k(RI) \times RCR = 5$									
k = 0.60	57	45	38	56	45	38	55	44	38	31
0.80	67	55	48	66	55	48	64	54	47	40
1.00	75	64	57	74	64	57	72	65	56	49
1.25	83	72	65	81	71	64	78	70	63	56
1.50	88	78	71	86	77	70	83	75	69	61
2.00	95	86	79	93	85	79	89	82	77	69
2.50	98	91	85	96	89	84	92	86	82	73
3.00	102	95	89	100	93	88	95	90	86	77
4.00	106	100	96	103	98	94	99	95	91	82
5.00	108	104	99	106	101	98	101	98	95	85
ROOM INDEX	UF(total)									Direct
According to DIN EN 13032-2 2004			Suspended				SHRNOM = 1.25			

C Range: 0 - 360DEG  
 C Interval: 30.0DEG  
 Test Speed: HIGH  
 Temperature:25.3DEG  
 Operators:  
 Test Date:2024-03-04

$\gamma$  Range: 0 - 180DEG  
 $\gamma$  Interval: 1.0DEG  
 Test System:EVERFINE GO-2000A\_V1 SYSTEM V2.0.354  
 Humidity:65.0%  
 Test Distance:11.227m [K=1.1481]  
 Remarks:

**ISOCANDELA DIAGRAM**

Test:U:12.00V I:1.245A P:14.94W PF:1.000 Freq:50.01Hz Lamp Flux:1821.44x1 lm		
NAME: 7153 2835 156LED/M 2700K IRC90 12V	TYPE:	WEIGHT:
SPEC.:	DIM.:	SERIAL No.:
MFR.:	SUR.:	Shielding Angle:



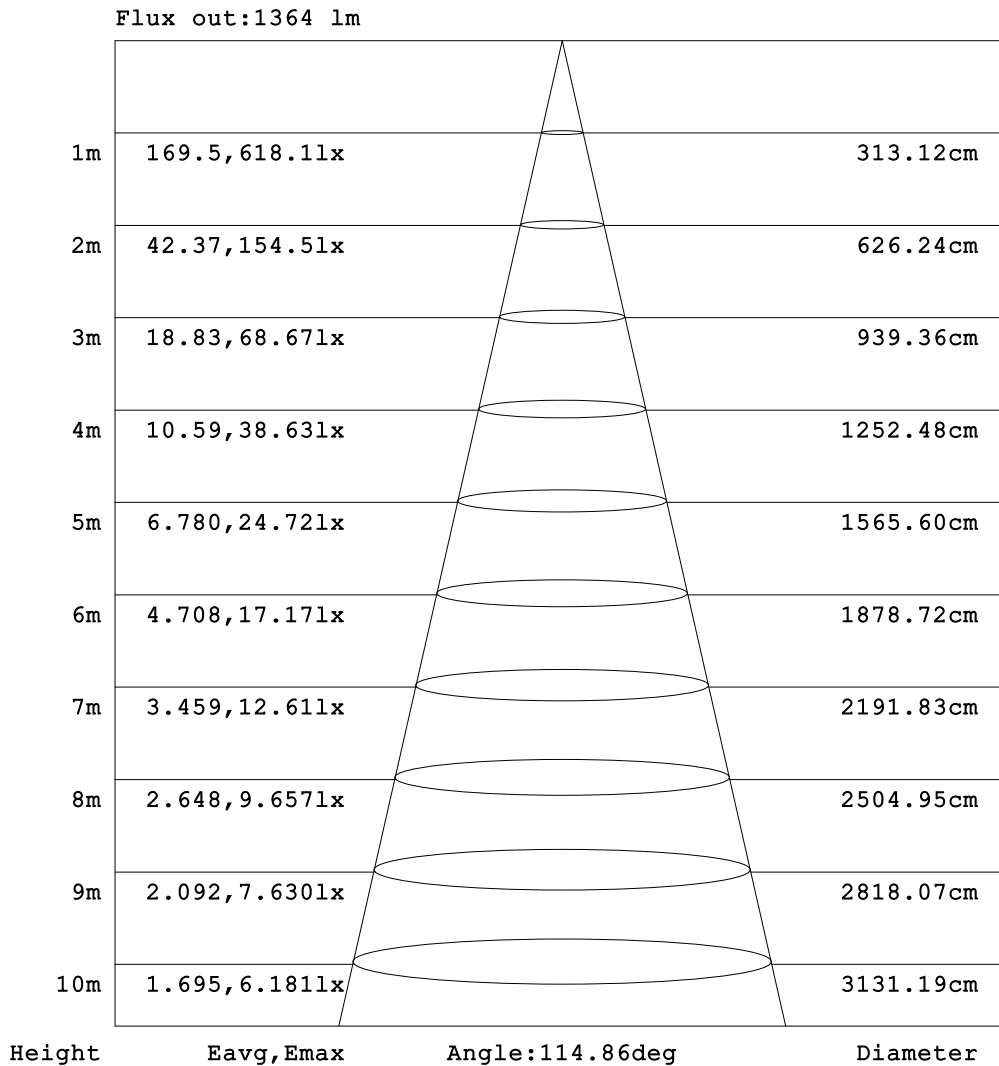
C Range: 0 - 360DEG  
 C Interval: 30.0DEG  
 Test Speed: HIGH  
 Temperature: 25.3DEG  
 Operators:  
 Test Date: 2024-03-04

γ Range: 0 - 180DEG  
 γ Interval: 1.0DEG  
 Test System: EVERFINE GO-2000A\_V1 SYSTEM V2.0.354  
 Humidity: 65.0%  
 Test Distance: 11.227m [K=1.1481]  
 Remarks:



AAI Figure

Test:U:12.00V I:1.245A P:14.94W PF:1.000 Freq:50.01Hz Lamp Flux:1821.44x1 lm		
NAME: 7153 2835 156LED/M 2700K IRC90 12V	TYPE:	WEIGHT:
SPEC.:	DIM.:	SERIAL No.:
MFR.:	SUR.:	Shielding Angle:



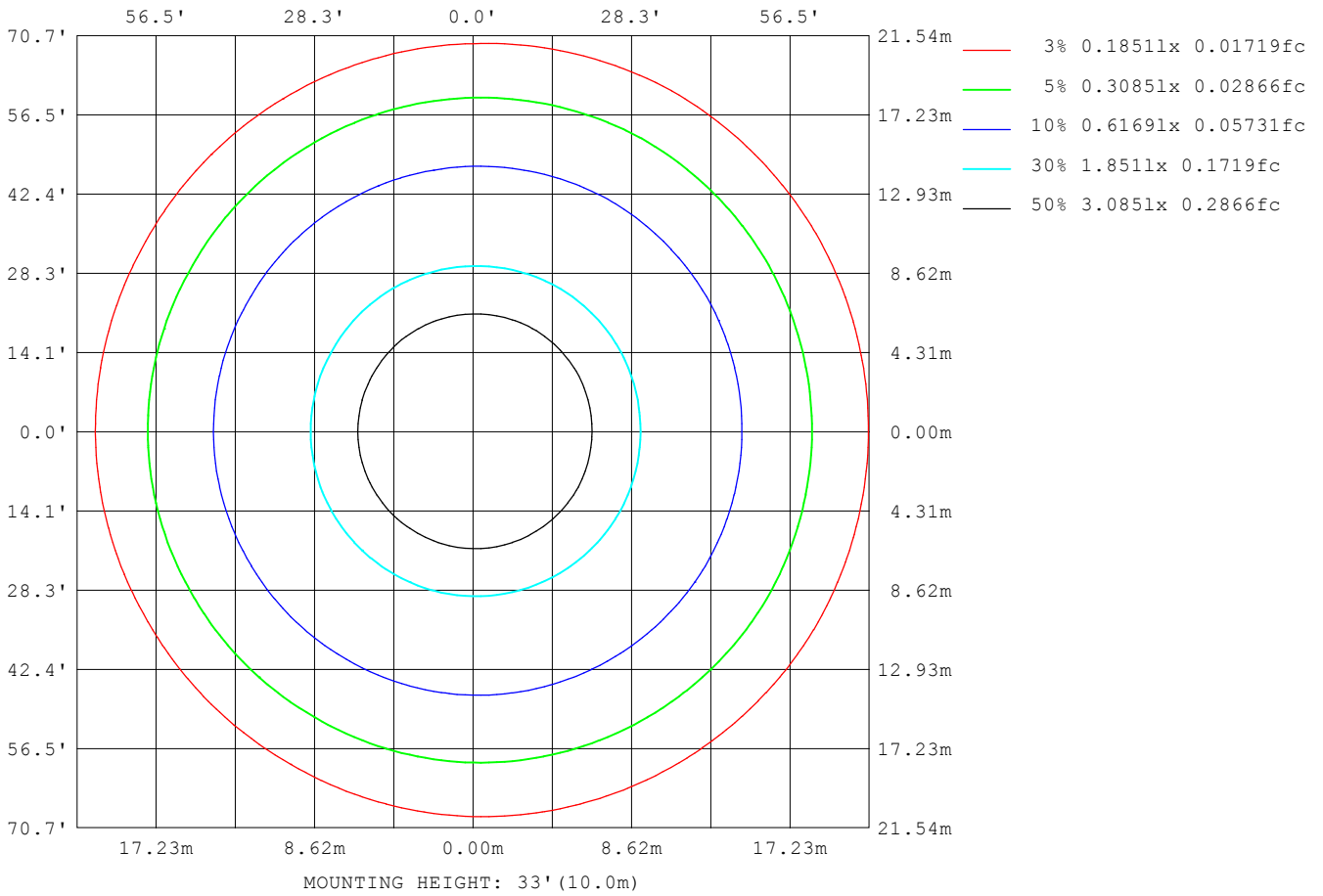
Note: The Curves indicate the illuminated area and the average illumination when the luminaire is at different distance.

C Range: 0 - 360DEG  
 C Interval: 30.0DEG  
 Test Speed: HIGH  
 Temperature: 25.3DEG  
 Operators:  
 Test Date: 2024-03-04

γ Range: 0 - 180DEG  
 γ Interval: 1.0DEG  
 Test System: EVERFINE GO-2000A\_V1 SYSTEM V2.0.354  
 Humidity: 65.0%  
 Test Distance: 11.227m [K=1.1481]  
 Remarks:

ISOLUX DIAGRAM

Test:U:12.00V I:1.245A P:14.94W PF:1.000 Freq:50.01Hz Lamp Flux:1821.44x1 lm		
NAME: 7153 2835 156LED/M 2700K IRC90 12V	TYPE:	WEIGHT:
SPEC.:	DIM.:	SERIAL No.:
MFR.:	SUR.:	Shielding Angle:



C Range: 0 - 360DEG  
 C Interval: 30.0DEG  
 Test Speed: HIGH  
 Temperature:25.3DEG  
 Operators:  
 Test Date:2024-03-04

γ Range: 0 - 180DEG  
 γ Interval: 1.0DEG  
 Test System:EVERFINE GO-2000A\_V1 SYSTEM V2.0.354  
 Humidity:65.0%  
 Test Distance:11.227m [K=1.1481]  
 Remarks:

**LED Avg.L Report**

Test:U:12.00V I:1.245A P:14.94W PF:1.000 Freq:50.01Hz Lamp Flux:1821.44x1 lm		
NAME: 7153 2835 156LED/M 2700K IRC90 12V	TYPE:	WEIGHT:
SPEC.:	DIM.:	SERIAL No.:
MFR.:	SUR.:	Shielding Angle:

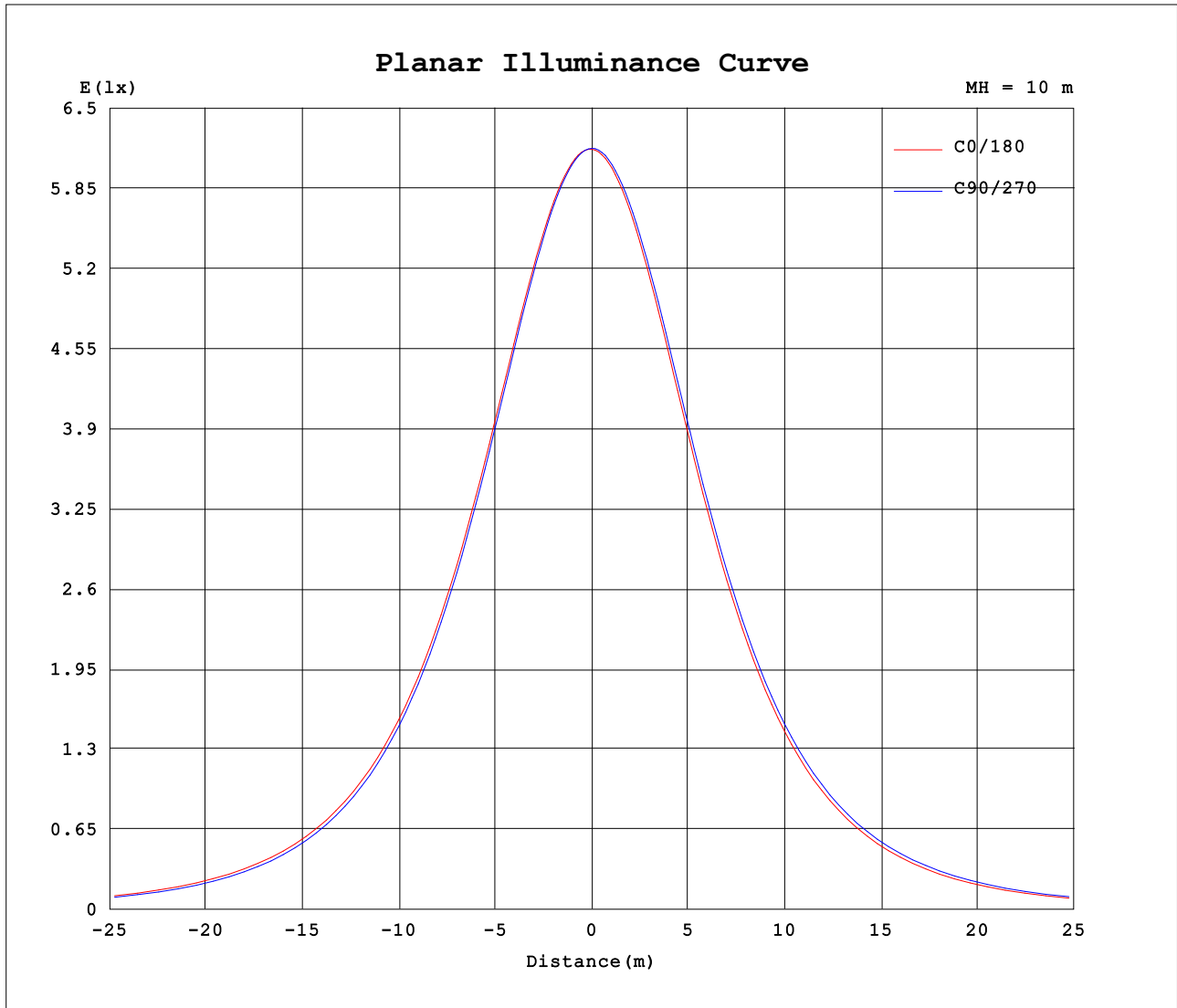
AvgL	cd/m2
L_0~180 (65) av	54124
L_0~180 (75) av	45652
L_0~180 (85) av	27251
L_90~270 (65) av	54023
L_90~270 (75) av	45674
L_90~270 (85) av	27673
L_45 (65) av	54078
L_45 (75) av	45717
L_45 (85) av	30508

Standard: GB/T 29293-2012

C Range: 0 - 360DEG  
 C Interval: 30.0DEG  
 Test Speed: HIGH  
 Temperature:25.3DEG  
 Operators:  
 Test Date:2024-03-04

γ Range: 0 - 180DEG  
 γ Interval: 1.0DEG  
 Test System:EVERFINE GO-2000A\_V1 SYSTEM V2.0.354  
 Humidity:65.0%  
 Test Distance:11.227m [K=1.1481]  
 Remarks:

Planar Illuminance Curve



C Range: 0 - 360DEG  
 C Interval: 30.0DEG  
 Test Speed: HIGH  
 Temperature: 25.3DEG  
 Operators:  
 Test Date: 2024-03-04

γ Range: 0 - 180DEG  
 γ Interval: 1.0DEG  
 Test System: EVERFINE GO-2000A\_V1 SYSTEM V2.0.354  
 Humidity: 65.0%  
 Test Distance: 11.227m [K=1.1481]  
 Remarks:

LUMINOUS DISTRIBUTION INTENSITY DATA

Test:U:12.00V I:1.245A P:14.94W PF:1.000 Freq:50.01Hz Lamp Flux:1821.44x1 lm		
NAME: 7153 2835 156LED/M 2700K IRC90 12V	TYPE:	WEIGHT:
SPEC.:	DIM.:	SERIAL No.:
MFR.:	SUR.:	Shielding Angle:

Table--1

UNIT: cd

C (DEG) \ γ (DEG)	0	30	60	90	120	150	180	210	240	270	300	330							
0	617	617	617	618	618	618	617	617	617	618	618	618							
5	616	616	615	615	614	614	613	613	614	615	617	617							
10	610	610	609	607	605	604	604	604	606	608	611	612							
15	599	599	597	595	592	590	590	590	593	596	600	601							
20	584	583	580	577	573	571	571	572	576	579	584	586							
25	563	562	559	555	550	548	547	548	553	558	564	565							
30	538	537	533	528	522	519	519	521	526	532	538	540							
35	509	507	502	497	490	487	487	488	495	501	509	511							
40	475	473	468	462	453	450	450	452	459	466	475	477							
45	437	435	429	422	412	409	410	411	419	426	437	439							
50	395	393	386	378	368	363	365	366	375	383	394	398							
55	349	347	339	330	319	315	316	318	327	336	348	352							
60	300	297	288	279	267	262	264	266	276	286	298	301							
65	248	245	235	225	213	208	210	212	222	232	245	249							
70	191	190	180	170	157	152	154	156	166	176	190	194							
75	137	134	125	115	103	97.1	99.6	101	112	121	135	139							
80	83.0	81.5	73.9	64.9	54.7	48.7	49.7	52.6	62.7	68.9	82.8	86.3							
85	36.5	36.1	30.4	23.5	16.8	12.3	11.0	14.0	21.8	24.8	38.3	40.5							
90	5.19	6.01	5.62	1.13	3.57	2.44	1.53	1.78	2.60	1.25	7.85	8.35							
95	1.10	1.31	1.88	1.11	2.54	1.93	1.44	1.48	1.38	1.32	1.48	1.49							
100	1.30	1.26	1.36	1.47	1.87	1.86	1.67	1.68	1.75	1.70	1.62	1.52							
105	1.55	1.57	1.68	1.83	1.87	1.97	2.04	2.05	2.10	2.08	1.97	1.86							
110	1.87	1.91	2.07	2.19	2.17	2.24	2.43	2.45	2.48	2.49	2.34	2.24							
115	2.25	2.25	2.42	2.57	2.55	2.55	2.81	2.85	2.87	2.87	2.74	2.58							
120	2.64	2.61	2.70	2.93	2.86	2.87	3.19	3.20	3.22	3.23	3.13	2.94							
125	2.93	2.95	3.10	3.31	3.22	3.23	3.55	3.56	3.56	3.61	3.41	3.29							
130	3.29	3.31	3.44	3.64	3.58	3.56	3.86	3.86	3.87	3.89	3.78	3.62							
135	3.66	3.65	3.80	3.97	3.88	3.92	4.18	4.17	4.19	4.19	4.01	3.97							
140	3.98	3.99	4.05	4.25	4.22	4.22	4.50	4.49	4.49	4.51	4.32	4.28							
145	4.27	4.31	4.37	4.56	4.52	4.54	4.73	4.74	4.72	4.75	4.59	4.56							
150	4.58	4.62	4.66	4.84	4.79	4.80	4.94	4.93	4.95	4.94	4.85	4.80							
155	4.82	4.90	4.88	5.06	5.04	5.04	5.15	5.13	5.16	5.14	5.05	5.04							
160	5.12	5.16	5.11	5.34	5.35	5.28	5.41	5.34	5.41	5.36	5.23	5.25							
165	5.37	5.38	5.35	5.54	5.53	5.48	5.59	5.49	5.56	5.56	5.44	5.48							
170	5.68	5.61	5.63	5.73	5.70	5.68	5.76	5.68	5.74	5.73	5.62	5.63							
175	5.89	5.79	5.83	5.90	5.91	5.86	5.94	5.84	5.85	5.88	5.81	5.81							
180	6.03	5.92	5.92	5.99	5.93	5.95	6.05	5.92	5.92	6.00	5.92	5.93							

C Range: 0 - 360DEG  
 C Interval: 30.0DEG  
 Test Speed: HIGH  
 Temperature:25.3DEG  
 Operators:  
 Test Date:2024-03-04

γ Range: 0 - 180DEG  
 γ Interval: 1.0DEG  
 Test System:EVERFINE GO-2000A\_V1 SYSTEM V2.0.354  
 Humidity:65.0%  
 Test Distance:11.227m [K=1.1481]  
 Remarks:

**Photometric Data Table [cd]**

G/C	0.0	30.0	60.0	90.0	120.0	150.0	180.0	210.0	240.0	270.0
0.0	616.9	616.8	617.2	617.6	618.1	618.1	616.9	616.8	617.2	617.6
3.0	617.0	616.7	616.7	616.6	616.3	616.1	615.0	615.0	616.0	616.9
6.0	615.2	614.9	614.4	613.8	612.8	612.3	611.4	611.5	613.0	614.4
9.0	611.6	611.2	610.3	609.1	607.5	606.7	606.0	606.2	608.3	610.1
12.0	606.3	605.9	604.5	602.8	600.6	599.3	598.7	599.2	601.7	604.1
15.0	599.2	598.7	596.8	594.6	591.8	590.3	589.8	590.4	593.4	596.4
18.0	590.4	589.7	587.4	584.7	581.3	579.4	579.2	579.8	583.4	586.9
21.0	579.8	579.1	576.3	573.2	569.0	566.9	566.7	567.5	571.5	575.5
24.0	567.5	566.8	563.6	559.9	555.1	552.7	552.5	553.5	558.0	562.5
27.0	553.6	552.7	549.1	545.0	539.4	536.8	536.7	537.9	542.8	548.0
30.0	538.1	537.1	533.0	528.4	522.2	519.4	519.4	520.6	526.1	531.6
33.0	520.9	519.9	515.2	510.3	503.3	500.3	500.5	501.7	507.7	513.7
36.0	502.0	501.1	495.7	490.5	482.8	479.6	480.1	481.2	487.8	494.2
39.0	481.9	480.7	475.0	469.3	461.0	457.5	458.0	459.2	466.2	473.1
42.0	460.1	458.7	452.6	446.3	437.4	433.7	434.3	435.5	443.0	450.3
45.0	436.8	435.3	428.6	421.9	412.3	408.6	409.6	410.6	418.7	426.1
48.0	412.3	410.5	403.3	396.1	386.2	381.9	383.0	384.3	392.7	400.7
51.0	385.9	384.2	376.3	368.8	358.2	353.8	355.1	356.7	365.3	373.9
54.0	358.5	356.5	348.5	340.0	329.3	324.5	325.9	327.6	336.8	345.4
57.0	329.8	327.7	319.2	310.2	299.0	294.1	295.4	297.2	306.6	315.8
60.0	299.9	297.4	288.4	278.9	267.4	262.4	264.2	266.1	275.7	286.5
63.0	268.9	265.9	257.0	246.7	235.1	229.6	231.7	233.8	243.5	254.1
66.0	236.4	233.9	224.4	214.2	201.9	196.4	198.6	200.7	210.5	220.5
69.0	202.4	201.0	191.2	180.9	168.3	162.8	165.3	167.1	177.3	187.5
72.0	169.0	167.5	157.5	147.7	134.6	129.2	131.8	133.9	143.9	154.9
75.0	136.7	134.3	124.9	115.4	102.6	97.10	99.59	101.4	111.9	121.0
78.0	103.6	101.9	93.59	84.43	72.99	67.29	68.92	71.20	81.50	88.94
81.0	72.78	71.69	64.29	55.69	45.85	40.33	40.79	43.82	53.66	59.22
84.0	45.02	44.65	38.23	30.71	22.86	18.06	17.02	20.20	29.00	32.57
87.0	20.82	21.42	17.24	12.66	8.224	5.442	4.176	5.533	10.61	11.44
90.0	5.187	6.006	5.616	1.129	3.570	2.440	1.535	1.778	2.599	1.247
93.0	1.232	1.594	2.364	1.013	2.860	2.060	1.382	1.406	1.334	1.191
96.0	1.131	1.250	1.364	1.215	2.349	1.882	1.489	1.489	1.477	1.416
99.0	1.285	1.251	1.322	1.406	2.122	1.858	1.608	1.619	1.656	1.631
102.0	1.358	1.382	1.535	1.608	1.882	1.870	1.811	1.869	1.895	1.869
105.0	1.548	1.573	1.678	1.835	1.870	1.966	2.038	2.048	2.098	2.084
108.0	1.738	1.787	1.881	2.049	2.048	2.120	2.287	2.274	2.323	2.310
111.0	1.929	1.989	2.108	2.275	2.238	2.287	2.502	2.501	2.573	2.548
114.0	2.143	2.192	2.286	2.478	2.453	2.466	2.740	2.738	2.776	2.822
117.0	2.369	2.406	2.512	2.704	2.655	2.680	2.978	2.989	3.014	3.013
120.0	2.642	2.609	2.703	2.930	2.858	2.871	3.192	3.203	3.216	3.227
123.0	2.822	2.835	3.035	3.157	3.084	3.085	3.407	3.406	3.419	3.453
126.0	3.024	3.073	3.226	3.359	3.263	3.312	3.598	3.596	3.633	3.668
129.0	3.215	3.240	3.393	3.585	3.477	3.526	3.800	3.787	3.824	3.846
132.0	3.429	3.454	3.584	3.776	3.691	3.728	4.002	3.977	3.990	3.989
135.0	3.656	3.645	3.798	3.966	3.882	3.919	4.181	4.168	4.193	4.192
138.0	3.822	3.859	3.965	4.145	4.096	4.109	4.383	4.370	4.372	4.371
141.0	4.001	4.050	4.132	4.324	4.298	4.300	4.550	4.549	4.538	4.549
144.0	4.180	4.240	4.322	4.526	4.442	4.490	4.669	4.656	4.693	4.728
147.0	4.418	4.455	4.524	4.693	4.608	4.645	4.800	4.799	4.812	4.835
150.0	4.585	4.621	4.656	4.836	4.787	4.800	4.943	4.930	4.955	4.942
153.0	4.716	4.800	4.788	4.967	4.942	4.955	5.062	5.085	5.097	5.108
156.0	4.918	4.967	4.930	5.109	5.132	5.098	5.193	5.168	5.229	5.180
159.0	5.049	5.110	5.061	5.288	5.299	5.229	5.325	5.288	5.325	5.336
162.0	5.215	5.241	5.192	5.407	5.371	5.348	5.431	5.406	5.443	5.489
165.0	5.371	5.383	5.347	5.538	5.526	5.479	5.586	5.490	5.562	5.562
168.0	5.538	5.515	5.502	5.669	5.609	5.598	5.693	5.585	5.669	5.692
171.0	5.728	5.634	5.669	5.777	5.716	5.717	5.812	5.705	5.741	5.752
174.0	5.847	5.741	5.764	5.860	5.859	5.824	5.931	5.788	5.848	5.871
177.0	5.966	5.860	5.883	5.955	5.895	5.919	6.014	5.895	5.884	5.919
180.0	6.026	5.919	5.919	5.991	5.931	5.955	6.050	5.919	5.919	6.002
G/C	300.0	330.0								
0.0	618.1	618.1								
3.0	618.0	618.3								
6.0	616.1	616.7								
9.0	612.6	613.3								
12.0	607.2	608.1								
15.0	600.1	601.2								
18.0	591.2	592.5								
21.0	580.5	582.0								
24.0	568.1	569.8								
27.0	554.1	556.0								
30.0	538.4	540.4								

C Range: 0 - 360DEG  
 C Interval: 30.0DEG  
 Test Speed: HIGH  
 Temperature: 25.3DEG  
 Operators:  
 Test Date: 2024-03-04

γ Range: 0 - 180DEG  
 γ Interval: 1.0DEG  
 Test System: EVERFINE GO-2000A\_V1 SYSTEM V2.0.354  
 Humidity: 65.0%  
 Test Distance: 11.227m [K=1.1481]  
 Remarks:

Photometric Data Table [cd]

33.0	521.1	523.4
36.0	502.3	504.8
39.0	481.8	484.5
42.0	459.8	462.6
45.0	436.6	439.4
48.0	411.6	414.7
51.0	385.1	388.7
54.0	357.4	361.2
57.0	327.9	332.3
60.0	297.9	301.1
63.0	266.5	270.0
66.0	234.2	238.2
69.0	201.6	205.8
72.0	168.3	172.5
75.0	135.2	139.2
78.0	103.1	107.1
81.0	73.42	76.57
84.0	46.74	48.83
87.0	23.48	25.23
90.0	7.851	8.350
93.0	2.043	2.163
96.0	1.406	1.477
99.0	1.537	1.512
102.0	1.740	1.678
105.0	1.966	1.857
108.0	2.204	2.083
111.0	2.418	2.274
114.0	2.657	2.501
117.0	2.871	2.726
120.0	3.133	2.941
123.0	3.323	3.167
126.0	3.490	3.382
129.0	3.681	3.572
132.0	3.871	3.751
135.0	4.014	3.965
138.0	4.193	4.132
141.0	4.360	4.335
144.0	4.550	4.501
147.0	4.705	4.644
150.0	4.848	4.799
153.0	4.967	4.942
156.0	5.097	5.109
159.0	5.181	5.192
162.0	5.324	5.335
165.0	5.443	5.478
168.0	5.550	5.550
171.0	5.681	5.657
174.0	5.788	5.764
177.0	5.860	5.883
180.0	5.919	5.931

C Range: 0 - 360DEG  
 C Interval: 30.0DEG  
 Test Speed: HIGH  
 Temperature:25.3DEG  
 Operators:  
 Test Date:2024-03-04

γ Range: 0 - 180DEG  
 γ Interval: 1.0DEG  
 Test System:EVERFINE GO-2000A\_V1 SYSTEM V2.0.354  
 Humidity:65.0%  
 Test Distance:11.227m [K=1.1481]  
 Remarks: