

Report No.:

Test Time: 2022/11/24 15:29:44

## LUMINAIRE PHOTOMETRIC TEST REPORT

### Luminaire Property

Manufacturer: NOROECOR  
 Luminaire Type: 6399  
 Lamp Type:  
 Luminous Width: 0 mm  
 Luminous Length: 0 mm  
 Luminous Height: 0 mm

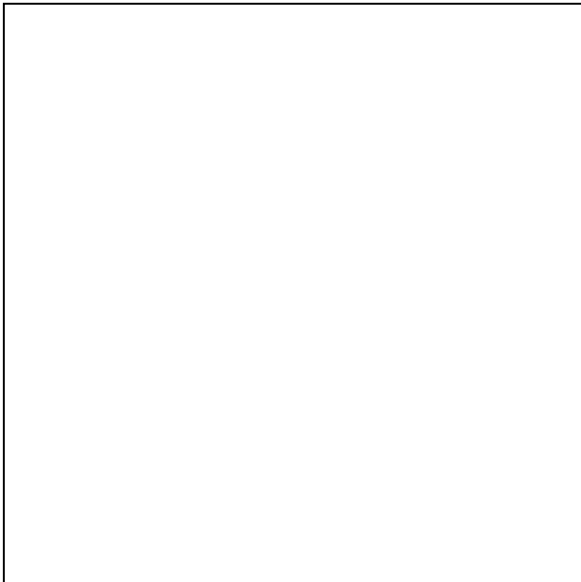
Voltage(V): 219.70 V  
 Current(A): 0.0510 A  
 Power(W): 5.89 W  
 Power Factor: 0.5170  
 Lamp Luminous Flux: 546.46

### Photometric Results

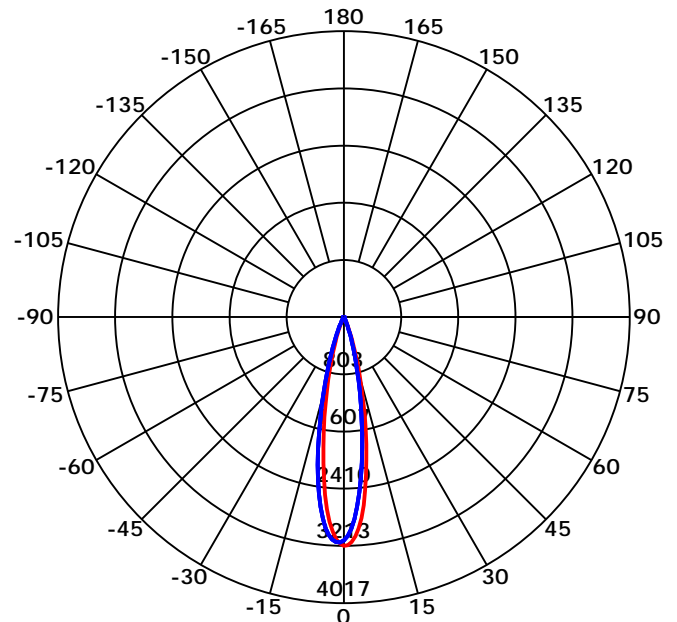
CIE Class: Direct  
 Luminaire Luminous Flux: 546.4636 lm  
 Downward Ratio: 100.00%  
 Luminaire Efficacy Rating(LER): 92.78 lm/W  
 Beam Angle(50%) C0-180,C90-270: 21.1,21.8  
 Field Angle(10%) C0-180,C90-270: 39.8,40.7  
 S/MH C0-180,C90-270: 0.389,0.389

Max. Intensity: 3213.29 cd  
 Max.Intensity Angle: C=180 Gamma=0  
 Upward Ratio: 0.00%  
 Efficacy: 100.00%  
 Center Intensity: 3213.29 cd  
 Effective Luminous Flux: 479.95 lm  
 ERP( $\varphi$ use)(120deg): 544.87 lm

Picture of Luminaire



Luminous Intensity Distribution Curve



Beam Angle(50%) C0-180,C90-270: 21.1 deg,21.8 deg

C0-180 ——— C90-270 ———

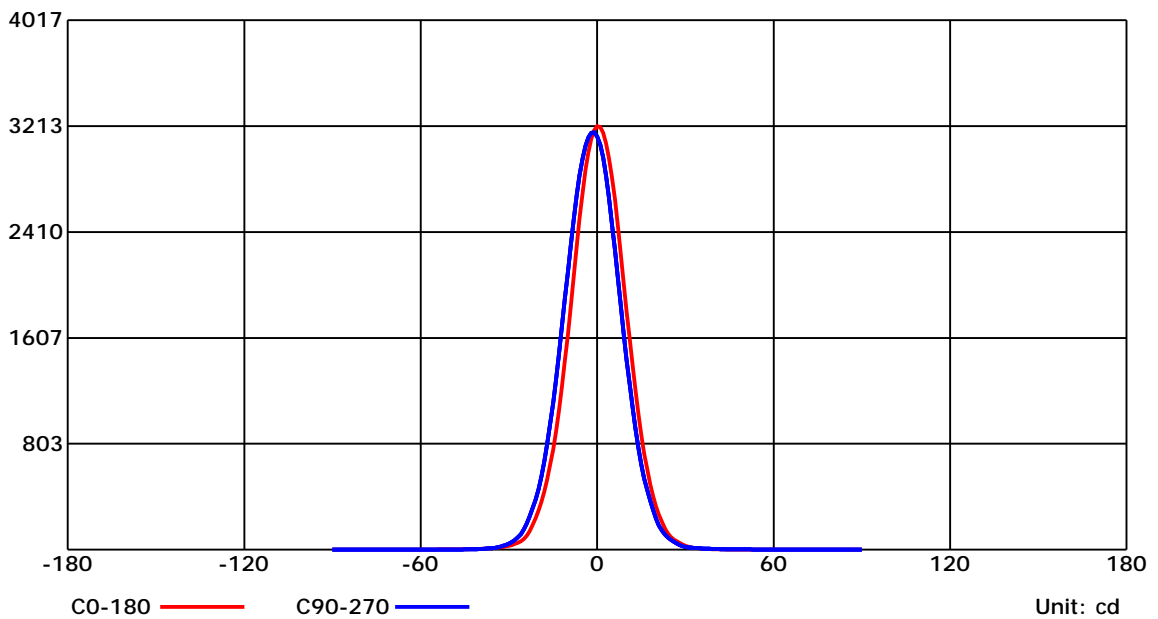
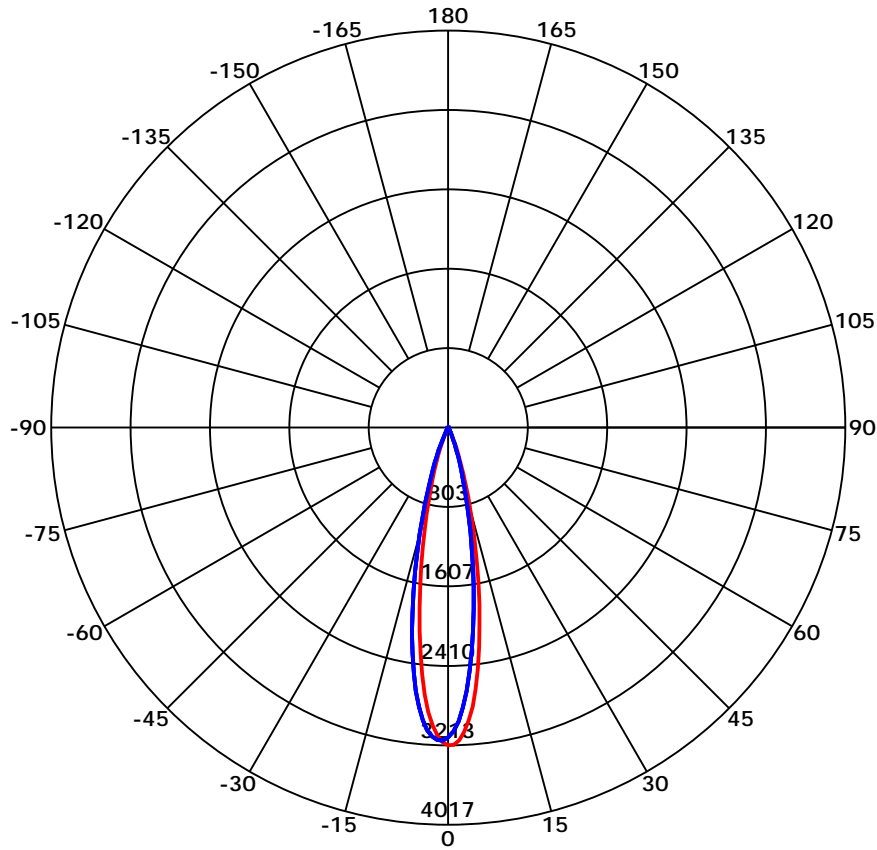
C Range: 0 - 360 Deg  
 C Interval: 45.0 Deg  
 Test Speed: High  
 Temperature: 6.38  
 Operators:  
 Test Date: 2022/11/24 15:29:44

G Range: 0 - 90 Deg  
 G Interval: 1.0 Deg  
 Test System: Huipu CPM-1800B Goniophotometer  
 Humidity: 1.33  
 Test Distance: 6.38 m  
 Remarks:

Report No.:

Test Time: 2022/11/24 15:29:44

## Luminous Intensity Distribution Curve



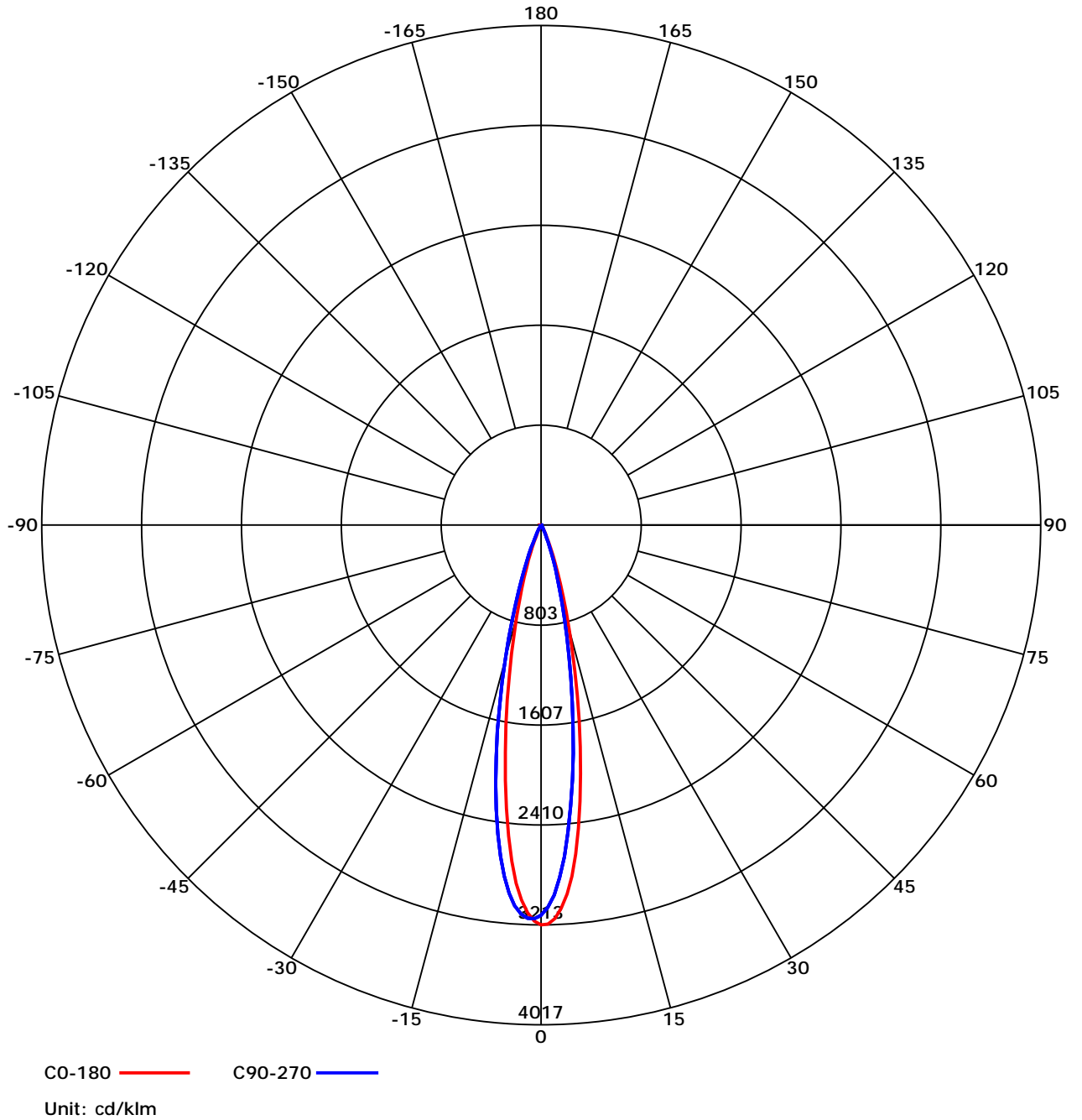
C Range: 0 - 360 Deg  
 C Interval: 45.0 Deg  
 Test Speed: High  
 Temperature: 6.38  
 Operators:  
 Test Date: 2022/11/24 15:29:44

G Range: 0 - 90 Deg  
 G Interval: 1.0 Deg  
 Test System: Huipu CPM-1800B Goniophotometer  
 Humidity: 1.33  
 Test Distance: 6.38 m  
 Remarks:

Report No.:

Test Time: 2022/11/24 15:29:44

## Luminous Intensity Distribution Curve



C Range: 0 - 360 Deg

C Interval: 45.0 Deg

Test Speed: High

Temperature: 6.38

Operators:

Test Date: 2022/11/24 15:29:44

G Range: 0 - 90 Deg

G Interval: 1.0 Deg

Test System: Huipu CPM-1800B Goniophotometer

Humidity: 1.33

Test Distance: 6.38 m

Remarks:

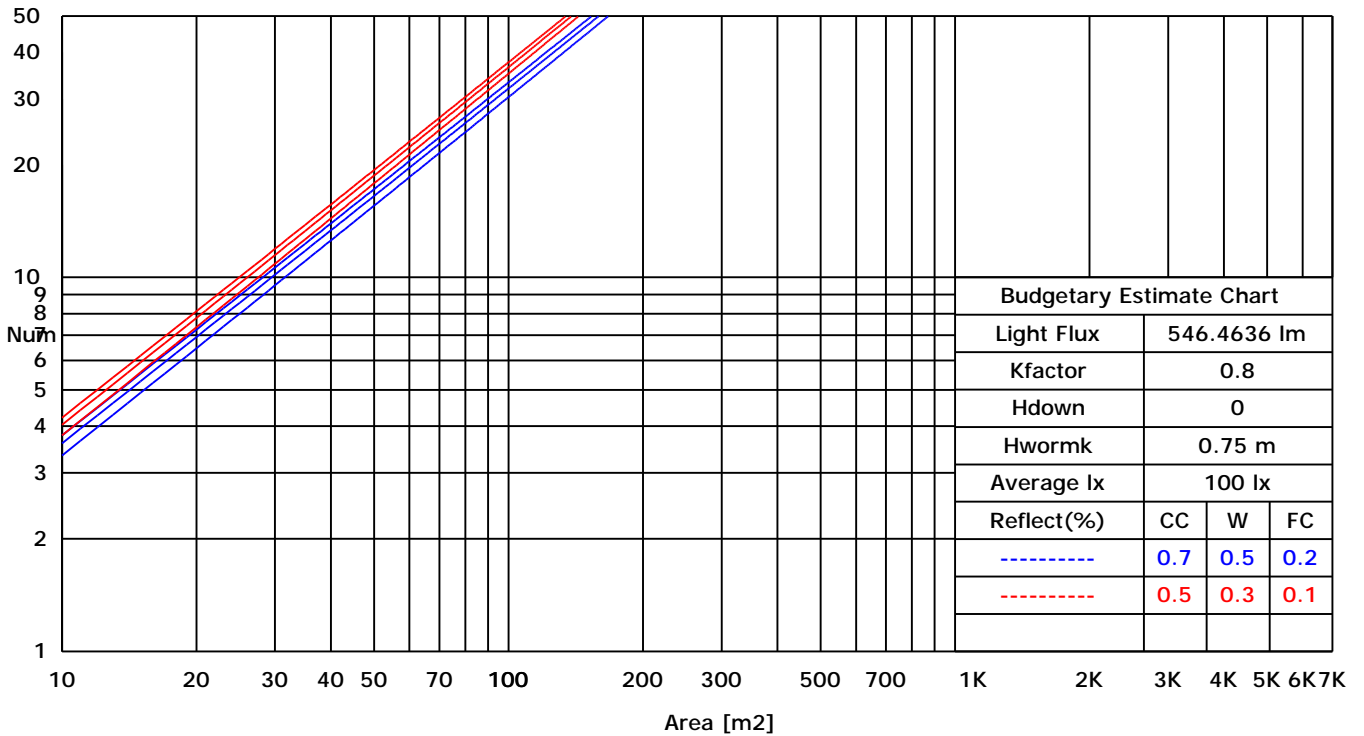
Report No.:

Test Time: 2022/11/24 15:29:44

### UTILIZATION FACTORS TABLE

RHOCC	80			70			50			30			10			0
RHOW	50	30	10	50	30	10	50	30	10	50	30	10	50	30	10	0
RCR	COEFFICIENTS OF UTILIZATION FOR RHOFC=20															
0	1.19	1.19	1.19	1.16	1.16	1.16	1.11	1.11	1.11	1.06	1.06	1.06	1.02	1.02	1.02	1.00
1	0.78	0.74	0.71	0.78	0.74	0.70	0.77	0.72	0.67	0.74	0.69	0.64	0.70	0.64	0.59	0.54
2	0.75	0.72	0.69	0.75	0.71	0.68	0.74	0.69	0.65	0.72	0.67	0.62	0.68	0.63	0.58	0.53
3	0.73	0.70	0.68	0.73	0.69	0.67	0.72	0.68	0.64	0.70	0.65	0.61	0.67	0.62	0.57	0.53
4	0.71	0.69	0.67	0.71	0.68	0.66	0.71	0.66	0.63	0.69	0.64	0.60	0.66	0.61	0.56	0.52
5	0.70	0.68	0.66	0.70	0.67	0.65	0.69	0.65	0.62	0.68	0.63	0.59	0.65	0.60	0.56	0.52
6	0.69	0.67	0.66	0.69	0.66	0.64	0.68	0.64	0.61	0.66	0.62	0.58	0.64	0.59	0.55	0.51
7	0.68	0.66	0.65	0.68	0.65	0.64	0.67	0.63	0.61	0.65	0.61	0.58	0.63	0.58	0.54	0.51
8	0.67	0.65	0.64	0.67	0.64	0.63	0.66	0.62	0.60	0.64	0.60	0.57	0.63	0.58	0.54	0.50
9	0.66	0.65	0.64	0.66	0.64	0.62	0.65	0.62	0.59	0.64	0.59	0.56	0.62	0.57	0.53	0.50
10	0.66	0.64	0.63	0.65	0.63	0.62	0.64	0.61	0.59	0.63	0.59	0.56	0.61	0.56	0.53	0.50

### LUMINAIRE BUDGETARY ESTIMATE DIAGRAM



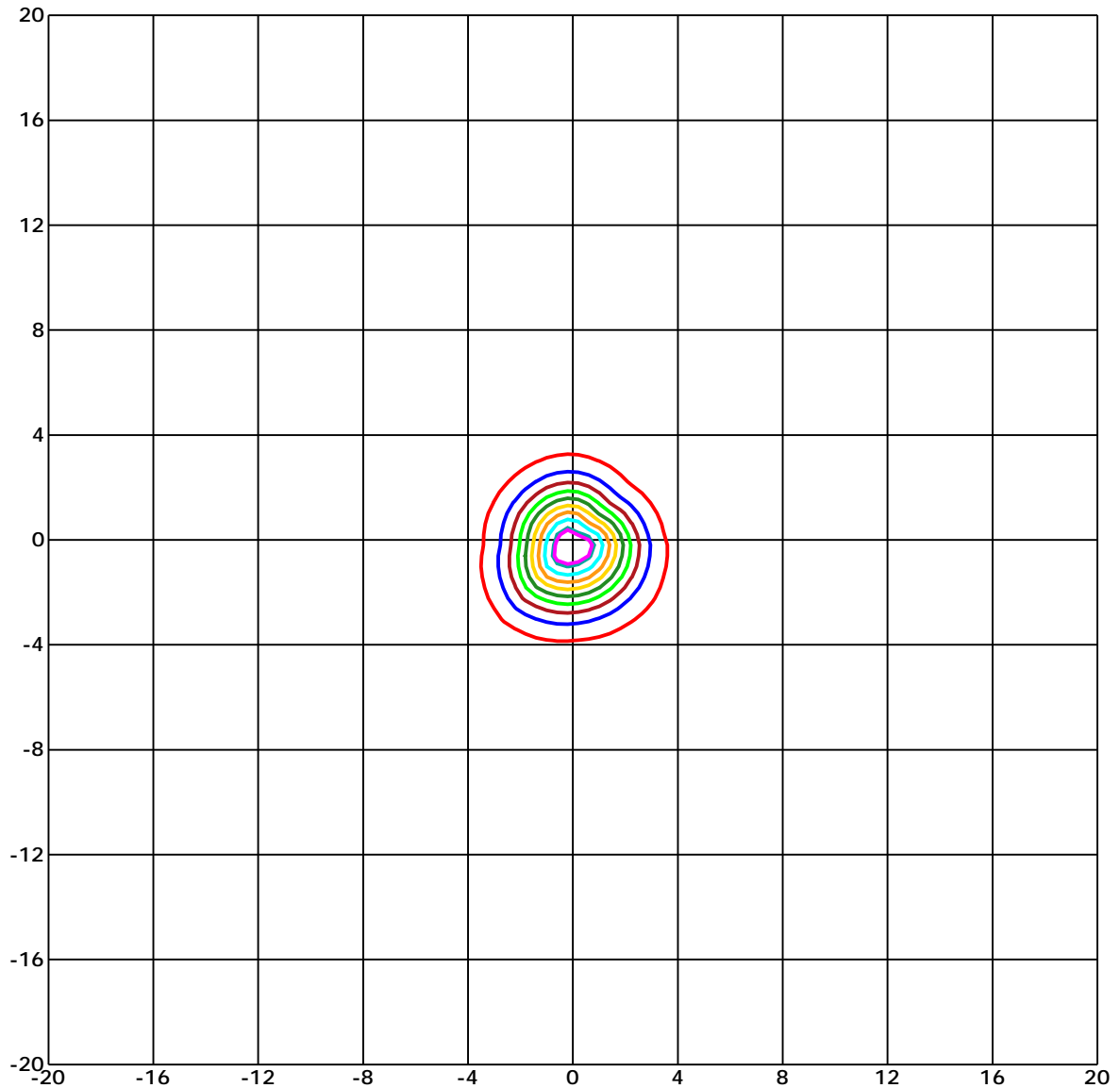
C Range: 0 - 360 Deg  
 C Interval: 45.0 Deg  
 Test Speed: High  
 Temperature: 6.38  
 Operators:  
 Test Date: 2022/11/24 15:29:44

G Range: 0 - 90 Deg  
 G Interval: 1.0 Deg  
 Test System: Huipu CPM-1800B Goniophotometer  
 Humidity: 1.33  
 Test Distance: 6.38 m  
 Remarks:

Report No.:

Test Time: 2022/11/24 15:29:44

## ISOLX DIAGRAM



Unit of illumination: lx      Height of plane: 10.0(m)/32.81(ft)

- |                               |                               |
|-------------------------------|-------------------------------|
| — 29.562(1%E <sub>max</sub> ) | — 16.066(1%E <sub>max</sub> ) |
| — 28.92(1%E <sub>max</sub> )  | — 12.853(0%E <sub>max</sub> ) |
| — 25.706(1%E <sub>max</sub> ) | — 9.64(0%E <sub>max</sub> )   |
| — 22.493(1%E <sub>max</sub> ) | — 6.427(0%E <sub>max</sub> )  |
| — 19.28(1%E <sub>max</sub> )  | — 3.213(0%E <sub>max</sub> )  |

C Range: 0 - 360 Deg

C Interval: 45.0 Deg

Test Speed: High

Temperature: 6.38

Operators:

Test Date: 2022/11/24 15:29:44

G Range: 0 - 90 Deg

G Interval: 1.0 Deg

Test System: Huipu CPM-1800B Goniophotometer

Humidity: 1.33

Test Distance: 6.38 m

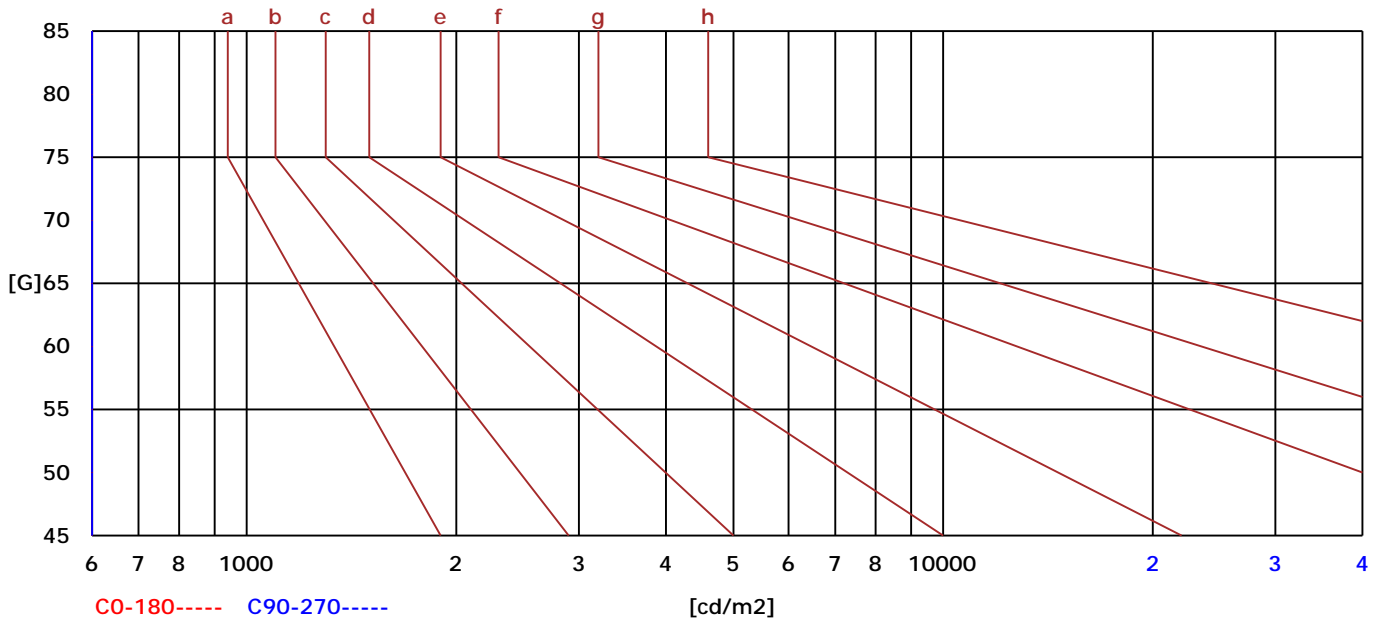
Remarks:

Report No.:

Test Time: 2022/11/24 15:29:44

### BRIGHT LIMIT DIAGRAM

C/G	45	50	55	60	65	70	75	80	85
C0	4	0	0	0	0	0	0	0	0
C90	10	0	0	0	0	0	0	0	0
Dazzle	Quality	Illuminance	---	---	---	---	---	---	---
1.15	A	2000	1000	500	<=300				
1.5	B		2000	1000	500	<=300			
1.85	C			2000	1000	500	<=300		
2.2	D				2000	1000	500	<=300	
2.55	E					2000	1000	500	<=300
---	---	a	b	c	d	e	f	g	h



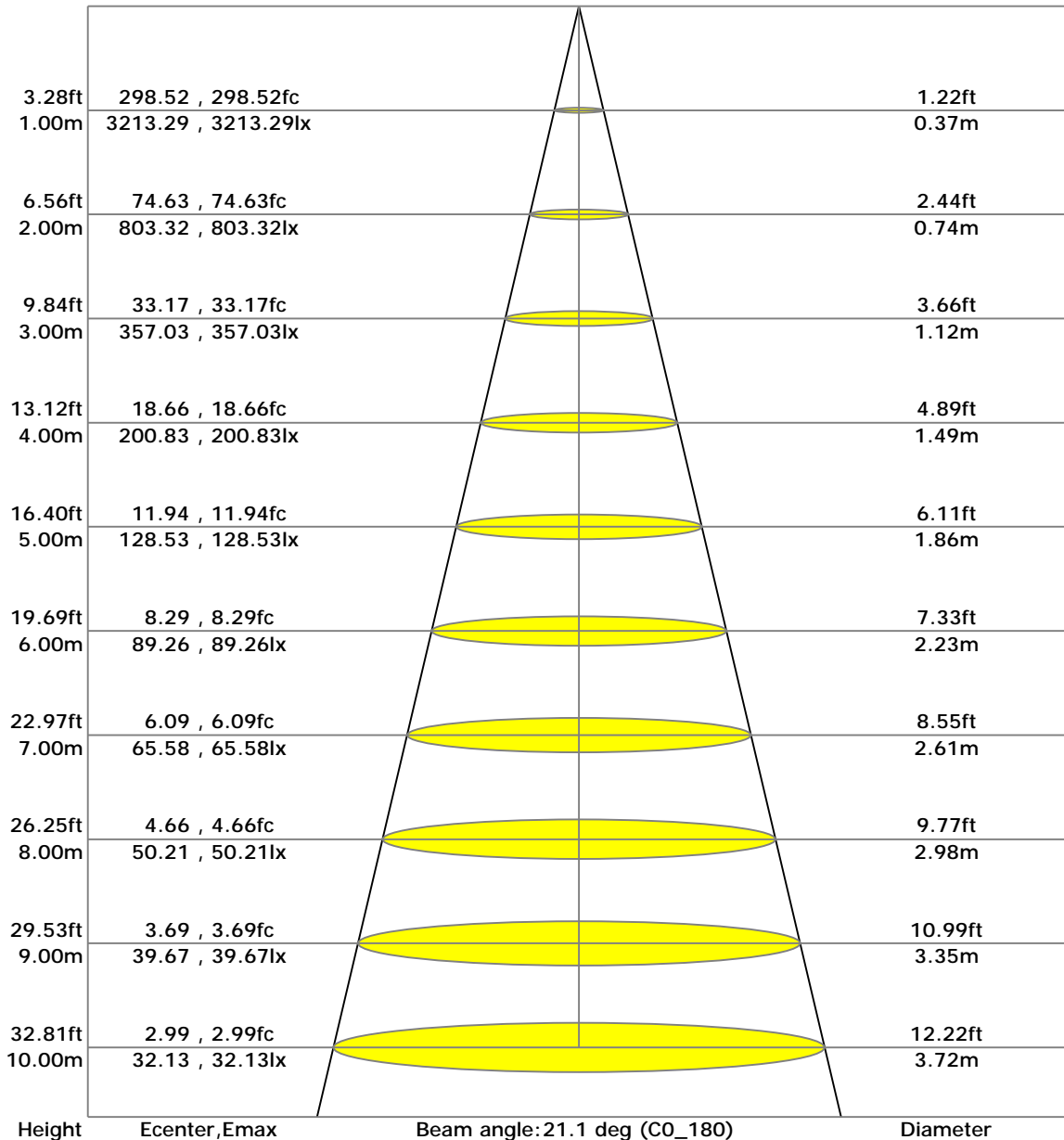
C Range: 0 - 360 Deg  
 C Interval: 45.0 Deg  
 Test Speed: High  
 Temperature: 6.38  
 Operators:  
 Test Date: 2022/11/24 15:29:44

G Range: 0 - 90 Deg  
 G Interval: 1.0 Deg  
 Test System: Huipu CPM-1800B Goniophotometer  
 Humidity: 1.33  
 Test Distance: 6.38 m  
 Remarks:

Report No.:

Test Time: 2022/11/24 15:29:44

## LX-DISTANCE DIAGRAM



C Range: 0 - 360 Deg  
 C Interval: 45.0 Deg  
 Test Speed: High  
 Temperature: 6.38  
 Operators:  
 Test Date: 2022/11/24 15:29:44

G Range: 0 - 90 Deg  
 G Interval: 1.0 Deg  
 Test System: Huipu CPM-1800B Goniophotometer  
 Humidity: 1.33  
 Test Distance: 6.38 m  
 Remarks:

Report No.:

Test Time: 2022/11/24 15:29:44

## UGR(Unified Glare Rating) TABLE

RHOCC		70	70	50	50	30	70	70	50	50	30
RHOW		50	30	50	30	30	50	30	50	30	30
RHOF		20	20	20	20	20	20	20	20	20	20
Room Size X Y		Viewed Endwise					Viewed Crosswise				
2H	2H	1.05	1.11	1.25	1.30	1.54	1.05	1.11	1.25	1.30	1.54
	3H	1.03	1.09	1.23	1.28	1.53	1.03	1.09	1.23	1.28	1.53
	4H	1.01	1.08	1.22	1.28	1.53	1.01	1.08	1.22	1.28	1.53
	6H	1.00	1.07	1.22	1.27	1.52	1.00	1.07	1.22	1.27	1.52
	8H	0.99	1.06	1.21	1.26	1.52	0.99	1.06	1.21	1.26	1.52
	12H	0.98	1.05	1.21	1.26	1.52	0.98	1.05	1.21	1.26	1.52
4H	2H	1.01	1.08	1.22	1.28	1.53	1.01	1.08	1.22	1.28	1.53
	3H	0.98	1.05	1.21	1.26	1.52	0.98	1.05	1.21	1.26	1.52
	4H	0.97	1.04	1.20	1.25	1.51	0.97	1.04	1.20	1.25	1.51
	6H	0.94	1.02	1.18	1.24	1.50	0.94	1.02	1.18	1.24	1.50
	8H	0.93	1.00	1.18	1.23	1.50	0.93	1.00	1.18	1.23	1.50
	12H	0.92	0.99	1.17	1.22	1.50	0.92	0.99	1.17	1.22	1.50
8H	4H	0.99	1.06	1.21	1.26	1.52	0.99	1.06	1.21	1.26	1.52
	6H	0.91	0.98	1.16	1.22	1.49	0.91	0.98	1.16	1.22	1.49
	8H	0.89	0.96	1.16	1.21	1.49	0.89	0.96	1.16	1.21	1.49
	12H	0.88	0.94	1.15	1.20	1.48	0.88	0.94	1.15	1.20	1.48
12H	4H	0.92	0.99	1.17	1.22	1.50	0.92	0.99	1.17	1.22	1.50
	6H	0.89	0.96	1.16	1.21	1.49	0.89	0.96	1.16	1.21	1.49

C Range: 0 - 360 Deg  
 C Interval: 45.0 Deg  
 Test Speed: High  
 Temperature: 6.38  
 Operators:  
 Test Date: 2022/11/24 15:29:44

G Range: 0 - 90 Deg  
 G Interval: 1.0 Deg  
 Test System: Huipu CPM-1800B Goniophotometer  
 Humidity: 1.33  
 Test Distance: 6.38 m  
 Remarks:

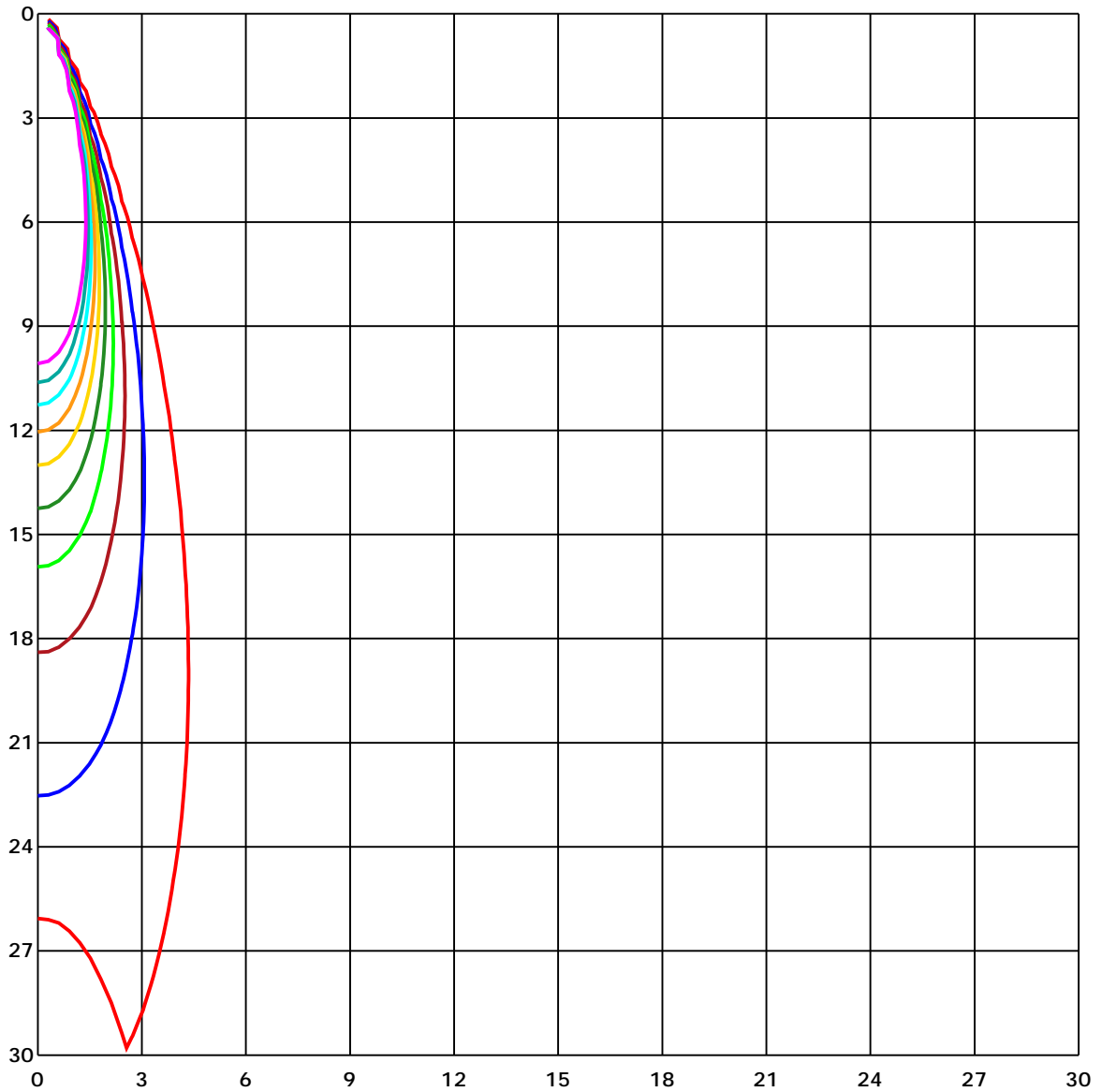




Report No.:

Test Time: 2022/11/24 15:29:44

## SPACE ISOLX DIAGRAM



Unit of illumination: lx

- |          |          |
|----------|----------|
| — 31.659 | — 15.829 |
| — 28.493 | — 12.663 |
| — 25.327 | — 9.498  |
| — 22.161 | — 6.332  |
| — 18.995 | — 3.166  |

C Range: 0 - 360 Deg

C Interval: 45.0 Deg

Test Speed: High

Temperature: 6.38

Operators:

Test Date: 2022/11/24 15:29:44

G Range: 0 - 90 Deg

G Interval: 1.0 Deg

Test System: Huipu CPM-1800B Goniophotometer

Humidity: 1.33

Test Distance: 6.38 m

Remarks:

Report No.:

Test Time: 2022/11/24 15:29:44

## LUMINOUS DISTRIBUTION INTENSITY DATA

Gamma/C	C0	C45	C90	C135	C180	C225	C270	C315	C360	
G0	3213.29	3082.39	3134.9	3166.57	3213.29	3082.39	3134.9	3166.57	3213.29	
G1	3206.8	2982.78	3073.62	3113.41	3182.98	3148.17	3165.0	3183.19	3206.8	
G2	3163.16	2853.07	2974.55	3025.55	3118.77	3178.05	3161.65	3163.7	3163.16	
G3	3083.2	2684.43	2837.58	2905.2	3017.32	3174.15	3129.54	3112.44	3083.2	
G4	2971.74	2485.53	2670.9	2741.92	2884.9	3138.96	3065.55	3031.39	2971.74	
G5	2832.28	2270.39	2476.87	2558.07	2711.99	3073.57	2970.44	2919.17	2832.28	
G6	2657.47	2042.2	2270.66	2348.67	2512.06	2973.03	2838.67	2774.08	2657.47	
G7	2455.97	1823.76	2059.74	2140.03	2293.89	2834.55	2683.51	2597.59	2455.97	
G8	2241.43	1613.22	1852.51	1929.22	2072.03	2675.34	2504.75	2405.03	2241.43	
G9	2022.61	1409.18	1639.32	1712.46	1848.29	2492.62	2312.24	2200.66	2022.61	
G10	1809.9	1223.39	1440.31	1508.04	1632.82	2294.43	2109.71	1993.21	1809.9	
G11	1599.37	1043.65	1254.78	1309.57	1428.62	2093.26	1899.88	1787.71	1599.37	
G12	1398.25	883.13	1079.38	1128.7	1235.02	1886.4	1692.7	1589.73	1398.25	
G13	1208.93	740.7	917.35	963.04	1057.83	1684.52	1486.38	1396.95	1208.93	
G14	1033.64	618.13	772.7	812.27	899.97	1493.8	1294.85	1218.46	1033.64	
G15	873.39	514.68	646.61	683.21	760.95	1312.44	1115.06	1050.15	873.39	
G16	729.87	425.84	539.74	568.82	640.93	1145.86	949.45	896.61	729.87	
G17	606.77	349.35	450.2	472.61	532.81	994.55	803.07	760.95	606.77	
G18	496.76	281.89	371.65	391.19	440.84	852.55	668.1	642.39	496.76	
G19	405.97	223.31	301.0	318.65	363.37	720.83	554.58	541.8	405.97	
G20	329.42	174.7	235.98	254.28	297.54	602.92	457.78	459.73	329.42	
G21	265.87	135.99	182.87	196.84	239.45	498.82	379.23	393.03	265.87	
G22	208.81	107.46	144.49	149.31	186.28	411.12	310.64	333.43	208.81	
G23	161.44	86.08	115.09	114.39	139.73	339.01	250.27	276.91	161.44	
G24	125.06	69.19	92.63	88.35	105.08	278.26	197.6	220.45	125.06	
G25	98.8	54.84	75.2	70.27	80.99	224.07	152.94	173.18	98.8	
G26	79.15	41.25	60.36	56.09	64.31	173.83	117.69	136.48	79.15	
G27	63.94	29.83	46.5	44.66	52.57	133.12	92.3	108.82	63.94	
G28	50.89	21.49	35.24	34.54	43.42	102.75	73.79	88.95	50.89	
G29	39.47	16.19	26.96	25.99	35.84	81.75	59.12	73.14	39.47	
G30	29.45	12.88	21.22	19.65	29.5	66.26	47.48	59.88	29.45	
G31	22.14	10.83	18.03	15.32	24.36	54.25	37.79	47.97	22.14	
G32	17.0	8.72	15.75	12.34	20.14	44.88	28.85	37.41	17.0	
G33	13.32	6.71	13.64	10.34	17.16	36.54	21.98	28.8	13.32	
G34	11.04	5.14	11.64	8.5	14.94	29.99	17.27	22.68	11.04	
G35	9.2	4.22	9.85	6.93	13.21	24.63	13.53	18.68	9.2	
G36	7.31	3.52	8.66	5.47	11.31	20.52	11.1	16.19	7.31	

C Range: 0 - 360 Deg

C Interval: 45.0 Deg

Test Speed: High

Temperature: 6.38

Operators:

Test Date: 2022/11/24 15:29:44

G Range: 0 - 90 Deg

G Interval: 1.0 Deg

Test System: Huipu CPM-1800B Goniophotometer

Humidity: 1.33

Test Distance: 6.38 m

Remarks:

Report No.:

Test Time: 2022/11/24 15:29:44

## LUMINOUS DISTRIBUTION INTENSITY DATA(Continue 1)

Gamma/C	C0	C45	C90	C135	C180	C225	C270	C315	C360
G37	5.63	2.92	7.58	4.55	9.69	17.7	9.37	14.18	5.63
G38	4.93	2.38	6.77	3.68	8.5	15.43	7.74	11.91	4.93
G39	4.01	1.89	6.01	3.03	7.42	13.8	5.9	9.74	4.01
G40	3.36	1.46	5.25	2.44	6.66	11.91	4.93	8.77	3.36
G41	2.92	1.08	4.71	1.84	5.79	9.74	4.06	7.53	2.92
G42	2.38	0.76	4.28	1.41	5.14	8.5	3.46	6.66	2.38
G43	1.95	0.49	3.63	0.92	4.66	7.36	2.76	5.9	1.95
G44	1.52	0.22	3.25	0.6	4.22	6.55	2.38	5.2	1.52
G45	1.19	0.11	2.92	0.27	3.63	5.74	1.89	4.66	1.19
G46	0.81	0.0	2.65	0.11	2.98	5.03	1.41	4.11	0.81
G47	0.6	0.0	2.44	0.0	2.82	4.49	0.87	3.63	0.6
G48	0.43	0.0	2.33	0.0	2.6	3.95	0.54	3.03	0.43
G49	0.27	0.0	2.22	0.0	2.49	3.46	0.27	2.71	0.27
G50	0.22	0.0	2.11	0.0	2.33	3.03	0.11	2.71	0.22
G51	0.11	0.0	2.11	0.0	2.22	2.71	0.0	2.54	0.11
G52	0.05	0.0	1.89	0.0	2.17	2.38	0.0	2.33	0.05
G53	0.05	0.0	1.79	0.0	2.06	2.33	0.0	2.22	0.05
G54	0.0	0.0	1.68	0.0	2.0	2.22	0.0	2.11	0.0
G55	0.0	0.0	1.62	0.0	1.84	2.17	0.0	1.95	0.0
G56	0.0	0.0	1.57	0.0	1.79	2.06	0.0	1.89	0.0
G57	0.0	0.0	1.46	0.0	1.68	1.95	0.0	1.79	0.0
G58	0.0	0.0	1.46	0.0	1.62	1.79	0.0	1.46	0.0
G59	0.0	0.0	1.41	0.0	1.57	1.73	0.0	1.68	0.0
G60	0.0	0.0	1.35	0.0	1.52	1.68	0.0	1.62	0.0
G61	0.0	0.0	1.3	0.0	1.41	1.62	0.0	1.57	0.0
G62	0.0	0.0	1.25	0.0	1.35	1.57	0.0	1.52	0.0
G63	0.0	0.0	1.25	0.0	1.35	1.52	0.0	1.41	0.0
G64	0.0	0.0	1.19	0.0	1.25	1.46	0.0	1.35	0.0
G65	0.0	0.0	1.14	0.0	1.3	1.41	0.0	1.3	0.0
G66	0.0	0.0	1.3	0.0	1.19	1.3	0.0	1.41	0.0
G67	0.0	0.0	1.08	0.0	1.19	1.25	0.0	1.19	0.0
G68	0.0	0.0	1.25	0.0	1.14	1.25	0.0	1.19	0.0
G69	0.11	0.0	1.03	0.0	1.08	1.14	0.0	1.14	0.11
G70	0.11	0.0	0.97	0.0	1.03	1.14	0.0	1.14	0.11
G71	0.11	0.0	0.92	0.0	0.97	1.19	0.0	1.08	0.11
G72	0.11	0.0	0.87	0.0	0.97	1.14	0.0	1.08	0.11
G73	0.11	0.0	0.87	0.0	0.92	1.08	0.0	1.08	0.11

C Range: 0 - 360 Deg

C Interval: 45.0 Deg

Test Speed: High

Temperature: 6.38

Operators:

Test Date: 2022/11/24 15:29:44

G Range: 0 - 90 Deg

G Interval: 1.0 Deg

Test System: Huipu CPM-1800B Goniophotometer

Humidity: 1.33

Test Distance: 6.38 m

Remarks:

