

Report No.:

Test Time: 2022/11/24 15:47:35

LUMINAIRE PHOTOMETRIC TEST REPORT

Luminaire Property

Manufacturer: NOROECOR
 Luminaire Type: 6397
 Lamp Type:
 Luminous Width: 0 mm
 Luminous Length: 0 mm
 Luminous Height: 0 mm

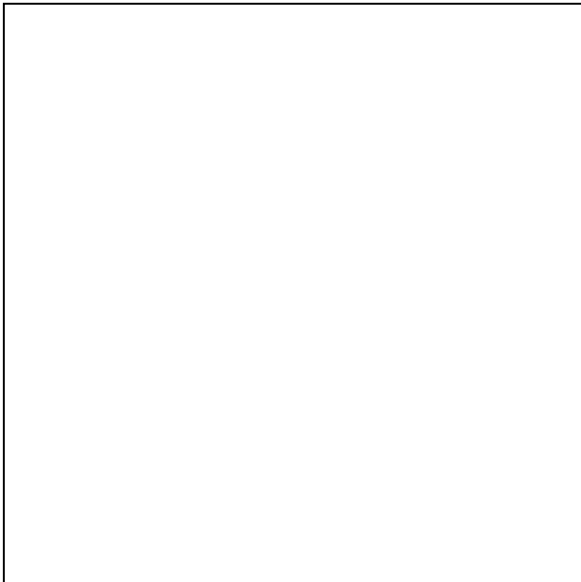
Voltage(V): 219.70 V
 Current(A): 0.0370 A
 Power(W): 4.25 W
 Power Factor: 0.5220
 Lamp Luminous Flux: 343.82

Photometric Results

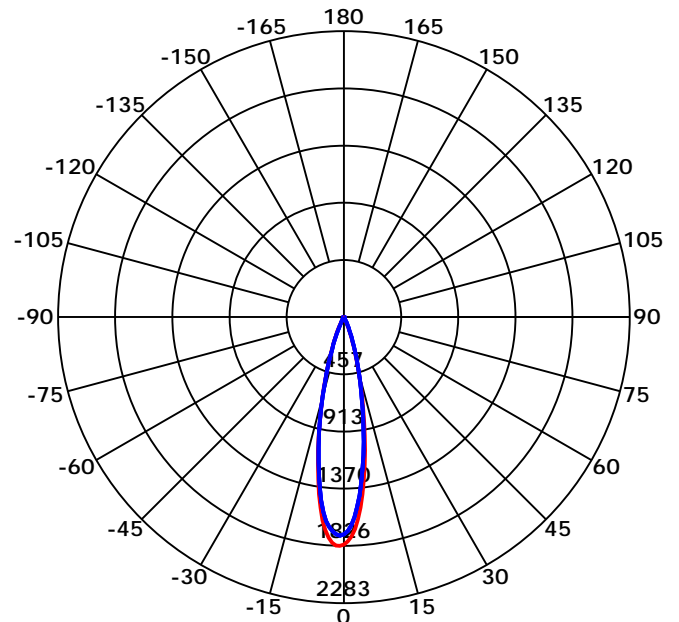
CIE Class: Direct
 Luminaire Luminous Flux: 343.8201 lm
 Downward Ratio: 100.00%
 Luminaire Efficacy Rating(LER): 80.90 lm/W
 Beam Angle(50%) C0-180,C90-270: 22.9,23.1
 Field Angle(10%) C0-180,C90-270: 42.7,43.2
 S/MH C0-180,C90-270: 0.389,0.389

Max. Intensity: 1826.03 cd
 Max.Intensity Angle: C=180 Gamma=1
 Upward Ratio: 0.00%
 Efficacy: 100.00%
 Center Intensity: 1814.82 cd
 Effective Luminous Flux: 304.47 lm
 ERP(φ use)(120deg): 342.57 lm

Picture of Luminaire



Luminous Intensity Distribution Curve



Beam Angle(50%) C0-180,C90-270: 22.9 deg,23.1 deg

C0-180 — C90-270

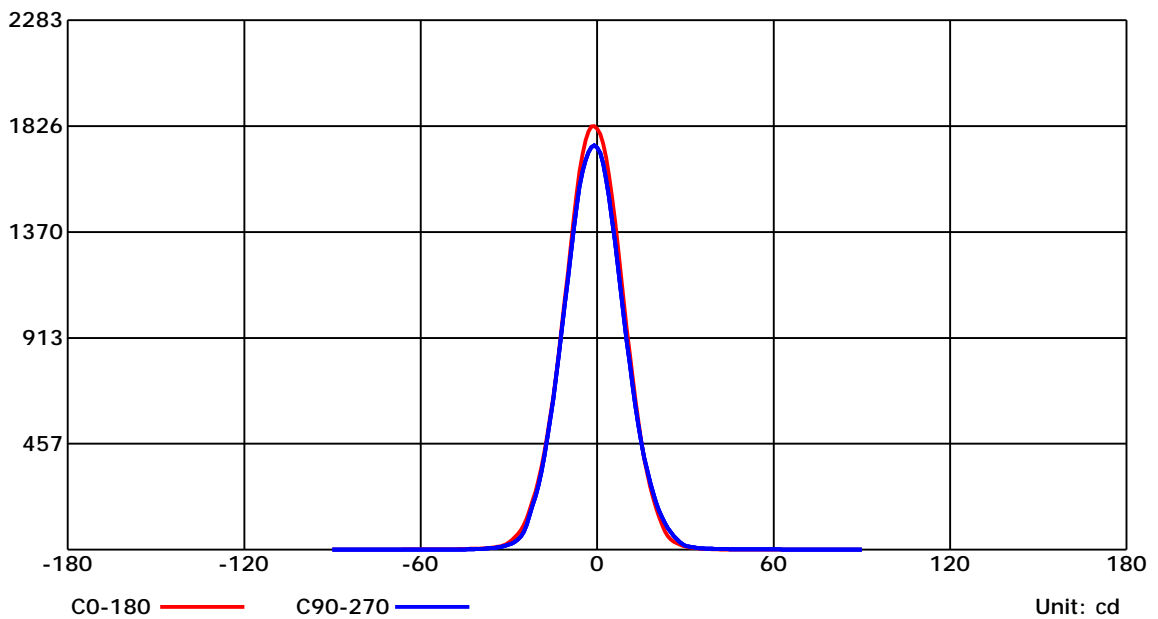
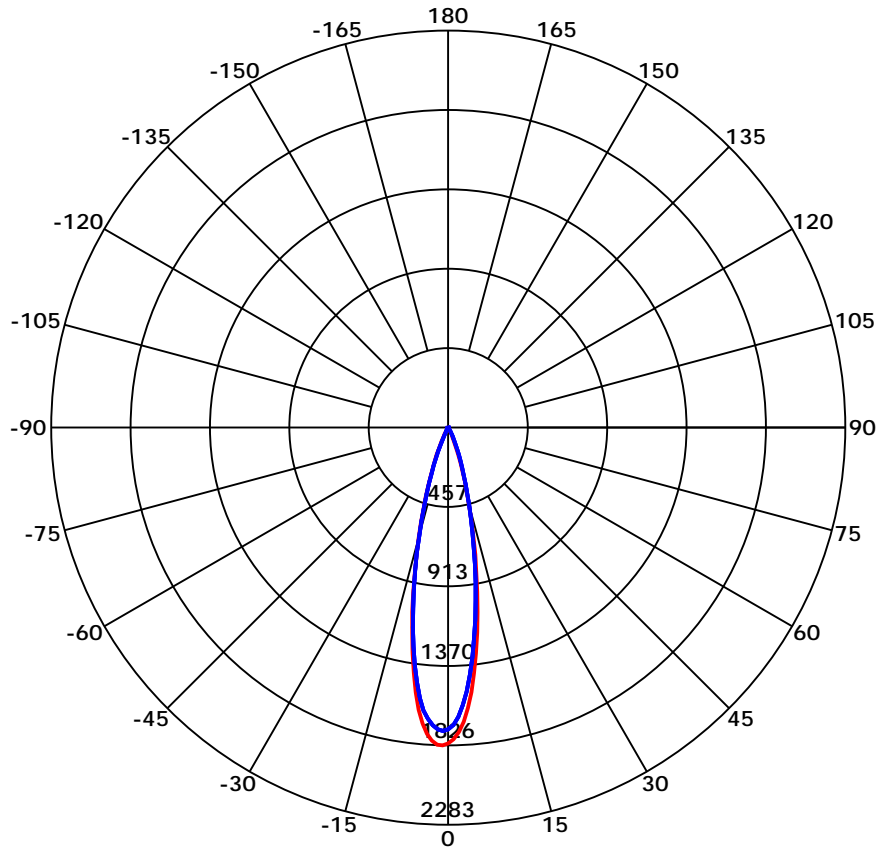
C Range: 0 - 360 Deg
 C Interval: 45.0 Deg
 Test Speed: High
 Temperature: 6.38
 Operators:
 Test Date: 2022/11/24 15:47:35

G Range: 0 - 90 Deg
 G Interval: 1.0 Deg
 Test System: Huipu CPM-1800B Goniophotometer
 Humidity: 1.37
 Test Distance: 6.38 m
 Remarks:

Report No.:

Test Time: 2022/11/24 15:47:35

Luminous Intensity Distribution Curve



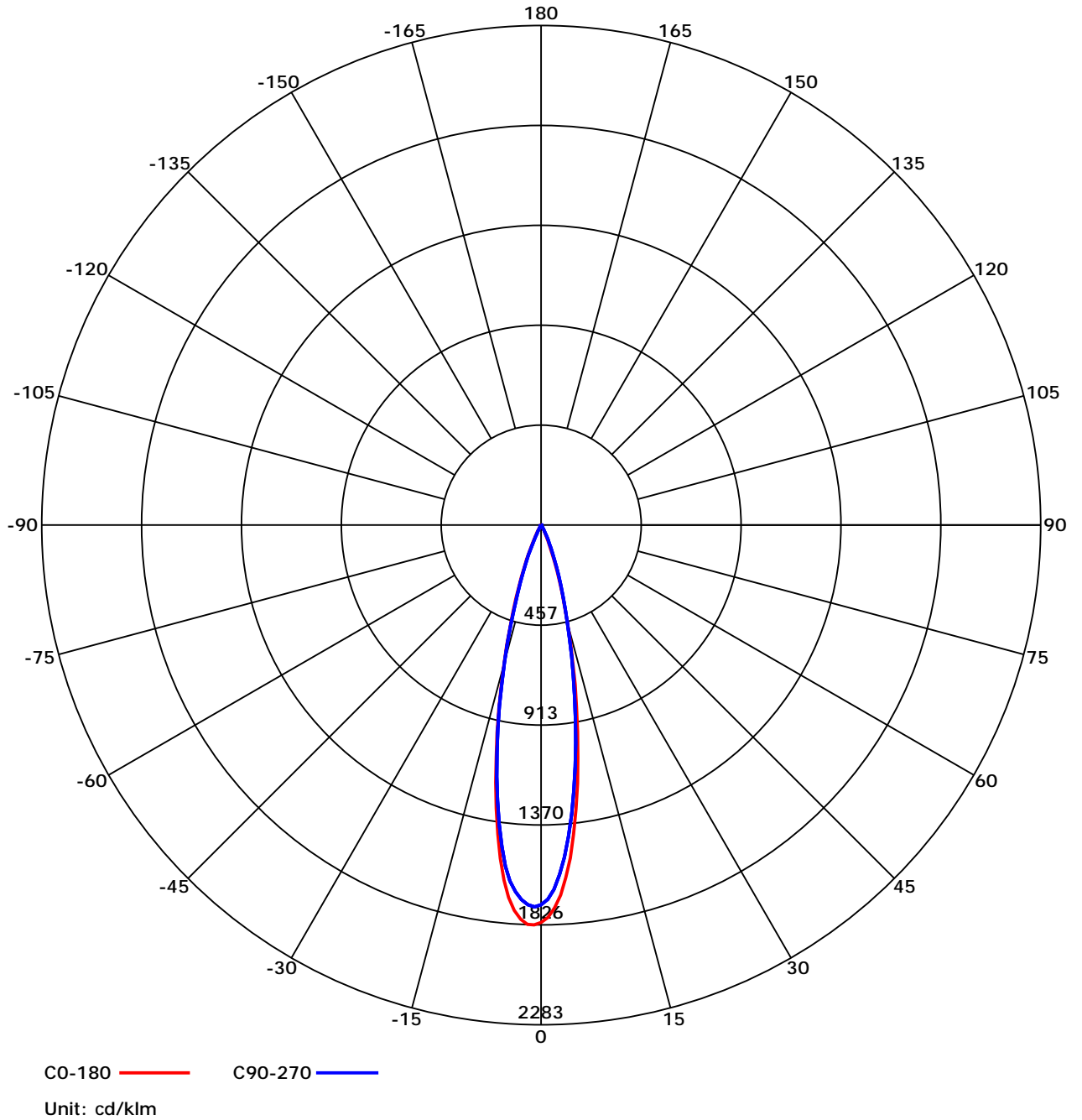
C Range: 0 - 360 Deg
 C Interval: 45.0 Deg
 Test Speed: High
 Temperature: 6.38
 Operators:
 Test Date: 2022/11/24 15:47:35

G Range: 0 - 90 Deg
 G Interval: 1.0 Deg
 Test System: Huipu CPM-1800B Goniophotometer
 Humidity: 1.37
 Test Distance: 6.38 m
 Remarks:

Report No.:

Test Time: 2022/11/24 15:47:35

Luminous Intensity Distribution Curve



C Range: 0 - 360 Deg

C Interval: 45.0 Deg

Test Speed: High

Temperature: 6.38

Operators:

Test Date: 2022/11/24 15:47:35

G Range: 0 - 90 Deg

G Interval: 1.0 Deg

Test System: Huipu CPM-1800B Goniophotometer

Humidity: 1.37

Test Distance: 6.38 m

Remarks:

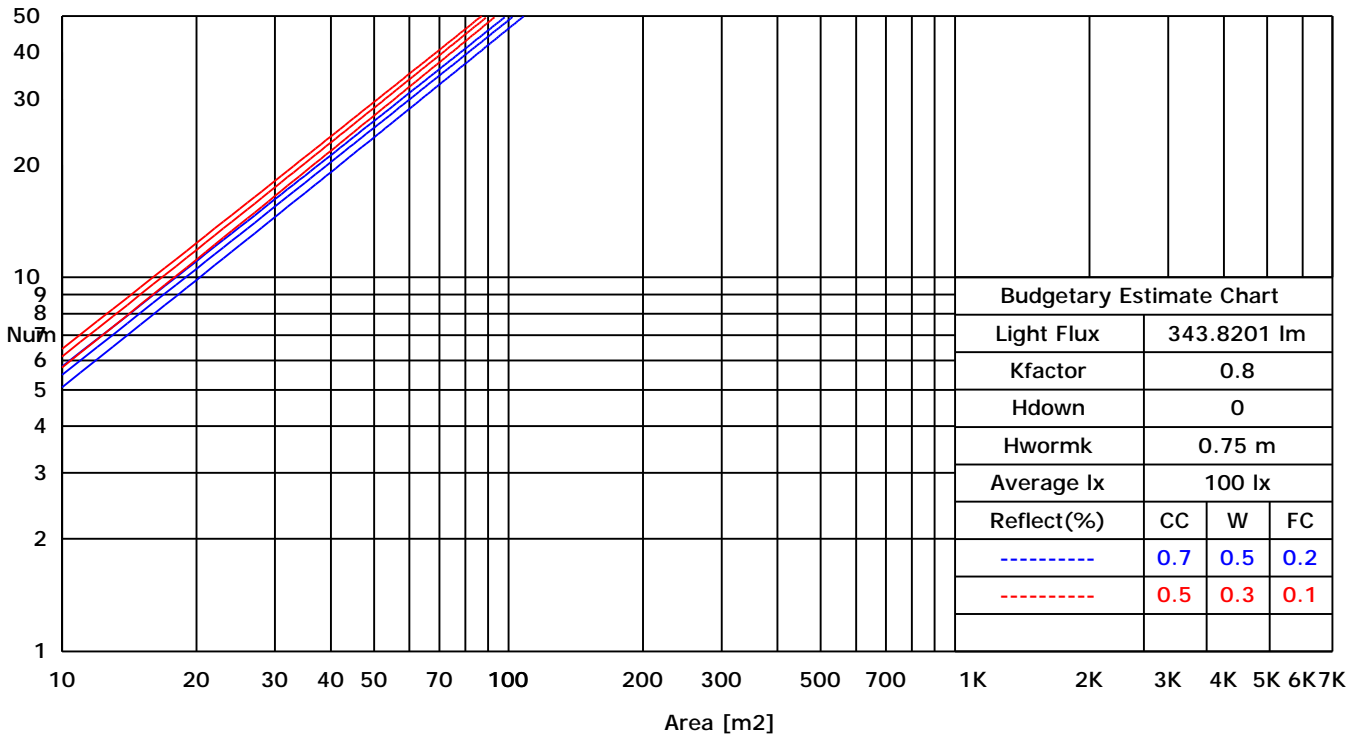
Report No.:

Test Time: 2022/11/24 15:47:35

UTILIZATION FACTORS TABLE

RHOCC	80			70			50			30			10			0
RHOW	50	30	10	50	30	10	50	30	10	50	30	10	50	30	10	0
RCR	COEFFICIENTS OF UTILIZATION FOR RHOFC=20															
0	1.19	1.19	1.19	1.16	1.16	1.16	1.11	1.11	1.11	1.06	1.06	1.06	1.02	1.02	1.02	1.00
1	0.82	0.78	0.75	0.82	0.77	0.73	0.80	0.75	0.71	0.77	0.72	0.67	0.72	0.67	0.62	0.57
2	0.79	0.75	0.73	0.79	0.75	0.72	0.77	0.73	0.69	0.75	0.70	0.65	0.71	0.66	0.61	0.56
3	0.76	0.74	0.72	0.76	0.73	0.70	0.75	0.71	0.67	0.73	0.68	0.64	0.70	0.65	0.60	0.56
4	0.75	0.72	0.71	0.75	0.71	0.69	0.73	0.69	0.66	0.71	0.67	0.63	0.69	0.64	0.59	0.55
5	0.73	0.71	0.70	0.73	0.70	0.68	0.72	0.68	0.65	0.70	0.66	0.62	0.68	0.63	0.58	0.55
6	0.72	0.70	0.69	0.72	0.69	0.67	0.71	0.67	0.64	0.69	0.65	0.61	0.67	0.62	0.58	0.54
7	0.71	0.69	0.68	0.71	0.68	0.67	0.70	0.66	0.64	0.68	0.64	0.60	0.66	0.61	0.57	0.54
8	0.70	0.69	0.68	0.70	0.68	0.66	0.69	0.65	0.63	0.67	0.63	0.60	0.65	0.60	0.56	0.53
9	0.69	0.68	0.67	0.69	0.67	0.65	0.68	0.64	0.62	0.66	0.62	0.59	0.64	0.59	0.56	0.53
10	0.69	0.67	0.66	0.68	0.66	0.65	0.67	0.64	0.62	0.65	0.61	0.59	0.63	0.59	0.55	0.52

LUMINAIRE BUDGETARY ESTIMATE DIAGRAM



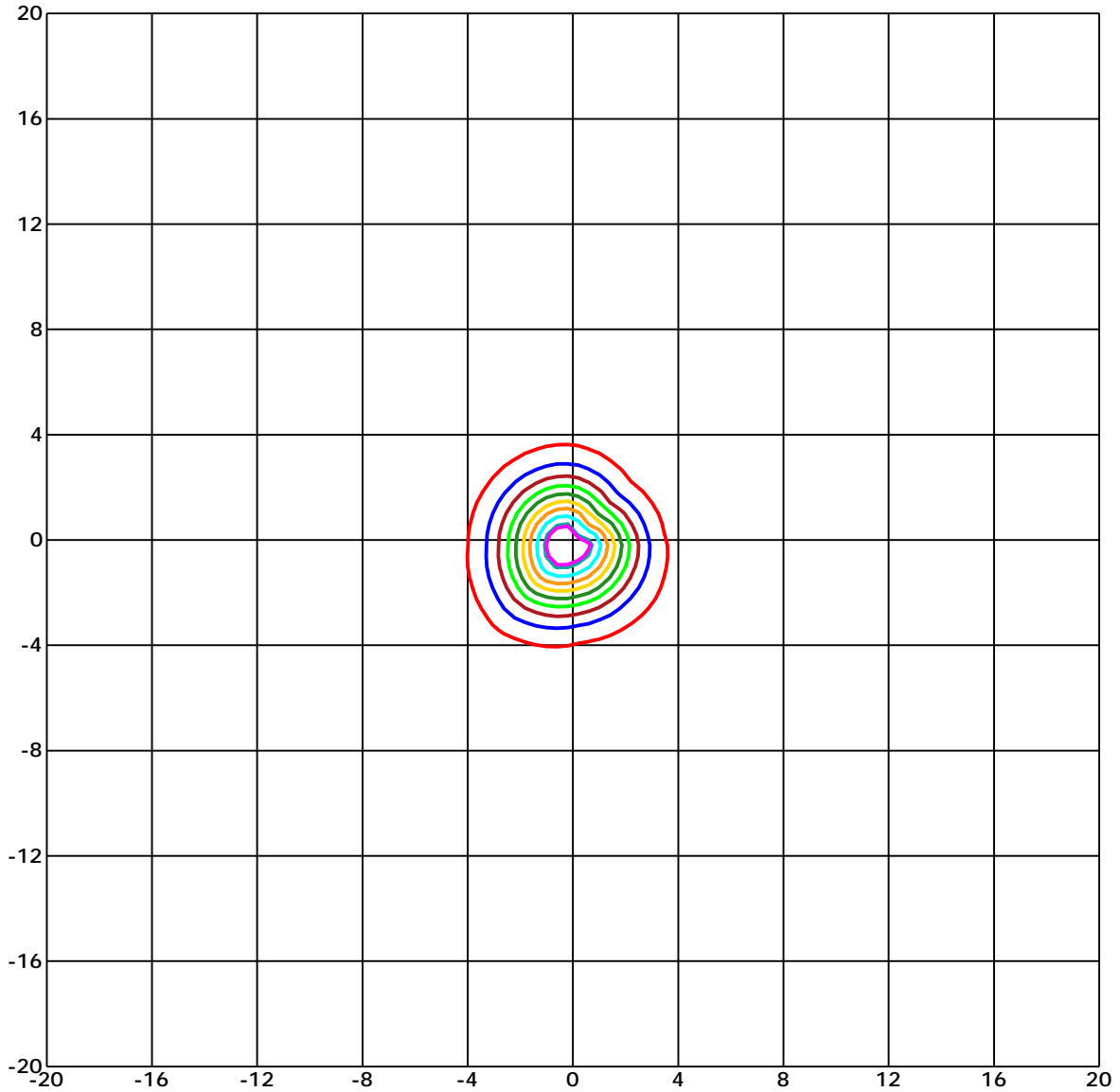
C Range: 0 - 360 Deg
 C Interval: 45.0 Deg
 Test Speed: High
 Temperature: 6.38
 Operators:
 Test Date: 2022/11/24 15:47:35

G Range: 0 - 90 Deg
 G Interval: 1.0 Deg
 Test System: Huipu CPM-1800B Goniophotometer
 Humidity: 1.37
 Test Distance: 6.38 m
 Remarks:

Report No.:

Test Time: 2022/11/24 15:47:35

ISOLX DIAGRAM



Unit of illumination: lx Height of plane: 10.0(m)/32.81(ft)

- | | |
|------------------|-----------------|
| — 16.792(1%Emax) | — 9.126(0%Emax) |
| — 16.427(1%Emax) | — 7.301(0%Emax) |
| — 14.602(1%Emax) | — 5.476(0%Emax) |
| — 12.776(1%Emax) | — 3.65(0%Emax) |
| — 10.951(1%Emax) | — 1.825(0%Emax) |

C Range: 0 - 360 Deg
 C Interval: 45.0 Deg
 Test Speed: High
 Temperature: 6.38
 Operators:
 Test Date: 2022/11/24 15:47:35

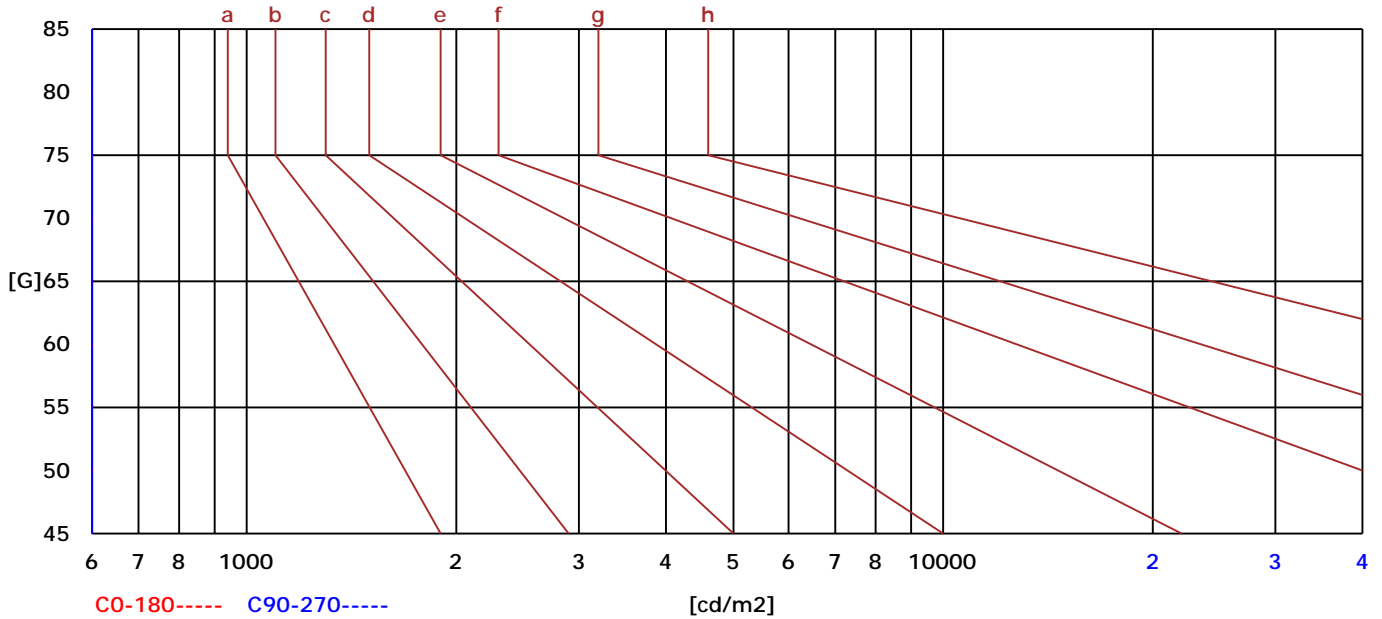
G Range: 0 - 90 Deg
 G Interval: 1.0 Deg
 Test System: Huipu CPM-1800B Goniophotometer
 Humidity: 1.37
 Test Distance: 6.38 m
 Remarks:

Report No.:

Test Time: 2022/11/24 15:47:35

BRIGHT LIMIT DIAGRAM

C/G	45	50	55	60	65	70	75	80	85
C0	0	0	0	0	0	0	0	0	0
C90	2	0	0	0	0	0	0	0	0
Dazzle	Quality	Illuminance	---	---	---	---	---	---	---
1.15	A	2000	1000	500	<=300				
1.5	B		2000	1000	500	<=300			
1.85	C			2000	1000	500	<=300		
2.2	D				2000	1000	500	<=300	
2.55	E					2000	1000	500	<=300
---	---	a	b	c	d	e	f	g	h



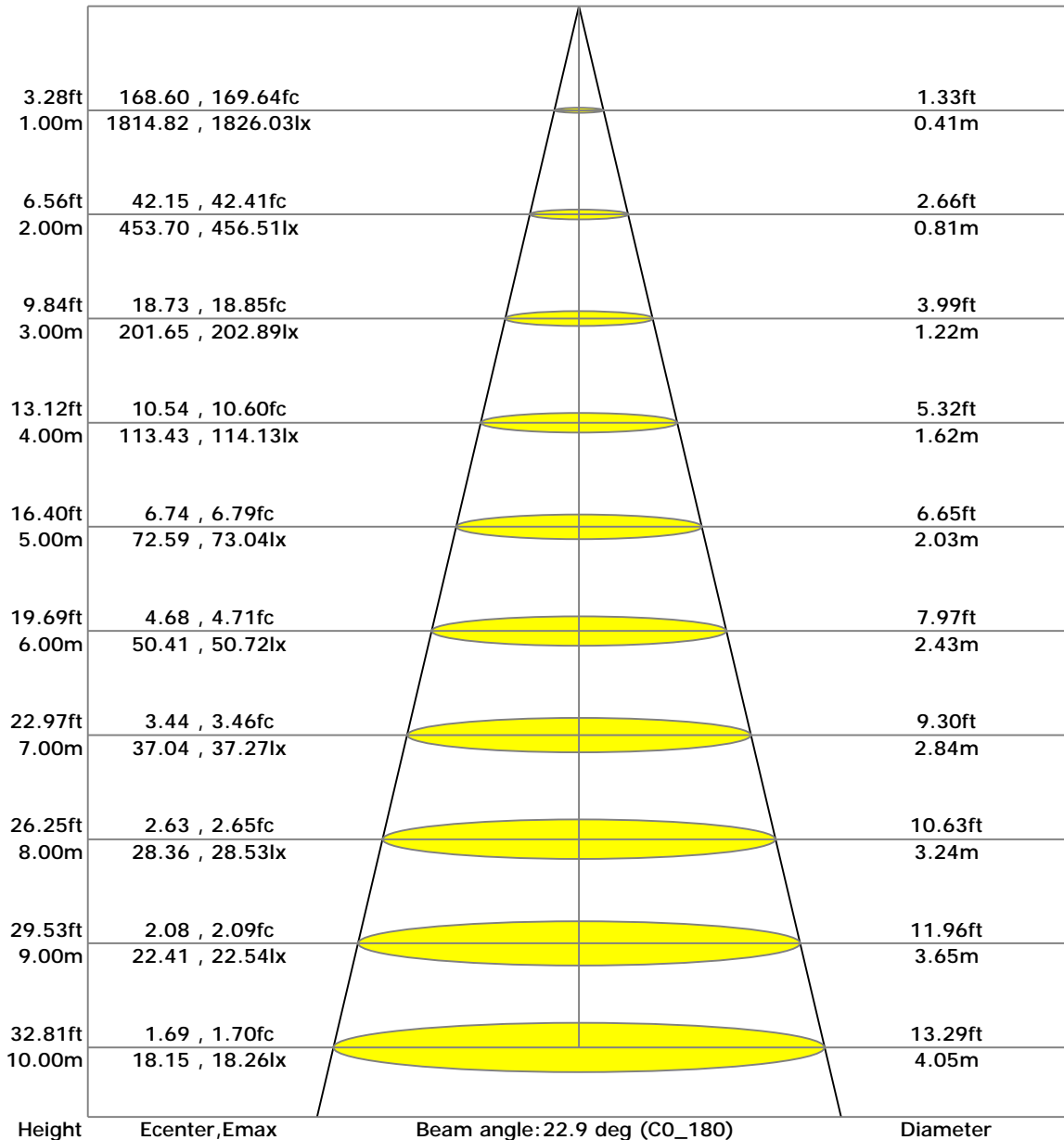
C Range: 0 - 360 Deg
 C Interval: 45.0 Deg
 Test Speed: High
 Temperature: 6.38
 Operators:
 Test Date: 2022/11/24 15:47:35

G Range: 0 - 90 Deg
 G Interval: 1.0 Deg
 Test System: Huipu CPM-1800B Goniophotometer
 Humidity: 1.37
 Test Distance: 6.38 m
 Remarks:

Report No.:

Test Time: 2022/11/24 15:47:35

LX-DISTANCE DIAGRAM



C Range: 0 - 360 Deg
 C Interval: 45.0 Deg
 Test Speed: High
 Temperature: 6.38
 Operators:
 Test Date: 2022/11/24 15:47:35

G Range: 0 - 90 Deg
 G Interval: 1.0 Deg
 Test System: Huipu CPM-1800B Goniophotometer
 Humidity: 1.37
 Test Distance: 6.38 m
 Remarks:

Report No.:

Test Time: 2022/11/24 15:47:35

UGR(Unified Glare Rating) TABLE

RHOCC	70	70	50	50	30	70	70	50	50	30
RHOW	50	30	50	30	30	50	30	50	30	30
RHOF	20	20	20	20	20	20	20	20	20	20
Room Size X Y	Viewed Endwise					Viewed Crosswise				
2H 2H	0.83	0.89	1.03	1.08	1.32	0.83	0.89	1.03	1.08	1.32
3H	0.81	0.87	1.02	1.07	1.31	0.81	0.87	1.02	1.07	1.31
4H	0.80	0.86	1.01	1.06	1.31	0.80	0.86	1.01	1.06	1.31
6H	0.78	0.85	1.00	1.05	1.30	0.78	0.85	1.00	1.05	1.30
8H	0.78	0.84	1.00	1.05	1.30	0.78	0.84	1.00	1.05	1.30
12H	0.77	0.83	0.99	1.04	1.30	0.77	0.83	0.99	1.04	1.30
4H 2H	0.80	0.86	1.01	1.06	1.31	0.80	0.86	1.01	1.06	1.31
3H	0.77	0.83	0.99	1.04	1.30	0.77	0.83	0.99	1.04	1.30
4H	0.75	0.82	0.98	1.03	1.29	0.75	0.82	0.98	1.03	1.29
6H	0.73	0.80	0.97	1.02	1.28	0.73	0.80	0.97	1.02	1.28
8H	0.72	0.79	0.96	1.01	1.28	0.72	0.79	0.96	1.01	1.28
12H	0.71	0.77	0.96	1.01	1.28	0.71	0.77	0.96	1.01	1.28
8H 4H	0.78	0.84	1.00	1.05	1.30	0.78	0.84	1.00	1.05	1.30
6H	0.69	0.76	0.95	1.00	1.27	0.69	0.76	0.95	1.00	1.27
8H	0.68	0.74	0.94	0.99	1.27	0.68	0.74	0.94	0.99	1.27
12H	0.66	0.72	0.93	0.98	1.26	0.66	0.72	0.93	0.98	1.26
12H 4H	0.71	0.77	0.96	1.01	1.28	0.71	0.77	0.96	1.01	1.28
6H	0.68	0.74	0.94	0.99	1.27	0.68	0.74	0.94	0.99	1.27

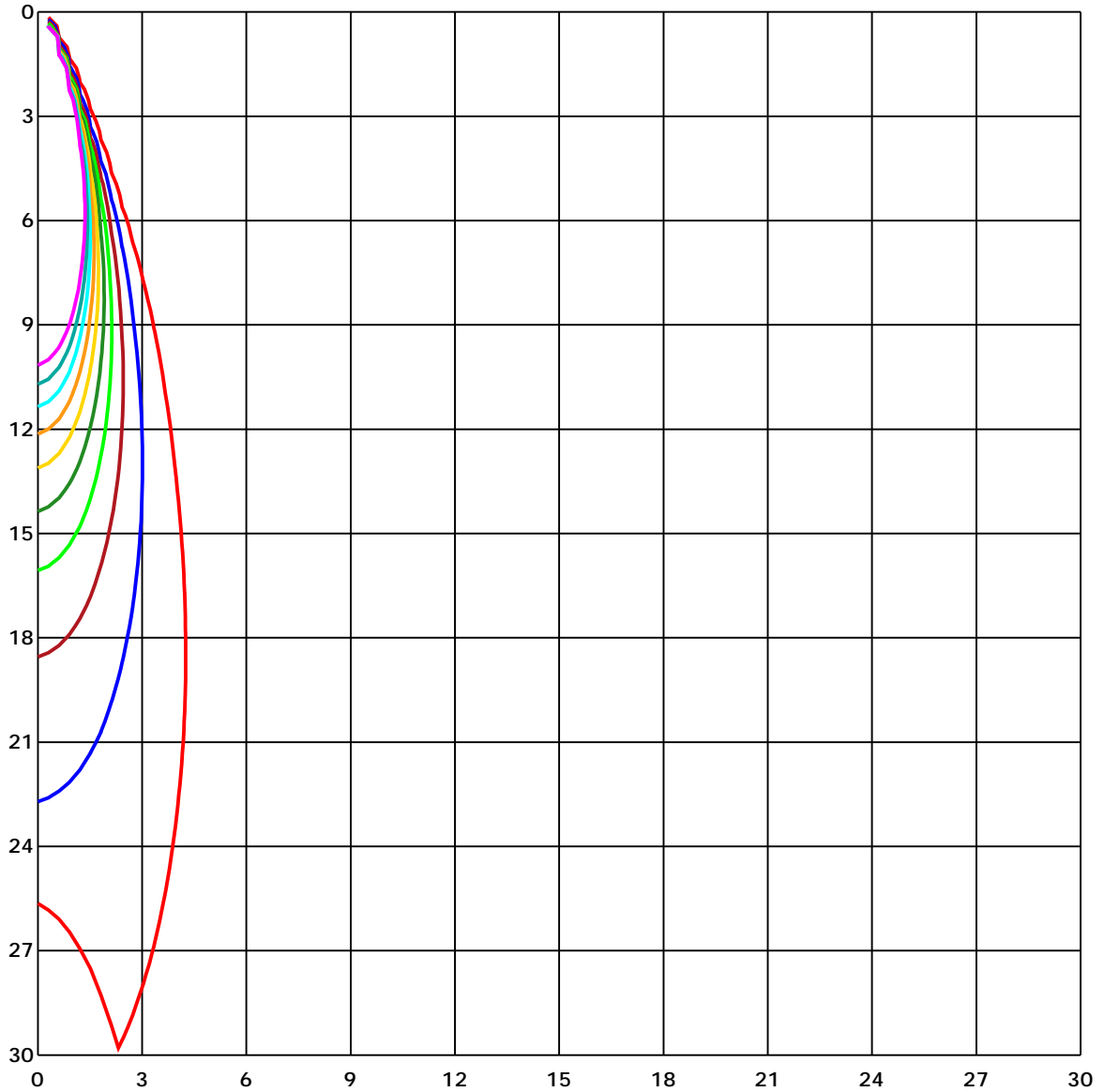
C Range: 0 - 360 Deg
 C Interval: 45.0 Deg
 Test Speed: High
 Temperature: 6.38
 Operators:
 Test Date: 2022/11/24 15:47:35

G Range: 0 - 90 Deg
 G Interval: 1.0 Deg
 Test System: Huipu CPM-1800B Goniophotometer
 Humidity: 1.37
 Test Distance: 6.38 m
 Remarks:

Report No.:

Test Time: 2022/11/24 15:47:35

SPACE ISOLX DIAGRAM



Unit of illumination: lx

- | | |
|----------|---------|
| — 17.587 | — 8.793 |
| — 15.828 | — 7.035 |
| — 14.07 | — 5.276 |
| — 12.311 | — 3.517 |
| — 10.552 | — 1.759 |

C Range: 0 - 360 Deg

C Interval: 45.0 Deg

Test Speed: High

Temperature: 6.38

Operators:

Test Date: 2022/11/24 15:47:35

G Range: 0 - 90 Deg

G Interval: 1.0 Deg

Test System: Huipu CPM-1800B Goniophotometer

Humidity: 1.37

Test Distance: 6.38 m

Remarks:

Report No.:

Test Time: 2022/11/24 15:47:35

LUMINOUS DISTRIBUTION INTENSITY DATA

GammaC	C0	C45	C90	C135	C180	C225	C270	C315	C360
G0	1814.82	1682.38	1734.01	1783.14	1814.82	1682.38	1734.01	1783.14	1814.82
G1	1791.51	1621.65	1709.59	1775.67	1826.03	1724.81	1743.55	1771.21	1791.51
G2	1750.24	1538.61	1664.59	1755.2	1824.24	1749.57	1735.3	1745.84	1750.24
G3	1692.41	1436.51	1597.72	1713.1	1802.21	1756.15	1712.77	1702.12	1692.41
G4	1614.4	1327.88	1520.94	1652.65	1763.96	1751.75	1678.75	1642.28	1614.4
G5	1526.12	1215.46	1427.81	1577.87	1707.02	1734.63	1632.52	1573.19	1526.12
G6	1419.16	1099.85	1327.65	1488.26	1630.79	1700.44	1565.55	1483.63	1419.16
G7	1308.69	992.23	1221.03	1384.76	1533.71	1654.16	1477.38	1379.13	1308.69
G8	1190.86	881.92	1114.02	1274.68	1427.03	1585.01	1379.46	1275.63	1190.86
G9	1074.48	775.41	1008.01	1162.2	1310.87	1492.72	1274.4	1166.49	1074.48
G10	958.04	677.88	902.84	1052.9	1194.04	1389.05	1166.83	1054.96	958.04
G11	848.07	586.87	802.85	943.99	1079.83	1286.17	1057.64	948.56	848.07
G12	744.85	503.95	705.82	841.1	968.75	1185.34	951.74	841.33	744.85
G13	643.53	430.23	616.37	745.97	855.99	1079.78	845.23	738.89	643.53
G14	553.97	364.87	535.18	653.57	752.49	974.49	745.13	646.43	553.97
G15	468.54	307.1	462.96	568.08	657.3	869.71	645.93	559.21	468.54
G16	391.75	257.97	397.44	491.74	569.97	767.22	557.09	481.59	391.75
G17	328.12	216.26	341.78	422.92	490.4	673.25	476.12	413.0	328.12
G18	271.41	178.23	290.59	361.69	418.85	592.73	400.28	355.78	271.41
G19	223.45	142.2	245.53	305.93	354.39	520.62	334.31	305.82	223.45
G20	181.52	112.14	205.05	257.63	300.57	456.16	277.99	261.54	181.52
G21	143.82	87.38	169.86	214.64	251.28	394.82	231.42	220.66	143.82
G22	108.02	67.36	139.36	177.39	209.45	333.81	189.15	180.68	108.02
G23	79.07	52.87	114.6	145.16	169.97	277.54	147.78	140.64	79.07
G24	58.44	41.54	93.07	118.44	134.28	232.09	106.18	105.62	58.44
G25	45.0	31.28	75.9	95.02	106.34	188.49	76.45	77.62	45.0
G26	35.08	23.37	59.78	76.45	84.76	147.33	57.05	58.55	35.08
G27	27.94	16.84	45.34	59.95	67.03	111.42	42.99	46.17	27.94
G28	22.25	11.49	33.12	44.89	53.92	83.87	34.02	37.59	22.25
G29	17.12	8.92	23.59	31.84	41.99	64.13	26.88	31.51	17.12
G30	13.55	7.31	17.51	21.53	31.95	50.8	21.8	26.04	13.55
G31	10.43	5.8	13.89	14.0	23.98	41.6	17.79	21.69	10.43
G32	8.31	4.41	11.54	10.21	17.9	34.07	14.55	18.24	8.31
G33	6.75	3.07	9.76	7.92	14.61	27.88	11.88	15.22	6.75
G34	5.63	2.62	7.64	6.36	12.16	22.42	9.65	13.33	5.63
G35	4.68	2.12	6.41	4.24	10.37	17.9	7.92	11.21	4.68
G36	3.62	1.45	5.69	2.62	8.48	14.39	6.64	9.81	3.62

C Range: 0 - 360 Deg

C Interval: 45.0 Deg

Test Speed: High

Temperature: 6.38

Operators:

Test Date: 2022/11/24 15:47:35

G Range: 0 - 90 Deg

G Interval: 1.0 Deg

Test System: Huipu CPM-1800B Goniophotometer

Humidity: 1.37

Test Distance: 6.38 m

Remarks:

Report No.:

Test Time: 2022/11/24 15:47:35

LUMINOUS DISTRIBUTION INTENSITY DATA(Continue 1)

GammaC	C0	C45	C90	C135	C180	C225	C270	C315	C360	
G37	2.96	1.34	5.13	2.06	7.03	12.16	5.52	8.64	2.96	
G38	2.45	0.84	4.63	1.67	6.36	10.65	4.41	7.53	2.45	
G39	2.06	0.67	4.18	1.39	5.41	9.37	3.68	6.58	2.06	
G40	1.67	0.45	3.79	1.06	5.19	7.97	2.96	5.8	1.67	
G41	1.34	0.22	3.46	0.84	4.68	6.86	2.57	5.19	1.34	
G42	1.06	0.0	3.07	0.33	4.02	6.08	2.06	4.68	1.06	
G43	0.84	0.0	3.07	0.11	3.85	5.41	1.62	4.18	0.84	
G44	0.61	0.0	2.57	0.08	3.51	4.8	1.23	3.68	0.61	
G45	0.33	0.0	2.34	0.06	3.12	4.41	0.89	3.29	0.33	
G46	0.17	0.0	2.17	0.0	2.9	3.96	0.61	3.01	0.17	
G47	0.06	0.0	2.01	0.0	2.62	3.57	0.39	2.68	0.06	
G48	0.06	0.0	1.9	0.0	2.4	3.12	0.11	2.4	0.06	
G49	0.0	0.0	2.01	0.0	2.29	2.84	0.0	2.29	0.0	
G50	0.0	0.0	1.67	0.0	2.06	2.57	0.0	2.12	0.0	
G51	0.0	0.0	1.78	0.0	1.9	2.34	0.0	1.95	0.0	
G52	0.0	0.0	1.56	0.0	1.84	2.23	0.0	1.84	0.0	
G53	0.0	0.0	1.51	0.0	1.78	1.95	0.0	1.67	0.0	
G54	0.0	0.0	1.45	0.0	1.95	1.73	0.0	1.62	0.0	
G55	0.0	0.0	1.45	0.0	1.56	1.84	0.0	1.56	0.0	
G56	0.0	0.0	1.39	0.0	1.51	1.67	0.0	1.34	0.0	
G57	0.0	0.0	1.39	0.0	1.73	1.56	0.0	1.45	0.0	
G58	0.0	0.0	1.34	0.0	1.45	1.56	0.0	1.39	0.0	
G59	0.0	0.0	1.28	0.0	1.39	1.51	0.0	1.34	0.0	
G60	0.0	0.0	1.23	0.0	1.34	1.45	0.0	1.28	0.0	
G61	0.0	0.0	1.17	0.0	1.34	1.39	0.0	1.23	0.0	
G62	0.0	0.0	1.12	0.0	1.23	1.34	0.0	1.23	0.0	
G63	0.0	0.0	1.06	0.0	1.23	1.28	0.0	1.17	0.0	
G64	0.0	0.0	1.06	0.0	1.17	1.0	0.0	1.12	0.0	
G65	0.0	0.0	1.0	0.0	1.17	0.95	0.0	1.12	0.0	
G66	0.0	0.0	0.95	0.0	1.12	1.12	0.0	0.84	0.0	
G67	0.0	0.0	0.89	0.0	0.89	1.06	0.0	0.78	0.0	
G68	0.0	0.0	0.89	0.0	1.06	1.06	0.0	0.86	0.0	
G69	0.0	0.0	0.84	0.0	1.06	1.0	0.0	0.95	0.0	
G70	0.0	0.0	0.78	0.0	1.0	0.95	0.0	0.89	0.0	
G71	0.0	0.0	0.72	0.0	1.0	0.78	0.0	0.84	0.0	
G72	0.0	0.0	0.72	0.0	0.95	0.84	0.0	0.84	0.0	
G73	0.0	0.0	0.67	0.0	0.89	0.84	0.0	0.84	0.0	

C Range: 0 - 360 Deg

C Interval: 45.0 Deg

Test Speed: High

Temperature: 6.38

Operators:

Test Date: 2022/11/24 15:47:35

G Range: 0 - 90 Deg

G Interval: 1.0 Deg

Test System: Huipu CPM-1800B Goniophotometer

Humidity: 1.37

Test Distance: 6.38 m

Remarks:

