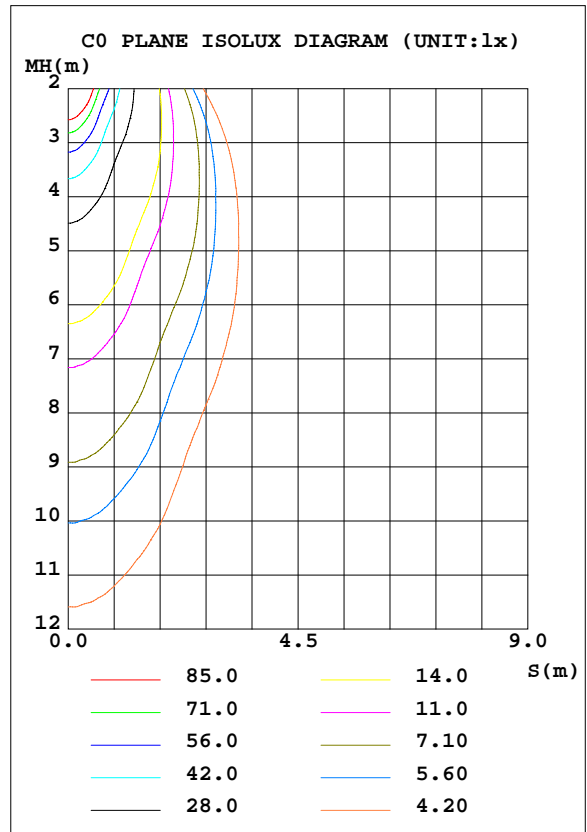
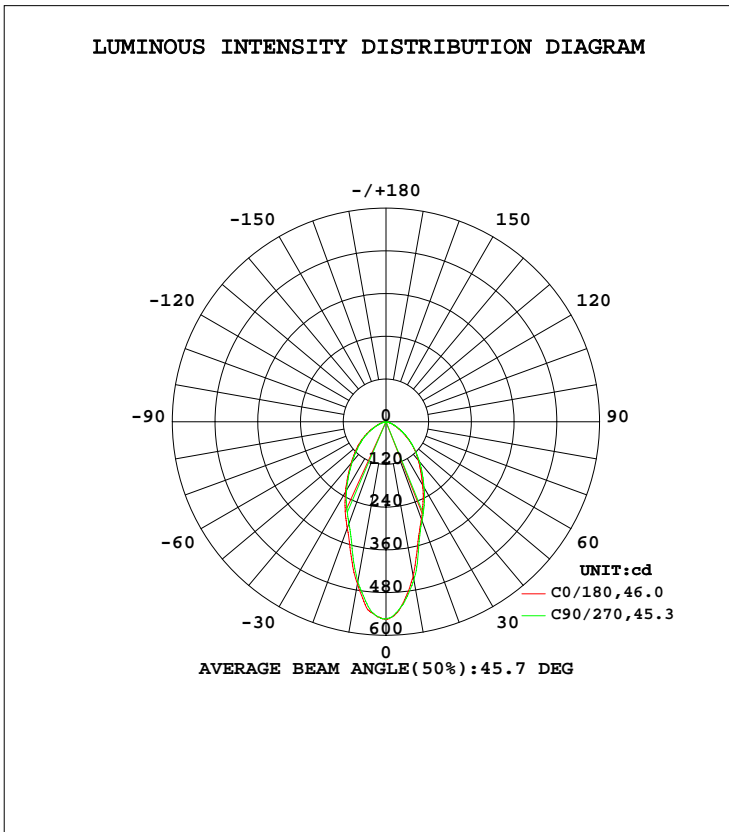


LUMINAIRE PHOTOMETRIC TEST REPORT

NAME: MR16-6W-4000K	TYPE:	WEIGHT:
SPEC.:	DIM.:	SERIAL No.:
MFR.: EVERFINE	SUR.:0.005	Shielding Angle:

DATA OF LAMP		PHOTOMETRIC DATA			
MODEL	1008	I _{max} (cd)	554.2	S/MH(C0/180)	0.69
NOMINAL POWER(W)	6	LOR(%)	100.0	S/MH(C90/270)	0.66
RATED VOLTAGE(V)	230	TOTAL FLUX(lm)	587.43	η UP, DN(C0-180)	0.0,49.1
NOMINAL FLUX(lm)	587.426	CIE CLASS	DIRECT	η UP, DN(C180-360)	0.0,50.9
LAMPS INSIDE	1	η up(%)	0.0	CIBSE SHR NOM	0.75
TEST VOLTAGE(V)	230	η down(%)	100.0	CIBSE SHR MAX	0.85



C Range: 0 - 360DEG
 C Interval: 45.0DEG
 Test Speed: MEDIUM
 Temperature:25.3DEG
 Operators:fu
 Test Date:09 August 2022

γ Range: 0 - 90DEG
 γ Interval: 0.5DEG
 Test System:EVERFINE GO-i300_V1 SYSTEM V2.0.406.11
 Humidity:65.0%
 Test Distance:3.161m [K=1.0000]
 Remarks:

ZONAL FLUX DIAGRAM

ZONAL FLUX DIAGRAM:

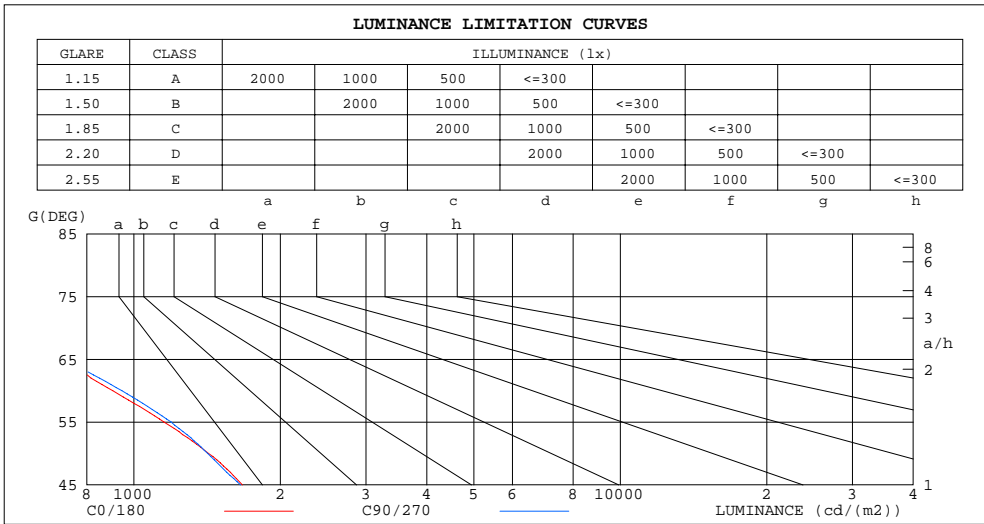
γ	C0	C45	C90	C135	C180	C225	C270	C315	γ	Φ zone	Φ total	Φ lum,lamp
10	440.6	427.3	451.4	480.0	462.7	466.2	456.5	442.8	0- 10	47.75	47.75	8.13,8.13
20	291.3	288.6	296.4	309.7	318.4	312.8	305.2	286.9	10- 20	102.1	149.8	25.5,25.5
30	206.9	216.1	214.4	220.2	228.0	230.4	221.4	206.6	20- 30	118.4	268.2	45.7,45.7
40	141.8	151.6	146.3	157.9	152.7	163.4	147.7	152.2	30- 40	114.2	382.4	65.1,65.1
50	89.88	95.22	91.69	107.5	100.6	105.7	94.81	96.07	40- 50	95.50	477.9	81.4,81.4
60	44.46	45.61	47.51	54.65	54.80	55.14	50.84	45.71	50- 60	64.82	542.8	92.4,92.4
70	17.48	16.27	18.14	20.33	22.97	21.76	19.27	16.80	60- 70	32.45	575.2	97.9,97.9
80	4.522	2.704	2.038	3.994	6.487	4.010	2.070	2.857	70- 80	11.08	586.3	99.8,99.8
90	0.1010	0.0015	0.0374	0.0037	0.2852	0.0138	0.0601	0.0074	80- 90	1.130	587.4	100,100
100									90-100			
110									100-110			
120									110-120			
130									120-130			
140									130-140			
150									140-150			
160									150-160			
170									160-170			
180									170-180			
DEG	LUMINOUS INTENSITY:cd									UNIT:lm		

C Range: 0 - 360DEG
 C Interval: 45.0DEG
 Test Speed: MEDIUM
 Temperature:25.3DEG
 Operators:fu
 Test Date:09 August 2022

γ Range: 0 - 90DEG
 γ Interval: 0.5DEG
 Test System:EVERFINE GO-i300_V1 SYSTEM V2.0.406.11
 Humidity:65.0%
 Test Distance:3.161m [K=1.0000]
 Remarks:

LUMINANCE LIMITATION CURVES

NAME: MR16-6W-4000K	TYPE:	WEIGHT:
SPEC.:	DIM.:	SERIAL No.:
MFR.: EVERFINE	SUR.:0.005	Shielding Angle:



LUMINANCE cd/(m2)		
G (DEG)	C0/180	C90/270
85	153	17
80	265	117
75	380	354
70	520	527
65	696	721
60	905	945
55	1154	1193
50	1423	1418
45	1672	1657

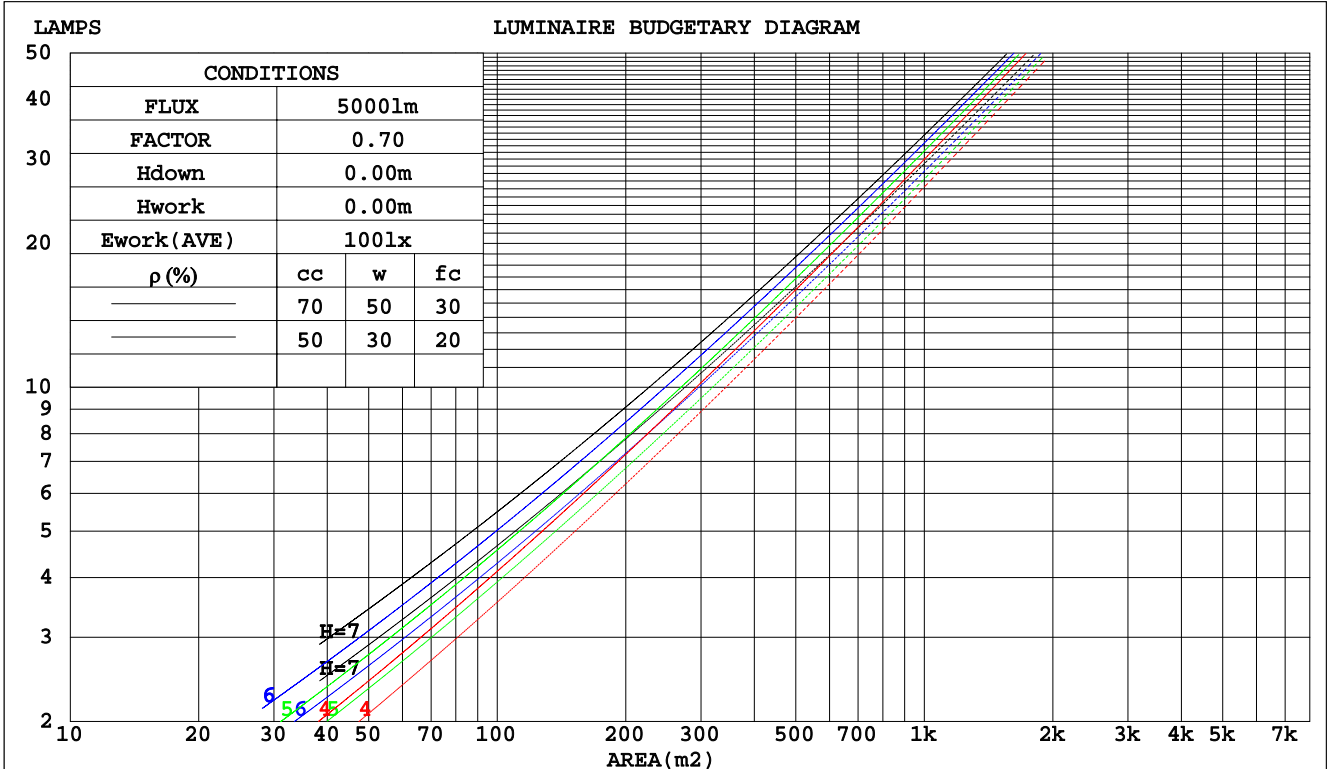
C Range: 0 - 360DEG
 C Interval: 45.0DEG
 Test Speed: MEDIUM
 Temperature: 25.3DEG
 Operators: fu
 Test Date: 09 August 2022

γ Range: 0 - 90DEG
 γ Interval: 0.5DEG
 Test System: EVERFINE GO-i300_V1 SYSTEM V2.0.406.11
 Humidity: 65.0%
 Test Distance: 3.161m [K=1.0000]
 Remarks:

CU AND LUMINAIRE BUDGETARY ESTIMATE DIAGRAM

NAME: MR16-6W-4000K	TYPE:	WEIGHT:
SPEC.:	DIM.:	SERIAL No.:
MFR.: EVERFINE	SUR.:0.005	Shielding Angle:

pcc	80%			70%			50%			30%			10%			0
	50%	30%	10%	50%	30%	10%	50%	30%	10%	50%	30%	10%	50%	30%	10%	0
pw																
pfc	20%			20%			20%			20%			20%			0
RCR	RCR:Room Cavity Ratio															
	Coefficients of Utilization(CU)															
0.0	1.19	1.19	1.19	1.16	1.16	1.16	1.11	1.11	1.11	1.06	1.06	1.06	1.02	1.02	1.02	1.00
1.0	1.08	1.05	1.02	1.06	1.03	1.00	1.02	.99	.97	.98	.96	.94	.94	.93	.91	.90
2.0	.97	.92	.88	.96	.91	.87	.92	.88	.85	.89	.86	.83	.86	.84	.81	.79
3.0	.88	.82	.77	.87	.81	.76	.84	.79	.75	.81	.77	.73	.79	.75	.72	.70
4.0	.80	.73	.68	.79	.72	.67	.77	.71	.66	.75	.70	.66	.73	.68	.65	.63
5.0	.73	.66	.61	.72	.65	.60	.70	.64	.60	.69	.63	.59	.67	.62	.59	.57
6.0	.68	.60	.55	.67	.60	.54	.65	.59	.54	.63	.58	.54	.62	.57	.53	.51
7.0	.62	.55	.50	.62	.55	.50	.60	.54	.49	.59	.53	.49	.58	.53	.49	.47
8.0	.58	.51	.46	.57	.50	.45	.56	.50	.45	.55	.49	.45	.54	.49	.45	.43
9.0	.54	.47	.42	.53	.47	.42	.52	.46	.42	.51	.46	.42	.50	.45	.41	.40
10.0	.50	.44	.39	.50	.43	.39	.49	.43	.39	.48	.43	.39	.47	.42	.38	.37



C Range: 0 - 360DEG
 C Interval: 45.0DEG
 Test Speed: MEDIUM
 Temperature: 25.3DEG
 Operators: fu
 Test Date: 09 August 2022

γ Range: 0 - 90DEG
 γ Interval: 0.5DEG
 Test System: EVERFINE GO-i300_V1 SYSTEM V2.0.406.11
 Humidity: 65.0%
 Test Distance: 3.161m [K=1.0000]
 Remarks:

WEC AND CCEC

NAME: MR16-6W-4000K	TYPE:	WEIGHT:
SPEC.:	DIM.:	SERIAL No.:
MFR.: EVERFINE	SUR.:0.005	Shielding Angle:

ρcc	80%			70%			50%			30%			10%			0
ρw	50%	30%	10%	50%	30%	10%	50%	30%	10%	50%	30%	10%	50%	30%	10%	0
ρfc	20%			20%			20%			20%			20%			0
RCR	RCR:Room Cavity Ratio						Wall Exitance Coefficients(WEC)									
0.0																
1.0	.231	.131	.042	.224	.128	.041	.211	.121	.039	.199	.115	.037	.188	.109	.035	
2.0	.224	.123	.038	.218	.120	.037	.207	.115	.036	.197	.110	.035	.187	.106	.033	
3.0	.213	.113	.034	.208	.111	.033	.198	.107	.033	.189	.104	.032	.181	.100	.031	
4.0	.201	.104	.031	.196	.103	.030	.188	.100	.030	.180	.097	.029	.173	.094	.029	
5.0	.189	.096	.028	.185	.095	.028	.178	.092	.027	.171	.090	.027	.164	.088	.026	
6.0	.178	.089	.026	.174	.088	.025	.168	.086	.025	.162	.084	.025	.156	.082	.024	
7.0	.168	.083	.024	.165	.082	.023	.159	.080	.023	.153	.079	.023	.148	.077	.023	
8.0	.159	.077	.022	.156	.077	.022	.151	.075	.021	.146	.074	.021	.141	.072	.021	
9.0	.150	.073	.020	.148	.072	.020	.143	.071	.020	.138	.069	.020	.134	.068	.020	
10.0	.142	.068	.019	.140	.068	.019	.136	.067	.019	.132	.065	.019	.128	.064	.018	

ρcc	80%			70%			50%			30%			10%			0
ρw	50%	30%	10%	50%	30%	10%	50%	30%	10%	50%	30%	10%	50%	30%	10%	0
ρfc	20%			20%			20%			20%			20%			0
RCR	RCR:Room Cavity Ratio						Ceiling Cavity Exitance Coefficients(CCEC)									
0.0	.190	.190	.190	.163	.163	.163	.111	.111	.111	.064	.064	.064	.020	.020	.020	
1.0	.175	.157	.141	.150	.135	.121	.102	.093	.084	.059	.054	.049	.019	.017	.016	
2.0	.163	.132	.106	.140	.114	.092	.096	.079	.064	.055	.046	.038	.018	.015	.012	
3.0	.153	.114	.082	.132	.098	.071	.090	.068	.050	.052	.040	.030	.017	.013	.010	
4.0	.145	.100	.066	.124	.086	.057	.086	.060	.040	.049	.035	.024	.016	.011	.008	
5.0	.137	.089	.053	.118	.077	.046	.081	.054	.033	.047	.032	.019	.015	.010	.006	
6.0	.130	.080	.044	.112	.069	.039	.077	.049	.027	.045	.029	.016	.014	.009	.005	
7.0	.124	.073	.037	.106	.063	.033	.074	.044	.023	.043	.026	.014	.014	.009	.005	
8.0	.118	.067	.032	.101	.058	.028	.070	.041	.020	.041	.024	.012	.013	.008	.004	
9.0	.112	.062	.028	.097	.054	.024	.067	.038	.017	.039	.022	.010	.013	.007	.003	
10.0	.107	.058	.025	.092	.050	.022	.064	.035	.015	.037	.021	.009	.012	.007	.003	

C Range: 0 - 360DEG
 C Interval: 45.0DEG
 Test Speed: MEDIUM
 Temperature:25.3DEG
 Operators:fu
 Test Date:09 August 2022

γ Range: 0 - 90DEG
 γ Interval: 0.5DEG
 Test System:EVERFINE GO-i300_V1 SYSTEM V2.0.406.11
 Humidity:65.0%
 Test Distance:3.161m [K=1.0000]
 Remarks:

UGR(Unified Glare Rating) Table

NAME: MR16-6W-4000K	TYPE:	WEIGHT:
SPEC.:	DIM.:	SERIAL No.:
MFR.: EVERFINE	SUR.:0.005	Shielding Angle:

ceiling/cavity	0.7	0.7	0.5	0.5	0.3	0.7	0.7	0.5	0.5	0.3
walls	0.5	0.3	0.5	0.3	0.3	0.5	0.3	0.5	0.3	0.3
working plane	0.2	0.2	0.2	0.2	0.2	0.2	0.2	0.2	0.2	0.2
Room dimensions	Viewed crosswise					Viewed endwise				
x = 2H y = 2H	14.0	15.3	14.3	15.5	15.7	14.1	15.3	14.4	15.5	15.7
3H	14.4	15.5	14.7	15.8	16.0	14.5	15.6	14.8	15.8	16.1
4H	14.5	15.6	14.8	15.8	16.0	14.5	15.6	14.8	15.8	16.1
6H	14.5	15.5	14.8	15.7	16.0	14.5	15.5	14.8	15.8	16.0
8H	14.4	15.4	14.8	15.7	16.0	14.4	15.4	14.8	15.7	16.0
12H	14.4	15.3	14.7	15.6	15.9	14.4	15.3	14.7	15.6	15.9
4H 2H	14.2	15.3	14.5	15.5	15.8	14.3	15.3	14.6	15.6	15.8
3H	14.7	15.6	15.0	15.9	16.2	14.7	15.7	15.1	16.0	16.2
4H	14.8	15.6	15.1	15.9	16.3	14.8	15.7	15.2	16.0	16.3
6H	14.8	15.6	15.2	15.9	16.3	14.8	15.6	15.2	15.9	16.2
8H	14.8	15.5	15.2	15.8	16.2	14.8	15.5	15.2	15.8	16.2
12H	14.8	15.4	15.2	15.8	16.2	14.7	15.4	15.1	15.7	16.1
8H 4H	14.7	15.4	15.1	15.8	16.2	14.8	15.5	15.2	15.8	16.2
6H	14.8	15.4	15.2	15.8	16.2	14.8	15.3	15.2	15.7	16.2
8H	14.8	15.3	15.2	15.7	16.1	14.7	15.2	15.2	15.7	16.1
12H	14.8	15.2	15.2	15.6	16.1	14.7	15.1	15.2	15.6	16.0
12H 4H	14.7	15.3	15.1	15.7	16.1	14.7	15.4	15.2	15.8	16.1
6H	14.8	15.3	15.2	15.7	16.1	14.7	15.2	15.2	15.7	16.1
8H	14.8	15.2	15.2	15.6	16.1	14.7	15.1	15.2	15.6	16.0
Variations with the observer position at spacings:										
S = 1.0H	+ 0.8 / - 1.0					+ 0.8 / - 1.0				
1.5H	+ 0.4 / - 0.4					+ 0.3 / - 0.4				
2.0H	+ 1.5 / - 1.7					+ 1.5 / - 1.8				

CIE Pub.117, 587.4 lm Total Lamp Luminous Flux Correct (8log(F/F0) = -1.8)

C Range: 0 - 360DEG

C Interval: 45.0DEG

Test Speed: MEDIUM

Temperature:25.3DEG

Operators:fu

Test Date:09 August 2022

γ Range: 0 - 90DEG

γ Interval: 0.5DEG

Test System:EVERFINE GO-i300_V1 SYSTEM V2.0.406.11

Humidity:65.0%

Test Distance:3.161m [K=1.0000]

Remarks:

UTILIZATION FACTORS TABLE

NAME: MR16-6W-4000K	TYPE:	WEIGHT:
SPEC.:	DIM.:	SERIAL No.:
MFR.: EVERFINE	SUR.:0.005	Shielding Angle:

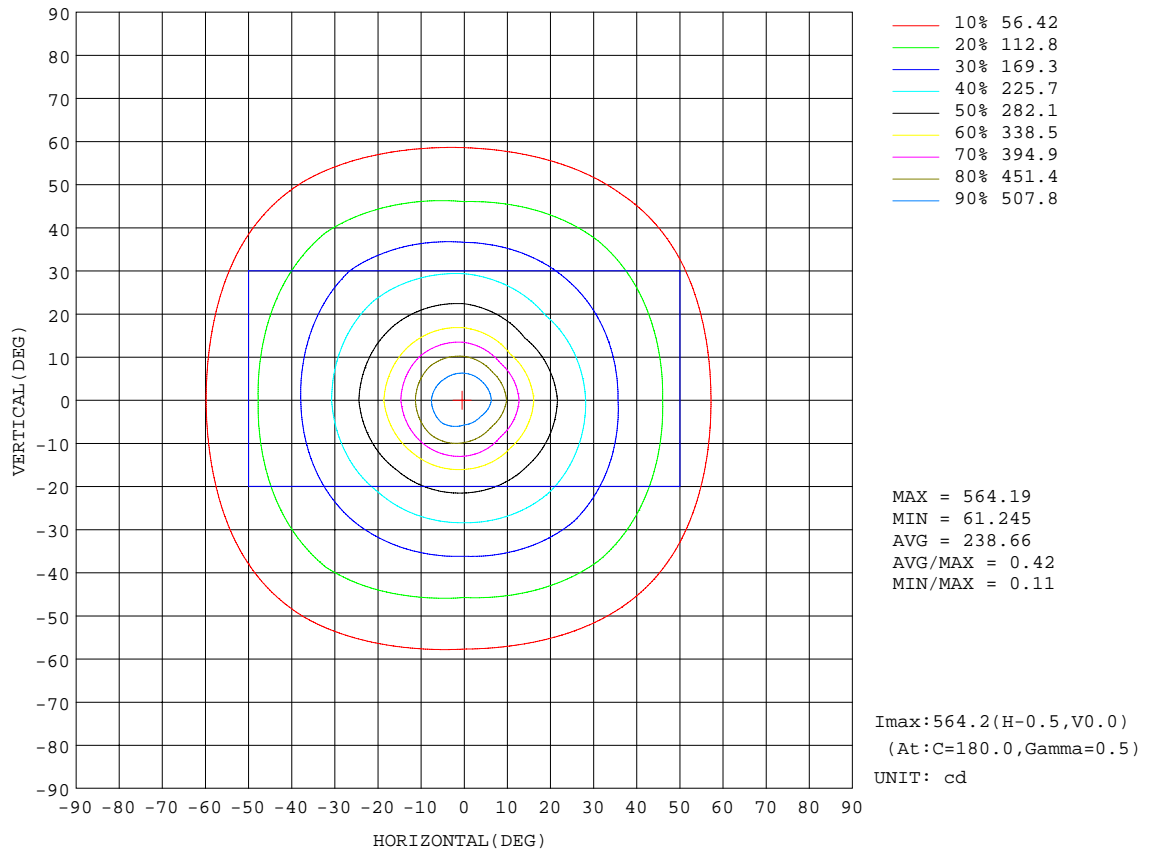
REFLECTANCE										
Ceiling	0.8	0.8	0.8	0.7	0.7	0.7	0.5	0.5	0.5	0
Walls	0.7	0.5	0.3	0.7	0.5	0.3	0.7	0.5	0.3	0
Working plane	0.2	0.2	0.2	0.2	0.2	0.2	0.2	0.2	0.2	0
ROOM INDEX	UTILIZATION FACTORS(PERCENT) k(RI) x RCR = 5									
k = 0.60	69	60	54	69	60	54	68	59	54	49
0.80	79	70	64	78	70	64	77	69	64	58
1.00	87	78	72	86	77	72	84	78	72	66
1.25	93	85	79	91	84	79	89	83	78	72
1.50	97	89	84	95	89	84	93	87	83	77
2.00	102	96	91	100	95	90	97	93	89	82
2.50	105	99	95	103	98	94	100	95	92	85
3.00	107	102	98	105	101	97	102	98	95	88
4.00	110	106	103	108	104	101	104	101	99	91
5.00	112	108	105	110	107	104	105	103	101	92
ROOM INDEX	UF(total)									Direct
According to DIN EN 13032-2 2004			Suspended				SHRNOM = 1.25			

C Range: 0 - 360DEG
 C Interval: 45.0DEG
 Test Speed: MEDIUM
 Temperature:25.3DEG
 Operators:fu
 Test Date:09 August 2022

γ Range: 0 - 90DEG
 γ Interval: 0.5DEG
 Test System:EVERFINE GO-i300_V1 SYSTEM V2.0.406.11
 Humidity:65.0%
 Test Distance:3.161m [K=1.0000]
 Remarks:

ISOCANDELA DIAGRAM

NAME: MR16-6W-4000K	TYPE:	WEIGHT:
SPEC.:	DIM.:	SERIAL No.:
MFR.: EVERFINE	SUR.:0.005	Shielding Angle:



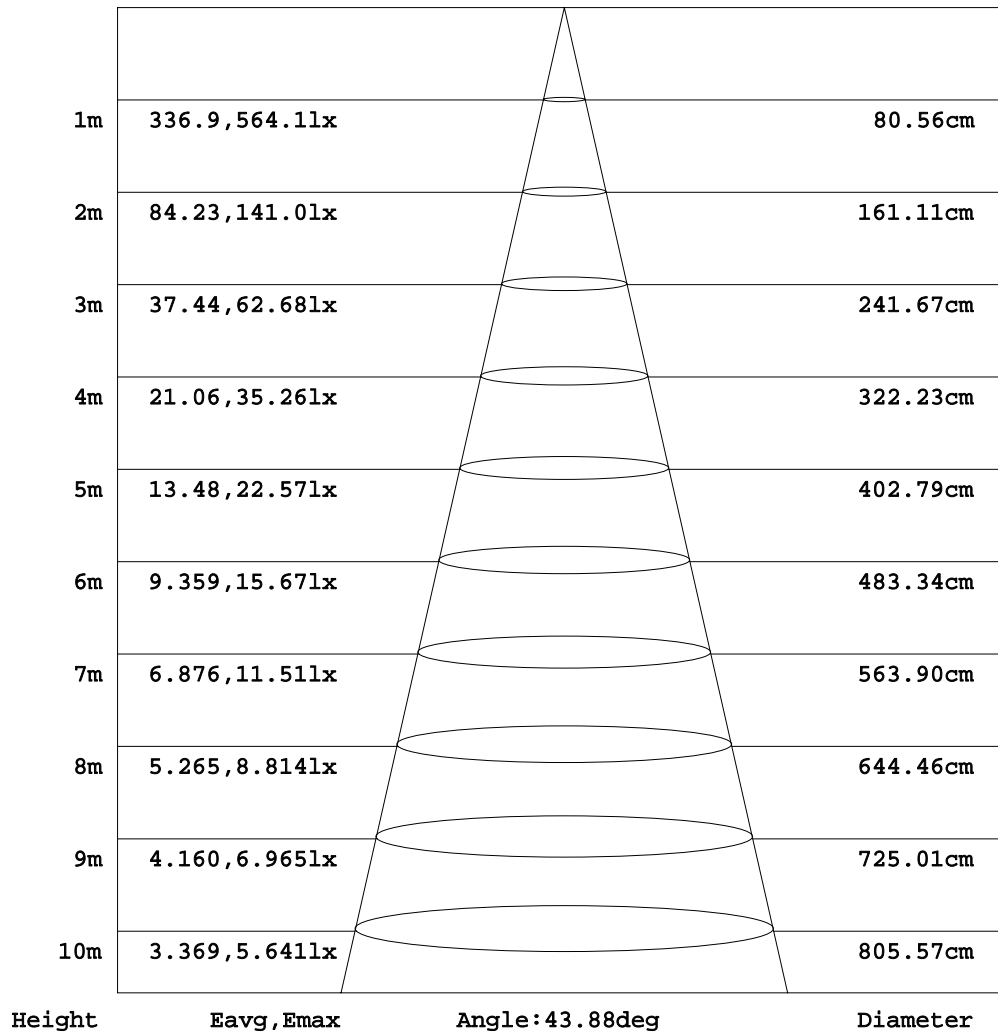
C Range: 0 - 360DEG
 C Interval: 45.0DEG
 Test Speed: MEDIUM
 Temperature:25.3DEG
 Operators:fu
 Test Date:09 August 2022

γ Range: 0 - 90DEG
 γ Interval: 0.5DEG
 Test System:EVERFINE GO-i300_V1 SYSTEM V2.0.406.11
 Humidity:65.0%
 Test Distance:3.161m [K=1.0000]
 Remarks:

AAI Figure

NAME: MR16-6W-4000K	TYPE:	WEIGHT:
SPEC.:	DIM.:	SERIAL No.:
MFR.: EVERFINE	SUR.:0.005	Shielding Angle:

Flux out:172.8 lm



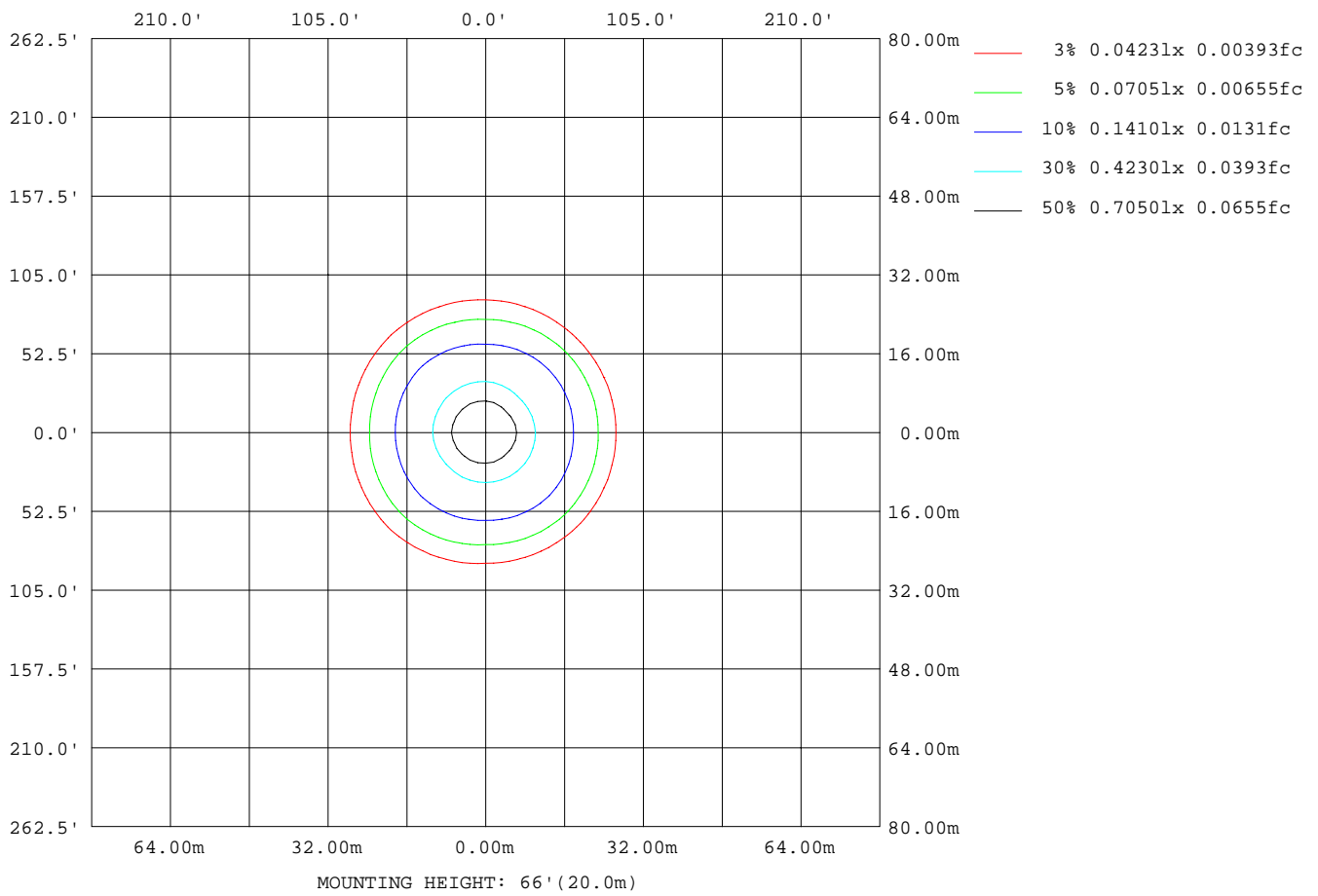
Note:The Curves indicate the illuminated area and the average illumination when the luminaire is at different distance.

C Range: 0 - 360DEG
 C Interval: 45.0DEG
 Test Speed: MEDIUM
 Temperature:25.3DEG
 Operators:fu
 Test Date:09 August 2022

γ Range: 0 - 90DEG
 γ Interval: 0.5DEG
 Test System:EVERFINE GO-i300_V1 SYSTEM V2.0.406.11
 Humidity:65.0%
 Test Distance:3.161m [K=1.0000]
 Remarks:

ISOLUX DIAGRAM

NAME: MR16-6W-4000K	TYPE:	WEIGHT:
SPEC.:	DIM.:	SERIAL No.:
MFR.: EVERFINE	SUR.:0.005	Shielding Angle:



C Range: 0 - 360DEG
 C Interval: 45.0DEG
 Test Speed: MEDIUM
 Temperature:25.3DEG
 Operators:fu
 Test Date:09 August 2022

γ Range: 0 - 90DEG
 γ Interval: 0.5DEG
 Test System:EVERFINE GO-i300_V1 SYSTEM V2.0.406.11
 Humidity:65.0%
 Test Distance:3.161m [K=1.0000]
 Remarks:

LED Avg.L Report

NAME: MR16-6W-4000K	TYPE:	WEIGHT:
SPEC.:	DIM.:	SERIAL No.:
MFR.: EVERFINE	SUR.:0.005	Shielding Angle:

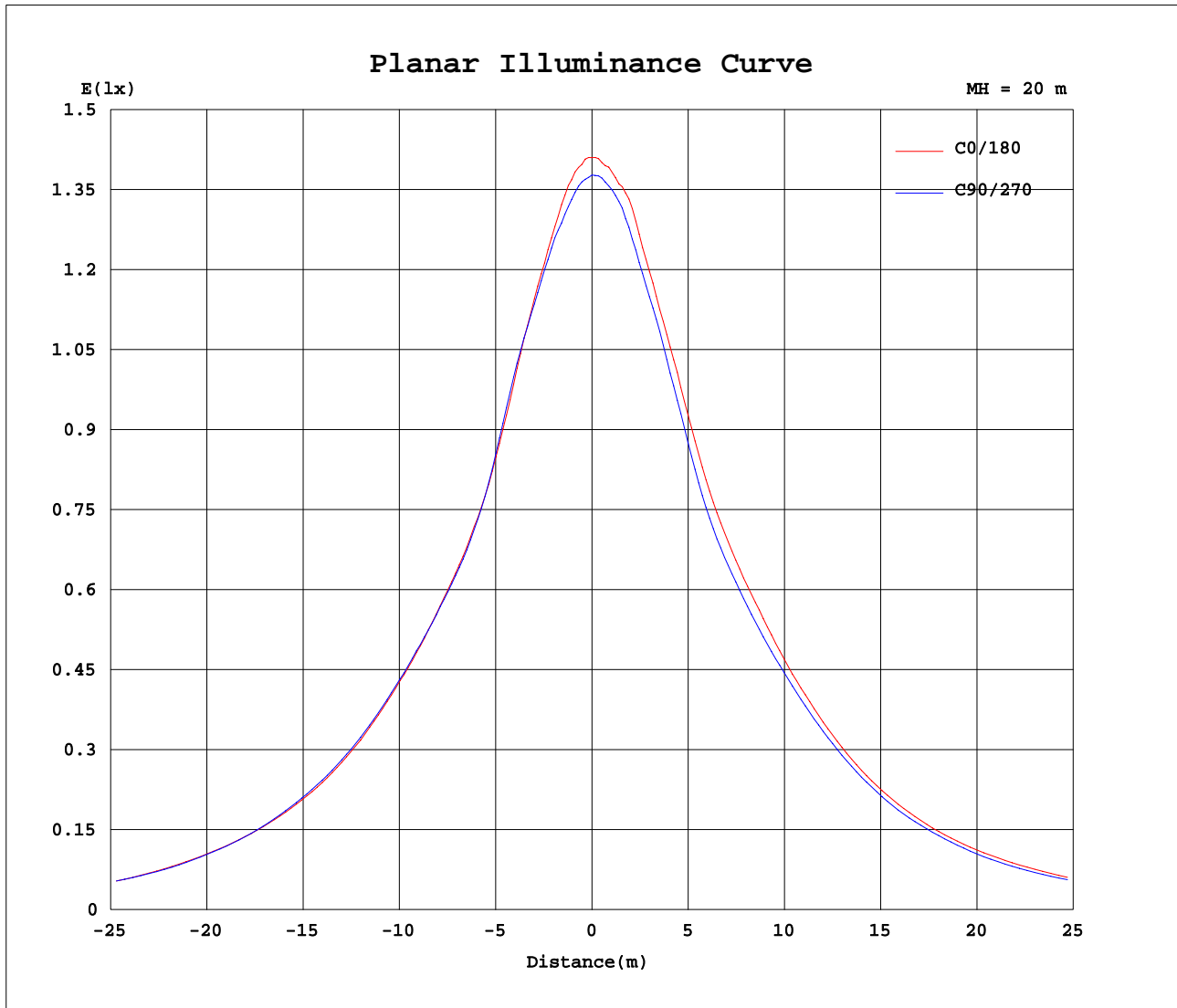
AvgL	cd/m2
L_0~180(65)av	773
L_0~180(75)av	441
L_0~180(85)av	199
L_90~270(65)av	747
L_90~270(75)av	367
L_90~270(85)av	18
L_45(65)av	758
L_45(75)av	377
L_45(85)av	39

Standard: GB/T 29293-2012

C Range: 0 - 360DEG
 C Interval: 45.0DEG
 Test Speed: MEDIUM
 Temperature:25.3DEG
 Operators:fu
 Test Date:09 August 2022

γ Range: 0 - 90DEG
 γ Interval: 0.5DEG
 Test System:EVERFINE GO-i300_V1 SYSTEM V2.0.406.11
 Humidity:65.0%
 Test Distance:3.161m [K=1.0000]
 Remarks:

Planar Illuminance Curve



C Range: 0 - 360DEG
 C Interval: 45.0DEG
 Test Speed: MEDIUM
 Temperature: 25.3DEG
 Operators: fu
 Test Date: 09 August 2022

γ Range: 0 - 90DEG
 γ Interval: 0.5DEG
 Test System: EVERFINE GO-i300_V1 SYSTEM V2.0.406.11
 Humidity: 65.0%
 Test Distance: 3.161m [K=1.0000]
 Remarks:

