

Report No.:

Test Time: 2022/5/7 9:23:05

LUMINAIRE PHOTOMETRIC TEST REPORT

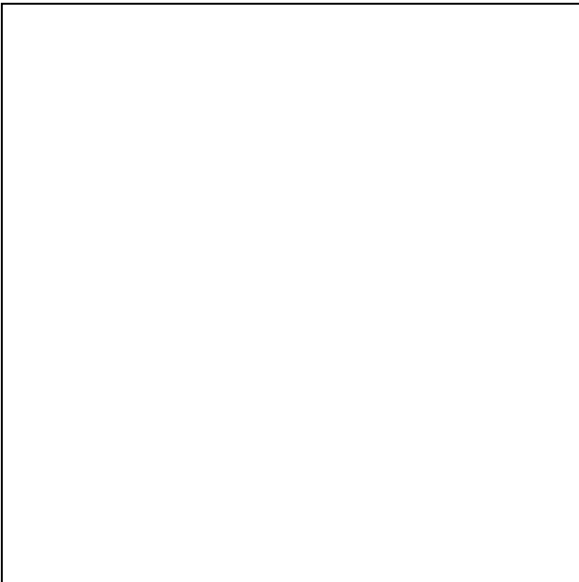
Luminaire Property

Manufacturer: 0	Voltage(V): 219.60 V
Luminaire Type: 6379-6380 6385-6386 38°	Current(A): 0.0730 A
8W Lamp Type:	Power(W): 8.38 W
Luminous Width: 0 mm	Power Factor: 0.5220
Luminous Length: 0 mm	Lamp Luminous Flux: 407.22
Luminous Height: 0 mm	

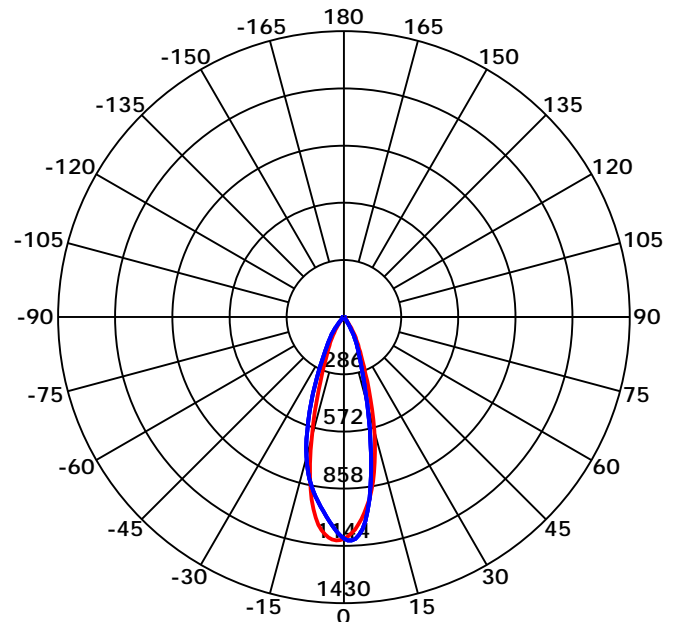
Photometric Results

CIE Class: Direct	Max. Intensity: 1144.06 cd
Luminaire Luminous Flux: 407.2205 lm	Max. Intensity Angle: C=120 Gamma=3
Downward Ratio: 100.00%	Upward Ratio: 0.00%
Luminaire Efficacy Rating(LER): 48.60 lm/W	Efficacy: 100.00%
Beam Angle(50%) C0-180,C90-270: 31.5,31.9	Center Intensity: 1109.11 cd
Field Angle(10%) C0-180,C90-270: 61.0,62.2	Effective Luminous Flux: 359.10 lm
S/MH C0-180,C90-270: 0.536,0.536	ERP(φ use)(120deg): 405.14 lm

Picture of Luminaire



Luminous Intensity Distribution Curve



Beam Angle(50%) C0-180,C90-270: 31.5 deg,31.9 deg

C0-180 ——— C90-270 ———

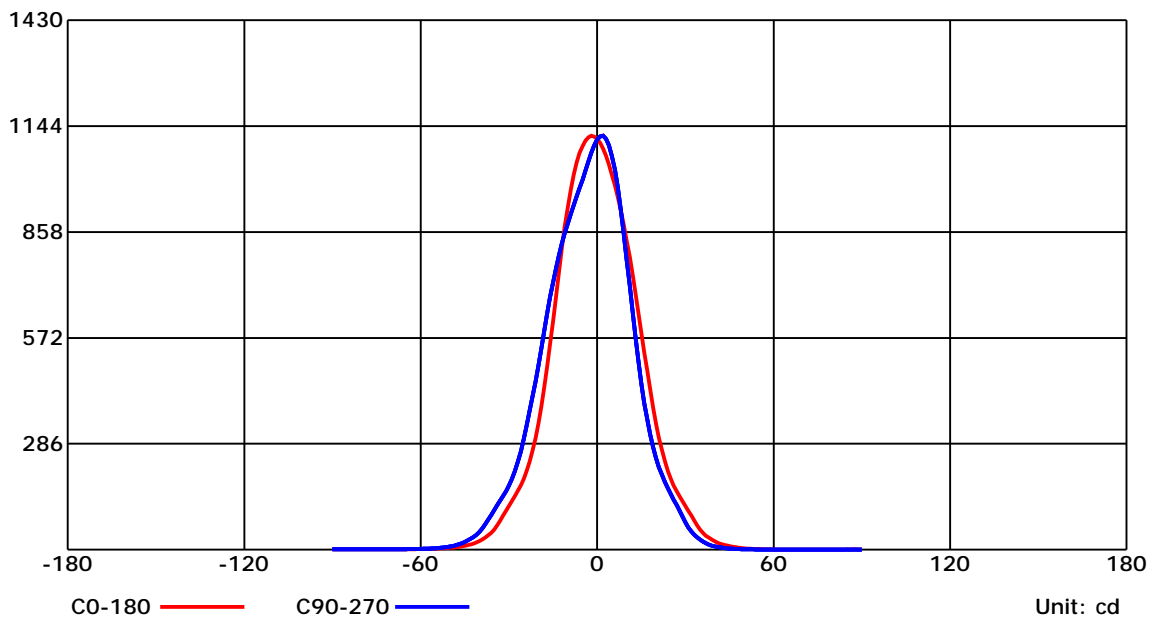
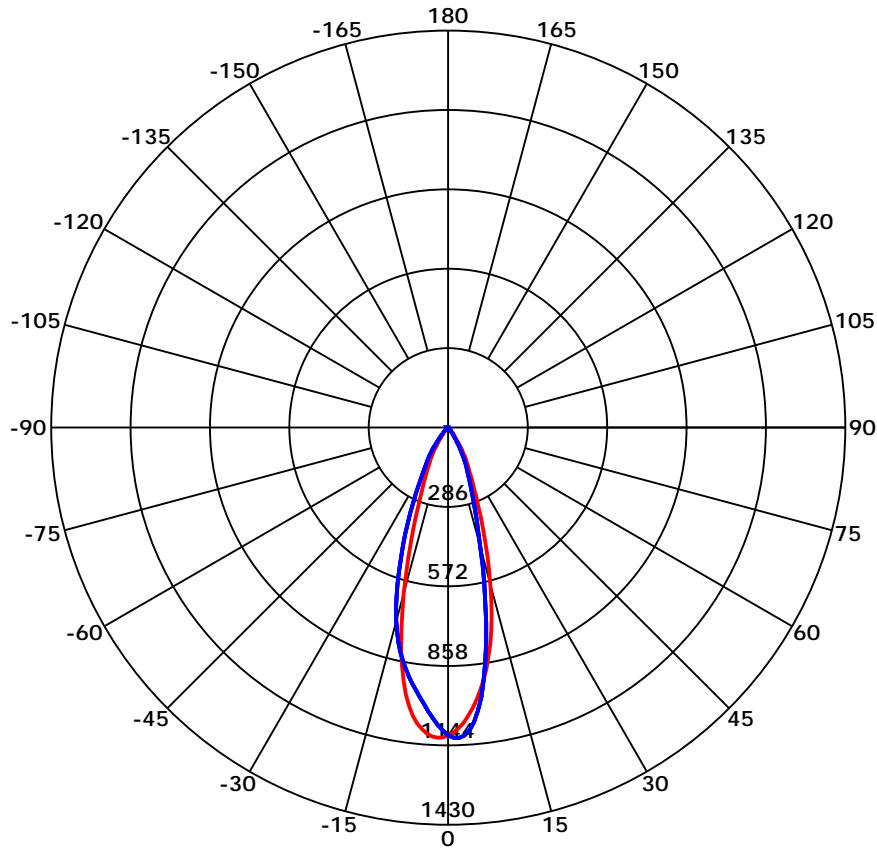
C Range: 0 - 360 Deg
 C Interval: 30.0 Deg
 Test Speed: High
 Temperature: 6.15
 Operators:
 Test Date: 2022/5/7 9:23:05

G Range: 0 - 90 Deg
 G Interval: 1.0 Deg
 Test System: Huipu CPM-1800B Goniophotometer
 Humidity: 1
 Test Distance: 6.15 m
 Remarks:

Report No.:

Test Time: 2022/5/7 9:23:05

Luminous Intensity Distribution Curve



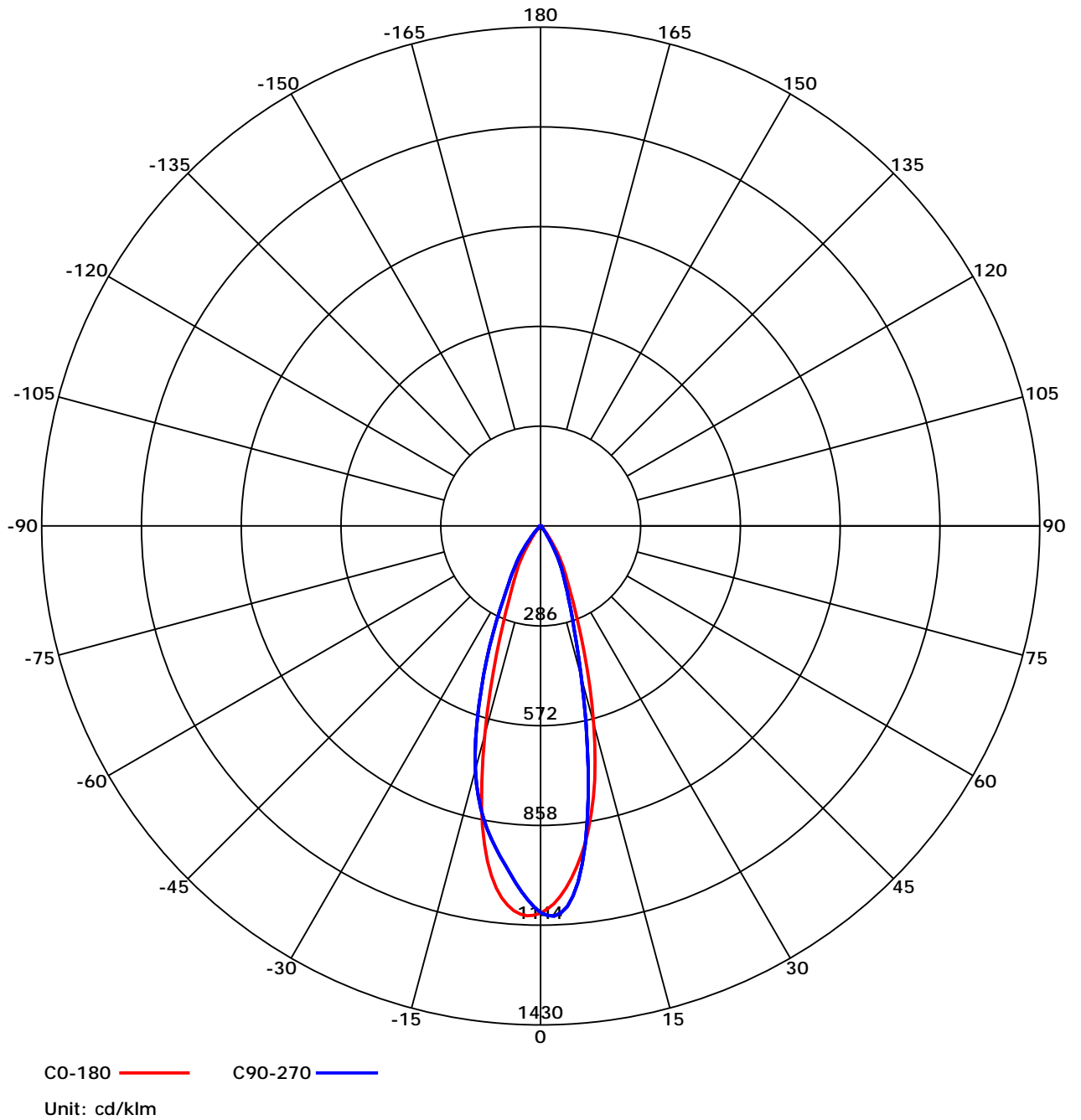
C Range: 0 - 360 Deg
 C Interval: 30.0 Deg
 Test Speed: High
 Temperature: 6.15
 Operators:
 Test Date: 2022/5/7 9:23:05

G Range: 0 - 90 Deg
 G Interval: 1.0 Deg
 Test System: Huipu CPM-1800B Goniophotometer
 Humidity: 1
 Test Distance: 6.15 m
 Remarks:

Report No.:

Test Time: 2022/5/7 9:23:05

Luminous Intensity Distribution Curve



C Range: 0 - 360 Deg
 C Interval: 30.0 Deg
 Test Speed: High
 Temperature: 6.15
 Operators:
 Test Date: 2022/5/7 9:23:05

G Range: 0 - 90 Deg
 G Interval: 1.0 Deg
 Test System: Huipu CPM-1800B Goniophotometer
 Humidity: 1
 Test Distance: 6.15 m
 Remarks:

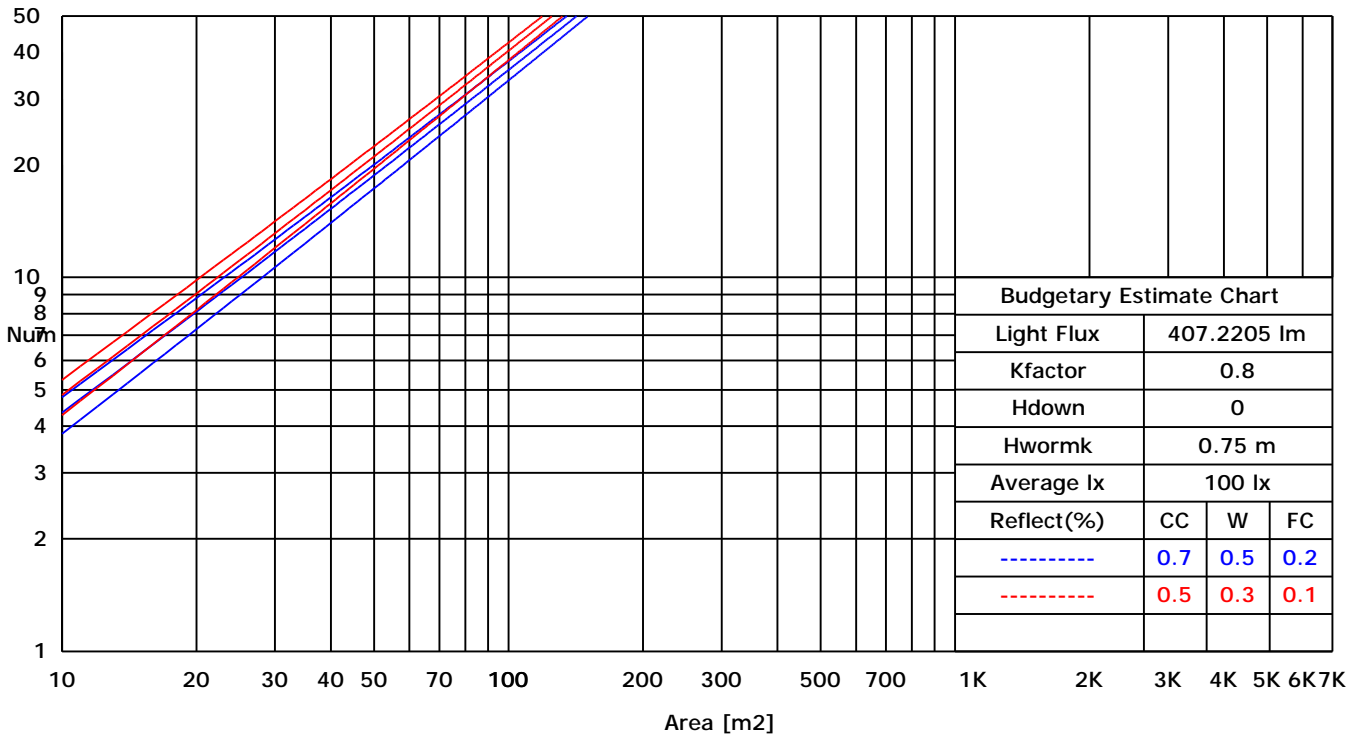
Report No.:

Test Time: 2022/5/7 9:23:05

UTILIZATION FACTORS TABLE

RHOCC	80			70			50			30			10			0
RHOW	50	30	10	50	30	10	50	30	10	50	30	10	50	30	10	0
RCR	COEFFICIENTS OF UTILIZATION FOR RHOFC=20															
0	1.19	1.19	1.19	1.16	1.16	1.16	1.11	1.11	1.11	1.06	1.06	1.06	1.02	1.02	1.02	1.00
1	0.96	0.93	0.91	0.95	0.92	0.89	0.92	0.89	0.86	0.88	0.84	0.81	0.82	0.79	0.76	0.70
2	0.92	0.90	0.88	0.91	0.88	0.86	0.89	0.85	0.83	0.85	0.82	0.78	0.80	0.77	0.73	0.69
3	0.89	0.87	0.85	0.88	0.86	0.84	0.86	0.83	0.80	0.83	0.79	0.76	0.79	0.75	0.71	0.67
4	0.86	0.84	0.83	0.86	0.83	0.81	0.83	0.80	0.78	0.81	0.77	0.74	0.77	0.73	0.69	0.65
5	0.84	0.82	0.81	0.83	0.81	0.79	0.81	0.78	0.76	0.79	0.75	0.72	0.75	0.71	0.68	0.64
6	0.82	0.80	0.79	0.81	0.79	0.77	0.79	0.76	0.74	0.77	0.73	0.70	0.74	0.69	0.66	0.62
7	0.80	0.79	0.78	0.79	0.77	0.76	0.77	0.74	0.72	0.75	0.71	0.68	0.72	0.68	0.65	0.61
8	0.78	0.77	0.76	0.77	0.75	0.74	0.75	0.73	0.71	0.73	0.70	0.67	0.71	0.66	0.63	0.60
9	0.77	0.75	0.74	0.76	0.74	0.73	0.74	0.71	0.69	0.72	0.68	0.66	0.69	0.65	0.62	0.59
10	0.75	0.74	0.73	0.74	0.72	0.71	0.72	0.70	0.68	0.70	0.67	0.64	0.68	0.64	0.61	0.57

LUMINAIRE BUDGETARY ESTIMATE DIAGRAM



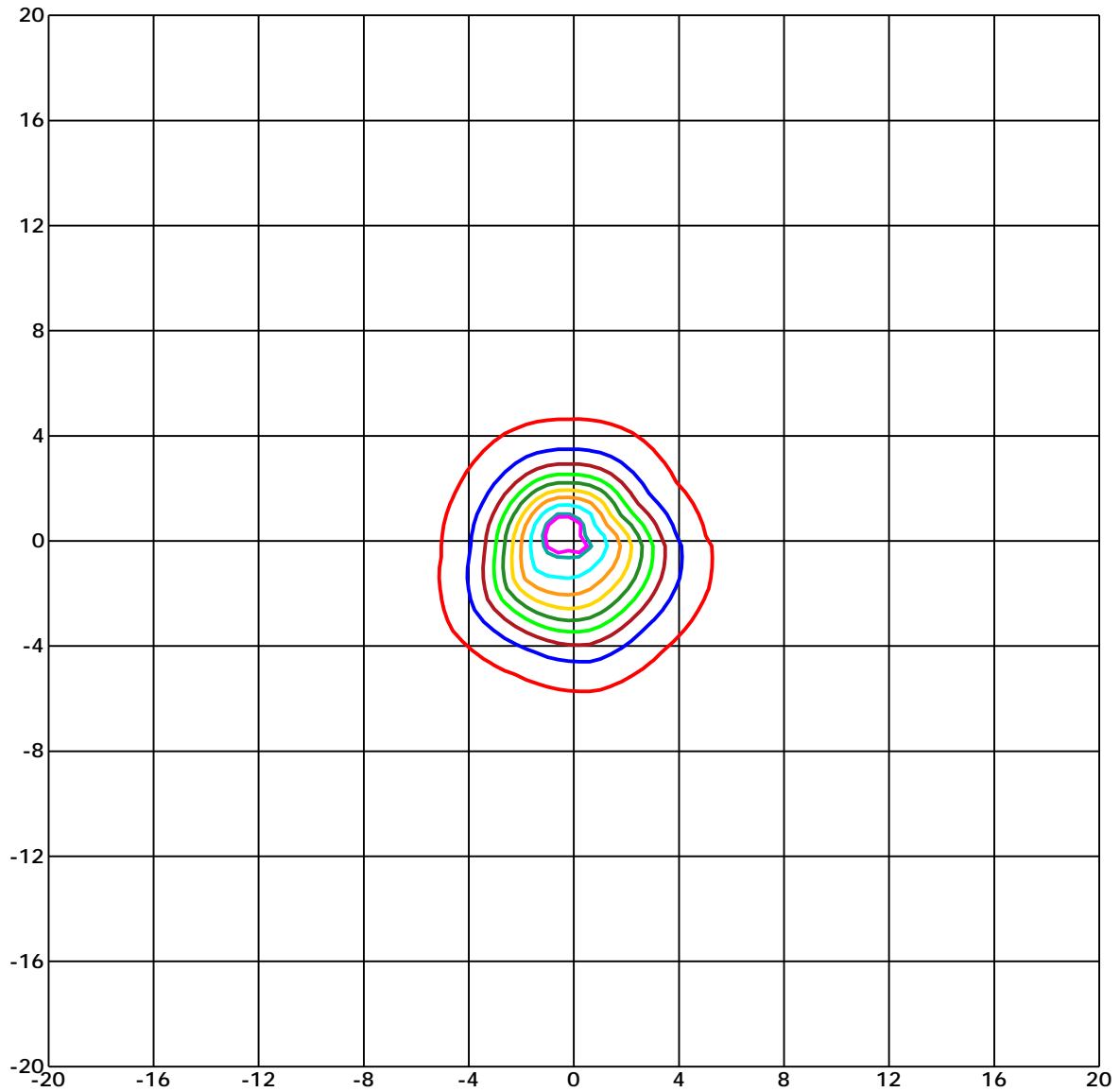
C Range: 0 - 360 Deg
 C Interval: 30.0 Deg
 Test Speed: High
 Temperature: 6.15
 Operators:
 Test Date: 2022/5/7 9:23:05

G Range: 0 - 90 Deg
 G Interval: 1.0 Deg
 Test System: Huipu CPM-1800B Goniophotometer
 Humidity: 1
 Test Distance: 6.15 m
 Remarks:

Report No.:

Test Time: 2022/5/7 9:23:05

ISOLX DIAGRAM



Unit of illumination: lx Height of plane: 10.0(m)/32.81(ft)

— 10.503(1%E _{max})	— 5.708(0%E _{max})
— 10.274(1%E _{max})	— 4.566(0%E _{max})
— 9.133(1%E _{max})	— 3.425(0%E _{max})
— 7.991(1%E _{max})	— 2.283(0%E _{max})
— 6.85(1%E _{max})	— 1.142(0%E _{max})

C Range: 0 - 360 Deg
 C Interval: 30.0 Deg
 Test Speed: High
 Temperature: 6.15
 Operators:
 Test Date: 2022/5/7 9:23:05

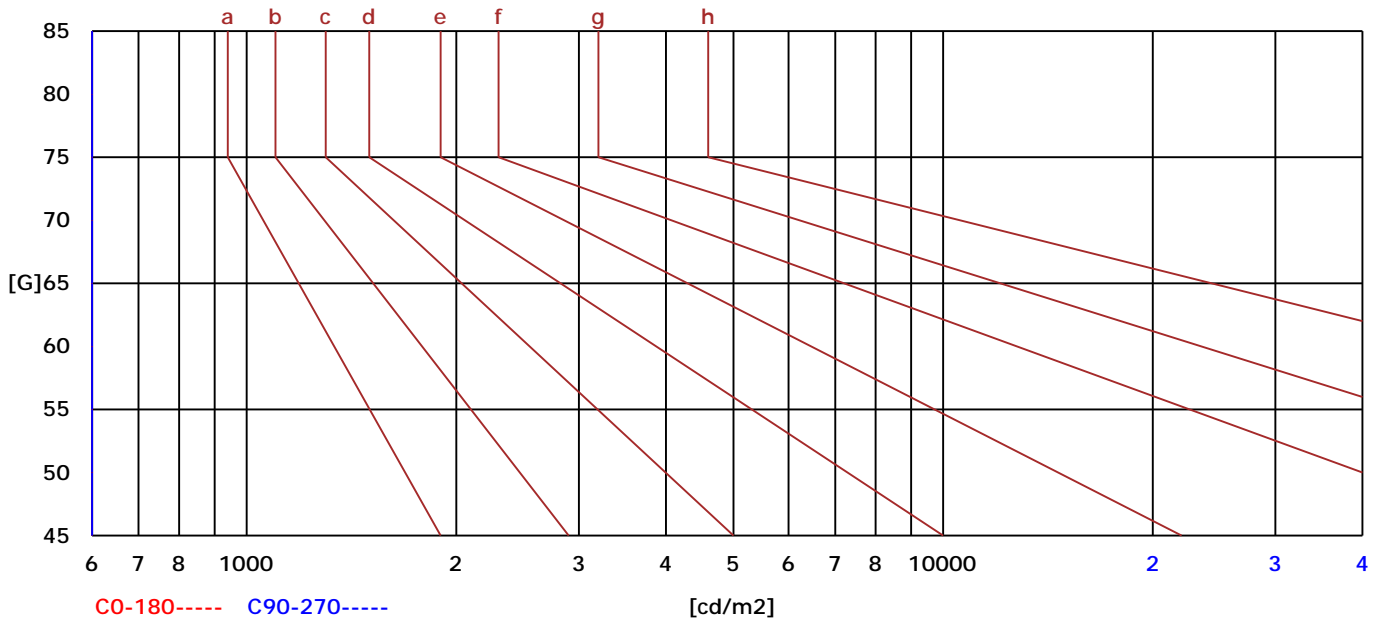
G Range: 0 - 90 Deg
 G Interval: 1.0 Deg
 Test System: Huipu CPM-1800B Goniophotometer
 Humidity: 1
 Test Distance: 6.15 m
 Remarks:

Report No.:

Test Time: 2022/5/7 9:23:05

BRIGHT LIMIT DIAGRAM

C/G	45	50	55	60	65	70	75	80	85
C0	154	63	15	2	2	0	0	5	11
C90	258	150	92	76	69	77	84	109	195
Dazzle	Quality	Illuminance	---	---	---	---	---	---	---
1.15	A	2000	1000	500	<=300				
1.5	B		2000	1000	500	<=300			
1.85	C			2000	1000	500	<=300		
2.2	D				2000	1000	500	<=300	
2.55	E					2000	1000	500	<=300
---	---	a	b	c	d	e	f	g	h



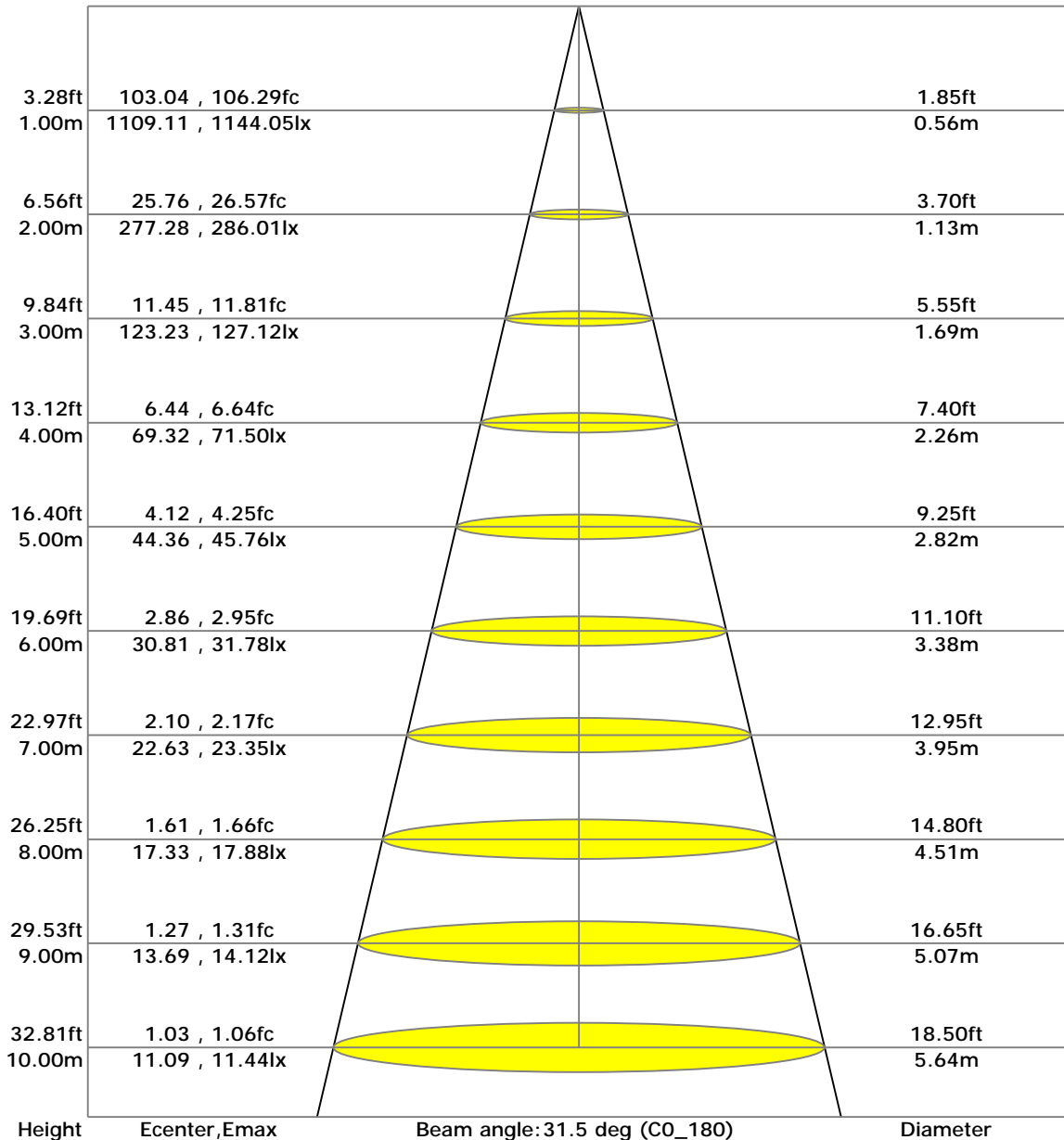
C Range: 0 - 360 Deg
 C Interval: 30.0 Deg
 Test Speed: High
 Temperature: 6.15
 Operators:
 Test Date: 2022/5/7 9:23:05

G Range: 0 - 90 Deg
 G Interval: 1.0 Deg
 Test System: Huipu CPM-1800B Goniophotometer
 Humidity: 1
 Test Distance: 6.15 m
 Remarks:

Report No.:

Test Time: 2022/5/7 9:23:05

LX-DISTANCE DIAGRAM



C Range: 0 - 360 Deg
 C Interval: 30.0 Deg
 Test Speed: High
 Temperature: 6.15
 Operators:
 Test Date: 2022/5/7 9:23:05

G Range: 0 - 90 Deg
 G Interval: 1.0 Deg
 Test System: Huipu CPM-1800B Goniophotometer
 Humidity: 1
 Test Distance: 6.15 m
 Remarks:

Report No.:

Test Time: 2022/5/7 9:23:05

UGR(Unified Glare Rating) TABLE

RHOCC	70	70	50	50	30	70	70	50	50	30
RHOW	50	30	50	30	30	50	30	50	30	30
RHOF	20	20	20	20	20	20	20	20	20	20
Room Size X Y	Viewed Endwise					Viewed Crosswise				
2H 2H	1.79	1.84	1.99	2.03	2.27	1.98	2.03	2.18	2.22	2.46
3H	1.78	1.83	1.98	2.02	2.27	1.95	2.01	2.16	2.20	2.45
4H	1.77	1.82	1.98	2.02	2.26	1.94	2.00	2.15	2.19	2.44
6H	1.75	1.81	1.97	2.01	2.26	1.93	1.98	2.14	2.18	2.43
8H	1.74	1.80	1.96	2.00	2.25	1.92	1.97	2.14	2.18	2.43
12H	1.73	1.79	1.96	2.00	2.25	1.91	1.96	2.13	2.17	2.42
4H 2H	1.77	1.83	1.98	2.02	2.27	2.06	2.11	2.27	2.31	2.56
3H	1.76	1.81	1.98	2.02	2.27	2.06	2.11	2.28	2.32	2.57
4H	1.75	1.81	1.98	2.02	2.28	2.04	2.10	2.27	2.31	2.57
6H	1.75	1.80	1.99	2.02	2.29	2.02	2.08	2.26	2.30	2.56
8H	1.74	1.80	1.99	2.02	2.29	2.01	2.07	2.26	2.29	2.56
12H	1.73	1.79	1.98	2.02	2.29	2.00	2.05	2.25	2.29	2.55
8H 4H	1.87	1.93	2.09	2.13	2.38	2.08	2.14	2.30	2.34	2.59
6H	1.86	1.91	2.12	2.15	2.42	2.21	2.26	2.47	2.50	2.78
8H	1.87	1.92	2.13	2.17	2.44	2.21	2.26	2.47	2.50	2.78
12H	1.89	1.94	2.16	2.19	2.47	2.19	2.24	2.46	2.50	2.78
12H 4H	2.02	2.07	2.27	2.30	2.57	2.23	2.29	2.48	2.52	2.79
6H	2.02	2.07	2.29	2.32	2.60	2.33	2.38	2.59	2.63	2.90

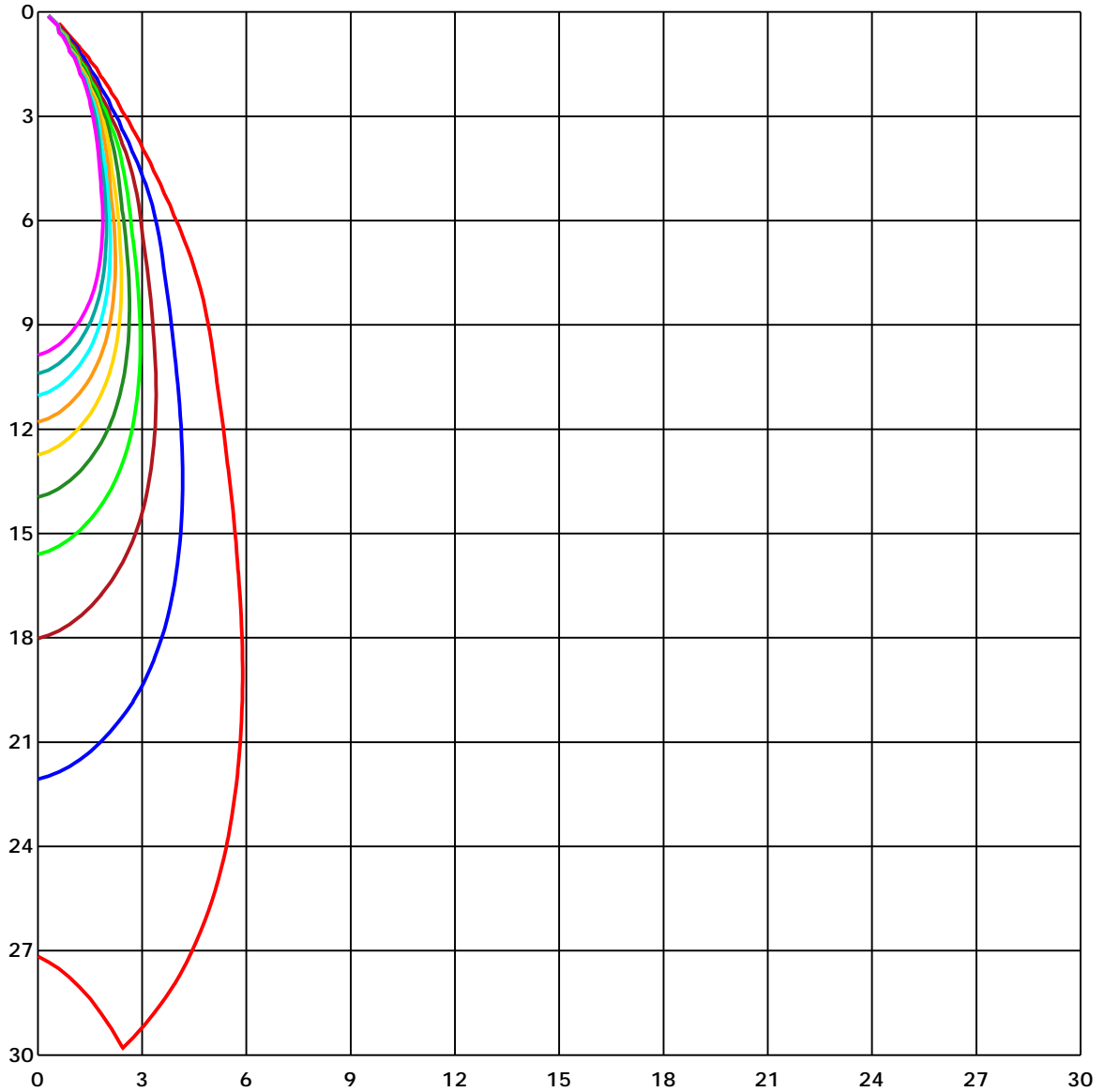
C Range: 0 - 360 Deg
 C Interval: 30.0 Deg
 Test Speed: High
 Temperature: 6.15
 Operators:
 Test Date: 2022/5/7 9:23:05

G Range: 0 - 90 Deg
 G Interval: 1.0 Deg
 Test System: Huipu CPM-1800B Goniophotometer
 Humidity: 1
 Test Distance: 6.15 m
 Remarks:

Report No.:

Test Time: 2022/5/7 9:23:05

SPACE ISOLX DIAGRAM



Unit of illumination: lx

- | | |
|----------|---------|
| — 11.388 | — 5.694 |
| — 10.25 | — 4.555 |
| — 9.111 | — 3.416 |
| — 7.972 | — 2.278 |
| — 6.833 | — 1.139 |

C Range: 0 - 360 Deg
 C Interval: 30.0 Deg
 Test Speed: High
 Temperature: 6.15
 Operators:
 Test Date: 2022/5/7 9:23:05

G Range: 0 - 90 Deg
 G Interval: 1.0 Deg
 Test System: Huipu CPM-1800B Goniophotometer
 Humidity: 1
 Test Distance: 6.15 m
 Remarks:

Report No.:

Test Time: 2022/5/7 9:23:05

LUMINOUS DISTRIBUTION INTENSITY DATA

Gamma/C	C0	C30	C60	C90	C120	C150	C180	C210	C240	C270
G0	1109.11	1054.61	1081.53	1107.52	1119.47	1123.4	1109.11	1054.61	1081.53	1107.52
G1	1098.29	1042.35	1084.41	1116.86	1135.13	1136.0	1115.88	1060.73	1073.78	1092.05
G2	1082.9	1024.61	1079.61	1118.3	1143.68	1141.71	1117.77	1062.4	1061.15	1071.97
G3	1063.61	1002.67	1067.46	1109.9	1144.06	1141.07	1114.02	1059.86	1046.25	1049.23
G4	1039.97	974.12	1047.95	1092.5	1134.45	1131.88	1105.02	1054.79	1028.73	1024.91
G5	1013.08	939.25	1019.2	1064.14	1115.08	1113.72	1090.23	1045.83	1010.24	999.95
G6	983.2	899.04	982.52	1025.86	1084.56	1087.66	1071.21	1035.2	991.4	976.54
G7	951.2	853.2	937.73	977.14	1044.81	1053.51	1045.68	1022.46	972.64	953.51
G8	916.89	801.46	884.1	918.86	993.56	1008.35	1012.62	1007.33	952.9	930.43
G9	878.47	745.71	825.14	854.07	933.31	956.15	973.06	990.5	931.83	907.02
G10	836.22	688.1	762.54	784.89	867.27	895.79	926.73	969.77	909.67	882.47
G11	791.81	630.31	697.83	714.54	797.49	831.53	874.65	944.58	884.67	855.62
G12	744.04	570.82	633.15	643.29	725.44	760.53	815.91	914.43	856.79	827.41
G13	693.1	514.61	568.43	574.41	653.04	691.05	751.08	879.83	823.81	795.63
G14	640.45	460.98	507.09	510.23	583.64	621.2	685.23	838.83	787.99	761.52
G15	587.42	410.19	450.84	449.97	519.27	554.18	619.99	793.18	747.07	723.85
G16	534.58	364.38	399.07	397.33	458.22	491.09	555.42	741.02	700.89	682.32
G17	483.03	323.0	353.91	351.45	404.74	433.14	495.13	684.36	652.02	637.91
G18	432.42	286.62	314.34	310.9	357.95	380.95	439.54	626.11	599.49	591.35
G19	384.39	255.38	279.7	276.97	317.33	334.84	387.64	568.51	544.83	544.23
G20	340.59	227.77	250.38	247.43	282.42	294.75	341.92	514.12	490.48	498.61
G21	302.13	204.73	225.38	222.59	253.07	261.39	301.6	464.12	439.12	454.82
G22	268.31	184.91	204.13	201.63	228.3	233.18	266.69	418.2	390.14	413.06
G23	238.7	168.12	186.01	182.99	207.04	209.31	237.41	376.3	344.3	374.22
G24	212.98	152.58	169.44	165.93	188.24	188.85	212.56	336.77	303.22	335.9
G25	191.87	138.7	154.09	150.34	170.88	171.0	191.57	298.76	268.09	298.99
G26	173.45	124.85	139.53	135.14	154.96	154.69	173.79	263.85	236.96	265.67
G27	157.8	111.39	125.23	120.84	139.87	140.47	158.48	234.27	210.82	236.66
G28	143.61	96.3	109.57	105.07	124.85	126.37	144.6	209.61	189.23	211.92
G29	130.87	81.81	93.95	89.41	109.46	112.52	131.62	189.42	170.77	191.38
G30	118.23	67.78	78.6	74.02	93.76	97.77	118.8	172.32	155.15	173.76
G31	105.26	55.41	64.98	59.76	78.56	83.25	105.49	157.3	141.57	158.36
G32	91.61	46.03	54.12	48.83	64.79	69.29	91.68	144.18	129.05	144.9
G33	78.07	38.31	45.35	40.05	53.9	56.77	78.14	132.3	116.95	132.27
G34	65.05	32.15	38.43	33.02	44.9	46.79	65.55	120.62	105.3	120.01
G35	53.9	27.04	32.53	26.93	37.78	38.84	54.77	109.23	92.67	107.38
G36	44.9	22.58	27.5	21.52	31.66	32.38	46.07	96.56	79.81	94.25

C Range: 0 - 360 Deg
 C Interval: 30.0 Deg
 Test Speed: High
 Temperature: 6.15
 Operators:
 Test Date: 2022/5/7 9:23:05

G Range: 0 - 90 Deg
 G Interval: 1.0 Deg
 Test System: Huipu CPM-1800B Goniophotometer
 Humidity: 1
 Test Distance: 6.15 m
 Remarks:

Report No.:

Test Time: 2022/5/7 9:23:05

LUMINOUS DISTRIBUTION INTENSITY DATA(Continue 1)

GammaC	C0	C30	C60	C90	C120	C150	C180	C210	C240	C270
G37	37.82	18.8	23.0	17.1	26.44	27.04	39.07	84.34	67.29	81.47
G38	31.96	15.62	19.14	13.58	22.09	22.32	33.28	71.94	55.98	69.03
G39	27.01	12.94	16.0	10.74	18.42	18.5	28.29	60.36	46.41	57.94
G40	22.43	10.86	13.54	8.62	15.47	15.13	23.87	50.42	38.88	48.53
G41	18.61	9.19	11.76	7.19	13.09	12.59	20.01	42.59	32.75	41.19
G42	15.62	7.72	10.06	6.01	11.27	10.33	16.83	36.42	27.69	35.17
G43	13.2	6.58	8.66	4.84	9.76	8.66	14.15	30.98	23.87	29.92
G44	11.2	5.26	7.45	3.86	8.47	7.26	12.03	26.48	20.69	25.42
G45	9.53	4.35	6.47	3.06	7.3	6.09	10.36	22.35	17.78	21.18
G46	8.09	3.74	5.71	2.61	6.39	5.03	8.81	19.1	14.94	17.66
G47	6.77	3.21	5.03	2.12	5.71	4.12	7.68	16.23	12.52	14.79
G48	5.52	2.69	4.27	1.74	5.11	3.56	6.43	13.77	10.4	12.18
G49	4.46	2.12	3.82	1.48	4.43	3.03	5.64	11.84	8.77	10.14
G50	3.78	1.63	3.06	1.29	3.86	2.53	5.03	10.25	7.26	8.47
G51	3.25	1.29	2.76	1.06	3.37	1.97	4.43	8.81	6.09	7.22
G52	2.76	1.21	2.69	0.91	2.99	1.48	3.97	7.53	4.73	6.13
G53	2.34	0.79	2.38	0.72	2.69	1.21	3.56	6.51	3.86	5.07
G54	1.97	0.68	2.16	0.53	2.53	0.98	3.21	5.79	3.21	4.58
G55	1.66	0.34	1.74	0.15	2.12	0.72	2.91	5.26	2.72	4.08
G56	1.44	0.25	1.66	0.15	1.85	0.61	2.69	4.54	2.08	3.44
G57	1.25	0.15	1.48	0.11	1.59	0.38	2.42	3.97	1.63	3.03
G58	1.02	0.11	1.51	0.11	1.51	0.11	2.08	3.48	1.29	2.8
G59	0.87	0.11	1.44	0.09	1.44	0.11	1.78	3.1	0.98	2.69
G60	0.42	0.04	1.4	0.08	1.51	0.11	1.63	2.8	0.72	2.34
G61	0.38	0.04	1.36	0.08	1.32	0.11	1.59	2.65	0.53	2.16
G62	0.34	0.04	1.32	0.08	1.29	0.11	1.44	2.19	0.42	1.93
G63	0.34	0.04	1.25	0.08	1.36	0.08	1.44	2.08	0.38	1.74
G64	0.38	0.04	1.21	0.08	1.21	0.08	1.4	1.66	0.19	1.59
G65	0.34	0.04	1.13	0.08	1.17	0.04	1.36	1.59	0.19	1.51
G66	0.3	0.04	1.1	0.08	1.13	0.04	1.32	1.55	0.15	1.48
G67	0.34	0.04	1.06	0.04	1.1	0.04	1.25	1.48	0.15	1.4
G68	0.38	0.0	1.02	0.04	1.1	0.04	1.25	1.4	0.15	1.36
G69	0.38	0.0	0.98	0.04	1.06	0.04	1.21	1.36	0.15	1.32
G70	0.38	0.0	0.95	0.04	1.06	0.04	1.06	1.32	0.15	1.29
G71	0.42	0.0	0.91	0.04	1.02	0.04	1.17	1.29	0.15	1.29
G72	0.45	0.0	0.98	0.04	0.98	0.04	1.02	1.29	0.19	1.29
G73	0.45	0.0	0.98	0.04	0.91	0.04	1.1	1.32	0.19	1.25

C Range: 0 - 360 Deg
 C Interval: 30.0 Deg
 Test Speed: High
 Temperature: 6.15
 Operators:
 Test Date: 2022/5/7 9:23:05

G Range: 0 - 90 Deg
 G Interval: 1.0 Deg
 Test System: Huipu CPM-1800B Goniophotometer
 Humidity: 1
 Test Distance: 6.15 m
 Remarks:

Report No.:

Test Time: 2022/5/7 9:23:05

LUMINOUS DISTRIBUTION INTENSITY DATA(Continue 2)

Gamma\C	C0	C30	C60	C90	C120	C150	C180	C210	C240	C270
G74	0.45	0.0	0.83	0.04	0.98	0.08	1.06	1.25	0.19	1.21
G75	0.49	0.0	0.79	0.04	0.87	0.08	0.87	1.25	0.19	1.21
G76	0.49	0.0	0.76	0.04	0.91	0.04	0.98	1.21	0.19	1.13
G77	0.53	0.04	0.76	0.0	0.79	0.06	0.91	1.21	0.19	1.17
G78	0.57	0.04	0.72	0.0	0.79	0.03	0.91	1.21	0.26	1.21
G79	0.57	0.04	0.72	0.0	0.76	0.05	0.83	1.21	0.3	1.1
G80	0.61	0.04	0.68	0.0	0.76	0.08	0.83	1.21	0.3	1.1
G81	0.61	0.04	0.68	0.04	0.72	0.08	0.79	1.17	0.3	1.17
G82	0.61	0.04	0.64	0.04	0.68	0.11	0.76	1.17	0.38	1.06
G83	0.61	0.04	0.64	0.04	0.68	0.11	0.76	1.13	0.38	1.06
G84	0.64	0.04	0.61	0.04	0.68	0.08	0.72	1.1	0.42	1.17
G85	0.68	0.04	0.61	0.04	0.68	0.08	0.72	1.1	0.42	1.17
G86	0.64	0.0	0.72	0.04	0.68	0.11	0.72	1.1	0.4	1.17
G87	0.68	0.0	0.66	0.0	0.61	0.11	0.68	1.1	0.38	1.13
G88	0.72	0.0	0.61	0.0	0.57	0.17	0.72	1.13	0.4	1.02
G89	0.64	0.04	0.57	0.0	0.53	0.15	0.77	0.95	0.42	0.98
G90	0.82	0.12	0.0	0.0	0.0	0.12	0.82	0.95	0.54	0.98

Report No.:

Test Time: 2022/5/7 9:23:05

LUMINOUS DISTRIBUTION INTENSITY DATA(Continue 3)

Gamma/C	C300	C330	C360						
G0	1119.47	1123.4	1109.11						
G1	1098.21	1105.85	1098.29						
G2	1072.34	1084.18	1082.9						
G3	1045.11	1059.11	1063.61						
G4	1015.76	1031.72	1039.97						
G5	987.21	1002.45	1013.08						
G6	959.33	971.77	983.2						
G7	930.4	940.19	951.2						
G8	902.33	908.16	916.89						
G9	873.55	874.95	878.47						
G10	843.86	839.74	836.22						
G11	811.71	803.54	791.81						
G12	778.69	764.7	744.04						
G13	742.0	722.64	693.1						
G14	703.46	677.97	640.45						
G15	660.31	631.41	587.42						
G16	614.69	583.53	534.58						
G17	568.47	535.98	483.03						
G18	520.89	488.44	432.42						
G19	471.95	442.49	384.39						
G20	423.95	399.29	340.59						
G21	378.79	360.22	302.13						
G22	336.73	325.24	268.31						
G23	298.31	294.98	238.7						
G24	264.42	266.84	212.98						
G25	235.18	240.32	191.87						
G26	209.88	215.44	173.45						
G27	188.92	194.18	157.8						
G28	170.73	176.1	143.61						
G29	155.07	160.71	130.87						
G30	141.38	146.98	118.23						
G31	128.94	134.42	105.26						
G32	117.06	122.09	91.61						
G33	104.96	109.23	78.07						
G34	92.06	95.62	65.05						
G35	78.94	82.34	53.9						
G36	66.38	69.59	44.9						

C Range: 0 - 360 Deg
 C Interval: 30.0 Deg
 Test Speed: High
 Temperature: 6.15
 Operators:
 Test Date: 2022/5/7 9:23:05

G Range: 0 - 90 Deg
 G Interval: 1.0 Deg
 Test System: Huipu CPM-1800B Goniophotometer
 Humidity: 1
 Test Distance: 6.15 m
 Remarks:

Report No.:

Test Time: 2022/5/7 9:23:05

LUMINOUS DISTRIBUTION INTENSITY DATA(Continue 4)

Gamma\C	C300	C330	C360						
G37	54.99	58.59	37.82						
G38	45.5	49.4	31.96						
G39	38.39	42.06	27.01						
G40	32.41	36.04	22.43						
G41	27.38	30.83	18.61						
G42	23.11	26.4	15.62						
G43	19.86	22.47	13.2						
G44	17.13	19.18	11.2						
G45	14.68	16.23	9.53						
G46	12.41	13.84	8.09						
G47	10.48	12.03	6.77						
G48	8.77	10.33	5.52						
G49	7.49	8.96	4.46						
G50	6.24	7.6	3.78						
G51	5.07	6.58	3.25						
G52	4.16	5.82	2.76						
G53	3.52	5.22	2.34						
G54	2.84	4.61	1.97						
G55	2.42	4.08	1.66						
G56	1.93	3.56	1.44						
G57	1.36	3.14	1.25						
G58	1.13	2.84	1.02						
G59	0.91	2.57	0.87						
G60	0.64	2.31	0.42						
G61	0.49	2.0	0.38						
G62	0.38	1.74	0.34						
G63	0.23	1.63	0.34						
G64	0.23	1.44	0.38						
G65	0.19	1.48	0.34						
G66	0.19	1.44	0.3						
G67	0.19	1.36	0.34						
G68	0.19	1.32	0.38						
G69	0.19	1.29	0.38						
G70	0.19	1.25	0.38						
G71	0.19	1.21	0.42						
G72	0.19	1.21	0.45						
G73	0.23	1.21	0.45						

C Range: 0 - 360 Deg
 C Interval: 30.0 Deg
 Test Speed: High
 Temperature: 6.15
 Operators:
 Test Date: 2022/5/7 9:23:05

G Range: 0 - 90 Deg
 G Interval: 1.0 Deg
 Test System: Huipu CPM-1800B Goniophotometer
 Humidity: 1
 Test Distance: 6.15 m
 Remarks:

Report No.:

Test Time: 2022/5/7 9:23:05

LUMINOUS DISTRIBUTION INTENSITY DATA(Continue 5)

Gamma\C	C300	C330	C360						
G74	0.23	1.17	0.45						
G75	0.26	1.17	0.49						
G76	0.26	1.21	0.49						
G77	0.26	1.17	0.53						
G78	0.26	1.13	0.57						
G79	0.3	1.13	0.57						
G80	0.3	1.13	0.61						
G81	0.34	1.13	0.61						
G82	0.34	1.13	0.61						
G83	0.36	1.13	0.61						
G84	0.38	1.13	0.64						
G85	0.42	1.1	0.68						
G86	0.42	1.06	0.64						
G87	0.42	1.06	0.68						
G88	0.42	1.13	0.72						
G89	0.34	1.02	0.64						
G90	0.34	1.02	0.82						

C Range: 0 - 360 Deg
 C Interval: 30.0 Deg
 Test Speed: High
 Temperature: 6.15
 Operators:
 Test Date: 2022/5/7 9:23:05

G Range: 0 - 90 Deg
 G Interval: 1.0 Deg
 Test System: Huipu CPM-1800B Goniophotometer
 Humidity: 1
 Test Distance: 6.15 m
 Remarks: