

Report No.:

Test Time: 2022/4/21 10:53:29

LUMINAIRE PHOTOMETRIC TEST REPORT

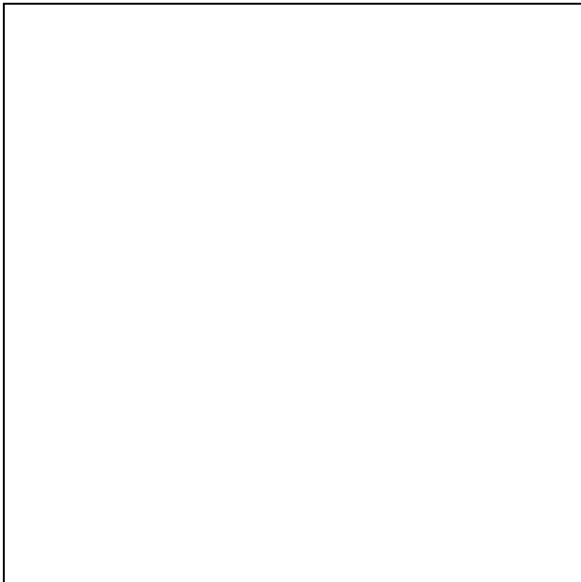
Luminaire Property

Manufacturer: 0	Voltage(V): 219.60 V
Luminaire Type: 6375-6376 6389-6390 -38°-10W	Current(A): 0.0890 A
Lamp Type:	Power(W): 10.41 W
Luminous Width: 0 mm	Power Factor: 0.5280
Luminous Length: 0 mm	Lamp Luminous Flux: 794.25
Luminous Height: 0 mm	

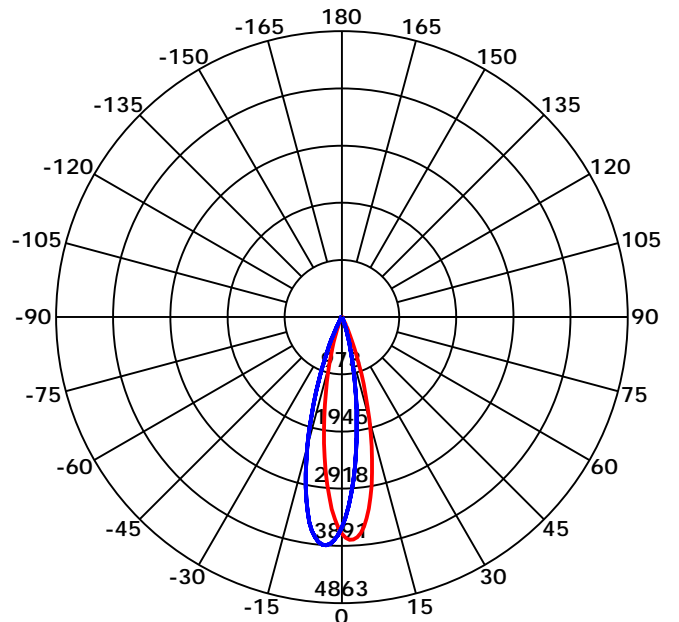
Photometric Results

CIE Class: Direct	Max. Intensity: 3890.57 cd
Luminaire Luminous Flux: 794.2465 lm	Max. Intensity Angle: C=270 Gamma=4
Downward Ratio: 100.00%	Upward Ratio: 0.00%
Luminaire Efficacy Rating(LER): 76.28 lm/W	Efficacy: 100.00%
Beam Angle(50%) C0-180,C90-270: 23.8,23.8	Center Intensity: 3681.76 cd
Field Angle(10%) C0-180,C90-270: 42.6,42.0	Effective Luminous Flux: 723.00 lm
S/MH C0-180,C90-270: 0.425,0.425	ERP(ϕ use)(120deg): 794.25 lm

Picture of Luminaire



Luminous Intensity Distribution Curve



Beam Angle(50%) C0-180,C90-270: 23.8 deg,23.8 deg

C0-180 ——— C90-270 ———

C Range: 0 - 360 Deg

C Interval: 45.0 Deg

Test Speed: High

Temperature: 6.15

Operators:

Test Date: 2022/4/21 10:53:29

G Range: 0 - 90 Deg

G Interval: 1.0 Deg

Test System: Huipu CPM-1800B Goniophotometer

Humidity: 1

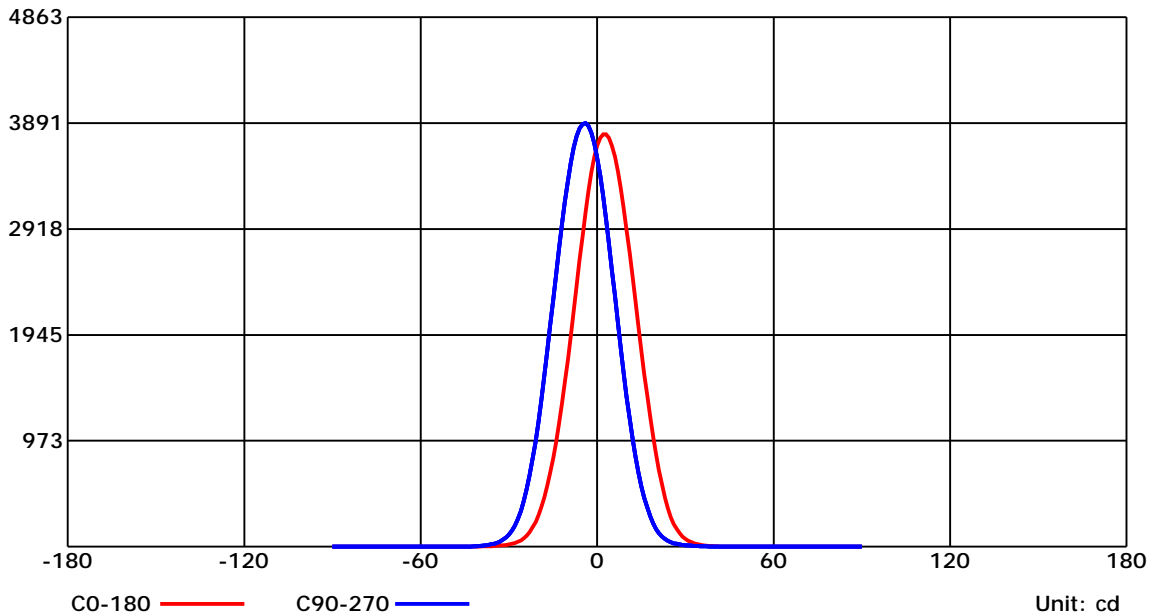
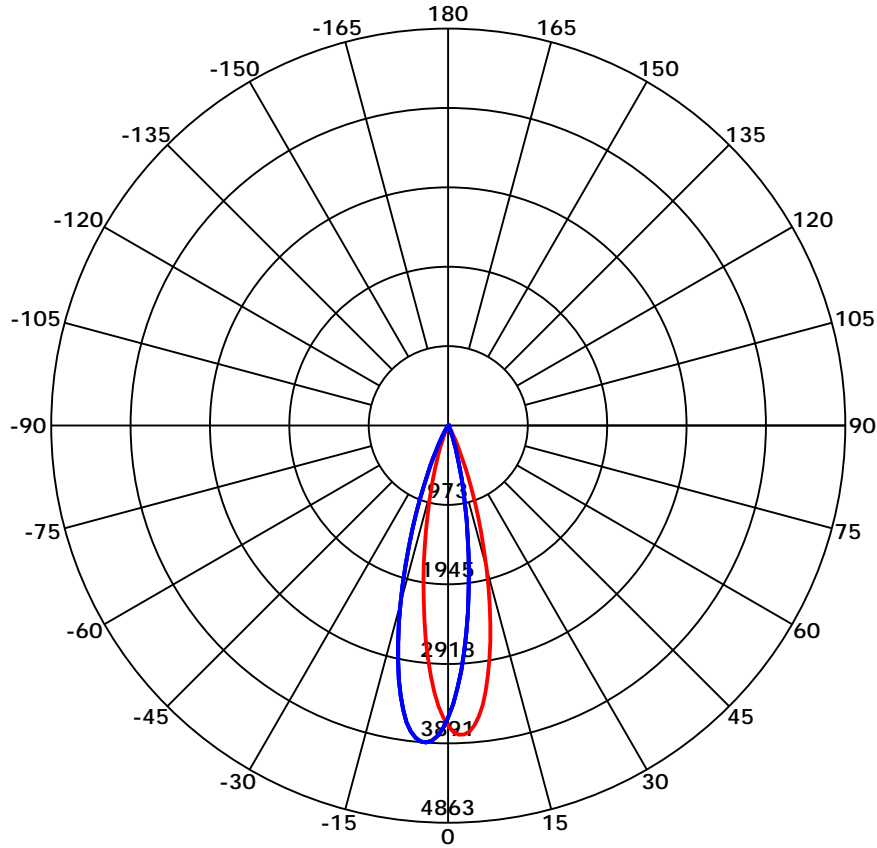
Test Distance: 6.15 m

Remarks:

Report No.:

Test Time: 2022/4/21 10:53:29

Luminous Intensity Distribution Curve



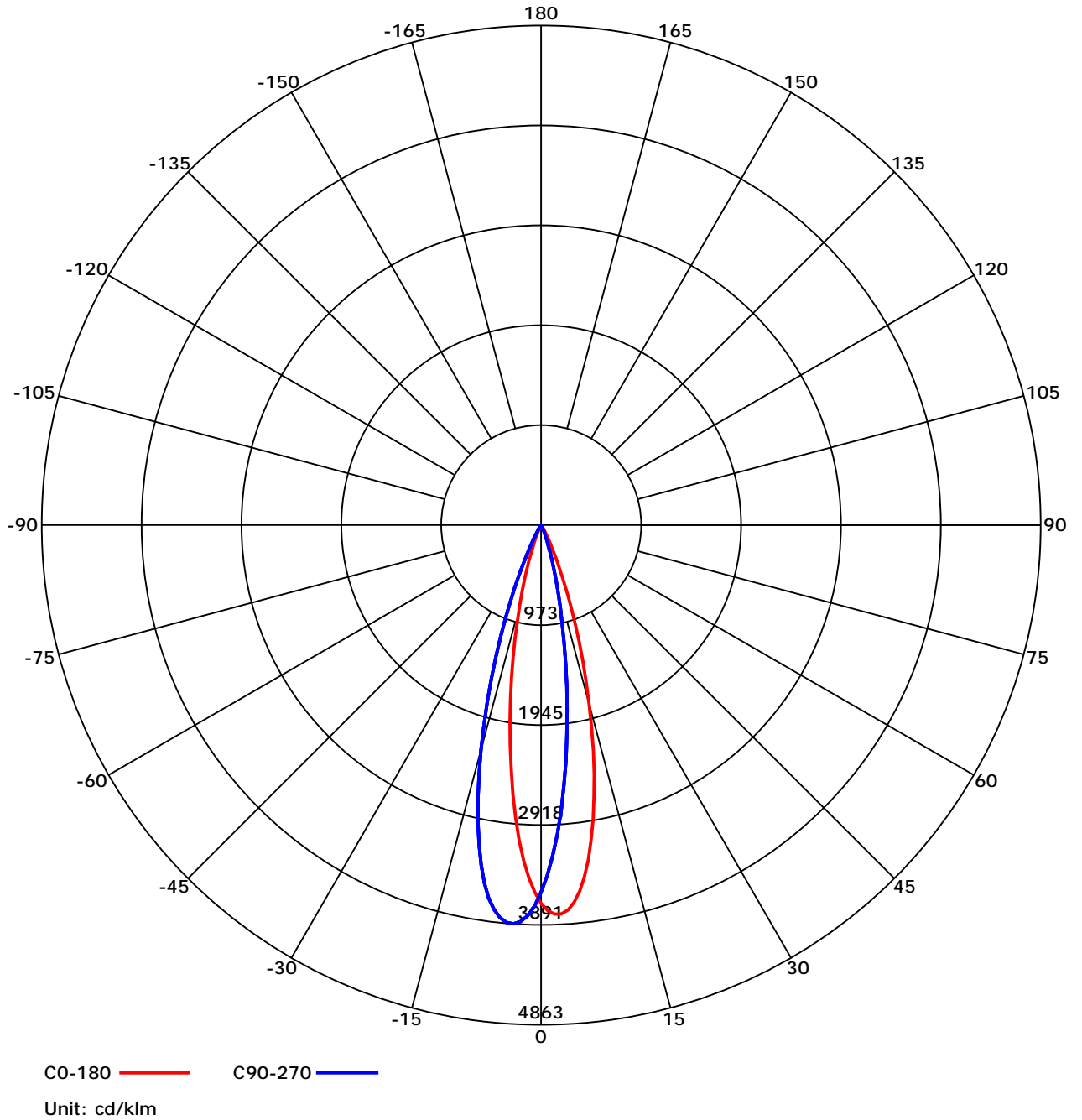
C Range: 0 - 360 Deg
 C Interval: 45.0 Deg
 Test Speed: High
 Temperature: 6.15
 Operators:
 Test Date: 2022/4/21 10:53:29

G Range: 0 - 90 Deg
 G Interval: 1.0 Deg
 Test System: Huipu CPM-1800B Goniophotometer
 Humidity: 1
 Test Distance: 6.15 m
 Remarks:

Report No.:

Test Time: 2022/4/21 10:53:29

Luminous Intensity Distribution Curve



C Range: 0 - 360 Deg

C Interval: 45.0 Deg

Test Speed: High

Temperature: 6.15

Operators:

Test Date: 2022/4/21 10:53:29

G Range: 0 - 90 Deg

G Interval: 1.0 Deg

Test System: Huipu CPM-1800B Goniophotometer

Humidity: 1

Test Distance: 6.15 m

Remarks:

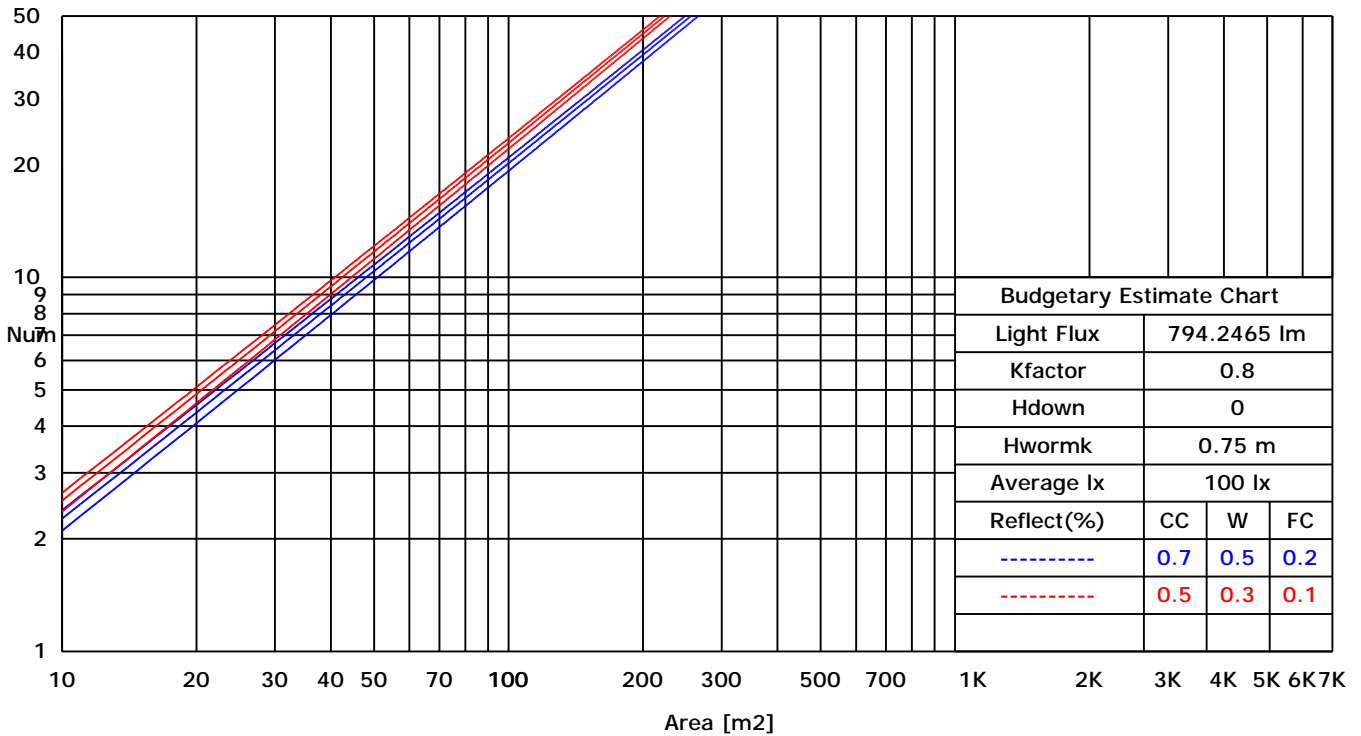
Report No.:

Test Time: 2022/4/21 10:53:29

UTILIZATION FACTORS TABLE

RHOCC	80			70			50			30			10			0
RHOW	50	30	10	50	30	10	50	30	10	50	30	10	50	30	10	0
RCR	COEFFICIENTS OF UTILIZATION FOR RHOFC=20															
0	1.19	1.19	1.19	1.16	1.16	1.16	1.11	1.11	1.11	1.06	1.06	1.06	1.02	1.02	1.02	1.00
1	0.85	0.81	0.78	0.84	0.80	0.77	0.82	0.78	0.74	0.79	0.74	0.70	0.74	0.70	0.65	0.60
2	0.82	0.79	0.77	0.82	0.78	0.75	0.80	0.76	0.72	0.77	0.73	0.69	0.73	0.68	0.64	0.59
3	0.80	0.77	0.75	0.80	0.76	0.74	0.78	0.74	0.71	0.76	0.71	0.67	0.72	0.67	0.63	0.59
4	0.78	0.76	0.74	0.78	0.75	0.73	0.77	0.73	0.70	0.74	0.70	0.66	0.71	0.66	0.62	0.58
5	0.77	0.75	0.74	0.77	0.74	0.72	0.75	0.71	0.69	0.73	0.69	0.65	0.70	0.65	0.61	0.58
6	0.76	0.74	0.73	0.75	0.73	0.71	0.74	0.70	0.68	0.72	0.68	0.64	0.69	0.65	0.61	0.57
7	0.75	0.73	0.72	0.74	0.72	0.70	0.73	0.69	0.67	0.71	0.67	0.64	0.68	0.64	0.60	0.57
8	0.74	0.72	0.71	0.73	0.71	0.70	0.72	0.68	0.66	0.70	0.66	0.63	0.67	0.63	0.59	0.56
9	0.73	0.72	0.71	0.72	0.70	0.69	0.71	0.68	0.66	0.69	0.65	0.62	0.67	0.62	0.59	0.56
10	0.72	0.71	0.70	0.71	0.70	0.68	0.70	0.67	0.65	0.68	0.64	0.62	0.66	0.61	0.58	0.55

LUMINAIRE BUDGETARY ESTIMATE DIAGRAM



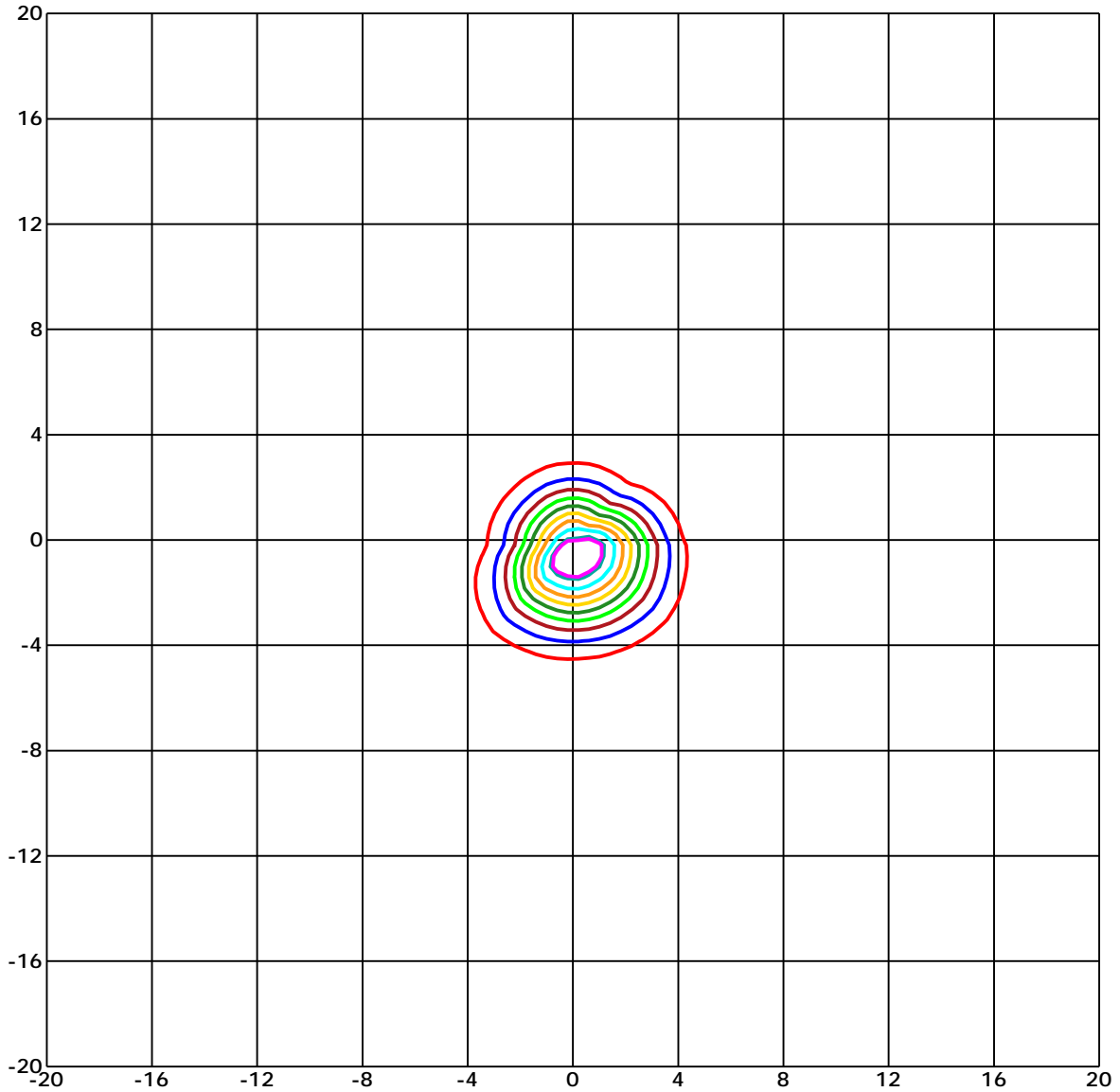
C Range: 0 - 360 Deg
 C Interval: 45.0 Deg
 Test Speed: High
 Temperature: 6.15
 Operators:
 Test Date: 2022/4/21 10:53:29

G Range: 0 - 90 Deg
 G Interval: 1.0 Deg
 Test System: Huipu CPM-1800B Goniophotometer
 Humidity: 1
 Test Distance: 6.15 m
 Remarks:

Report No.:

Test Time: 2022/4/21 10:53:29

ISOLX DIAGRAM



Unit of illumination: lx Height of plane: 10.0(m)/32.81(ft)

- | | |
|-------------------------------|-------------------------------|
| — 35.532(1%E _{max}) | — 19.311(0%E _{max}) |
| — 34.76(1%E _{max}) | — 15.449(0%E _{max}) |
| — 30.898(1%E _{max}) | — 11.587(0%E _{max}) |
| — 27.035(1%E _{max}) | — 7.724(0%E _{max}) |
| — 23.173(1%E _{max}) | — 3.862(0%E _{max}) |

C Range: 0 - 360 Deg
 C Interval: 45.0 Deg
 Test Speed: High
 Temperature: 6.15
 Operators:
 Test Date: 2022/4/21 10:53:29

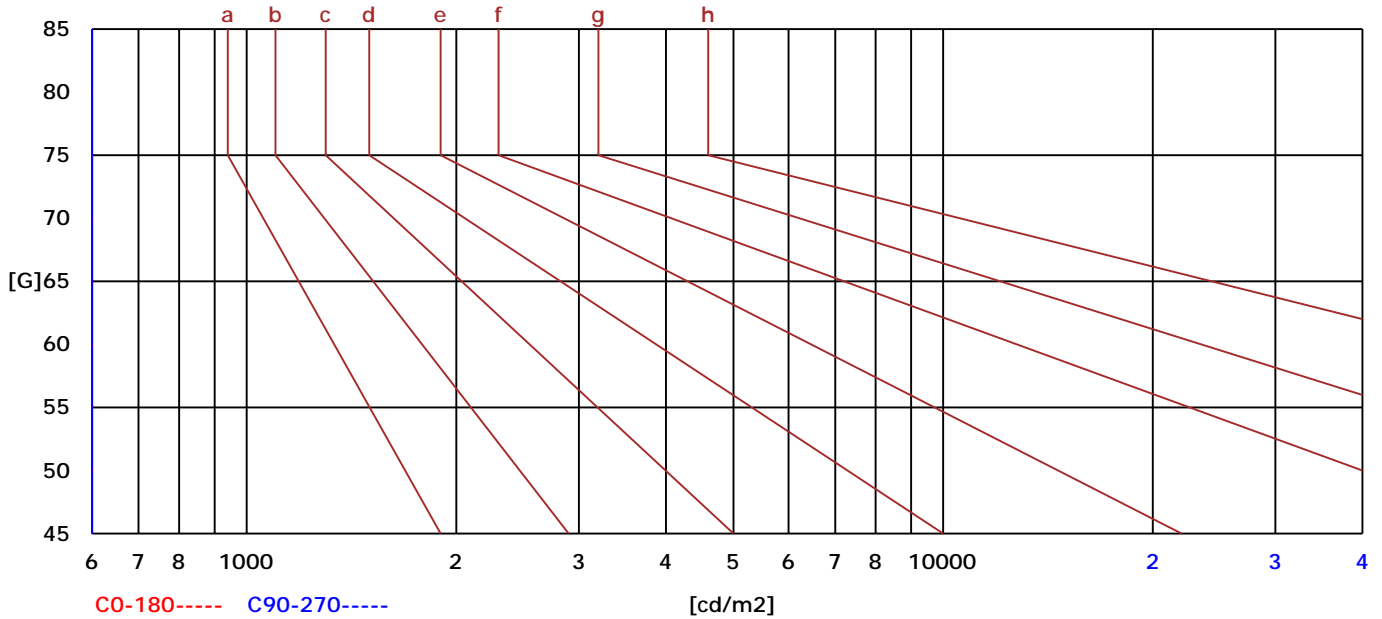
G Range: 0 - 90 Deg
 G Interval: 1.0 Deg
 Test System: Huipu CPM-1800B Goniophotometer
 Humidity: 1
 Test Distance: 6.15 m
 Remarks:

Report No.:

Test Time: 2022/4/21 10:53:29

BRIGHT LIMIT DIAGRAM

C/G	45	50	55	60	65	70	75	80	85
C0	0	0	0	0	0	0	0	0	0
C90	0	0	0	0	0	0	0	0	0
Dazzle	Quality	Illuminance	---	---	---	---	---	---	---
1.15	A	2000	1000	500	<=300				
1.5	B		2000	1000	500	<=300			
1.85	C			2000	1000	500	<=300		
2.2	D				2000	1000	500	<=300	
2.55	E					2000	1000	500	<=300
---	---	a	b	c	d	e	f	g	h



C Range: 0 - 360 Deg

C Interval: 45.0 Deg

Test Speed: High

Temperature: 6.15

Operators:

Test Date: 2022/4/21 10:53:29

G Range: 0 - 90 Deg

G Interval: 1.0 Deg

Test System: Huipu CPM-1800B Goniophotometer

Humidity: 1

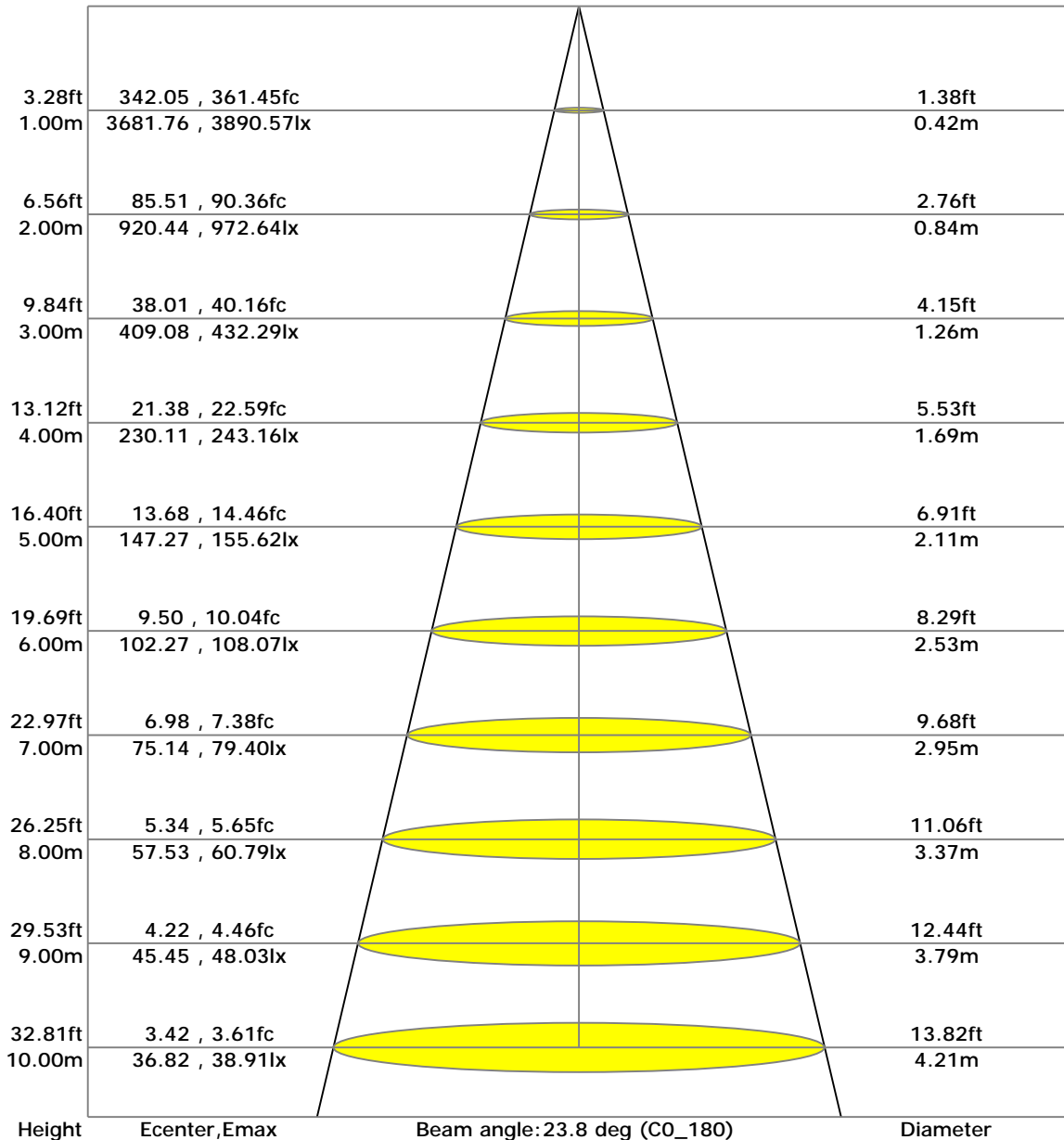
Test Distance: 6.15 m

Remarks:

Report No.:

Test Time: 2022/4/21 10:53:29

LX-DISTANCE DIAGRAM



C Range: 0 - 360 Deg
 C Interval: 45.0 Deg
 Test Speed: High
 Temperature: 6.15
 Operators:
 Test Date: 2022/4/21 10:53:29

G Range: 0 - 90 Deg
 G Interval: 1.0 Deg
 Test System: Huipu CPM-1800B Goniophotometer
 Humidity: 1
 Test Distance: 6.15 m
 Remarks:

Report No.:

Test Time: 2022/4/21 10:53:29

UGR(Unified Glare Rating) TABLE

RHOCC	70	70	50	50	30	70	70	50	50	30
RHOW	50	30	50	30	30	50	30	50	30	30
RHOF	20	20	20	20	20	20	20	20	20	20
Room Size X Y	Viewed Endwise					Viewed Crosswise				
2H 2H	1.18	1.23	1.38	1.42	1.66	1.18	1.23	1.38	1.42	1.66
3H	1.16	1.22	1.36	1.41	1.66	1.16	1.22	1.36	1.41	1.66
4H	1.15	1.21	1.36	1.40	1.65	1.15	1.21	1.36	1.40	1.65
6H	1.13	1.19	1.35	1.39	1.65	1.13	1.19	1.35	1.39	1.65
8H	1.12	1.19	1.34	1.39	1.64	1.12	1.19	1.34	1.39	1.64
12H	1.12	1.18	1.34	1.39	1.64	1.12	1.18	1.34	1.39	1.64
4H 2H	1.15	1.21	1.36	1.40	1.65	1.15	1.21	1.36	1.40	1.65
3H	1.12	1.18	1.34	1.39	1.64	1.12	1.18	1.34	1.39	1.64
4H	1.10	1.16	1.33	1.38	1.64	1.10	1.16	1.33	1.38	1.64
6H	1.08	1.14	1.32	1.36	1.63	1.08	1.14	1.32	1.36	1.63
8H	1.07	1.13	1.31	1.36	1.63	1.07	1.13	1.31	1.36	1.63
12H	1.06	1.12	1.31	1.35	1.62	1.06	1.12	1.31	1.35	1.62
8H 4H	1.12	1.19	1.34	1.39	1.64	1.12	1.19	1.34	1.39	1.64
6H	1.04	1.10	1.30	1.34	1.62	1.04	1.10	1.30	1.34	1.62
8H	1.03	1.09	1.29	1.34	1.61	1.03	1.09	1.29	1.34	1.61
12H	1.01	1.07	1.29	1.33	1.61	1.01	1.07	1.29	1.33	1.61
12H 4H	1.06	1.12	1.31	1.35	1.62	1.06	1.12	1.31	1.35	1.62
6H	1.03	1.09	1.29	1.34	1.61	1.03	1.09	1.29	1.34	1.61

C Range: 0 - 360 Deg
 C Interval: 45.0 Deg
 Test Speed: High
 Temperature: 6.15
 Operators:
 Test Date: 2022/4/21 10:53:29

G Range: 0 - 90 Deg
 G Interval: 1.0 Deg
 Test System: Huipu CPM-1800B Goniophotometer
 Humidity: 1
 Test Distance: 6.15 m
 Remarks:

Report No.:

Test Time: 2022/4/21 10:53:29

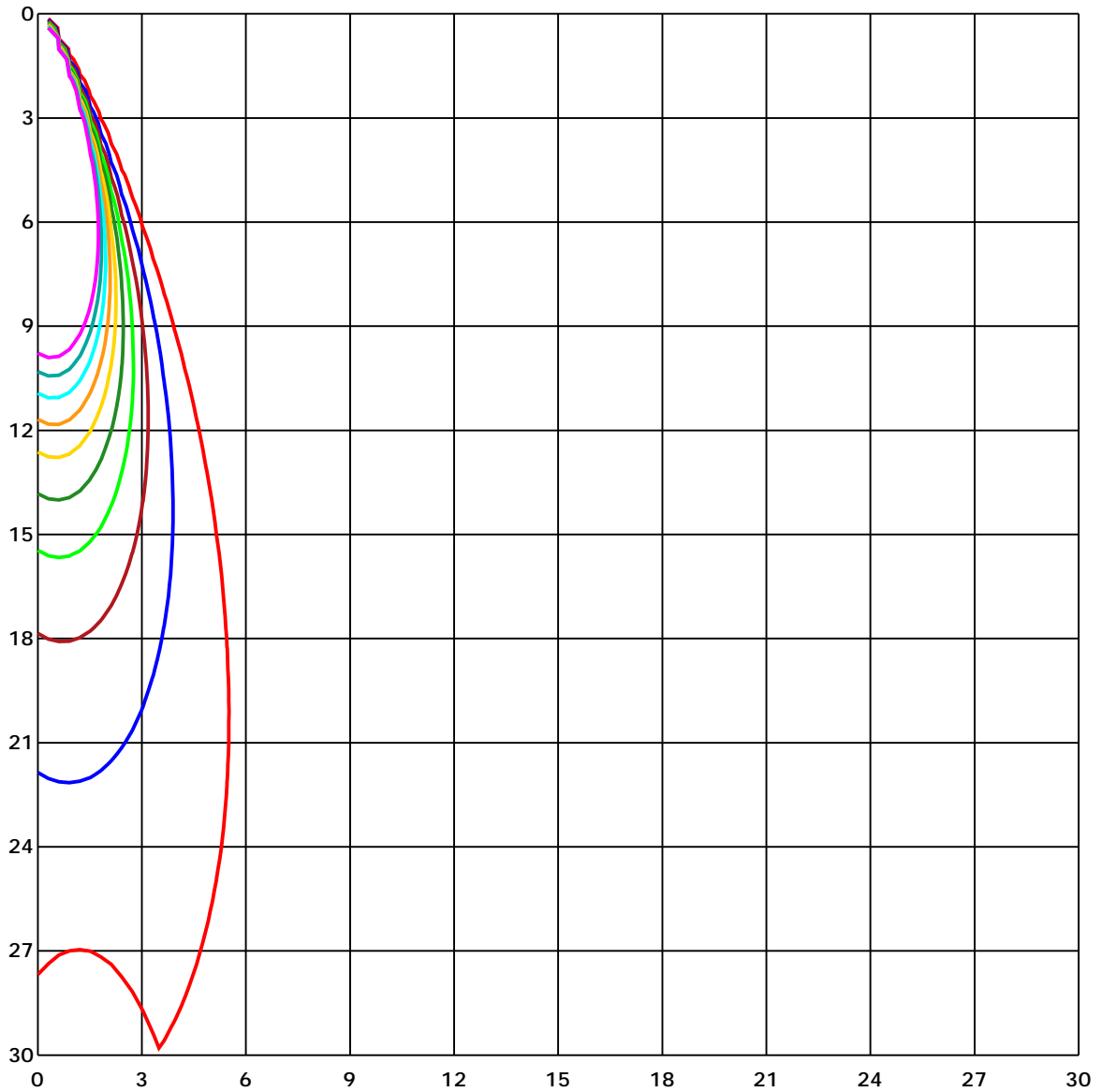
ZONAL LUMINOUS FLUX TABLE

Gamma [deg]	I _{mean} [cd]	Zonal Flux [lm]	Sum Flux [lm]	Zonal Flux [%]	Sum Flux [%]
0	3601.05	0.00	0.00	0.00	0.00
5	3351.61	81.45	81.45	10.25	10.25
10	2542.65	197.62	279.07	24.88	35.14
15	1560.75	216.25	495.32	27.23	62.36
20	771.45	160.55	655.87	20.21	82.58
25	301.58	88.05	743.92	11.09	93.66
30	88.68	34.66	778.58	4.36	98.03
35	23.94	11.16	789.74	1.41	99.43
40	6.47	3.37	793.12	0.42	99.86
45	1.49	0.96	794.08	0.12	99.98
50	0.06	0.17	794.25	0.02	100.00
55	0.00	0.00	794.25	0.00	100.00
60	0.00	0.00	794.25	0.00	100.00
65	0.00	0.00	794.25	0.00	100.00
70	0.00	0.00	794.25	0.00	100.00
75	0.00	0.00	794.25	0.00	100.00
80	0.00	0.00	794.25	0.00	100.00
85	0.00	0.00	794.25	0.00	100.00
90	0.00	0.00	794.25	0.00	100.00

Report No.:

Test Time: 2022/4/21 10:53:29

SPACE ISOLX DIAGRAM



Unit of illumination: lx

- | | |
|----------|----------|
| — 38.524 | — 19.262 |
| — 34.671 | — 15.409 |
| — 30.819 | — 11.557 |
| — 26.967 | — 7.705 |
| — 23.114 | — 3.852 |

C Range: 0 - 360 Deg

C Interval: 45.0 Deg

Test Speed: High

Temperature: 6.15

Operators:

Test Date: 2022/4/21 10:53:29

G Range: 0 - 90 Deg

G Interval: 1.0 Deg

Test System: Huipu CPM-1800B Goniophotometer

Humidity: 1

Test Distance: 6.15 m

Remarks:

Report No.:

Test Time: 2022/4/21 10:53:29

LUMINOUS DISTRIBUTION INTENSITY DATA

GammaC	C0	C45	C90	C135	C180	C225	C270	C315	C360	
G0	3681.76	3614.39	3572.71	3535.35	3681.76	3614.39	3572.71	3535.35	3681.76	
G1	3754.64	3456.86	3409.55	3371.57	3575.25	3734.03	3707.21	3664.47	3754.64	
G2	3789.1	3272.93	3219.41	3189.08	3437.8	3816.97	3802.79	3759.14	3789.1	
G3	3788.19	3063.02	3009.31	2981.74	3268.58	3862.96	3864.63	3815.91	3788.19	
G4	3754.45	2838.5	2783.32	2761.12	3071.79	3874.88	3890.57	3838.23	3754.45	
G5	3685.8	2602.91	2544.17	2525.98	2856.28	3851.92	3881.65	3827.6	3685.8	
G6	3581.91	2370.11	2301.95	2293.75	2632.94	3797.3	3841.86	3779.87	3581.91	
G7	3450.28	2134.89	2058.34	2059.1	2398.14	3713.3	3769.47	3699.68	3450.28	
G8	3290.86	1897.82	1820.66	1828.87	2167.87	3597.03	3668.63	3584.67	3290.86	
G9	3107.27	1672.66	1593.35	1612.18	1938.25	3451.91	3529.22	3436.33	3107.27	
G10	2907.57	1459.57	1377.5	1406.51	1718.24	3277.77	3360.95	3265.63	2907.57	
G11	2696.1	1253.97	1175.41	1208.05	1507.38	3078.75	3165.25	3074.67	2696.1	
G12	2478.02	1071.89	992.27	1031.34	1310.29	2859.31	2956.09	2872.28	2478.02	
G13	2255.47	903.43	827.44	868.4	1128.93	2628.85	2734.91	2661.53	2255.47	
G14	2027.51	755.39	683.53	726.65	960.77	2388.95	2500.98	2442.2	2027.51	
G15	1805.27	625.28	556.94	602.74	812.84	2150.4	2266.36	2220.29	1805.27	
G16	1588.7	509.66	449.9	494.91	675.17	1917.26	2025.89	2003.99	1588.7	
G17	1386.54	409.35	359.69	402.96	556.26	1700.16	1792.33	1792.98	1386.54	
G18	1193.98	320.24	281.51	323.38	451.49	1501.36	1567.48	1593.73	1193.98	
G19	1015.04	244.48	216.34	253.79	364.27	1320.04	1350.11	1407.49	1015.04	
G20	852.14	185.18	162.22	196.94	289.42	1159.26	1147.23	1239.71	852.14	
G21	703.8	143.5	123.3	152.42	224.51	1014.06	963.79	1088.87	703.8	
G22	571.69	105.87	93.16	115.25	176.9	869.8	800.25	939.62	571.69	
G23	451.68	78.44	71.07	86.46	134.19	727.1	656.94	791.36	451.68	
G24	354.21	57.49	53.06	64.6	102.2	599.26	529.97	651.87	354.21	
G25	272.13	42.25	40.7	47.28	77.35	489.99	419.87	526.91	272.13	
G26	209.76	31.66	31.05	36.01	58.1	396.76	327.09	422.25	209.76	
G27	162.33	26.17	26.66	26.51	44.1	315.97	250.91	335.67	162.33	
G28	123.57	17.59	21.97	21.71	34.08	246.68	192.55	264.76	123.57	
G29	93.31	13.39	16.04	14.75	26.4	190.47	146.83	208.29	93.31	
G30	71.45	11.01	13.54	11.5	22.69	146.79	112.14	162.94	71.45	
G31	53.1	8.93	11.46	8.93	16.53	112.03	85.37	127.54	53.1	
G32	40.73	6.66	9.15	6.62	13.5	86.27	66.42	97.77	40.73	
G33	29.84	4.65	7.6	3.74	11.38	66.68	49.09	74.43	29.84	
G34	24.4	3.63	5.98	2.38	8.93	51.85	37.44	56.89	24.4	
G35	17.25	2.57	4.84	1.29	6.51	41.04	27.72	43.16	17.25	
G36	13.05	1.17	3.63	0.45	4.99	31.09	23.0	33.93	13.05	

C Range: 0 - 360 Deg

C Interval: 45.0 Deg

Test Speed: High

Temperature: 6.15

Operators:

Test Date: 2022/4/21 10:53:29

G Range: 0 - 90 Deg

G Interval: 1.0 Deg

Test System: Huipu CPM-1800B Goniophotometer

Humidity: 1

Test Distance: 6.15 m

Remarks:

Report No.:

Test Time: 2022/4/21 10:53:29

LUMINOUS DISTRIBUTION INTENSITY DATA(Continue 1)

GammaC	C0	C45	C90	C135	C180	C225	C270	C315	C360	
G37	10.86	0.08	2.72	0.0	4.05	26.89	15.7	26.44	10.86	
G38	8.09	0.0	1.55	0.0	3.25	20.16	11.72	22.16	8.09	
G39	6.32	0.0	0.72	0.0	2.27	15.77	9.76	16.91	6.32	
G40	4.39	0.0	0.3	0.0	1.4	12.82	7.56	13.88	4.39	
G41	2.8	0.0	0.0	0.0	0.64	10.4	4.77	11.38	2.8	
G42	1.66	0.0	0.0	0.0	0.0	7.83	3.56	8.96	1.66	
G43	0.53	0.0	0.0	0.0	0.0	6.28	2.19	7.41	0.53	
G44	0.0	0.0	0.0	0.0	0.0	4.99	1.29	5.64	0.0	
G45	0.0	0.0	0.0	0.0	0.0	3.86	0.34	4.5	0.0	
G46	0.0	0.0	0.0	0.0	0.0	2.91	0.0	3.33	0.0	
G47	0.0	0.0	0.0	0.0	0.0	2.04	0.0	1.89	0.0	
G48	0.0	0.0	0.0	0.0	0.0	1.13	0.0	0.98	0.0	
G49	0.0	0.0	0.0	0.0	0.0	0.45	0.0	0.0	0.0	
G50	0.0	0.0	0.0	0.0	0.0	0.0	0.0	0.0	0.0	
G51	0.0	0.0	0.0	0.0	0.0	0.0	0.0	0.0	0.0	
G52	0.0	0.0	0.0	0.0	0.0	0.0	0.0	0.0	0.0	
G53	0.0	0.0	0.0	0.0	0.0	0.0	0.0	0.0	0.0	
G54	0.0	0.0	0.0	0.0	0.0	0.0	0.0	0.0	0.0	
G55	0.0	0.0	0.0	0.0	0.0	0.0	0.0	0.0	0.0	
G56	0.0	0.0	0.0	0.0	0.0	0.0	0.0	0.0	0.0	
G57	0.0	0.0	0.0	0.0	0.0	0.0	0.0	0.0	0.0	
G58	0.0	0.0	0.0	0.0	0.0	0.0	0.0	0.0	0.0	
G59	0.0	0.0	0.0	0.0	0.0	0.0	0.0	0.0	0.0	
G60	0.0	0.0	0.0	0.0	0.0	0.0	0.0	0.0	0.0	
G61	0.0	0.0	0.0	0.0	0.0	0.0	0.0	0.0	0.0	
G62	0.0	0.0	0.0	0.0	0.0	0.0	0.0	0.0	0.0	
G63	0.0	0.0	0.0	0.0	0.0	0.0	0.0	0.0	0.0	
G64	0.0	0.0	0.0	0.0	0.0	0.0	0.0	0.0	0.0	
G65	0.0	0.0	0.0	0.0	0.0	0.0	0.0	0.0	0.0	
G66	0.0	0.0	0.0	0.0	0.0	0.0	0.0	0.0	0.0	
G67	0.0	0.0	0.0	0.0	0.0	0.0	0.0	0.0	0.0	
G68	0.0	0.0	0.0	0.0	0.0	0.0	0.0	0.0	0.0	
G69	0.0	0.0	0.0	0.0	0.0	0.0	0.0	0.0	0.0	
G70	0.0	0.0	0.0	0.0	0.0	0.0	0.0	0.0	0.0	
G71	0.0	0.0	0.0	0.0	0.0	0.0	0.0	0.0	0.0	
G72	0.0	0.0	0.0	0.0	0.0	0.0	0.0	0.0	0.0	
G73	0.0	0.0	0.0	0.0	0.0	0.0	0.0	0.0	0.0	

C Range: 0 - 360 Deg

C Interval: 45.0 Deg

Test Speed: High

Temperature: 6.15

Operators:

Test Date: 2022/4/21 10:53:29

G Range: 0 - 90 Deg

G Interval: 1.0 Deg

Test System: Huipu CPM-1800B Goniophotometer

Humidity: 1

Test Distance: 6.15 m

Remarks:

Report No.:

Test Time: 2022/4/21 10:53:29

LUMINOUS DISTRIBUTION INTENSITY DATA(Continue 2)

Gamma\C	C0	C45	C90	C135	C180	C225	C270	C315	C360
G74	0.0	0.0	0.0	0.0	0.0	0.0	0.0	0.0	0.0
G75	0.0	0.0	0.0	0.0	0.0	0.0	0.0	0.0	0.0
G76	0.0	0.0	0.0	0.0	0.0	0.0	0.0	0.0	0.0
G77	0.0	0.0	0.0	0.0	0.0	0.0	0.0	0.0	0.0
G78	0.0	0.0	0.0	0.0	0.0	0.0	0.0	0.0	0.0
G79	0.0	0.0	0.0	0.0	0.0	0.0	0.0	0.0	0.0
G80	0.0	0.0	0.0	0.0	0.0	0.0	0.0	0.0	0.0
G81	0.0	0.0	0.0	0.0	0.0	0.0	0.0	0.0	0.0
G82	0.0	0.0	0.0	0.0	0.0	0.0	0.0	0.0	0.0
G83	0.0	0.0	0.0	0.0	0.0	0.0	0.0	0.0	0.0
G84	0.0	0.0	0.0	0.0	0.0	0.0	0.0	0.0	0.0
G85	0.0	0.0	0.0	0.0	0.0	0.0	0.0	0.0	0.0
G86	0.0	0.0	0.0	0.0	0.0	0.0	0.0	0.0	0.0
G87	0.0	0.0	0.0	0.0	0.0	0.0	0.0	0.0	0.0
G88	0.0	0.0	0.0	0.0	0.0	0.0	0.0	0.0	0.0
G89	0.0	0.0	0.0	0.0	0.0	0.0	0.0	0.0	0.0
G90	0.0	0.0	0.0	0.0	0.0	0.0	0.0	0.0	0.0