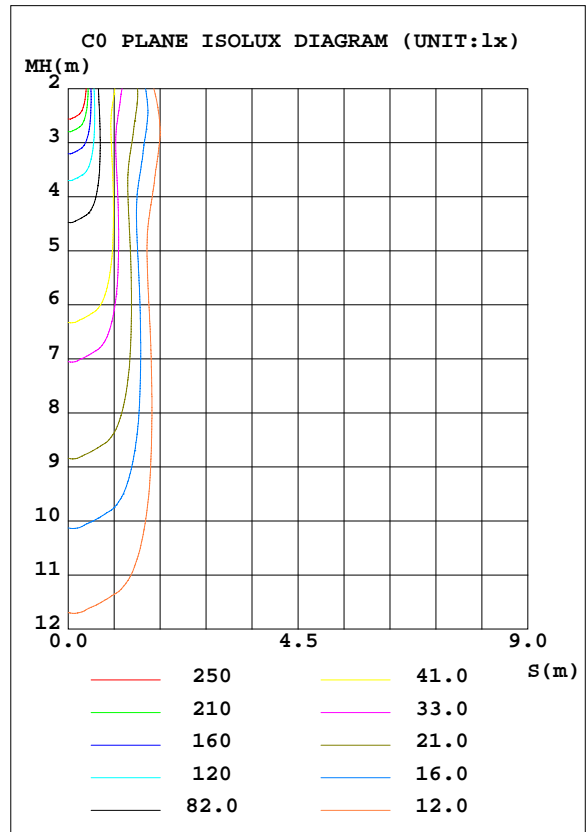
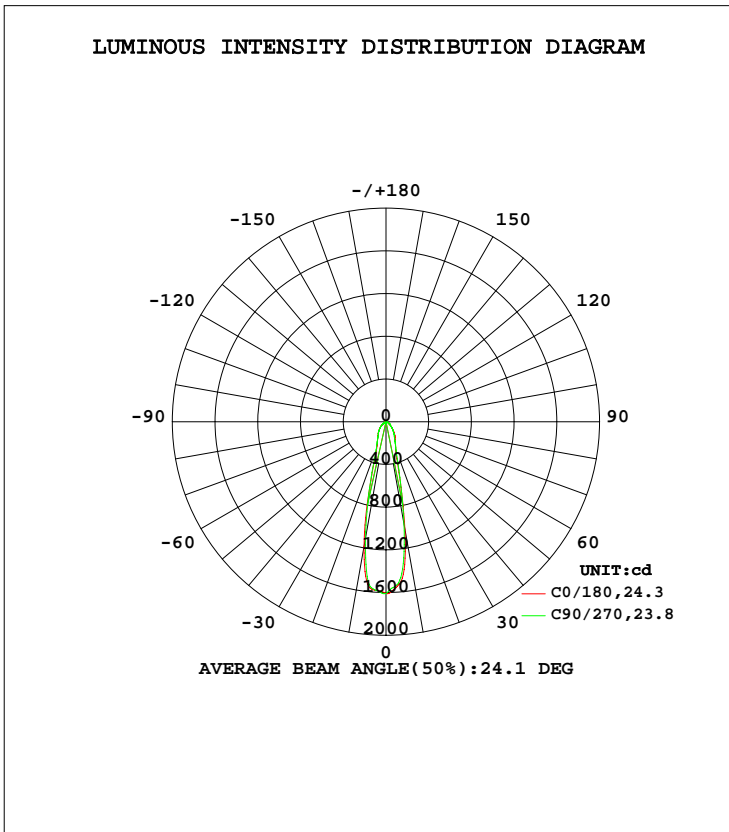


**LUMINAIRE PHOTOMETRIC TEST REPORT**

NAME: MR16-6W-4000K	TYPE:	WEIGHT:
SPEC.:	DIM.:	SERIAL No.:
MFR.: EVERFINE	SUR.:0.005	Shielding Angle:

DATA OF LAMP		PHOTOMETRIC DATA			
MODEL	1006	I <sub>max</sub> (cd)	1611	S/MH(C0/180)	0.40
NOMINAL POWER(W)	6	LOR(%)	100.0	S/MH(C90/270)	0.41
RATED VOLTAGE(V)	230	TOTAL FLUX(lm)	577.76	η UP, DN(C0-180)	0.0,49.5
NOMINAL FLUX(lm)	577.765	CIE CLASS	DIRECT	η UP, DN(C180-360)	0.0,50.5
LAMPS INSIDE	1	η up(%)	0.0	CIBSE SHR NOM	0.00
TEST VOLTAGE(V)	230	η down(%)	100.0	CIBSE SHR MAX	1.00



C Range: 0 - 360DEG  
 C Interval: 45.0DEG  
 Test Speed: MEDIUM  
 Temperature:25.3DEG  
 Operators:fu  
 Test Date:09 August 2022

γ Range: 0 - 90DEG  
 γ Interval: 0.5DEG  
 Test System:EVERFINE GO-i300\_V1 SYSTEM V2.0.406.11  
 Humidity:65.0%  
 Test Distance:3.161m [K=1.0000]  
 Remarks:

ZONAL FLUX DIAGRAM

ZONAL FLUX DIAGRAM:

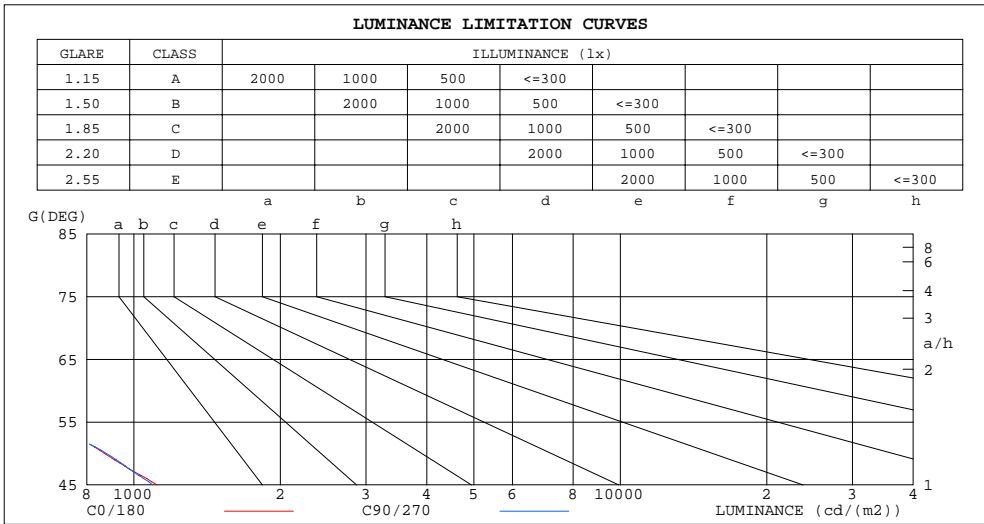
$\gamma$	C0	C45	C90	C135	C180	C225	C270	C315	$\gamma$	$\Phi$ zone	$\Phi$ total	$\Phi$ lum,lamp
10	1023	972.0	971.7	1052	1186	1217	1110	1034	0- 10	132.0	132.0	22.8,22.8
20	269.5	268.8	274.6	278.7	251.9	253.4	266.8	271.6	10- 20	145.6	277.5	48,48
30	171.4	167.0	156.2	158.6	151.3	147.7	146.8	157.5	20- 30	92.02	369.6	64,64
40	104.4	101.9	100.8	106.7	99.16	94.36	97.39	102.1	30- 40	80.23	449.8	77.9,77.9
50	54.73	53.18	56.85	61.65	58.20	54.02	54.51	56.92	40- 50	59.69	509.5	88.2,88.2
60	26.88	25.50	28.50	31.64	30.15	29.00	27.74	26.72	50- 60	36.25	545.7	94.5,94.5
70	14.82	14.55	14.16	16.76	16.63	16.80	14.32	13.82	60- 70	20.77	566.5	98.1,98.1
80	4.684	3.987	3.336	4.517	5.445	4.259	3.244	3.961	70- 80	9.515	576.0	99.7,99.7
90	0.2499	0.0029	0.0051	0.0022	0.5525	0.0051	0.0015	0.0030	80- 90	1.737	577.8	100,100
100									90-100			
110									100-110			
120									110-120			
130									120-130			
140									130-140			
150									140-150			
160									150-160			
170									160-170			
180									170-180			
DEG	LUMINOUS INTENSITY:cd									UNIT:lm		

C Range: 0 - 360DEG  
 C Interval: 45.0DEG  
 Test Speed: MEDIUM  
 Temperature:25.3DEG  
 Operators:fu  
 Test Date:09 August 2022

$\gamma$  Range: 0 - 90DEG  
 $\gamma$  Interval: 0.5DEG  
 Test System:EVERFINE GO-i300\_V1 SYSTEM V2.0.406.11  
 Humidity:65.0%  
 Test Distance:3.161m [K=1.0000]  
 Remarks:

**LUMINANCE LIMITATION CURVES**

NAME: MR16-6W-4000K	TYPE:	WEIGHT:
SPEC.:	DIM.:	SERIAL No.:
MFR.: EVERFINE	SUR.:0.005	Shielding Angle:



LUMINANCE cd/(m2)		
G(DEG)	C0/180	C90/270
85	231	89
80	276	191
75	315	284
70	443	411
65	477	473
60	549	565
55	690	690
50	870	877
45	1117	1094

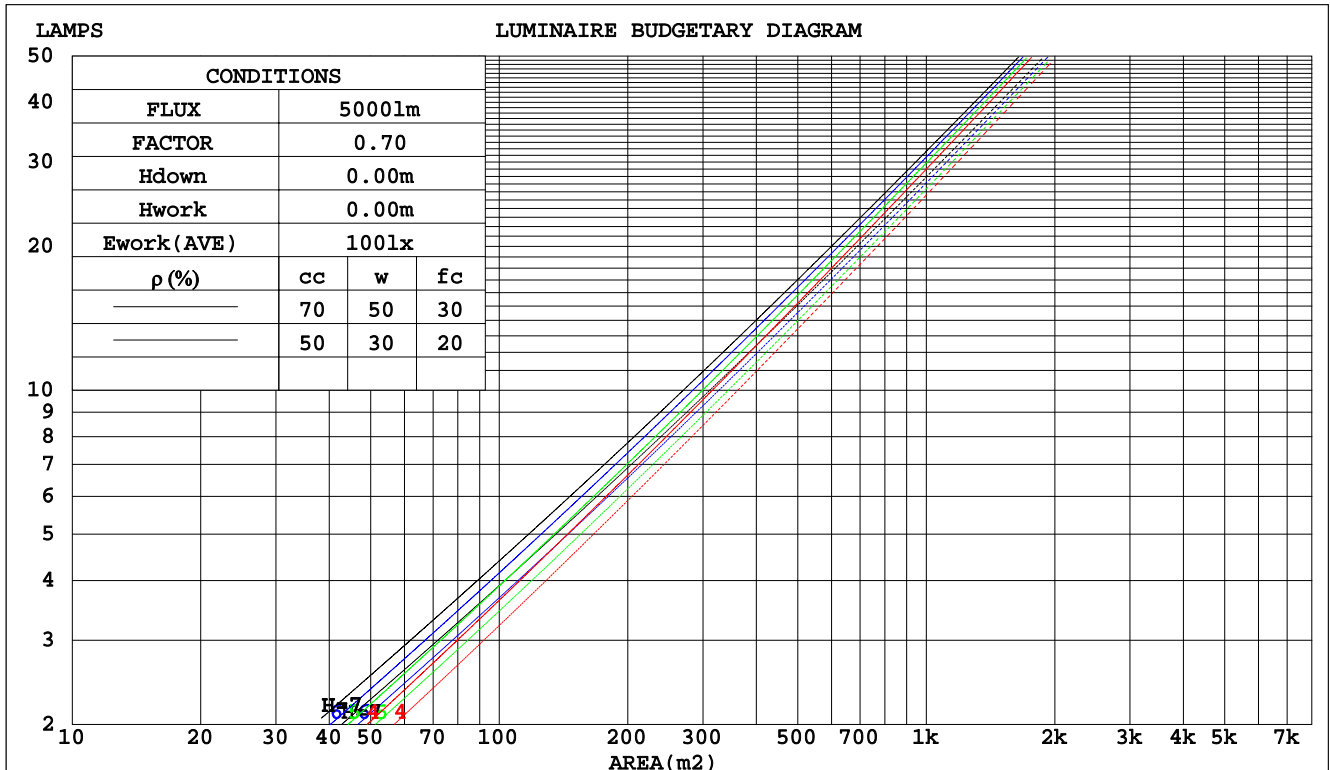
C Range: 0 - 360DEG  
 C Interval: 45.0DEG  
 Test Speed: MEDIUM  
 Temperature:25.3DEG  
 Operators:fu  
 Test Date:09 August 2022

$\gamma$  Range: 0 - 90DEG  
 $\gamma$  Interval: 0.5DEG  
 Test System:EVERFINE GO-i300\_V1 SYSTEM V2.0.406.11  
 Humidity:65.0%  
 Test Distance:3.161m [K=1.0000]  
 Remarks:

CU AND LUMINAIRE BUDGETARY ESTIMATE DIAGRAM

NAME: MR16-6W-4000K	TYPE:	WEIGHT:
SPEC.:	DIM.:	SERIAL No.:
MFR.: EVERFINE	SUR.:0.005	Shielding Angle:

pcc	80%			70%			50%			30%			10%			0
	50%	30%	10%	50%	30%	10%	50%	30%	10%	50%	30%	10%	50%	30%	10%	0
pw																0
pfc	20%			20%			20%			20%			20%			0
RCR	RCR:Room Cavity Ratio															
	Coefficients of Utilization(CU)															
0.0	1.19	1.19	1.19	1.16	1.16	1.16	1.11	1.11	1.11	1.06	1.06	1.06	1.02	1.02	1.02	1.00
1.0	1.10	1.07	1.05	1.08	1.05	1.03	1.04	1.02	.00	.00	.98	.97	.96	.95	.94	.92
2.0	1.01	.97	.93	.00	.96	.92	.96	.93	.90	.93	.91	.88	.91	.88	.86	.85
3.0	.94	.89	.85	.93	.88	.84	.90	.86	.82	.88	.84	.81	.85	.82	.80	.78
4.0	.88	.82	.78	.87	.81	.77	.85	.80	.76	.82	.78	.75	.81	.77	.74	.73
5.0	.82	.76	.72	.81	.76	.72	.80	.75	.71	.78	.74	.70	.76	.73	.70	.68
6.0	.78	.72	.67	.77	.71	.67	.75	.70	.66	.74	.69	.66	.73	.69	.66	.64
7.0	.74	.67	.63	.73	.67	.63	.72	.66	.63	.70	.66	.62	.69	.65	.62	.61
8.0	.70	.64	.60	.69	.64	.60	.68	.63	.59	.67	.63	.59	.66	.62	.59	.58
9.0	.67	.61	.57	.66	.61	.57	.65	.60	.57	.64	.60	.56	.63	.59	.56	.55
10.0	.64	.58	.54	.63	.58	.54	.63	.58	.54	.62	.57	.54	.61	.57	.54	.53



C Range: 0 - 360DEG  
 C Interval: 45.0DEG  
 Test Speed: MEDIUM  
 Temperature:25.3DEG  
 Operators:fu  
 Test Date:09 August 2022

γ Range: 0 - 90DEG  
 γ Interval: 0.5DEG  
 Test System:EVERFINE GO-i300\_V1 SYSTEM V2.0.406.11  
 Humidity:65.0%  
 Test Distance:3.161m [K=1.0000]  
 Remarks:

WEC AND CCEC

NAME: MR16-6W-4000K	TYPE:	WEIGHT:
SPEC.:	DIM.:	SERIAL No.:
MFR.: EVERFINE	SUR.:0.005	Shielding Angle:

ρcc	80%			70%			50%			30%			10%			0
ρw	50%	30%	10%	50%	30%	10%	50%	30%	10%	50%	30%	10%	50%	30%	10%	0
ρfc	20%			20%			20%			20%			20%			0
RCR	RCR:Room Cavity Ratio						Wall Exitance Coefficients(WEC)									
0.0																
1.0	.196	.111	.035	.189	.108	.034	.176	.101	.032	.165	.095	.030	.154	.089	.029	
2.0	.186	.102	.031	.181	.100	.031	.170	.095	.029	.160	.090	.028	.151	.085	.027	
3.0	.175	.093	.028	.170	.091	.027	.161	.087	.027	.153	.084	.026	.145	.080	.025	
4.0	.164	.085	.025	.160	.084	.025	.152	.081	.024	.145	.078	.023	.138	.075	.023	
5.0	.154	.079	.023	.151	.077	.023	.144	.075	.022	.137	.072	.022	.131	.070	.021	
6.0	.145	.073	.021	.142	.072	.021	.136	.070	.020	.130	.068	.020	.125	.066	.020	
7.0	.137	.068	.019	.134	.067	.019	.129	.065	.019	.124	.063	.018	.119	.062	.018	
8.0	.130	.063	.018	.127	.063	.018	.122	.061	.017	.118	.060	.017	.114	.058	.017	
9.0	.123	.059	.017	.121	.059	.016	.116	.057	.016	.112	.056	.016	.108	.055	.016	
10.0	.117	.056	.016	.115	.055	.015	.111	.054	.015	.107	.053	.015	.104	.052	.015	

ρcc	80%			70%			50%			30%			10%			0
ρw	50%	30%	10%	50%	30%	10%	50%	30%	10%	50%	30%	10%	50%	30%	10%	0
ρfc	20%			20%			20%			20%			20%			0
RCR	RCR:Room Cavity Ratio						Ceiling Cavity Exitance Coefficients(CCEC)									
0.0	.190	.190	.190	.163	.163	.163	.111	.111	.111	.064	.064	.064	.020	.020	.020	
1.0	.172	.157	.143	.148	.135	.123	.101	.093	.085	.058	.054	.050	.019	.017	.016	
2.0	.158	.132	.111	.135	.114	.096	.093	.079	.067	.054	.046	.039	.017	.015	.013	
3.0	.146	.114	.088	.125	.098	.076	.086	.068	.053	.050	.040	.031	.016	.013	.010	
4.0	.136	.099	.071	.117	.086	.062	.080	.060	.043	.046	.035	.026	.015	.011	.008	
5.0	.127	.088	.058	.109	.076	.051	.075	.053	.036	.044	.031	.021	.014	.010	.007	
6.0	.119	.078	.049	.102	.068	.043	.071	.047	.030	.041	.028	.018	.013	.009	.006	
7.0	.112	.071	.042	.096	.061	.036	.067	.043	.026	.039	.025	.015	.013	.008	.005	
8.0	.106	.064	.036	.091	.056	.031	.063	.039	.022	.037	.023	.013	.012	.008	.004	
9.0	.100	.059	.031	.086	.051	.027	.060	.036	.019	.035	.021	.012	.011	.007	.004	
10.0	.095	.054	.028	.082	.047	.024	.057	.033	.017	.033	.020	.010	.011	.006	.003	

C Range: 0 - 360DEG  
 C Interval: 45.0DEG  
 Test Speed: MEDIUM  
 Temperature:25.3DEG  
 Operators:fu  
 Test Date:09 August 2022

γ Range: 0 - 90DEG  
 γ Interval: 0.5DEG  
 Test System:EVERFINE GO-i300\_V1 SYSTEM V2.0.406.11  
 Humidity:65.0%  
 Test Distance:3.161m [K=1.0000]  
 Remarks:

UGR(Unified Glare Rating) Table

NAME: MR16-6W-4000K		TYPE:					WEIGHT:				
SPEC.:		DIM.:					SERIAL No.:				
MFR.: EVERFINE		SUR.:0.005					Shielding Angle:				
ceiling/cavity	0.7	0.7	0.5	0.5	0.3	0.7	0.7	0.5	0.5	0.3	
walls	0.5	0.3	0.5	0.3	0.3	0.5	0.3	0.5	0.3	0.3	
working plane	0.2	0.2	0.2	0.2	0.2	0.2	0.2	0.2	0.2	0.2	
Room dimensions	Viewed crosswise					Viewed endwise					
x = 2H y = 2H	11.0	12.0	11.2	12.1	12.3	10.9	11.9	11.1	12.1	12.2	
3H	11.6	12.6	11.9	12.8	13.0	11.5	12.4	11.8	12.6	12.8	
4H	11.8	12.7	12.1	12.9	13.2	11.7	12.6	12.0	12.8	13.0	
6H	11.9	12.8	12.2	13.0	13.2	11.7	12.5	12.0	12.8	13.0	
8H	12.0	12.7	12.3	13.0	13.3	11.7	12.5	12.0	12.8	13.0	
12H	12.0	12.7	12.3	13.0	13.3	11.7	12.4	12.0	12.7	13.0	
4H 2H	11.2	12.1	11.5	12.3	12.5	11.1	12.0	11.4	12.2	12.4	
3H	12.0	12.8	12.3	13.0	13.3	11.9	12.7	12.2	12.9	13.2	
4H	12.3	13.0	12.6	13.3	13.6	12.1	12.8	12.5	13.1	13.4	
6H	12.4	13.1	12.8	13.4	13.7	12.2	12.8	12.6	13.2	13.5	
8H	12.5	13.1	12.9	13.4	13.8	12.2	12.8	12.6	13.1	13.5	
12H	12.5	13.0	12.9	13.4	13.8	12.2	12.7	12.6	13.1	13.5	
8H 4H	12.3	12.9	12.7	13.2	13.6	12.2	12.7	12.6	13.1	13.5	
6H	12.5	13.0	13.0	13.4	13.8	12.3	12.8	12.7	13.2	13.6	
8H	12.6	13.0	13.1	13.5	13.9	12.3	12.7	12.8	13.2	13.6	
12H	12.7	13.0	13.1	13.5	13.9	12.3	12.7	12.8	13.1	13.6	
12H 4H	12.3	12.8	12.7	13.2	13.6	12.1	12.7	12.5	13.0	13.4	
6H	12.5	12.9	13.0	13.3	13.8	12.3	12.7	12.7	13.1	13.6	
8H	12.6	13.0	13.1	13.4	13.9	12.3	12.7	12.8	13.1	13.6	
Variations with the observer position at spacings:											
S = 1.0H	+ 0.7 / - 0.9					+ 0.7 / - 0.9					
1.5H	+ 0.7 / - 0.7					+ 0.6 / - 0.7					
2.0H	+ 1.7 / - 1.2					+ 1.7 / - 1.2					

CIE Pub.117, 577.8 lm Total Lamp Luminous Flux Correct (8log(F/F0) = -1.9)

C Range: 0 - 360DEG  
 C Interval: 45.0DEG  
 Test Speed: MEDIUM  
 Temperature:25.3DEG  
 Operators:fu  
 Test Date:09 August 2022

γ Range: 0 - 90DEG  
 γ Interval: 0.5DEG  
 Test System:EVERFINE GO-i300\_V1 SYSTEM V2.0.406.11  
 Humidity:65.0%  
 Test Distance:3.161m [K=1.0000]  
 Remarks:

UTILIZATION FACTORS TABLE

NAME: MR16-6W-4000K	TYPE:	WEIGHT:
SPEC.:	DIM.:	SERIAL No.:
MFR.: EVERFINE	SUR.:0.005	Shielding Angle:

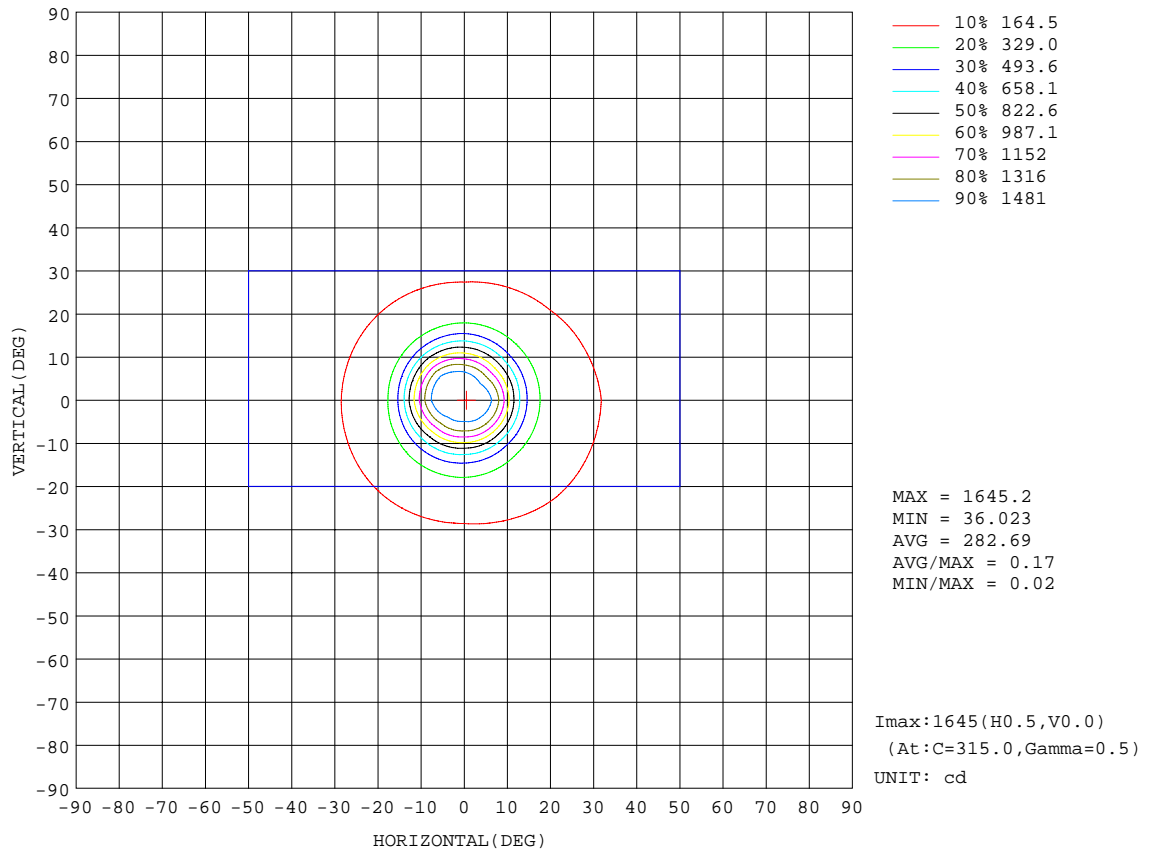
REFLECTANCE										
Ceiling	0.8	0.8	0.8	0.7	0.7	0.7	0.5	0.5	0.5	0
Walls	0.7	0.5	0.3	0.7	0.5	0.3	0.7	0.5	0.3	0
Working plane	0.2	0.2	0.2	0.2	0.2	0.2	0.2	0.2	0.2	0
ROOM INDEX	UTILIZATION FACTORS(PERCENT) $k(RI) \times RCR = 5$									
k = 0.60	78	70	65	77	69	65	76	69	65	60
0.80	86	79	74	85	78	74	84	78	73	68
1.00	92	85	80	91	84	80	89	85	79	74
1.25	97	91	86	96	90	86	94	89	85	80
1.50	101	94	90	99	94	90	97	92	89	83
2.00	105	99	95	103	98	94	100	96	93	87
2.50	107	102	98	105	101	97	102	98	96	89
3.00	109	105	101	107	103	100	104	101	98	91
4.00	112	108	105	110	106	104	106	103	101	94
5.00	113	110	108	111	108	106	107	105	103	95
ROOM INDEX	UF(total)									Direct
According to DIN EN 13032-2 2004			Suspended				SHRNOM = 1.25			

C Range: 0 - 360DEG  
 C Interval: 45.0DEG  
 Test Speed: MEDIUM  
 Temperature:25.3DEG  
 Operators:fu  
 Test Date:09 August 2022

$\gamma$  Range: 0 - 90DEG  
 $\gamma$  Interval: 0.5DEG  
 Test System:EVERFINE GO-i300\_V1 SYSTEM V2.0.406.11  
 Humidity:65.0%  
 Test Distance:3.161m [K=1.0000]  
 Remarks:

**ISOCANDELA DIAGRAM**

NAME: MR16-6W-4000K	TYPE:	WEIGHT:
SPEC.:	DIM.:	SERIAL No.:
MFR.: EVERFINE	SUR.:0.005	Shielding Angle:



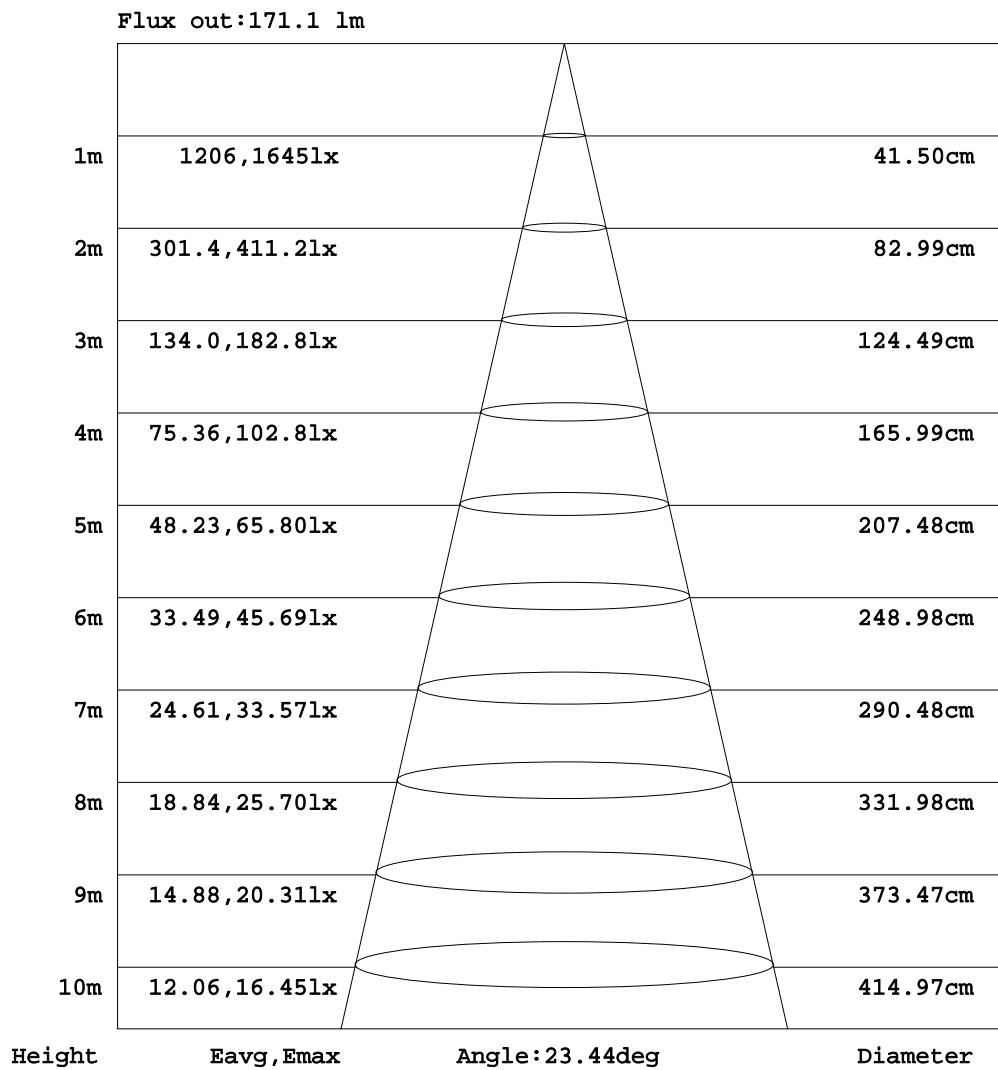
C Range: 0 - 360DEG  
 C Interval: 45.0DEG  
 Test Speed: MEDIUM  
 Temperature:25.3DEG  
 Operators:fu  
 Test Date:09 August 2022

γ Range: 0 - 90DEG  
 γ Interval: 0.5DEG  
 Test System:EVERFINE GO-i300\_V1 SYSTEM V2.0.406.11  
 Humidity:65.0%  
 Test Distance:3.161m [K=1.0000]  
 Remarks:



**AAI Figure**

NAME: MR16-6W-4000K	TYPE:	WEIGHT:
SPEC.:	DIM.:	SERIAL No.:
MFR.: EVERFINE	SUR.:0.005	Shielding Angle:



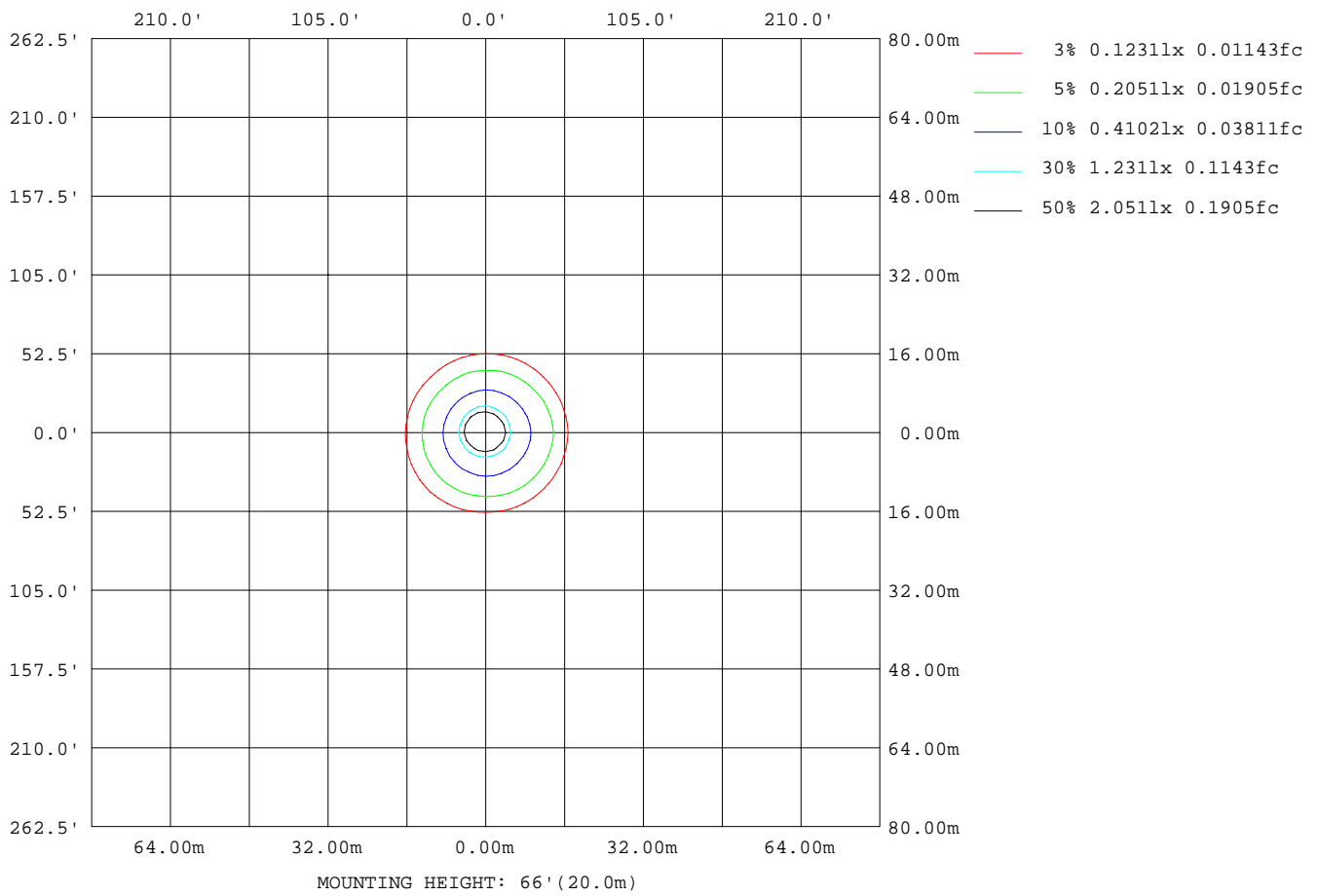
Note:The Curves indicate the illuminated area and the average illumination when the luminaire is at different distance.

C Range: 0 - 360DEG  
 C Interval: 45.0DEG  
 Test Speed: MEDIUM  
 Temperature:25.3DEG  
 Operators:fu  
 Test Date:09 August 2022

γ Range: 0 - 90DEG  
 γ Interval: 0.5DEG  
 Test System:EVERFINE GO-i300\_V1 SYSTEM V2.0.406.11  
 Humidity:65.0%  
 Test Distance:3.161m [K=1.0000]  
 Remarks:

**ISOLUX DIAGRAM**

NAME: MR16-6W-4000K	TYPE:	WEIGHT:
SPEC.:	DIM.:	SERIAL No.:
MFR.: EVERFINE	SUR.:0.005	Shielding Angle:



C Range: 0 - 360DEG  
 C Interval: 45.0DEG  
 Test Speed: MEDIUM  
 Temperature:25.3DEG  
 Operators:fu  
 Test Date:09 August 2022

γ Range: 0 - 90DEG  
 γ Interval: 0.5DEG  
 Test System:EVERFINE GO-i300\_V1 SYSTEM V2.0.406.11  
 Humidity:65.0%  
 Test Distance:3.161m [K=1.0000]  
 Remarks:

LED Avg.L Report

NAME: MR16-6W-4000K	TYPE:	WEIGHT:
SPEC.:	DIM.:	SERIAL No.:
MFR.: EVERFINE	SUR.:0.005	Shielding Angle:

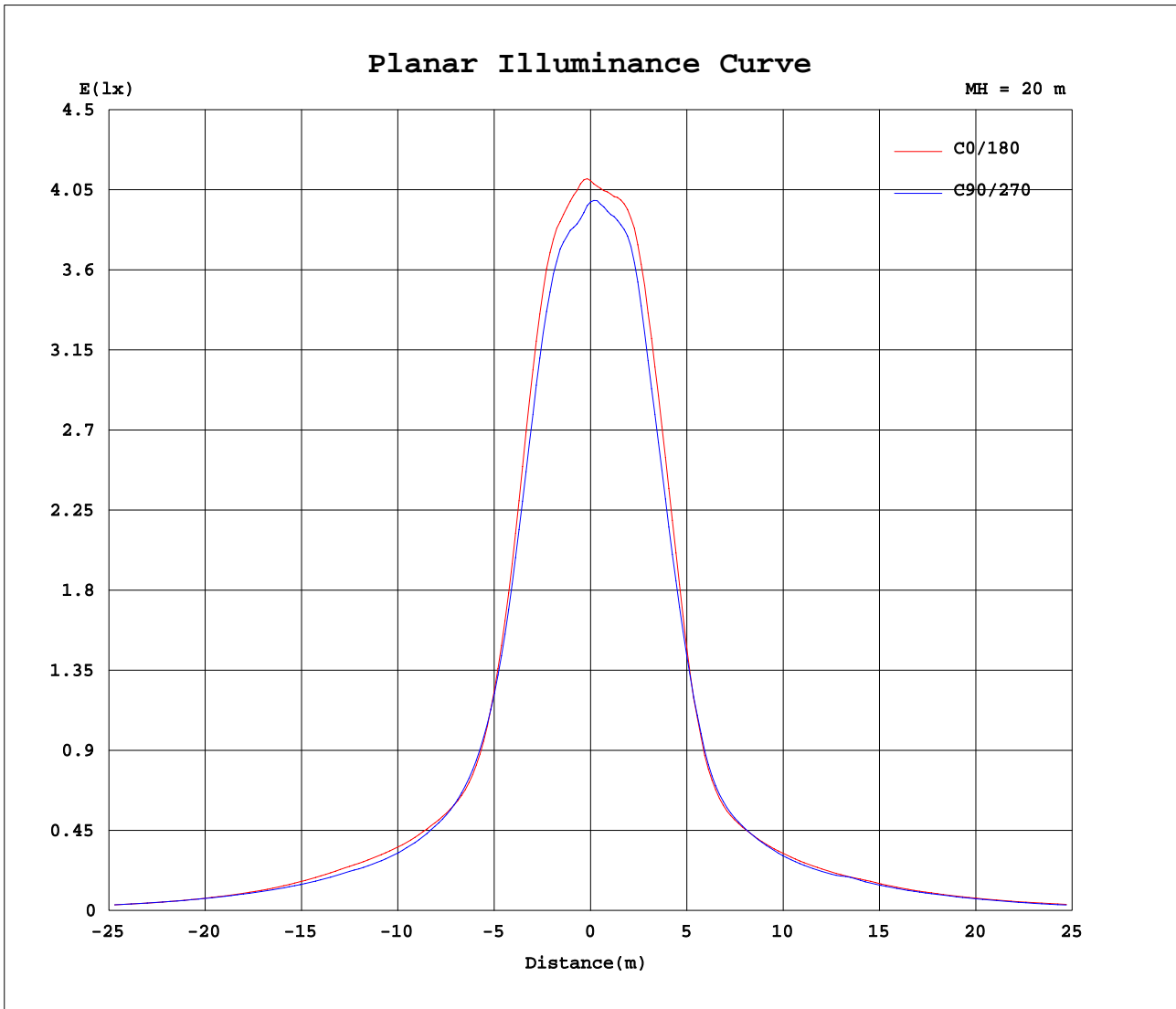
AvgL	cd/m2
L_0~180(65)av	493
L_0~180(75)av	342
L_0~180(85)av	278
L_90~270(65)av	474
L_90~270(75)av	291
L_90~270(85)av	91
L_45(65)av	493
L_45(75)av	332
L_45(85)av	128

Standard: GB/T 29293-2012

C Range: 0 - 360DEG  
 C Interval: 45.0DEG  
 Test Speed: MEDIUM  
 Temperature:25.3DEG  
 Operators:fu  
 Test Date:09 August 2022

γ Range: 0 - 90DEG  
 γ Interval: 0.5DEG  
 Test System:EVERFINE GO-i300\_V1 SYSTEM V2.0.406.11  
 Humidity:65.0%  
 Test Distance:3.161m [K=1.0000]  
 Remarks:

Planar Illuminance Curve



C Range: 0 - 360DEG  
 C Interval: 45.0DEG  
 Test Speed: MEDIUM  
 Temperature: 25.3DEG  
 Operators: fu  
 Test Date: 09 August 2022

γ Range: 0 - 90DEG  
 γ Interval: 0.5DEG  
 Test System: EVERFINE GO-i300\_V1 SYSTEM V2.0.406.11  
 Humidity: 65.0%  
 Test Distance: 3.161m [K=1.0000]  
 Remarks:

LUMINOUS DISTRIBUTION INTENSITY DATA

NAME: MR16-6W-4000K	TYPE:	WEIGHT:
SPEC.:	DIM.:	SERIAL No.:
MFR.: EVERFINE	SUR.:0.005	Shielding Angle:

Table--1

UNIT: cd

C( DEG) γ (DEG)	0	45	90	135	180	225	270	315										
0	1606	1606	1606	1606	1606	1606	1606	1606										
5	1518	1501	1489	1528	1573	1567	1561	1525										
10	1023	972	972	1052	1186	1217	1110	1034										
15	450	442	469	509	518	551	537	481										
20	269	269	275	279	252	253	267	272										
25	209	204	199	199	189	190	191	199										
30	171	167	156	159	151	148	147	157										
35	139	133	127	135	126	122	125	131										
40	104	102	101	107	99.2	94.4	97.4	102										
45	77.3	74.8	78.0	84.3	77.4	73.0	75.6	78.8										
50	54.7	53.2	56.9	61.6	58.2	54.0	54.5	56.9										
55	38.7	36.4	39.9	43.9	42.4	39.4	38.9	39.7										
60	26.9	25.5	28.5	31.6	30.2	29.0	27.7	26.7										
65	19.7	19.4	20.1	22.9	21.9	22.2	19.9	18.8										
70	14.8	14.6	14.2	16.8	16.6	16.8	14.3	13.8										
75	7.98	7.78	7.40	9.11	9.71	9.72	7.68	7.78										
80	4.68	3.99	3.34	4.52	5.45	4.26	3.24	3.96										
85	1.97	0.95	0.78	1.20	2.88	1.34	0.80	0.97										
90	0.25	0.00	0.01	0.00	0.55	0.01	0.00	0.00										

C Range: 0 - 360DEG  
 C Interval: 45.0DEG  
 Test Speed: MEDIUM  
 Temperature:25.3DEG  
 Operators:fu  
 Test Date:09 August 2022

γ Range: 0 - 90DEG  
 γ Interval: 0.5DEG  
 Test System:EVERFINE GO-i300\_V1 SYSTEM V2.0.406.11  
 Humidity:65.0%  
 Test Distance:3.161m [K=1.0000]  
 Remarks: